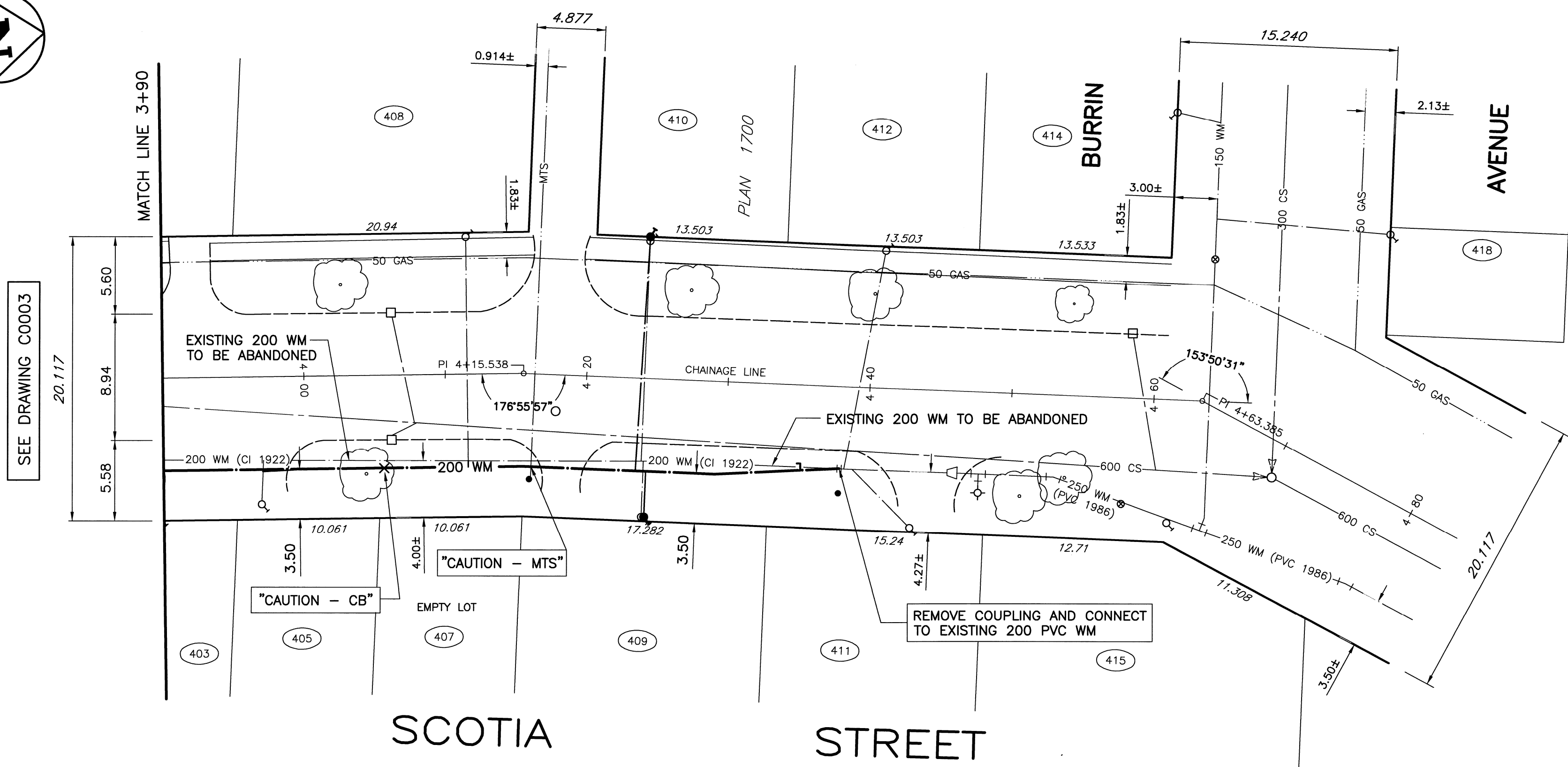
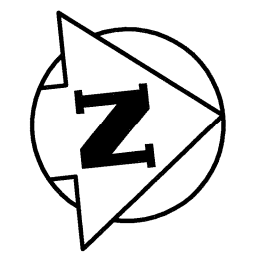


**CONSTRUCTION NOTES**

1. WATERMAIN TO HAVE 2.5m COVER FROM CENTRELINE OF ROAD
2. ALL CURB REPLACEMENT TO MATCH EXISTING CURB.
3. ALL EXISTING WATERMANS AT CONNECTION LOCATIONS ARE TO HAVE INVERTS VERIFIED PRIOR TO CONSTRUCTION.
4. INSTALL ALL HYDRANTS WITH FLANGE ELEVATION FROM 50mm TO 150mm ABOVE FINISHED GRADE.
5. SALVAGE ALL EXISTING HYDRANT ASSEMBLIES AND VALVES WHEN DIRECTED BY THE CONTRACT ADMINISTRATOR AND RETURN TO THE CITY YARD. ABANDON THE REMAINING VALVES (AND/OR VALVE BOXES) AND HYDRANT ASSEMBLIES.
6. INSTALL WATERMAIN BY TRENCHLESS METHODS UNDER ALL PAVEMENTS, TREES, LIGHT STANDARDS, AND OTHER APPURTENANCES.
7. RENEW ALL LEAD WATER CONNECTIONS UP TO THE PROPERTY LINE WITH 20mm COPPER WATER CONNECTIONS UNLESS RENEWAL SIZE IS OTHERWISE NOTED.
8. ALL VALVES SHALL TURN COUNTER CLOCKWISE TO OPEN WITH BLACK OPERATING NUT.
9. ALL BACKFILL UNDER PAVEMENT SHALL BE CLASS 3.
10. ALL BACKFILL UNDER BOULEVARD SHALL BE CLASS 5.
11. ABANDON SERVICES NO LONGER IN USE WHERE DIRECTED BY CONTRACT ADMINISTRATOR.
12. CONTRACTOR TO NOTIFY BUSINESSES AND RESIDENTS A MINIMUM OF 24 HOURS PRIOR TO ANY DISRUPTION TO WATER SERVICE.

HOUSE NO.	SIZE & TYPE	DISTANCE TO PL	STOP COCK LOCATION		CORPORATION COCK LOCATION	COMMENTS
			SHORT	LONG		
402 SCOTIA ST	16 COP	0.15	4.88m WEL OF HOUSE	12.65m WWL SCOTIA	?	
403 SCOTIA ST	16 LEAD	0.15	1.28m NSL OF HOUSE	14.17m NNL SEMPLE		RENEW WITH 20 mm COP
405 SCOTIA ST	13 COP	1.07	1.74m SSL OF HOUSE	21.34m NNL SEMPLE	0.15m N OF S/C	
408 SCOTIA ST	20 COP	0.30	3.14m SNL OF HOUSE	35.97m NNL SEMPLE	SAME AS S/C	
409 SCOTIA ST	16 LEAD	0.30	5.64m SNL OF HOUSE	36.58m SSL BURRIN	SAME AS S/C	RENEW WITH 20 mm COP
410 SCOTIA ST	20 LEAD	UNK	1.37m NSL OF HOUSE	36.73m SSL BURRIN	SAME AS S/C	RENEW WITH 20 mm COP
411 SCOTIA ST	20 COP	0.30	0.61m SNL OF HOUSE	17.65m SSL BURRIN	4.21m S OF S/C	
412 SCOTIA ST	20 COP	0.30	4.51m SNL OF HOUSE	20.09m SSL BURRIN	2.35m S OF S/C	
414 SCOTIA ST	20 COP	UNK	1.83m WEL OF HOUSE	10.27m WWL SCOTIA	0.61m E OF S/C	
415 SCOTIA ST	16 COP	1.37	3.90m NSL OF HOUSE	0.40m NSL BURRIN	0.27m S OF S/C	

\* SERVICE TO BE RENEWED. ALL OTHERS TO BE RECONNECTED



NOTE:  
CHAINAGE IS ALONG CONTROL LINE OF SCOTIA STREET

EXISTING	LEGEND-PLAN	PROPOSED	EXISTING	LEGEND-PLAN	PROPOSED	EXISTING	LEGEND-PLAN	PROPOSED
150 WM	WATERMAIN	---	TEE	+	+	TREE	+	+
400 FM	FEEDERMAIN	---	CURB STOP	+	+	LEGAL DIMENSION	15.240	+
300 LDS	LAND DRAINAGE SEWER	---	PLUG	+	+	SURVEY BAR	+	+
250 WWS	WASTEWATER SEWER	---	MANHOLE	+	+	TRAFFIC SIGNAL	+	+
300 CS	COMBINED SEWER	---	CATCHBASIN	+	+	GAS	+	+
200 FCM	FORCEMAIN	---	CURB INLET	+	+	HYDRO	+	+
+	REDUCER	+	ZINC ANODE	+	+	ASPHALT	+	+
+	HYDRANT	+	HYDRO POLE	+	+	CURB	+	+
+	VALVE	+	LIGHT STANDARD	+	+	ADDRESS	+	+
+	BEND	+	ANCHOR	+	+	SIGN	+	+

**LOCATION APPROVED UNDERGROUND STRUCTURES**

SUPV. U/G STRUCTURES DATE COMMITTEE

NOTE: LOCATION OF UNDERGROUND STRUCTURES AS SHOWN ARE BASED ON THE BEST INFORMATION AVAILABLE. BUT NO GUARANTEE IS GIVEN THAT ALL EXISTING UTILITIES ARE SHOWN OR THAT THE GIVEN LOCATIONS ARE EXACT. CONFIRMATION OF EXISTENCE AND EXACT LOCATION OF ALL SERVICES MUST BE OBTAINED FROM THE INDIVIDUAL UTILITIES BEFORE PROCEEDING WITH CONSTRUCTION.

NO.	REVISIONS	DATE	BY
A	ISSUED FOR TENDER	09.04.30	WTJ
00	ISSUED FOR APPROVAL	09.04.15	

**WARDROP** PEOPLE, PASSION, PERFORMANCE. TRUSTED GLOBALLY

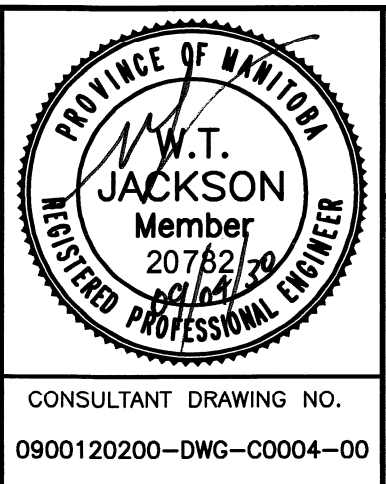
DESIGNED BY GWC CHECKED BY WTJ

DRAWN BY NL APPROVED BY GS

HOR. SCALE: 1 : 250  
VERTICAL: 1 : 50

RELEASED FOR CONSTRUCTION

DATE 09.04.15



**THE CITY OF WINNIPEG**  
WATER AND WASTE DEPARTMENT

2009 - WATERMAIN RENEWALS, CONTRACT 6

SCOTIA STREET  
14m NORTH OF SEMPLE AVENUE TO  
11m NORTH OF BURRIN AVENUE

CITY DRAWING NUMBER D-11787  
SHEET 4 OF 6

C0004

CONSULTANT DRAWING NO. 0900120200-DWG-C0004-00