

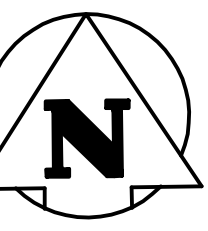
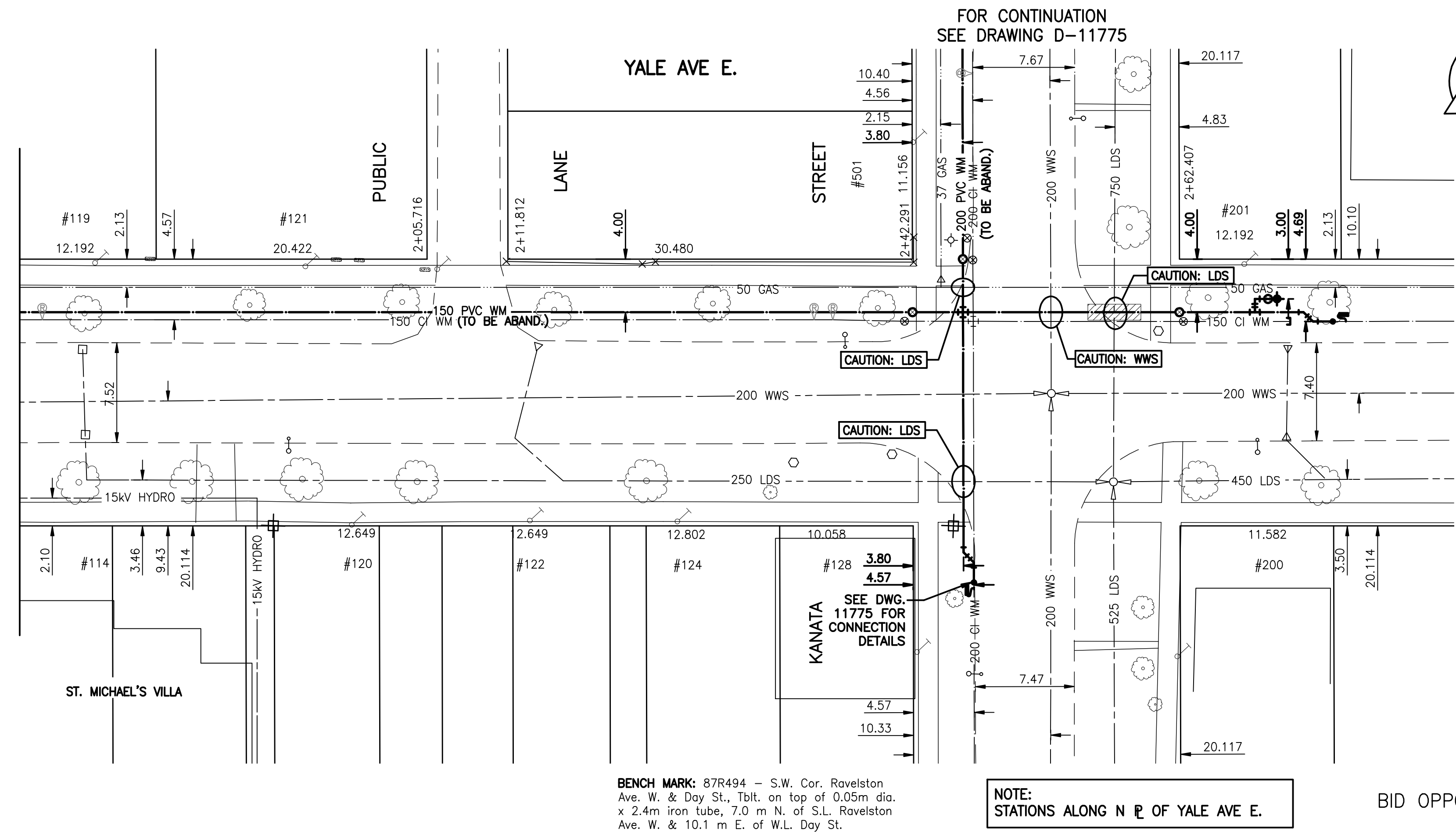
MATCH LINE 1+75

1+75 2+00 2+50

ADDRESS	SIZE (mm) & TYPE (STREET)	SHORT & LONG MEASUREMENT	CORP LOCATION	REMARKS
#119 YALE AVE. E. RESIDENTIAL	19 COPPER	0.3 W E H/L 6.4 OUT	-	SWR JCT 13.4E/WH IN CENTRE LINE STREET AT 111 & 115
#120 YALE AVE. E. RESIDENTIAL	19 COPPER	3.7 W W H/L	-	-
#121 YALE AVE. E. RESIDENTIAL	19 COPPER	1.5 E OF W H/L 5.9 FR HSE FRNT	0.3 W OF S/C	-
#121 YALE AVE. E. RESIDENTIAL	19 COPPER	0.9 W H/L 5.5 OUT	-	-
#122 YALE AVE. E. RESIDENTIAL	NO INFO	3.1 W. E. LINE 6.9 OUT	-	-
#124 YALE AVE. E. RESIDENTIAL	NO INFO	2.7 E. W. LINE 6.9 OUT	-	-
#128 YALE AVE. E. RESIDENTIAL	19 COPPER	9.1 S OF N BLDG LINE	0.6 N OF S/C	-
#200 YALE AVE. E. RESIDENTIAL	NO INFO	3.1 N. S. HSE. LINE	-	-
#201 YALE AVE. E. RESIDENTIAL	NO INFO	3.1 E. W. LINE 5.2 OUT	1.8 E OF W/L	-
#501 KANATA ST RESIDENTIAL	19 COPPER	1.1 S/L OF HOUSE 6.3 FROM HSE FRONT	-	-

**WARNING**  
 IF POWER EQUIPMENT OR EXPLOSIVES ARE TO BE USED FOR EXCAVATION ON THIS PROJECT THE CONTRACTOR MUST:  
 1) NOTIFY THE GAS COMPANY OF THE PROPOSED LOCATION OF EXCAVATION.  
 2) TAKE PRECAUTION TO AVOID DAMAGE TO GAS COMPANY INSTALLATIONS.  
 SEE PROVINCIAL REGULATION 140/92 FOR DETAILS

**METRIC**  
 WHOLE NUMBERS INDICATE MILLIMETRES  
 DECIMALIZED NUMBERS INDICATE METRES



- NOTES:**
- CONTRACTOR TO EXPOSE EXISTING WATERMANS AT THE IN'S AND CONFIRM INVERTS OF PIPE.
  - CONTRACTOR TO FOLLOW LATEST VERSION OF THE CITY OF WINNIPEG STANDARD CONSTRUCTION SPECIFICATION. WATERMANS TO BE INSTALLED BY TRENCHLESS METHODS.
  - CLASS 3 BACKFILL TO BE USED WITHIN 1 METER OF PAVED SURFACES.
  - CONTRACTOR TO NOTIFY RESIDENTS AT LEAST 24 HOURS PRIOR TO ANY DISRUPTION OF WATER SERVICE.
  - WATERMAIN INSULATION TO BE INSTALLED WHERE PIPE COVER IS LESS THAN 2.44m



EXISTING	LEGEND-PLAN	PROPOSED	EXISTING	LEGEND-PLAN	PROPOSED	EXISTING	LEGEND-PROFILE	PROPOSED
150 WM	WATERMAIN	150 WM	HYDRO	M.T.S.	150 WM	WATERMAIN	150 WM	HYDRANT, VALVE
300 LDS	LAND DRAINAGE SEWER	300 LDS	CONCRETE	ASPHALT	250 WWS	WASTE WATER SEWER	250 WWS	LAND DRAINAGE SEWER
250 WWS	WASTE WATER SEWER	250 WWS	PROPERTY LINE	SURVEY BAR	250 WWS	WASTE WATER SEWER	250 WWS	WASTE WATER SEWER
MANHOLE	MANHOLE	MANHOLE	PROPERTY LINE	SURVEY BAR	250 WWS	WASTE WATER SEWER	250 WWS	WASTE WATER SEWER
CATCH BASIN	CATCH BASIN	CATCH BASIN	PROPERTY LINE	SURVEY BAR	250 WWS	WASTE WATER SEWER	250 WWS	WASTE WATER SEWER
CURB INLET	CURB INLET	CURB INLET	PROPERTY LINE	SURVEY BAR	250 WWS	WASTE WATER SEWER	250 WWS	WASTE WATER SEWER
JUNCTIONS	JUNCTIONS	JUNCTIONS	PROPERTY LINE	SURVEY BAR	250 WWS	WASTE WATER SEWER	250 WWS	WASTE WATER SEWER
STREET REHABILITATION LIMIT	STREET REHABILITATION LIMIT	STREET REHABILITATION LIMIT	PROPERTY LINE	SURVEY BAR	250 WWS	WASTE WATER SEWER	250 WWS	WASTE WATER SEWER
GAS	GAS	GAS	PROPERTY LINE	SURVEY BAR	250 WWS	WASTE WATER SEWER	250 WWS	WASTE WATER SEWER

LOCATION APPROVED UNDERGROUND STRUCTURES	B.M.	ELEV.
30-043	233.130m	

NOTE:  
 LOCATION OF UNDERGROUND STRUCTURES AS SHOWN ARE BASED ON THE BEST INFORMATION AVAILABLE BUT NO GUARANTEE IS GIVEN THAT ALL EXISTING UTILITIES ARE SHOWN OR THAT THE GIVEN LOCATIONS ARE EXACT. CONFIRMATION OF EXISTENCE AND EXACT LOCATION OF ALL SERVICES MUST BE OBTAINED FROM THE INDIVIDUAL UTILITIES BEFORE PROCEEDING WITH CONSTRUCTION.

**Stantec Consulting Ltd.**  
 905 Waverley Street, Winnipeg, Manitoba  
 Tel 204-489-5900 Fax 204-453-9012

DESIGNED BY: J.K.H. CHECKED BY: H.A.K.  
 DRAWN BY: J.K.H. APPROVED BY: H.A.K.

HOR. SCALE: 1:250  
 VERTICAL: 1:50

RELEASED FOR CONSTRUCTION: [DATE]

CONSULTANT DRAWING NO. C-212

**THE CITY OF WINNIPEG**  
 WATER AND WASTE DEPARTMENT  
 ENGINEERING DIVISION

2009 WATERMAIN RENEWALS  
 - CONTRACT 5  
 YALE AVE EAST  
 75.00 EEL OF DAY STREET TO  
 KANATA STREET

SHEET 12 OF 14  
 CAD FILE DRAWING NUMBER I1210c-211-711.dwg  
 CITY DRAWING NUMBER D-11774

BID OPPORTUNITY 311-2009