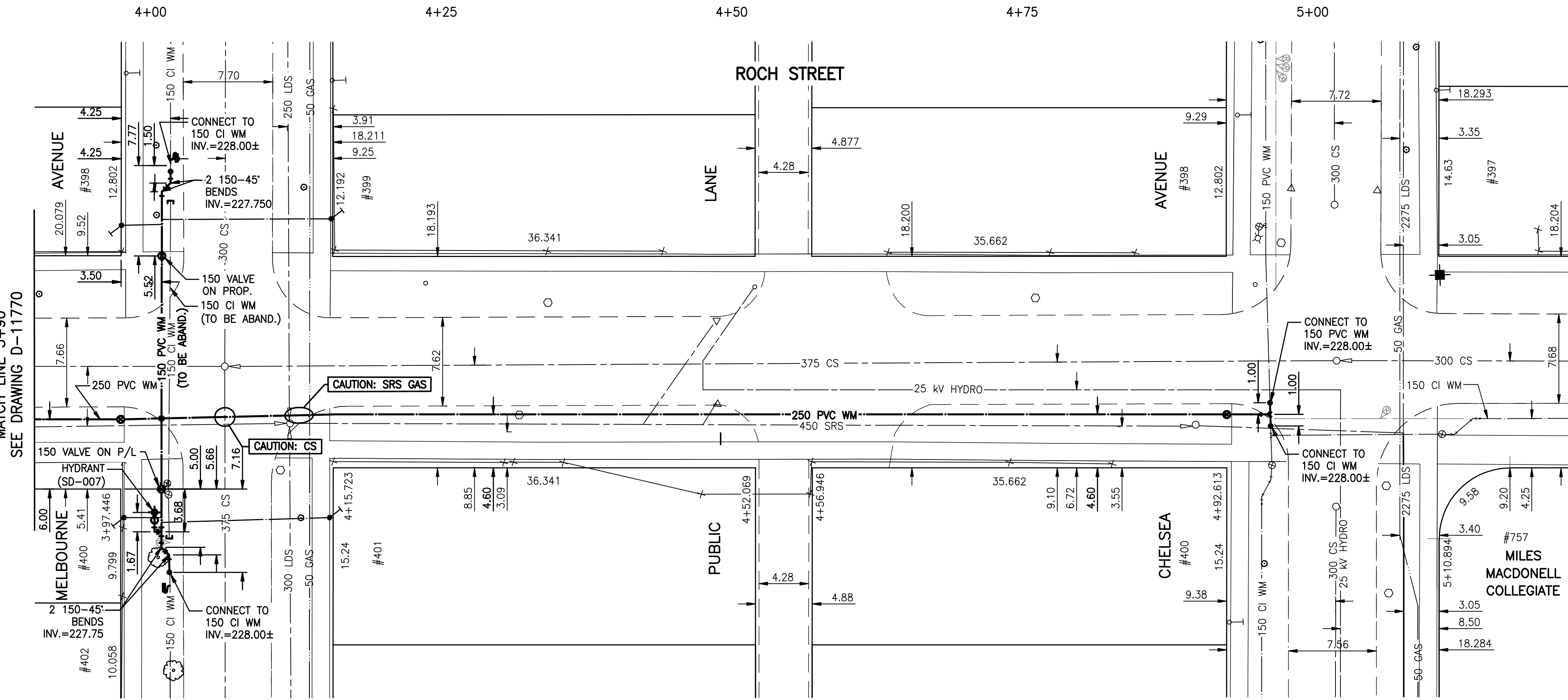


ADDRESS	SIZE (mm) & TYPE (STREET)	SHORT & LONG MEASUREMENT	CORP LOCATION	REMARKS
#398 MELBOURNE AVE. RESIDENTIAL	12 LEAD	0.6 W OF E/L	0.3 W OF S/C	-
#399 MELBOURNE AVE. RESIDENTIAL	12 LEAD	0.3 W OF E/L 7.2 OUT	0.3 W E/L OPP S/C	-
#400 MELBOURNE AVE. RESIDENTIAL	12 LEAD	1.5 E OF W/L	1.2 E HYDT	-
#401 MELBOURNE AVE. RESIDENTIAL	12 LEAD	4.6 E OF W LOT LINE	2.1 E HYDT	-
#397 CHELSEA AVE. RESIDENTIAL	12 COPPER	1.6 W W H/L	16.2 W OF HYDT	-
#398 CHELSEA AVE. RESIDENTIAL	12 COPPER	0.4 W OF W CORNER OF HSE	13.7 W OF HYDT	-
#400 CHELSEA AVE. RESIDENTIAL	19 COPPER	10.0 E W H/L	33.8 E OF HYDT	-
#757 ROCH ST. COMMERCIAL	50 COPPER	62.2 N/S BLDG	1.5 N.S.L BRONX	CORP TAPPED INTO HYD TEE

* RENEW LEAD SERVICES TO PROPERTY LINE WITH 19mm COPPER



- NOTES:
- CONTRACTOR TO EXPOSE EXISTING WATERMANS AT THE IN'S AND CONFIRM INVERTS OF PIPE.
 - CONTRACTOR TO FOLLOW LATEST VERSION OF THE CITY OF WINNIPEG STANDARD CONSTRUCTION SPECIFICATION. WATERMANS TO BE INSTALLED BY TRENCHLESS METHODS.
 - CLASS 3 BACKFILL TO BE USED WITHIN 1 METER OF PAVED SURFACES.
 - CONTRACTOR TO NOTIFY RESIDENTS AT LEAST 24 HOURS PRIOR TO ANY DISRUPTION OF WATER SERVICE.

WARNING

IF POWER EQUIPMENT OR EXPLOSIVES ARE TO BE USED FOR EXCAVATION ON THIS PROJECT THE CONTRACTOR MUST:

- NOTIFY THE GAS COMPANY OF THE PROPOSED LOCATION OF EXCAVATION.
- TAKE PRECAUTION TO AVOID DAMAGE TO GAS COMPANY INSTALLATIONS.

SEE PROVINCIAL REGULATION 140/92 FOR DETAILS

METRIC

WHOLE NUMBERS INDICATE MILLIMETRES
DECIMALIZED NUMBERS INDICATE METRES

BENCH MARK: 85R621 - N.E. Cor. Watt St. & Kimberley Ave., Tblt. on top of 0.05m dia. x 2.4m iron pipe, 0.3 m W. of E.L. of Watt St. & on N.L. of Kimberley Ave.

NOTE:
STATIONS ALONG S & Q OF RIGHT OF WAY

BID OPPORTUNITY 311-2009

APEGM
Certificate of Authorization
Stantec Consulting Ltd.
No. 1301 Expiry: April 30, 2009

WATERMAIN		HYDRO		WATERMAIN		LOCATION APPROVED UNDERGROUND STRUCTURES	
150 WM	HYDRANT	150 WM	M.T.S.	150 WM	HYDRANT, VALVE	150 WM	CONCRETE
300 LDS	VALVE	300 LDS	ASPHALT	300 LDS	LAND DRAINAGE SEWER	300 LDS	ASPHALT
250 WWS	LAND DRAINAGE SEWER	250 WWS	PROPERTY LINE	250 WWS	WASTE WATER SEWER	250 WWS	PROPERTY LINE
MANHOLE	WASTE WATER SEWER	MANHOLE	SURVEY BAR	MANHOLE	WASTE WATER SEWER	MANHOLE	SURVEY BAR
CATCH BASIN	WASTE WATER SEWER	CATCH BASIN	DITCH	CATCH BASIN	WASTE WATER SEWER	CATCH BASIN	DITCH
CURB INLET	WASTE WATER SEWER	CURB INLET	CURB STOP	CURB INLET	WASTE WATER SEWER	CURB INLET	CURB STOP
JUNCTIONS	WASTE WATER SEWER	JUNCTIONS	TREE	JUNCTIONS	WASTE WATER SEWER	JUNCTIONS	TREE
STREET REHABILITATION LIMIT	WASTE WATER SEWER	STREET REHABILITATION LIMIT	FENCE	STREET REHABILITATION LIMIT	WASTE WATER SEWER	STREET REHABILITATION LIMIT	FENCE
GAS	WASTE WATER SEWER	GAS	FENCE	GAS	WASTE WATER SEWER	GAS	FENCE
EXISTING	LEGEND-PLAN	PROPOSED	EXISTING	LEGEND-PLAN	PROPOSED	EXISTING	LEGEND-PROFILE
EXISTING	LEGEND-PLAN	PROPOSED	EXISTING	LEGEND-PROFILE	PROPOSED	EXISTING	LEGEND-PROFILE

NO.	REVISIONS	DATE	BY

Stantec Consulting Ltd.
905 Waverley Street, Winnipeg, Manitoba
Tel 204-489-5900 Fax 204-453-9012

DESIGNED BY: J.K.H. CHECKED BY: H.A.K.
DRAWN BY: J.K.H. APPROVED BY: H.A.K.

HOR. SCALE: 1:250
VERTICAL: 1:50

RELEASED FOR CONSTRUCTION: DATE

DATE: 09.02.04

ENGINEER'S SEAL

ORIGINAL SEALED BY: H.A. KATZ
P. ENG.
09.05.01

CONSULTANT DRAWING NO. C-209

THE CITY OF WINNIPEG
WATER AND WASTE DEPARTMENT
ENGINEERING DIVISION

2009 WATERMAIN RENEWALS
- CONTRACT 5
ROCH STREET

7.30 SSL OF MELBOURNE AVENUE TO
CHELSEA AVENUE

SHEET 9 OF 14
CAD FILE DRAWING NUMBER: I1210c-206-711.dwg
CITY DRAWING NUMBER: D-11771