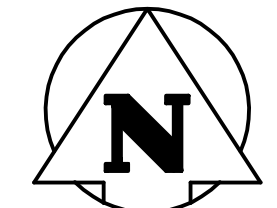


HAROLD AVENUE EAST

FOR CONTINUATION
SEE DRAWING D-11766



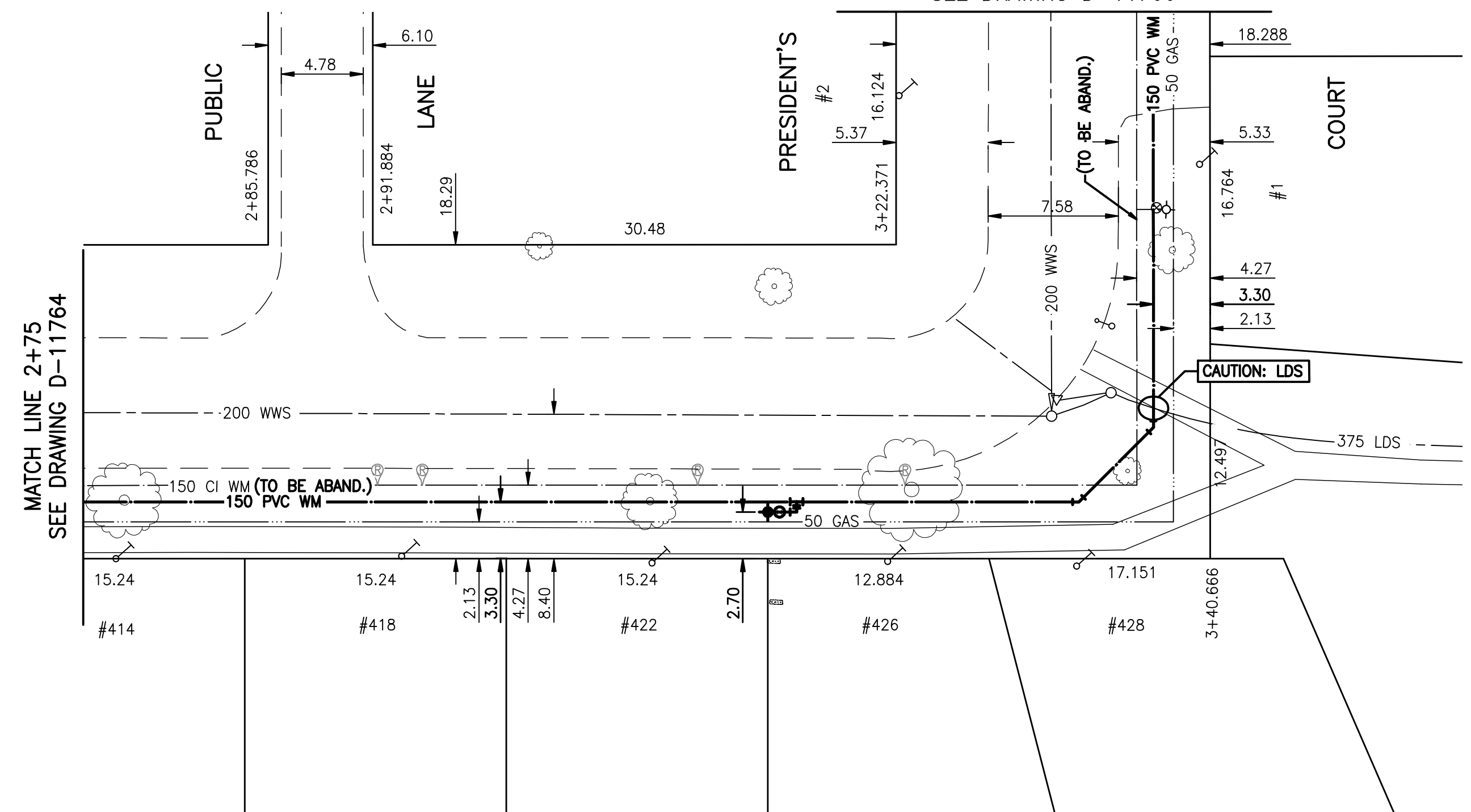
ADDRESS	SIZE (mm) & TYPE (STREET)	SHORT & LONG MEASUREMENT	CORP LOCATION	REMARKS
#414 HAROLD AVE. RESIDENTIAL	19 COPPER	4.7 EWL OF HOUSE 9.9 FROM HSE FRONT	-	SWR TEE OP WATER SHUT OFF
#414 HAROLD AVE. RESIDENTIAL	19 COPPER	4.3 WEL OF HOUSE 8.4 FROM HSE FRONT	-	-
#418 HAROLD AVE. RESIDENTIAL	19 COPPER	4.0 WEL OF HOUSE 8.2 FROM HSE FRONT	-	-
#418 HAROLD AVE. RESIDENTIAL	19 COPPER	4.7 WEL OF HOUSE 8.2 FROM HSE FRONT	-	SWR TEE OP WATER SHUT OFF
#422 HAROLD AVE. RESIDENTIAL	19 COPPER	5.5 WEL OF HOUSE 8.8 FROM HSE FRONT	-	SWR TEE OP WATER SHUT OFF
#426 HAROLD AVE. RESIDENTIAL	19 COPPER	5.5 WEL OF HOUSE 9.7 FROM HSE FRONT	-	SWR TEE OP WATER SHUT OFF
#428 HAROLD AVE. RESIDENTIAL	19 COPPER	3.8 EWL OF HOUSE 10.4 FROM HSE FRONT	-	SWR TEE OP WATER SHUT OFF
#428 HAROLD AVE. RESIDENTIAL	19 COPPER	3.8 EWL OF HOUSE 8.8 FROM HSE FRONT	-	SWR TEE OP WATER SHUT OFF

WARNING

IF POWER EQUIPMENT OR EXPLOSIVES ARE TO BE USED FOR EXCAVATION ON THIS PROJECT THE CONTRACTOR MUST:
 1) NOTIFY THE GAS COMPANY OF THE PROPOSED LOCATION OF EXCAVATION.
 2) TAKE PRECAUTION TO AVOID DAMAGE TO GAS COMPANY INSTALLATIONS.
 SEE PROVINCIAL REGULATION 140/92 FOR DETAILS

METRIC

WHOLE NUMBERS INDICATE MILLIMETRES
 DECIMALIZED NUMBERS INDICATE METRES



NOTES:

- CONTRACTOR TO EXPOSE EXISTING WATERMANS AT THE IN'S AND CONFIRM INVERTS OF PIPE.
- CONTRACTOR TO FOLLOW LATEST VERSION OF THE CITY OF WINNIPEG STANDARD CONSTRUCTION SPECIFICATION.
- WATERMANS TO BE INSTALLED BY TRENCHLESS METHODS.
- CLASS 3 BACKFILL TO BE USED WITHIN 1 METER OF PAVED SURFACES.
- CONTRACTOR TO NOTIFY RESIDENTS AT LEAST 24 HOURS PRIOR TO ANY DISRUPTION OF WATER SERVICE.

NOTE:
STATIONS ALONG S R OF HAROLD AVE. E.

BID OPPORTUNITY 311-2009

APEGM
 Certificate of Authorization
 Stantec Consulting Ltd.
 No. 1301 Expiry: April 30, 2009

WATERMAIN		HYDRO		WATERMAIN		WATERMAIN	
150 WM	HYDRANT	150 WM	M.T.S.	150 WM	HYDRANT, VALVE	150 WM	LAND DRAINAGE SEWER
300 LDS	VALVE	300 LDS	CONCRETE	300 LDS	LAND DRAINAGE SEWER	300 LDS	WASTE WATER SEWER
250 WWS	LAND DRAINAGE SEWER	250 WWS	ASPHALT	250 WWS	WASTE WATER SEWER	250 WWS	WASTE WATER SEWER
250 WWS	WASTE WATER SEWER	250 WWS	SIDEWALK	250 WWS	WASTE WATER SEWER	250 WWS	WASTE WATER SEWER
MANHOLE	MANHOLE	MANHOLE	PROPERTY LINE	MANHOLE	NORTH OR WEST GUTTER	MANHOLE	NORTH OR WEST GUTTER
CATCH BASIN	CATCH BASIN	CATCH BASIN	SURVEY BAR	CATCH BASIN	SOUTH OR EAST GUTTER	CATCH BASIN	SOUTH OR EAST GUTTER
CURB INLET	CURB INLET	CURB INLET	DITCH	CURB INLET	NORTH OR WEST R	CURB INLET	NORTH OR WEST R
JUNCTIONS	JUNCTIONS	JUNCTIONS	CURB STOP	JUNCTIONS	SOUTH OR EAST R	JUNCTIONS	SOUTH OR EAST R
STREET REHABILITATION LIMIT	STREET REHABILITATION LIMIT	STREET REHABILITATION LIMIT	TREE	STREET REHABILITATION LIMIT	NORTH OR WEST DITCH	STREET REHABILITATION LIMIT	NORTH OR WEST DITCH
GAS	GAS	GAS	FENCE	GAS	SOUTH OR EAST DITCH	GAS	SOUTH OR EAST DITCH
EXISTING	LEGEND-PLAN	PROPOSED	EXISTING	LEGEND-PLAN	PROPOSED	EXISTING	LEGEND-PROFILE
EXISTING	LEGEND-PLAN	PROPOSED	EXISTING	LEGEND-PLAN	PROPOSED	EXISTING	LEGEND-PROFILE

LOCATION APPROVED UNDERGROUND STRUCTURES
 SUPV. U/G STRUCTURES COMMITTEE DATE
 NOTE:
 LOCATION OF UNDERGROUND STRUCTURES AS SHOWN ARE BASED ON THE BEST INFORMATION AVAILABLE BUT NO GUARANTEE IS GIVEN THAT THE GIVEN LOCATIONS ARE EXACT. CONFIRMATION OF EXISTENCE AND EXACT LOCATION OF ALL SERVICES MUST BE OBTAINED FROM THE INDIVIDUAL UTILITIES BEFORE PROCEEDING WITH CONSTRUCTION.

NO.	REVISIONS	DATE	BY

Stantec Consulting Ltd.
 905 Waverley Street, Winnipeg, Manitoba
 Tel 204-489-5900 Fax 204-453-9012

DESIGNED BY	J.K.H.	CHECKED BY	H.A.K.
DRAWN BY	J.K.H.	APPROVED BY	H.A.K.
HOR. SCALE:	1:250	RELEASED FOR CONSTRUCTION:	
VERTICAL:	1:50	DATE	

ENGINEER'S SEAL
 ORIGINAL SEALED BY
 H.A. KATZ
 P. ENG.
 09.05.01
 CONSULTANT DRAWING NO.
 C-203

THE CITY OF WINNIPEG
 WATER AND WASTE DEPARTMENT
 ENGINEERING DIVISION

2009 WATERMAIN RENEWALS
 - CONTRACT 5
 HAROLD AVENUE EAST
 47.40 WEL OF PRESIDENT'S COURT TO
 PRESIDENT'S COURT

SHEET 3 OF 14
 CAD FILE DRAWING NUMBER
 I1210c-201-711.dwg
 CITY DRAWING NUMBER
 D-11765