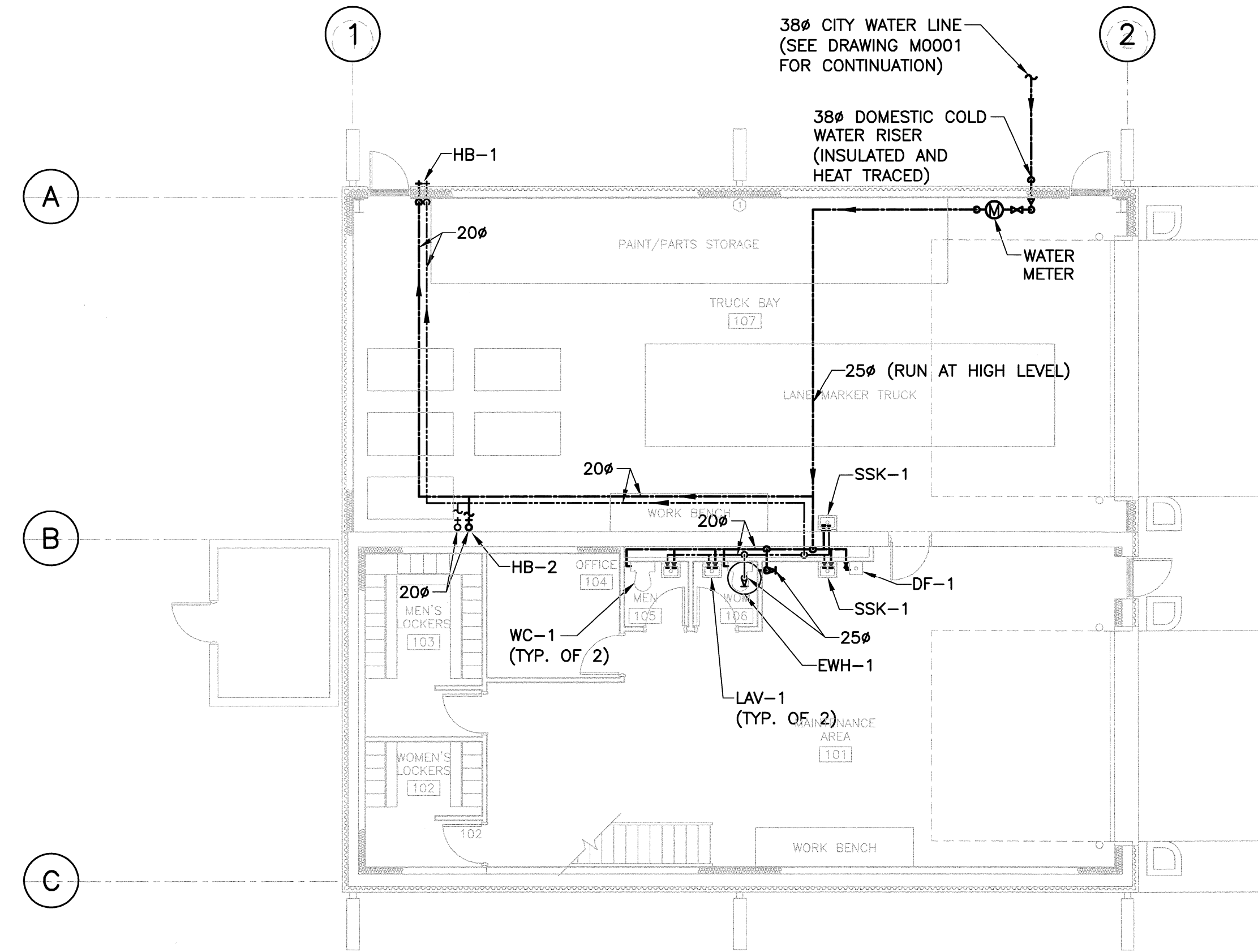
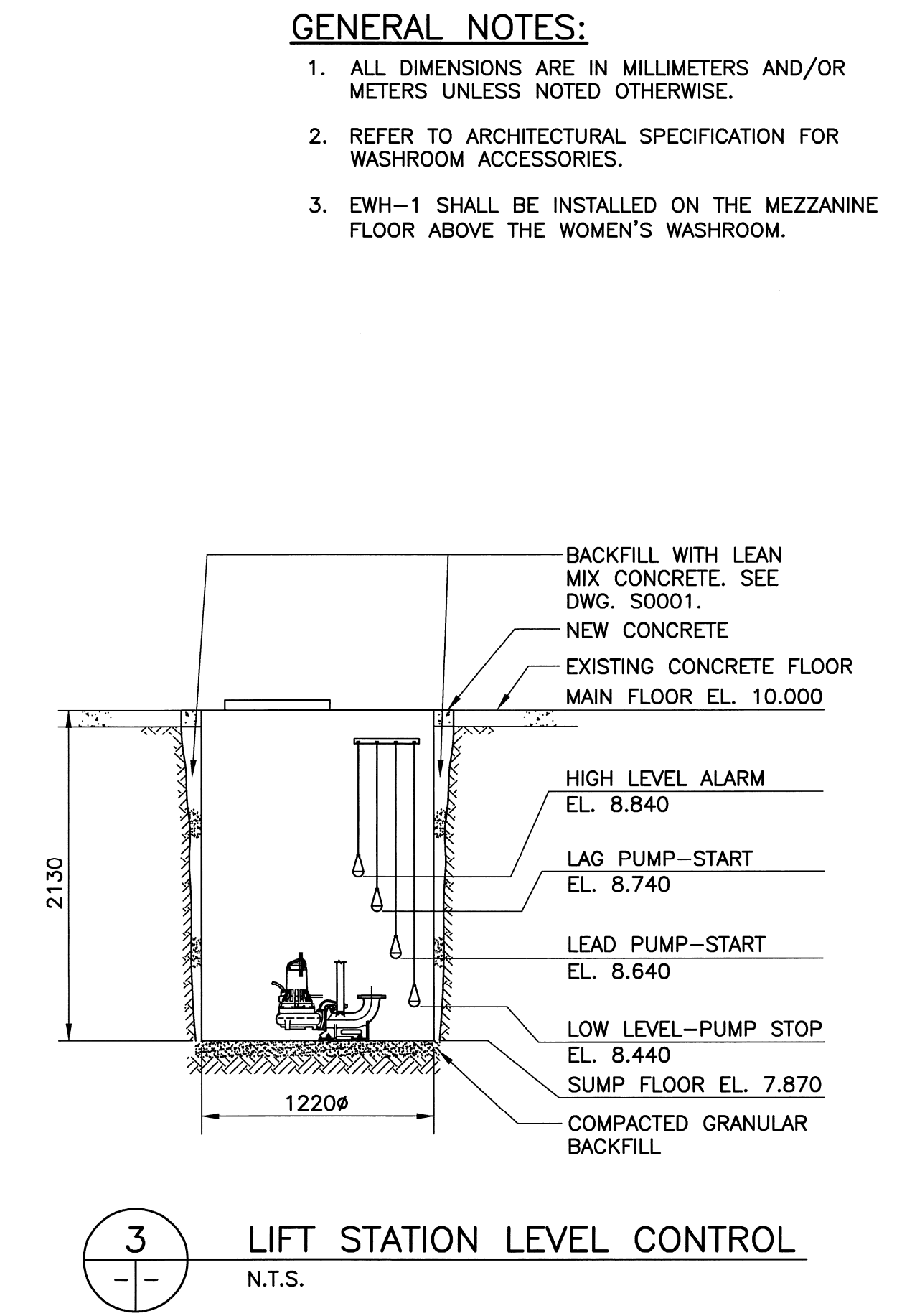


**1 FLOOR PLAN - SANITARY**  
1:100



**2 FLOOR PLAN - DOMESTIC WATER**  
1:100



**3 LIFT STATION LEVEL CONTROL**  
N.T.S.

- GENERAL NOTES:**
- ALL DIMENSIONS ARE IN MILLIMETERS AND/OR METERS UNLESS NOTED OTHERWISE.
  - REFER TO ARCHITECTURAL SPECIFICATION FOR WASHROOM ACCESSORIES.
  - EWH-1 SHALL BE INSTALLED ON THE MEZZANINE FLOOR ABOVE THE WOMEN'S WASHROOM.

**FAN SCHEDULE**

TAG NO.	LOCATION	SERVICE	MANUFACTURER	MODEL	AIR FLOW (L/s)	STATIC PRESSURE (Pa)	MOTOR (HP)	REMARKS
EF-1	MAINTENANCE AREA	EXHAUST	GREENHECK	SFB-09-4	190	80	1/4	UTILITY CENTRIFUGAL EXHAUST FAN, BELT DRIVE C/W UNIT SUPPORT AND HANGER SPRING ISOLATORS

**AIRCONDITIONER SCHEDULE**

TAG NO.	LOCATION	SERVICE	MANUFACTURER	MODEL	COOLING CAPACITY (kW)	HEATING CAPACITY (kW)	COOLING/HEATING ELECT'L. POWER (WATTS)	REMARKS
WAC-1	OFFICE	HEATING/COOLING	CARRIER	52FE108-1-E	2.34	1.23	940/1250	THRU-THE-WALL ROOM AIRCONDITIONER, HEATING AND COOLING TYPE C/W REMOTE CONTROLLER, ADJUSTABLE FAN SPEED AND EASY-OUT WASHABLE FILTER

**AIR HANDLING UNIT SCHEDULE**

TAG NO.	SERVICE	LOCATION	ELECTRIC HEATING (kW)	AIR FLOW		EXT. STATIC PRESSURE (Pa)	FAN MOTOR		MODEL	REMARKS
				MINIMUM OUTSIDE AIR L/s	SUPPLY L/s		kW	(HP)		
AHU-1	MAINTENANCE AREA	MAINTENANCE AREA	20	283	1885	125	1.49	2.0	ENGINEERED AIR LM4/K	C/W TAMCO OUTSIDE AIR AND RETURN AIR DAMPER, MERV 7 (30%) FILTERS AND SCR CONTROL ON ELECTRIC HEATER
AHU-2	TRUCK BAY	MAINTENANCE AREA	50	707	1885	125	1.49	2.0	ENGINEERED AIR LM4/K	C/W TAMCO OUTSIDE AIR AND RETURN AIR DAMPER, MERV 7 (30%) FILTERS AND SCR CONTROL ON ELECTRIC HEATER

**EQUIPMENT SCHEDULE-PLUMBING**

TAG NO.	SERVICE	LOCATION	CAPACITY	MODEL	REMARKS
LS-1	SEWAGE	MAINTENANCE AREA	2.8 L/s (42 GPM) @7.6m TDH AND 1.7 HP	ITT FLYGT DP-3068	PACKAGED LIFT STATION C/W DUPLEX CAST IRON NON-CLOG SUBMERSIBLE SEWAGE PUMPS, 1220x2130H PRE-FAB FRP TANK, CHECK AND BALL PLUG VALVES, FOUR FLOAT SWITCH LEVEL CONTROL, DUPLEX CONTROL PANEL AND CSA APPROVED
EWH-1	DOMESTIC HOT WATER	STORAGE AREA	480 LITERS STORAGE AND 24 kW ELECTRICAL INPUT	RHEEM-RUUD EG120-C-24	TANK-TYPE ELECTRIC HOT WATER HEATER C/W AGA/ASME RATED TEMPERATURE AND PRESSURE RELIEF VALVE, GLASS LINED STORAGE TANK, R-FOAM INSULATION, FACTORY INSTALLED ANODE RODS AND A WORKING PRESSURE OF 150 PSI
DF-1	POTABLE WATER	MAINTENANCE AREA	30.3 LPH OF WATER @10°C	HAWS HF08	FLOOR MOUNTED ELECTRIC WATER COOLER C/W LEVER HANDLE PRESSURE REGULATING BUBBLER, IN-LINE FILTER, SATIN-FINISH STAINLESS STEEL BASIN, GRANITE COLOR POWDER-COATED GALVANIZED EXTERIOR PANELS AND 134a REFRIGERATION SYSTEM



**FIXTURE SCHEDULE-PLUMBING**

FIXTURE	FIXTURE MODEL	FIXTURE DESCRIPTION	FAUCET MODEL	FAUCET DESCRIPTION	CONNECTION SIZES				REMARKS
					WASTE	VENT	C.W.	H.W.	
WC-1	CRANE ECOMISER 38370	WHITE VITREOUS CHINA BACK OUTLET TWO-PIECE TOILET, ELONGATED FRONT, C/W BOLT CAPS, TOILET SEAT/COVER, EASY-TOUCH LEVER DUAL FLUSH @ 6 & 4 LITERS PER FLUSH	-	-	100ø	50ø	12ø	-	SUPPLIED WITH ANGLE VALVE AND BRAIDED STAINLESS STEEL WATER CONNECTOR
LAV-1	CRANE HARWICH 1412V	WHITE VITREOUS CHINA WALL-HUNG LAVATORY, 508x457, 100mm CENTRES, FRONT OVERFLOW AND LEDGE BACK, C/W "WATTS" CONCEALED ARM LAVATORY CARRIER	DELTA 520-A-DST	CHROME SINGLE LEVER HANDLE LAVATORY FAUCET, 102mm CENTRESET C/W 12ø THREADED MALE INLET SHANKS AND POP-UP TYPE FITTING	38ø	38ø	12ø	12ø	SUPPLIED WITH P-TRAP, ANGLE VALVES AND BRAIDED STAINLESS STEEL WATER CONNECTORS
SSK-1	ZURN Z5430	WHITE VITREOUS CHINA PLAIN BACK SERVICE SINK, 483x559x330 DEEP C/W STAINLESS STEEL RIM GUARD AND STANDARD 75ø TRAP	DELTA 28T8063	ROUGH CHROME PLATED HEAVY DUTY WALLMOUNT SINK FAUCET, 200mm CENTRESET, C/W 12ø THREADED FEMALE INLET AND LEVER HANDLES	75ø	38ø	12ø	12ø	SUPPLIED WITH 75ø CAST IRON P-TRAP
HB-1	WATTS HY-700-2-10-VB	NON-FREEZE WALL HYDRANT FOR HOT AND COLD WATER, NICKEL BRONZE BOX AND DOOR, POLISHED BRONZE FACE, C/W 20ø HOSE CONNECTION, AND INTERNAL VACUUM BREAKER	-	-	-	-	20ø	20ø	SUPPLIED WITH HYDRANT KEY
HB-2	WATTS SC8-4	CAST BRASS HOSE BIBB FOR HOT AND COLD WATER C/W 20ø FEMALE NPT REGULAR PATTERN, TAMPER-PROOF VACUUM BREAKER AND CAST IRON HANDWHEEL	-	-	-	-	20ø	20ø	-

**ELECTRIC BASEBOARD HEATER SCHEDULE**

TAG NO.	LOCATION	MANUFACTURER	MODEL	ELECTRICAL CAPACITY (WATTS)	REMARKS
BB-1	MEN'S LOCKERS	CHROMALOX	AS8F410	1000	SLOPED TOP BASEBOARD HEATER, ALMOND COLOR, 208V/1PH, C/W BUILT-IN THERMOSTAT
BB-2	WOMEN'S LOCKERS	CHROMALOX	AS8F307	750	SLOPED TOP BASEBOARD HEATER, ALMOND COLOR, 208V/1PH, C/W BUILT-IN THERMOSTAT

**ELECTRIC UNIT HEATER SCHEDULE**

TAG NO.	LOCATION	MANUFACTURER	MODEL	ELECTRICAL CAPACITY (kW)	REMARKS
UH-1	MAINTENANCE AREA AND TRUCK BAY	CHROMALOX	EUL15B83CEUAT	15	HORIZONTAL INDUSTRIAL UNIT HEATER, ALMOND COLOR, 600V/3PH, C/W BUILT-IN THERMOSTAT AND HANGER BRACKET
UH-2	MAINTENANCE AREA AND TRUCK BAY	CHROMALOX	EUH10B84T	10	HORIZONTAL INDUSTRIAL UNIT HEATER, ALMOND COLOR, 600V/3PH, C/W BUILT-IN THERMOSTAT AND HANGER BRACKET

0	ISSUED FOR TENDER	09.04.17	L.S.
REVISIONS/ISSUE			
THE CONTENT OF THIS DOCUMENT IS NOT INTENDED FOR THE USE OF, NOR IS IT INTENDED TO BE RELIED UPON BY ANY PERSON, FIRM OR CORPORATION, OTHER THAN THE CLIENT AND WARDROP ENGINEERING INC. WARDROP ENGINEERING DENIES ANY LIABILITY WHATSOEVER TO OTHER PARTIES FOR DAMAGES OR INJURY SUFFERED BY SUCH THIRD PARTY ARISING FROM USE OF THIS DOCUMENT BY THEM, WITHOUT THE EXPRESS WRITTEN AUTHORITY OF WARDROP ENGINEERING AND OUR CLIENT. THIS DOCUMENT IS SUBJECT TO FURTHER RESTRICTIONS IMPOSED BY THE CONTRACT BETWEEN THE CLIENT AND WARDROP ENGINEERING INC. AND THESE PARTIES' PERMISSION MUST BE SOUGHT REGARDING THIS DOCUMENT IN ALL OTHER CIRCUMSTANCES.			
CLIENT <b>CITY OF WINNIPEG PUBLIC WORKS TRAFFIC SERVICES</b>			
<b>WARDROP</b>   Engineering Inc.			
PROJECT NAME RENOVATIONS FOR PAVEMENT MARKING OPERATIONS FACILITY			
DRAWING DESCRIPTION <b>PLUMBING FLOOR PLAN SANITARY DRAINAGE/DOMESTIC WATER AND EQUIPMENT SCHEDULE</b>			
DESIGNED BY: WGN	DRAWN BY: WGN	CHECKED BY: L.S.	
APPROVED BY:			
SCALE: AS NOTED	DATE: 09.02.09		
DRAWING NO. 0900070300-DWG-M0002	REV. 0		

