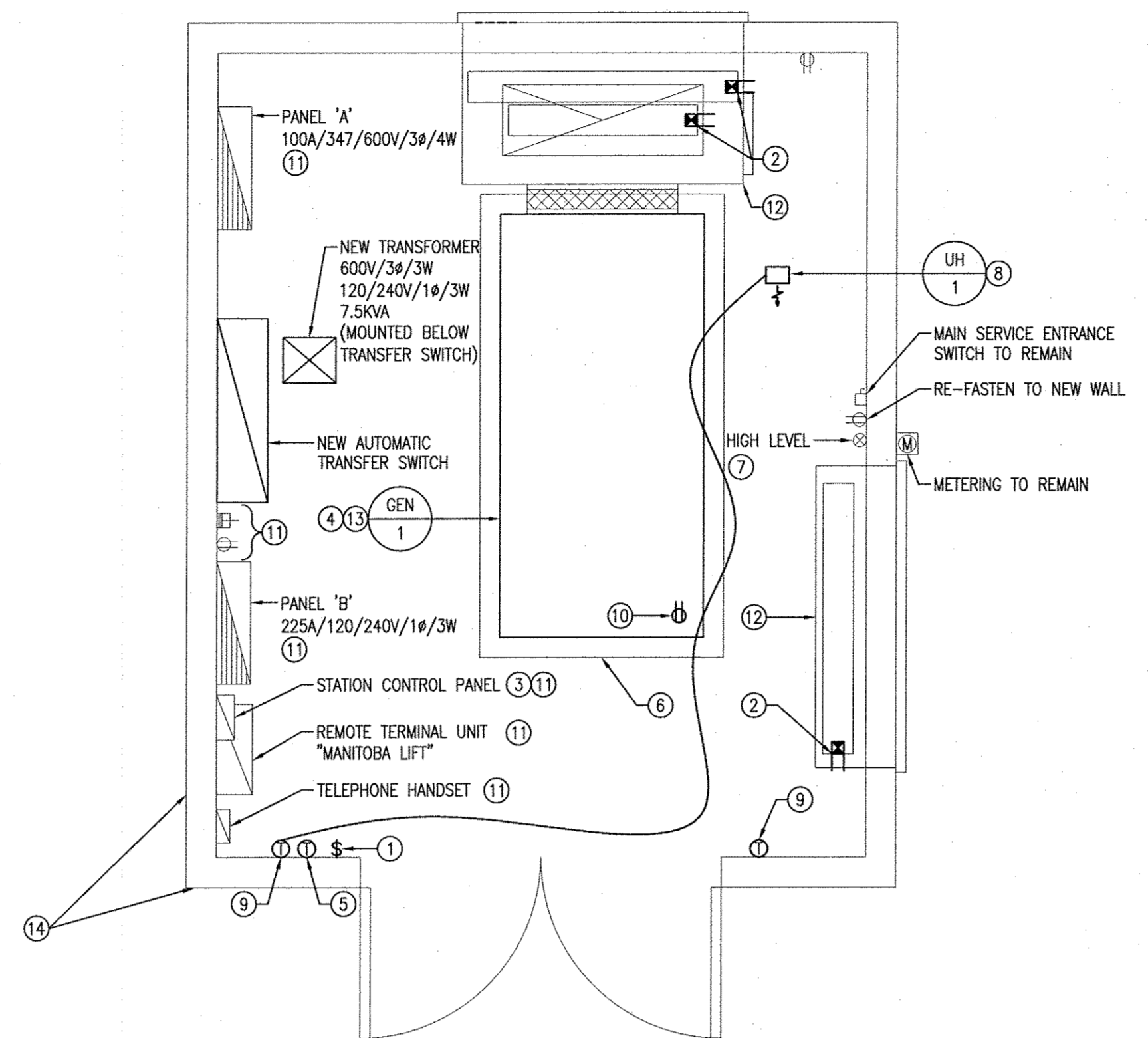


1 ELECTRICAL DEMOLITION
E-1 SCALE: 1/25 6 7

DEMOLITION NOTES ##

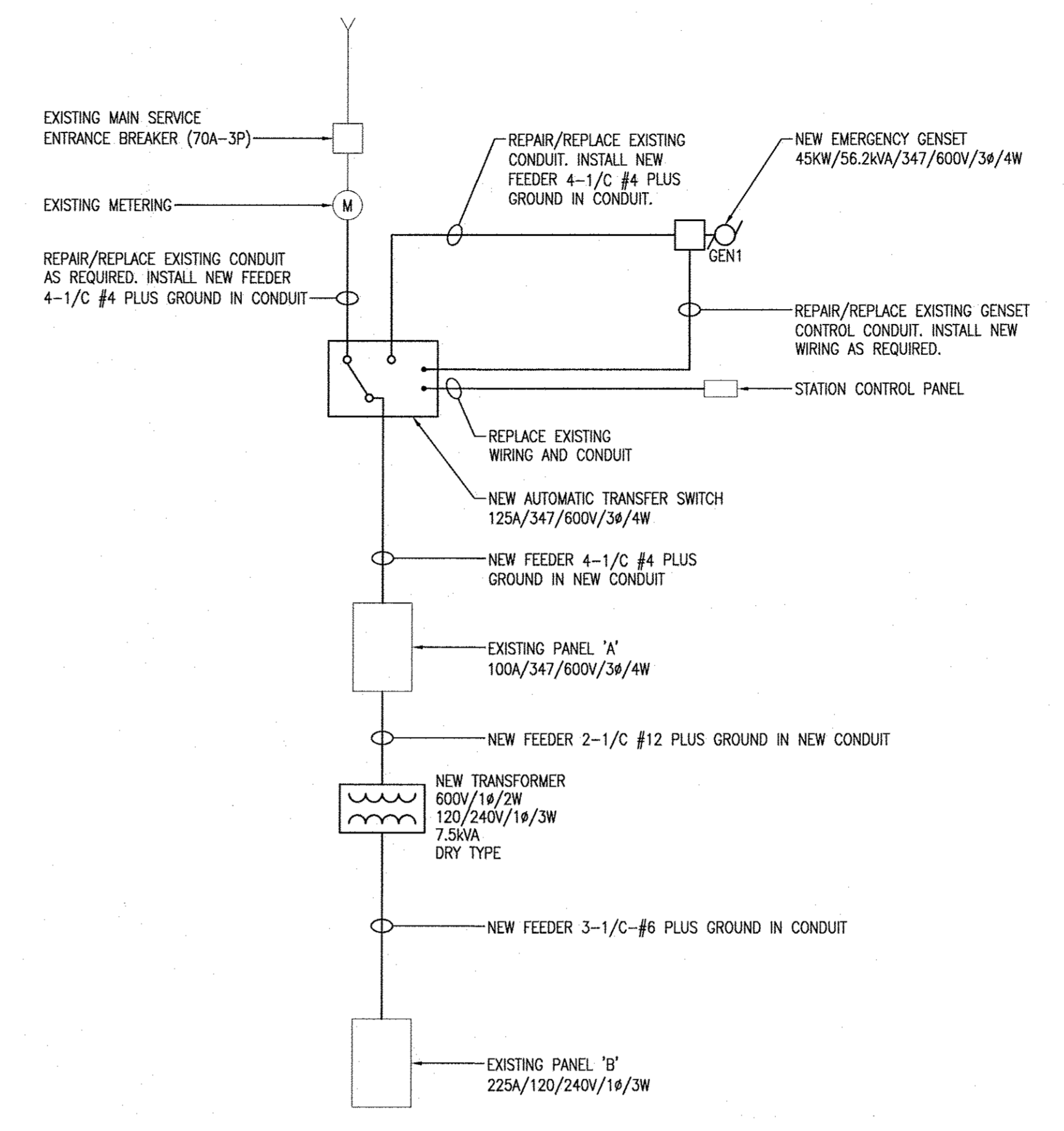
- RETAIN EXISTING EQUIPMENT. THOROUGHLY EXAMINE AND TEST RETAINED ELECTRICAL EQUIPMENT AND ALL ASSOCIATED WIRING. REPORT ANY ELECTRICAL CODE ISSUES AND DAMAGE TO THE CONTRACT ADMINISTRATOR.
- REMOVE EXISTING EQUIPMENT AND ALL UNUSED ASSOCIATED WIRING AND CONDUIT.
- EXISTING GENERATOR SET TO BE REMOVED BY CONTRACTOR. DIVISION 16 TO DISCONNECT GENERATOR SET AND REMOVE ALL ASSOCIATED POWER AND CONTROL WIRING.
- EXISTING DUCT DAMPER, MOTOR AND WIRING TO BE REMOVED BY DIVISION 15.
- EXISTING DUCTWORK TO BE REMOVED BY DIVISION 15.
- THOROUGHLY EXAMINE EXISTING WIRING AND CONDUIT. ALL EXISTING WIRING AND CONDUIT THAT IS BROKEN, KINKED, DAMAGED OR PULLED OUT FROM THE EQUIPMENT TO BE ENTIRELY REMOVED. ANY WIRING WITH STRIPPED OR DAMAGED INSULATION IS TO BE REMOVED FROM THE ENTIRE LENGTH OF THE CONDUIT RUN.
- EXISTING LIGHTING NOT SHOWN. RETAIN EXISTING LIGHT FIXTURES.
- DELETE CONDUIT AND WIRING TO NEAREST LIGHTING JUNCTION BOX ABOVE LIGHT SWITCH.
- DELETED BY DIVISION 15.
- DELETE EXISTING RECEPTACLE AT GENERATOR SET.
- EXISTING WALLS TO BE DEMOLISHED BY CONTRACTOR. EXISTING ELECTRICAL EQUIPMENT THAT IS CURRENTLY OPERATIONAL AND IN USE SHALL REMAIN OPERATIONAL AND IN USE DURING CONSTRUCTION. PROVIDE TEMPORARY SUPPORT UNTIL NEW WALLS ARE BUILT AND EXTEND EXISTING WIRING AND CONDUIT AS REQUIRED. COORDINATE WORK WITH THE CONTRACTOR AND THE CITY.



2 ELECTRICAL NEW CONSTRUCTION
E-1 SCALE: 1/25

DRAWING NOTES ##

- PROVIDE NEW AT THE LOCATION OF EXISTING AND WIRE AS REQUIRED. PROVIDE NEW CONDUIT AND WIRING TO NEAREST LIGHTING JUNCTION BOX ABOVE LIGHT SWITCH TO CONTROL LIGHTING.
- NEW MOTORIZED DUCT DAMPER BY DIVISION 15. DIVISION 15 TO WIRE AS REQUIRED. DIVISION 15 TO CONNECT TO EXISTING 120V CIRCUIT.
- REPAIR/REPLACE EXISTING CONDUIT TO FLOOR. CHOP EXISTING FLOOR IF REQUIRED TO GAIN ACCESS TO DAMAGED CONDUIT FOR REPLACEMENT. REMOVE EXISTING WIRING FROM ENTIRE LENGTH OF THIS CONDUIT AND REPLACE WITH NEW. REPLACE THE ENTIRE LENGTH OF EXISTING CONDUIT EXTENDING FROM THE TOP OF THIS EQUIPMENT. INSTALL NEW WIRING TO MATCH EXISTING.
- NEW GENERATOR SET BY DIVISION 16.
- NEW THERMOSTAT PROVIDED BY DIVISION 15. WIRING BY DIVISION 15.
- NEW CONCRETE HOUSEKEEPING PAD BY CONTRACTOR. EXTEND EXISTING PAD AS REQUIRED.
- PROVIDE NEW COVER PLATE.
- NEW ELECTRIC UNIT HEATER BY DIVISION 16. TO MATCH EXISTING. RE-CONNECT TO EXISTING WIRING.
- NEW THERMOSTAT TO UNIT HEATER BY DIVISION 16. RE-CONNECT EXISTING INTERLOCK TO AUTOMATIC TRANSFER SWITCH TO PREVENT HEATER OPERATION DURING EMERGENCY CONDITION.
- NEW RECEPTACLE IN NEW CAST BOX FOR BLOCK HEATER AND BATTERY CHARGER. COORDINATE EXACT LOCATION WITH GENSET SUPPLIER. REPAIR/REPLACE EXISTING CONDUIT FROM PANEL 'B' TO GENSET PAD. INSTALL NEW WIRING IN CONDUIT TO MATCH EXISTING. EXTEND WIRING FROM END OF CONDUIT STUB TO RECEPTACLE IN LIQUID-TITE FLEX.
- RETAINED EQUIPMENT. INSTALL ON NEW WALL AT ORIGINAL LOCATION. SEE SINGLE LINE DIAGRAM FOR NEW WIRING.
- NEW DUCTWORK BY DIVISION 15.
- CONNECT THE FOLLOWING GENERATOR ALARMS TO THE STATION CONTROL PANEL:
-GENERATOR FAIL
-GENERATOR RUNNING
- NEW WALL BY CONTRACTOR. COORDINATE INSTALLATION OF RETAINED AND NEW ELECTRICAL EQUIPMENT WITH THE CONTRACTOR AND THE CITY.



3 SINGLE LINE DIAGRAM
E-1 SCALE: N.T.S.

SYMBOL LEGEND	
	DUCT DAMPER
	DUPLEX RECEPTACLE
	208V 30A RECEPTACLE
	JUNCTION BOX
	MOTOR AND DISCONNECT
	DISCONNECT
	THERMOSTAT
	SURFACE MOUNTED PANEL
	SWITCH
	ELECTRIC UNIT HEATER
	UTILITY METER

* PLEASE NOTE *

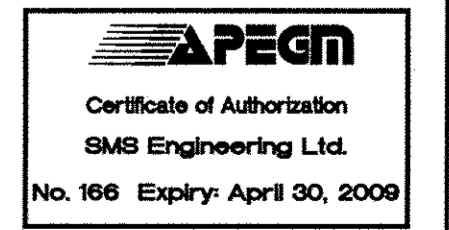
ALL EQUIPMENT SHOWN "FADED BACK" IS EXISTING TO REMAIN UNLESS OTHERWISE NOTED.

ALL EQUIPMENT SHOWN DASHED IS TO BE REMOVED UNLESS OTHERWISE NOTED.

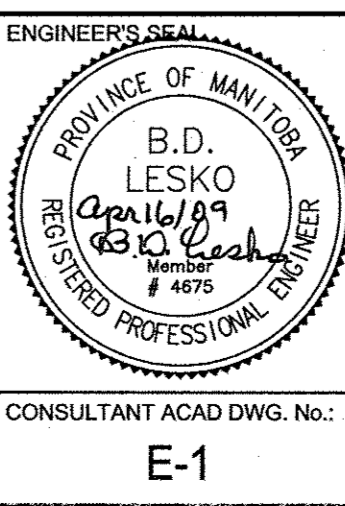
ALL EQUIPMENT SHOWN SOLID IS NEW TO BE INSTALLED UNLESS OTHERWISE NOTED.

GENERAL NOTES

- DO NOT SCALE OF THIS DRAWING. CONTRACTOR SHALL VERIFY ALL DIMENSIONS PRIOR TO INSTALLATION AND REPORT ANY DISCREPANCY TO THE ENGINEER.
- EXISTING ELECTRICAL EQUIPMENT SHOWN BASED ON RECENT SITE SURVEY. CONTRACTOR SHALL PERFORM A SITE WALK-THROUGH TO CONFIRM "AS-BUILT" CONDITIONS.
- REMOVED MATERIALS SHALL BE DISPOSED OF BY THE CONTRACTOR UNLESS CLAIMED AS SALVAGE BY THE CONTRACT ADMINISTRATOR.



G.B.M. ELEV.							
DESIGNED BY SB				CHECKED BY SB			
DRAWN BY IN				APPROVED BY BDL			
HOR. SCALE AS NOTED				RELEASED FOR CONSTRUCTION			
VERT. SCALE AS NOTED				SIGNED BY K. ZUREK			
DATE MAR. 2009				DATE APRIL 16, 2009			
No. REVISIONS				DATE			



THE CITY OF WINNIPEG
WATER AND WASTE DEPARTMENT

REHABILITATION TO THE STANDBY GENERATOR BUILDING AT MANITOBA AND KING EDWARD

ELECTRICAL DEMOLITION & NEW CONSTRUCTION

CITY DWG. NO. **6092**

SHEET 3 OF 3