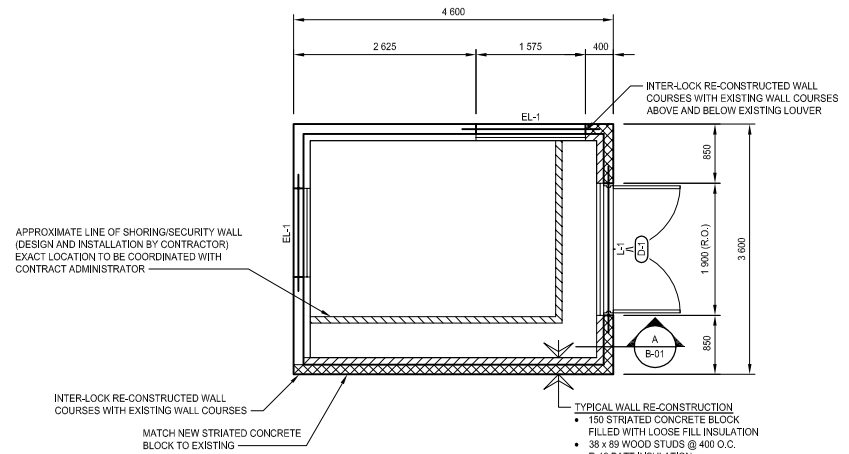
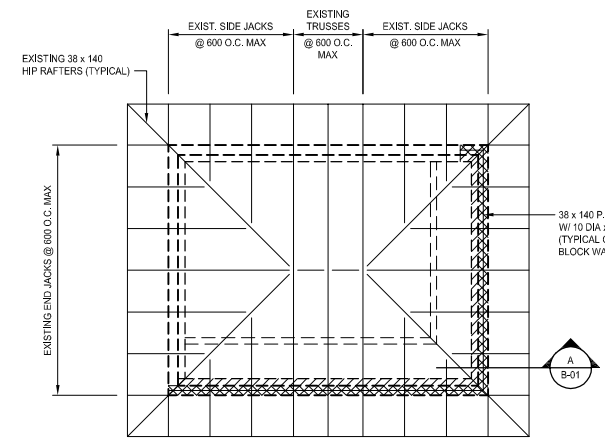


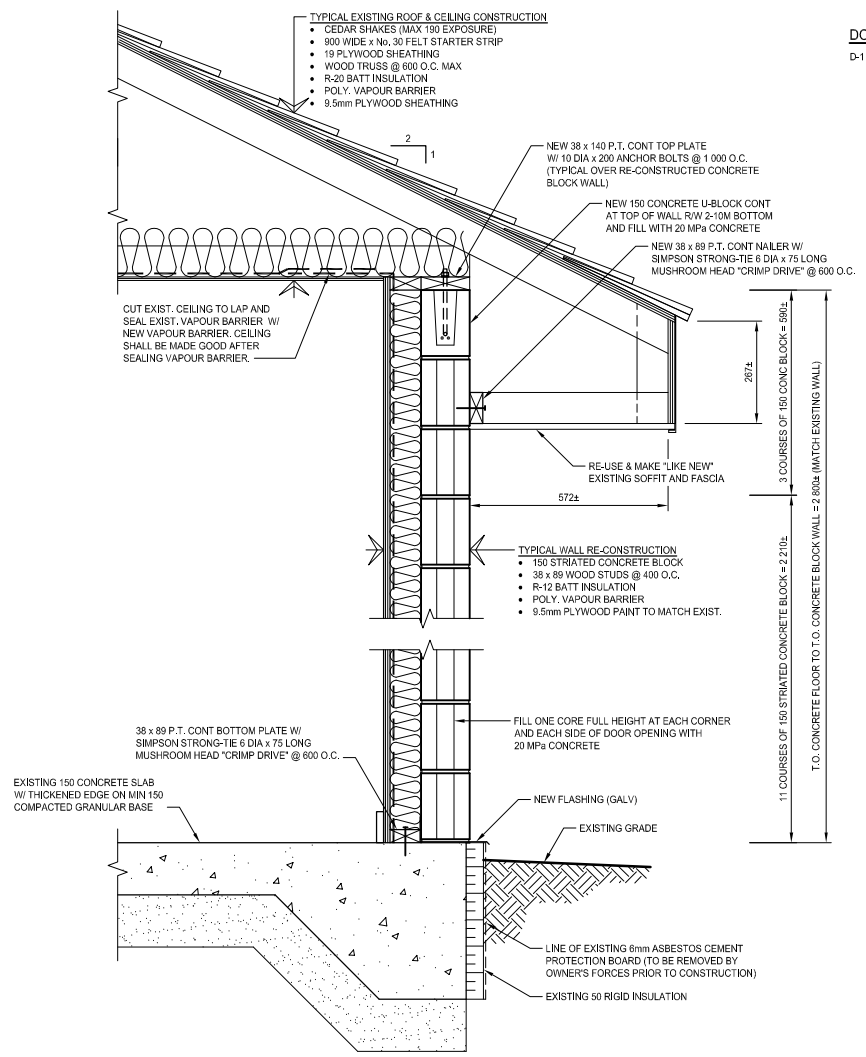
DEMOLITION PLAN  
1:50



FLOOR PLAN  
1:50



ROOF FRAMING PLAN  
1:50



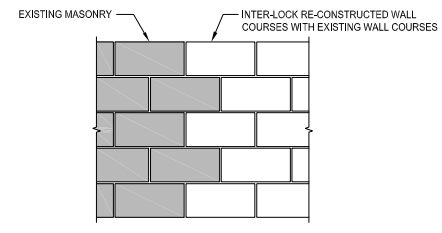
TYPICAL WALL SECTION  
1:10

LINTEL SCHEDULE:

- L-1 NEW LINTEL (SEE 'CONSTRUCTION NOTES')
- EL-1 EXISTING 150 CONCRETE U-BLOCK LINTEL

DOOR SCHEDULE:

- D-1 PRESSED STEEL FRAME & 2 - HOLLOW METAL DOORS IN 1 900 x 2 200 OPENING

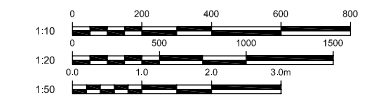


TYPICAL MASONRY INTER-LOCK  
1:20

COMMON ABBREVIATIONS

- ANC - ANCHOR
- APPROX - APPROXIMATE
- B.O. - BOTTOM OF
- BOT - BOTTOM
- C.I.P. - CAST IN PLACE
- CL - CENTRE LINE
- CSA - CANADIAN STANDARDS ASSOCIATION
- CONC - CONCRETE
- CONT - CONTINUOUS
- COV - COVER
- C/W - COMPLETE WITH
- DIA - DIAMETER
- EA - EACH
- EACH F. - EACH FACE
- E.S. - EACH SIDE
- E.W. - EACH WAY
- EXIST - EXISTING
- FIN. - FINISHED
- F.O. - FACE OF
- GALV - GALVANIZED
- HORIZ - HORIZONTAL
- LG - LONG
- m - METRES
- MAX - MAXIMUM
- MIN - MINIMUM
- mm - MILLIMETRES
- NA - NOT APPLICABLE
- N.I.C. - NOT IN CONTRACT
- No. - NUMBER
- NOM. - NOMINAL
- N.T.S. - NOT TO SCALE
- O.C. - ON CENTER
- PL - PLATE
- P.T. - PRESSURE TREATED
- REINF - REINFORCING
- R.O. - ROUGH OPENING
- RW - REINFORCE WITH
- T.O. - TOP OF
- TYP - TYPICAL
- UN.O. - UNLESS NOTED OTHERWISE
- US - UNDERSIDE
- VERT - VERTICAL
- W - WITH

SCALE LEGEND:



CONSTRUCTION NOTES

- GENERAL
1. DO NOT SCALE DRAWINGS.
2. VERIFY ALL DIMENSIONS SHOWN PRIOR TO COMMENCING CONSTRUCTION. REPORT ANY DISCREPANCIES TO THE CONTRACT ADMINISTRATOR.
3. STRUCTURAL DRAWINGS SHOWING THE COMPLETED STRUCTURE THEY DO NOT INDICATE COMPONENTS WHICH MAY BE NECESSARY FOR SAFETY DURING CONSTRUCTION.
4. REFER TO SPECIFICATION, E20 ASBESTOS REMEDIATION, IN BID OPPORTUNITY NO. 183-2009 FOR SAFE ASBESTOS REMOVAL PROCEDURES.

MASONRY

- 1. MASONRY WORK TO CONFORM TO CSA-A371 'MASONRY CONSTRUCTION FOR BUILDINGS'.
2. CONCRETE BLOCKS TO CONFORM TO CSA-A165-85 'CSA STANDARDS ON CONCRETE MASONRY UNITS'.
3. STANDARD HOLLOW MASONRY UNITS TO BE: H15A/M.
4. MORTAR TO CONFORM TO CSA-A179, TYPES BASED ON PROPORTION SPECIFICATIONS.
5. EXTERIOR BEARING WALLS: TYPE S
6. USE DURAWALL EVERY SECOND COURSE.
7. TOP COURSE OF BLOCK WALLS TO BE 'U' BLOCK WITH 2-10M REINFORCING STEEL CONTINUOUS AND 20 MPa CONCRETE FILL.
8. ALL MASONRY WALLS TO BE PROPERLY BRACED UNTIL STRUCTURE IS CLOSED IN.
9. U-BLOCK LINTELS OVER OPENING IN BLOCK WALL TO BE AS FOLLOWS UNLESS NOTED OTHERWISE:
a. UP TO 4'-0" (1 200 mm)
b. UP TO 8'-0" (2 400 mm)

ROUGH CARPENTRY

- 1. WALL STUDS AND PLATES TO BE SPF NO. 2 OR BETTER.

BATT INSULATION

- 1. MATERIAL: FIBERGLASS, FRICTION FIT, UNFACED
2. VAPOUR BARRIER: 6 MIL (15 mm) POLYETHYLENE. TAPE SEAL ALL JOINTS AND JUNCTIONS.
3. INSTALL INSULATION TO MAINTAIN CONTINUITY OF THERMAL BARRIER. FIT TIGHT TO PENETRATION. DO NOT COMPRESS.
4. INSTALL VAPOUR BARRIER ON WARM SIDE OF INSULATION COMPLETELY SEAL BY TAPING JOINTS AND PATCHING TEARS AND PENETRATIONS.

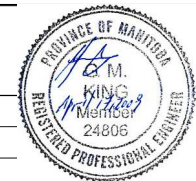
DOORS

- 1. EXTERIOR DOORS: 1 1/4" (45 mm) STEEL DOOR (18 GAUGE) WITH POLYURETHANE INSULATION FILL.
2. EXTERIOR FRAME: 16 GAUGE PRESSED STEEL FRAME, BATT INSULATION FILL, FIX TO WALL WITH MINIMUM OF 4 ANCHORS PER JAMB.
3. REFER TO SPECIFICATIONS FOR DOOR HARDWARE.

PAINTING

- 1. REFER TO SPECIFICATIONS FOR PAINT FINISHES AND FORMULA.
2. COLOR SCHEDULE:

Table with 3 columns: MARK, COLOUR, LOCATION. Row 1: PT-2, GP CL3173M EXCALIBUR, INT. PLYWOOD WALLS AND CEILING



THE CITY OF WINNIPEG WATER AND WASTE DEPARTMENT
REHABILITATION TO THE STANDBY GENERATOR BUILDING AT MANITOBA AND KING EDWARD
STRUCTURAL DEMOLITION & NEW CONSTRUCTION
6090 SHEET 1 OF 3

Design and revision table with columns: No., REVISIONS, DATE, BY, DATE, 09,03,06, DATE, APR, 17, 2009

Apr 20, 2009 - 14:55m P:\4200 - 009\4209\Emergency Repair to Standby Power Unit Building\dwg\10284\_Emergency Repair to Manitoba Avenue - S-01.dwg Job:Plan

NOTE: These design documents are prepared solely for the use by the party with whom the design professional has entered into a contract and there are no representations of any kind made by the design professional to any party with whom the design professional has not entered into a contract.

METRIC WHOLE NUMBERS INDICATE MILLIMETRES DECIMALIZED NUMBERS INDICATE METRES