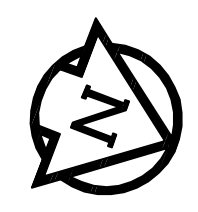
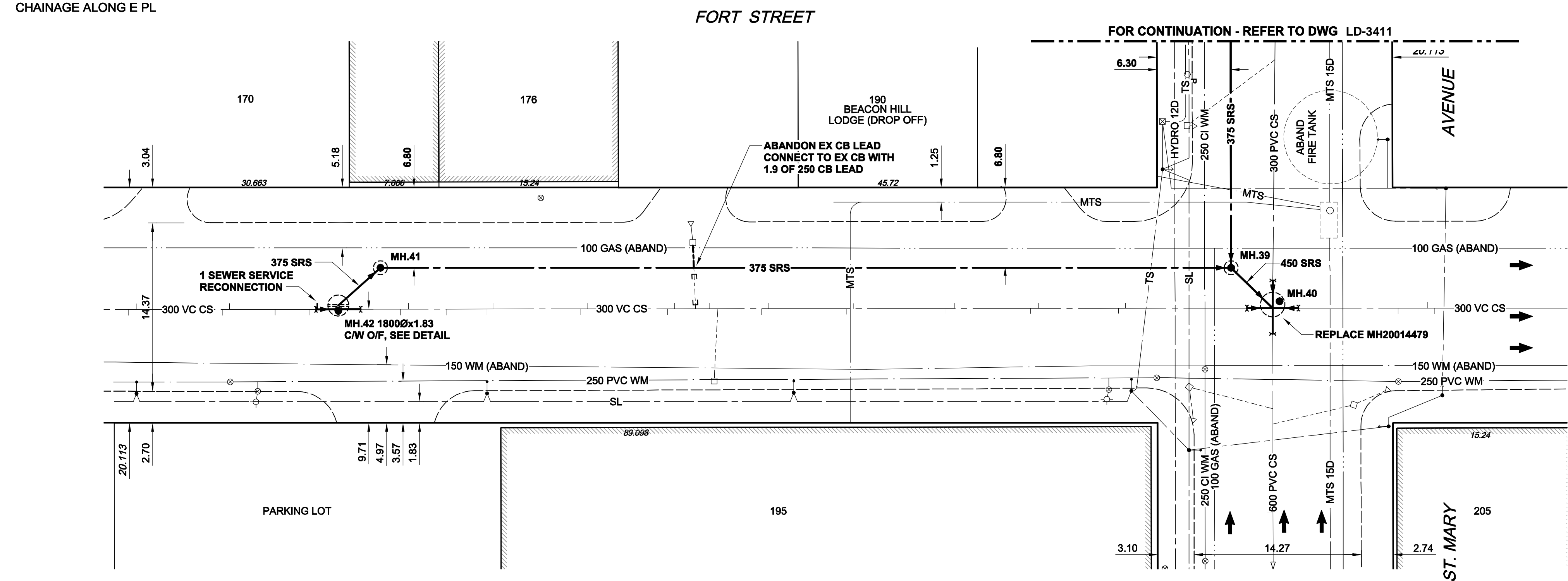
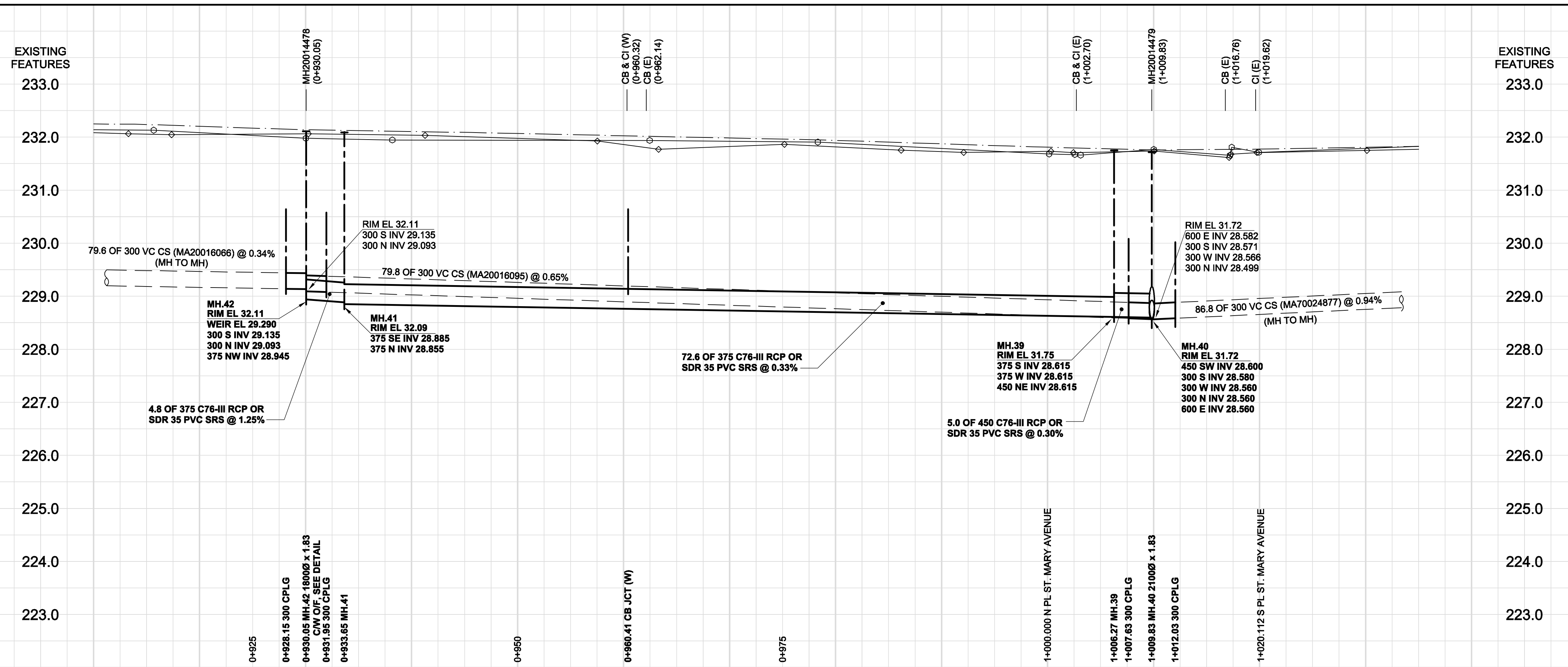


D SIZE 22" x 34" (559mm x 864mm)

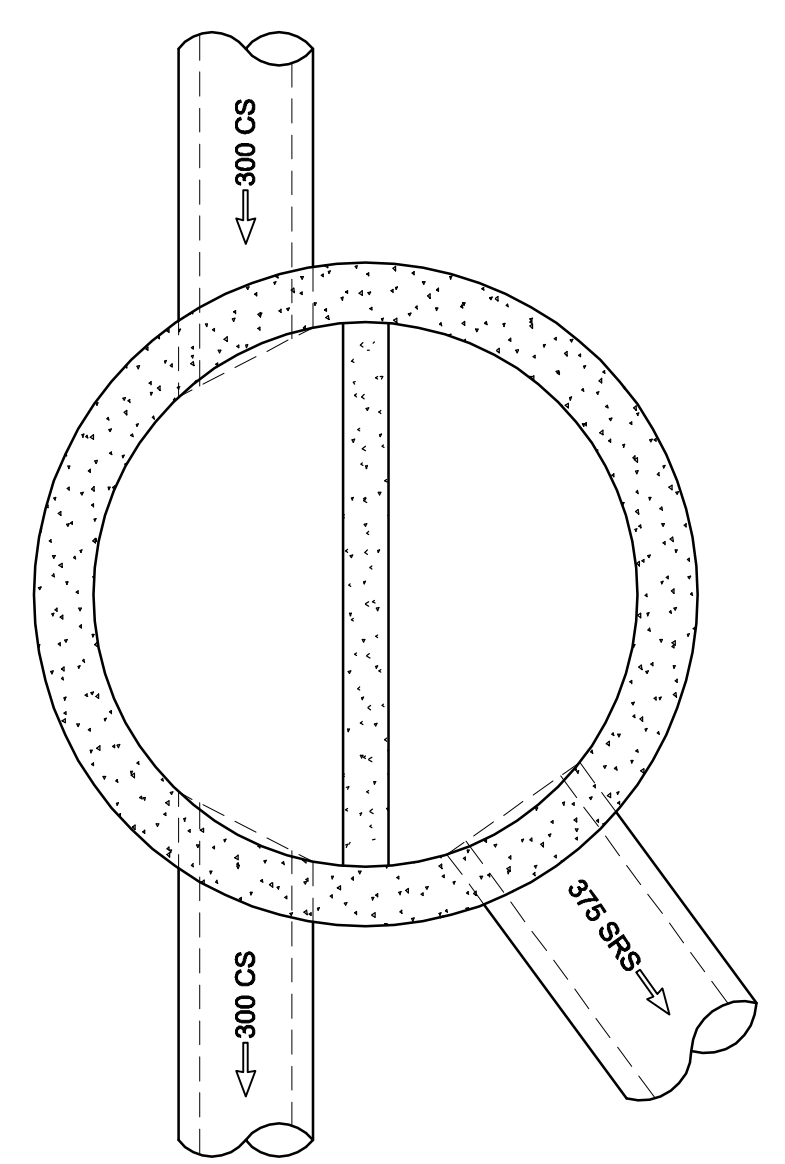
PLOT: 09/03/11 10:55:13 AM

JMA FILE NAME: D265-177-08_01-C-1018_RX.dwg Saved By: [REDACTED]

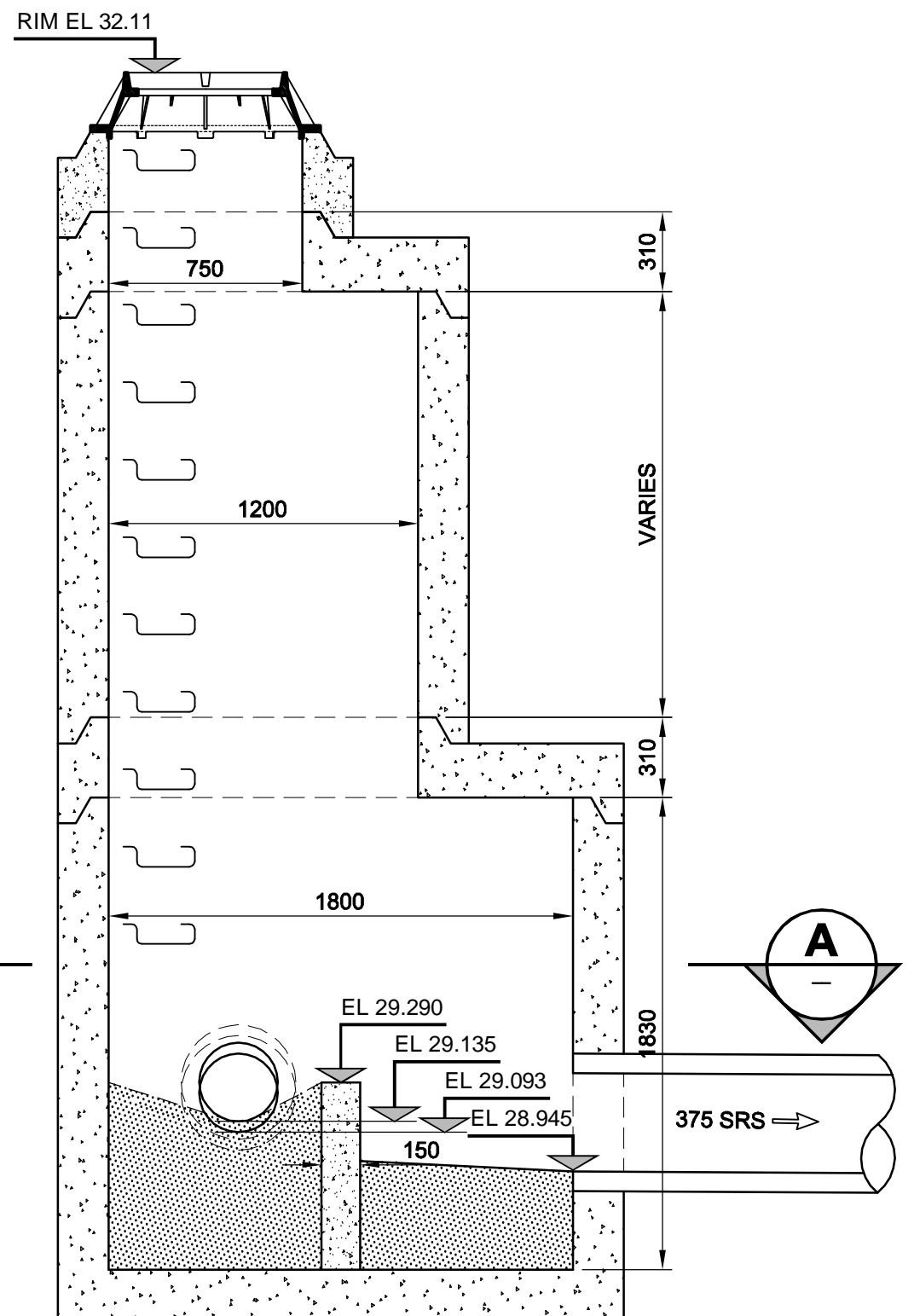


- CONSTRUCTION NOTES:
1. THE LOCATION OF ALL SERVICES IS TO BE CONFIRMED IN THE FIELD.
 2. INSTALL NEW SEWERS AND CATCHBASIN LEADS BY TRENCHLESS METHODS WHEREVER POSSIBLE.
 3. RENEW/REHABILITATE CATCHBASINS & RENEW CATCHBASIN LEADS WHERE NOTED.

APECM
Certificate of Authorization
AECOM Canada Ltd.
No. 4671 Date: March 10, 2009



A SECTION
SCALE 1:25
0 250 500 750 m



MANHOLE 42 OVERFLOW DETAIL
TYPICAL MANHOLE REQUIREMENTS AS PER SD-010
SCALE 1:25
0 0.25 0.5 0.75 m

150 mm WM	WATERMAIN	150 mm WM	150 mm WM	CURB STOP	150 mm WM	WATERMAIN	150 mm WM	LOCATION APPROVED
HYDRANT	HYDRANT	VALVE	VALVE	REDUCER	HYDRANT	HYDRANT	VALVE	UNDERGROUND STRUCTURES
300 mm LDS	LAND DRAINAGE SEWER	300 mm LDS	300 mm LDS	COUPLING	LAND DRAINAGE SEWER	LAND DRAINAGE SEWER	300 mm LDS	SUPR. U/G STRUCTURES DATE COMMITTEE
250 mm WWS	WASTE WATER SEWER	250 mm WWS	250 mm WWS	ANODE	WASTE WATER SEWER	WASTE WATER SEWER	250 mm WWS	NOTE:
MANHOLE	MANHOLE	MANHOLE	MANHOLE	HYDRO	PAVEMENT CROWN	PAVEMENT CROWN	250 mm WWS	LOCATION OF UNDERGROUND STRUCTURES AS SHOWN ARE BASED ON THE BEST INFORMATION AVAILABLE. BUT NO GUARANTEE IS GIVEN THAT ALL EXISTING UTILITIES ARE SHOWN OR THAT THE GIVEN LOCATIONS ARE EXACT. CONFIRMATION OF EXISTENCE AND EXACT LOCATION OF ALL SERVICES MUST BE OBTAINED FROM THE INDIVIDUAL UTILITIES BEFORE PROCEEDING WITH CONSTRUCTION.
CATCH BASIN	CATCH BASIN	CATCH BASIN	CATCH BASIN	MTS	N/W PROPERTY LINE	N/W PROPERTY LINE	250 mm WWS	
CURB INLET	CURB INLET	CURB INLET	CURB INLET	GAS	S/E PROPERTY LINE	S/E PROPERTY LINE	250 mm WWS	
CULVERT	CULVERT	CULVERT	CULVERT	TESTHOLE	N/W GUTTER	N/W GUTTER	250 mm WWS	
PIPE ABANDONMENTS	PIPE ABANDONMENTS	PIPE ABANDONMENTS	PIPE ABANDONMENTS	LAMP STANDARD	S/E GUTTER	S/E GUTTER	250 mm WWS	
SURVEY BAR	SURVEY BAR	SURVEY BAR	SURVEY BAR	TREE			250 mm WWS	
EXISTING	LEGEND - PLAN	NEW	EXISTING	LEGEND - PLAN	NEW	EXISTING	LEGEND - PROFILE	NEW

DESIGNED BY	GEB / DME	CHECKED BY	FMI
DRAWN BY	KMB	APPROVED BY	AN
HOR. SCALE	1:250	RELEASED FOR CONSTRUCTION	C. Boulet
VERT. SCALE	1:50	DATE	March 10 / 09
DATE	March 10, 2009		

NO.	REVISIONS	YYMMDD	BY
0	ISSUED FOR CONSTRUCTION	03/10/09	KMB

PROFESSIONAL'S SEAL
Revision 0
Issued for Construction
WAS SEALED BY
A. NAGY
AND DATED
March 10, 2009
CONSULTANT DRAWING NO. 18
D265-177-08

THE CITY OF WINNIPEG
WATER AND WASTE DEPARTMENT

ALEXANDER/BANNATYNE
COMBINED SEWER RELIEF
CONTRACT 8

63m N OF YORK AVENUE
TO ST. MARY AVENUE

SHEET 18 OF 18
CITY DRAWING NUMBER
LD-3412

BID OPPORTUNITY NO. 12-2009