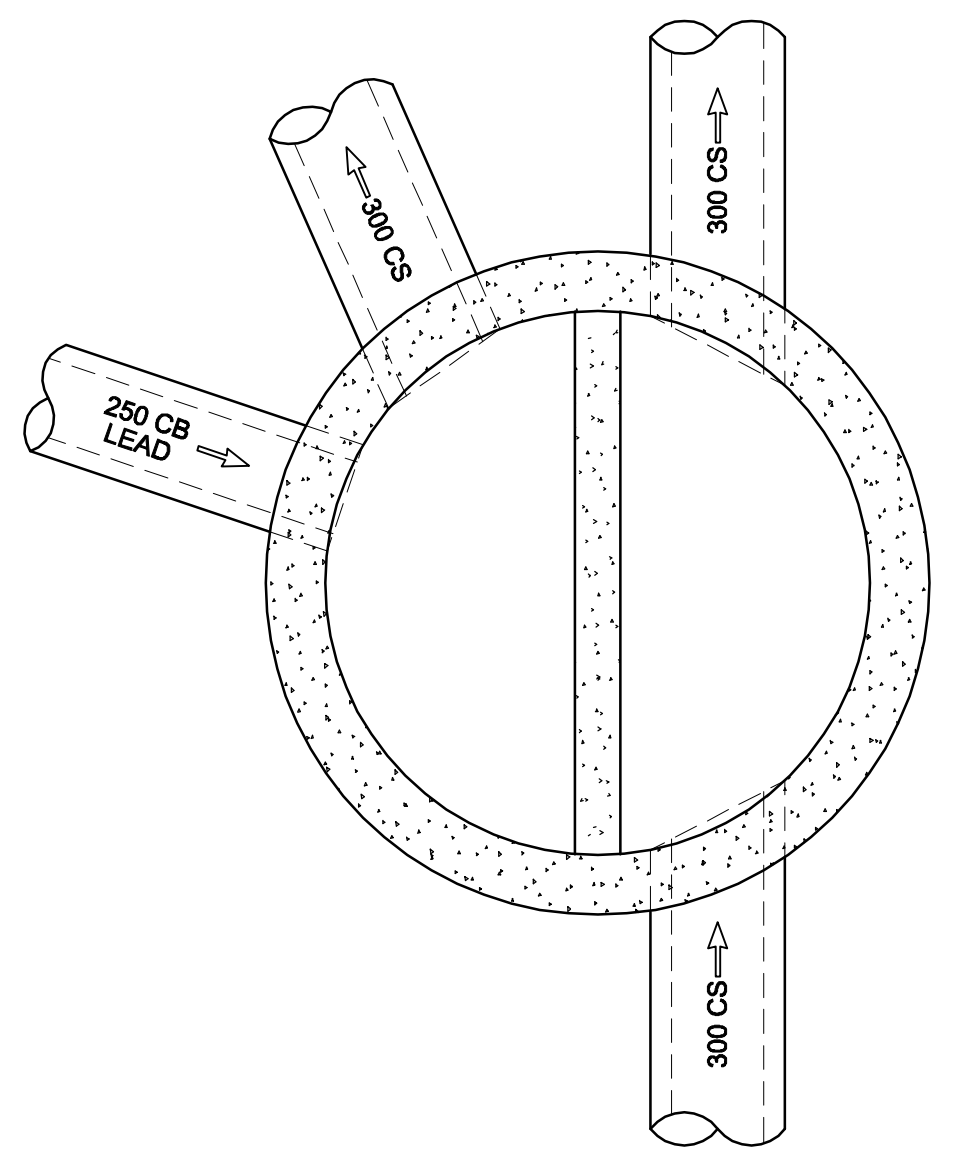
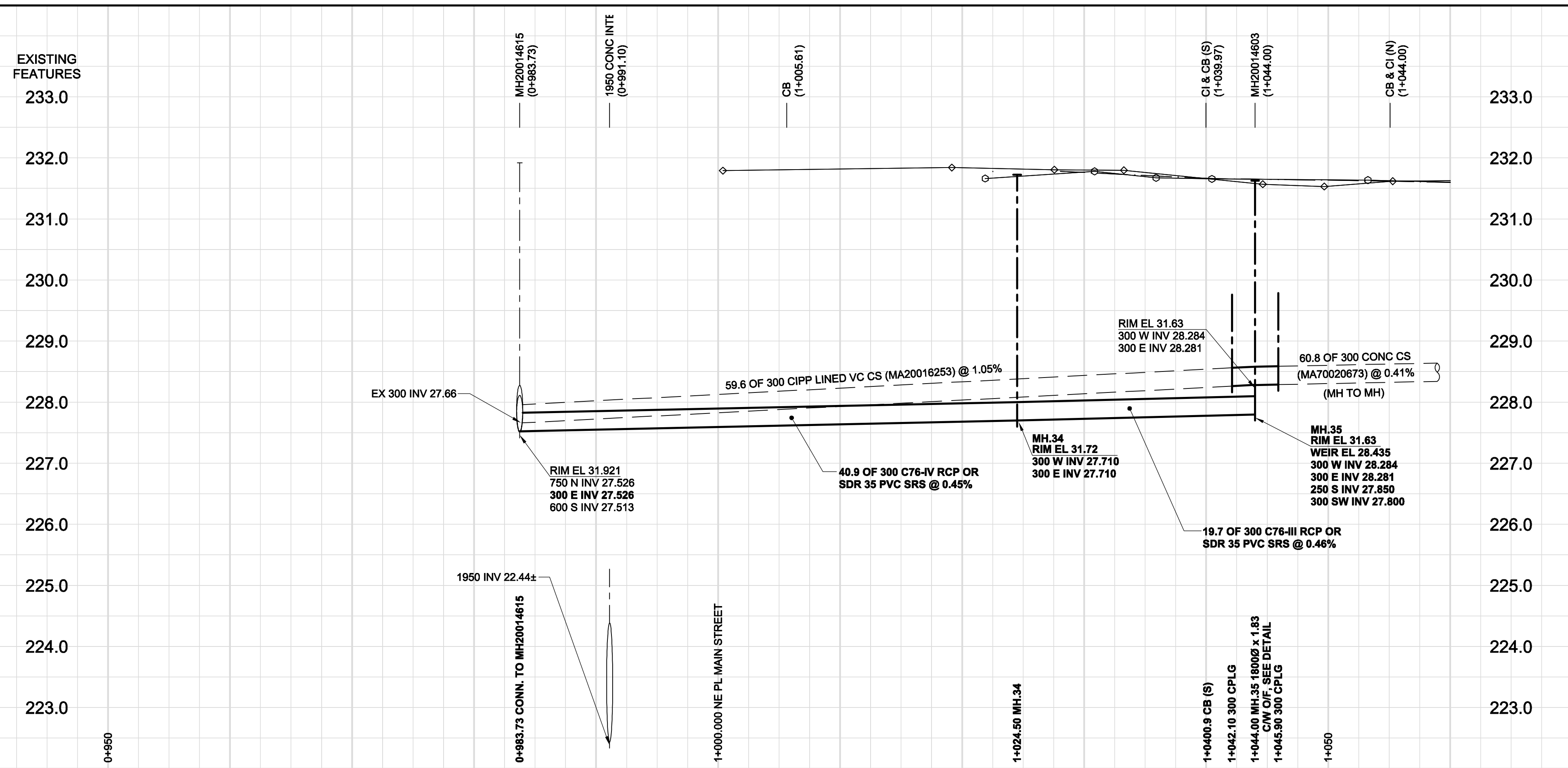


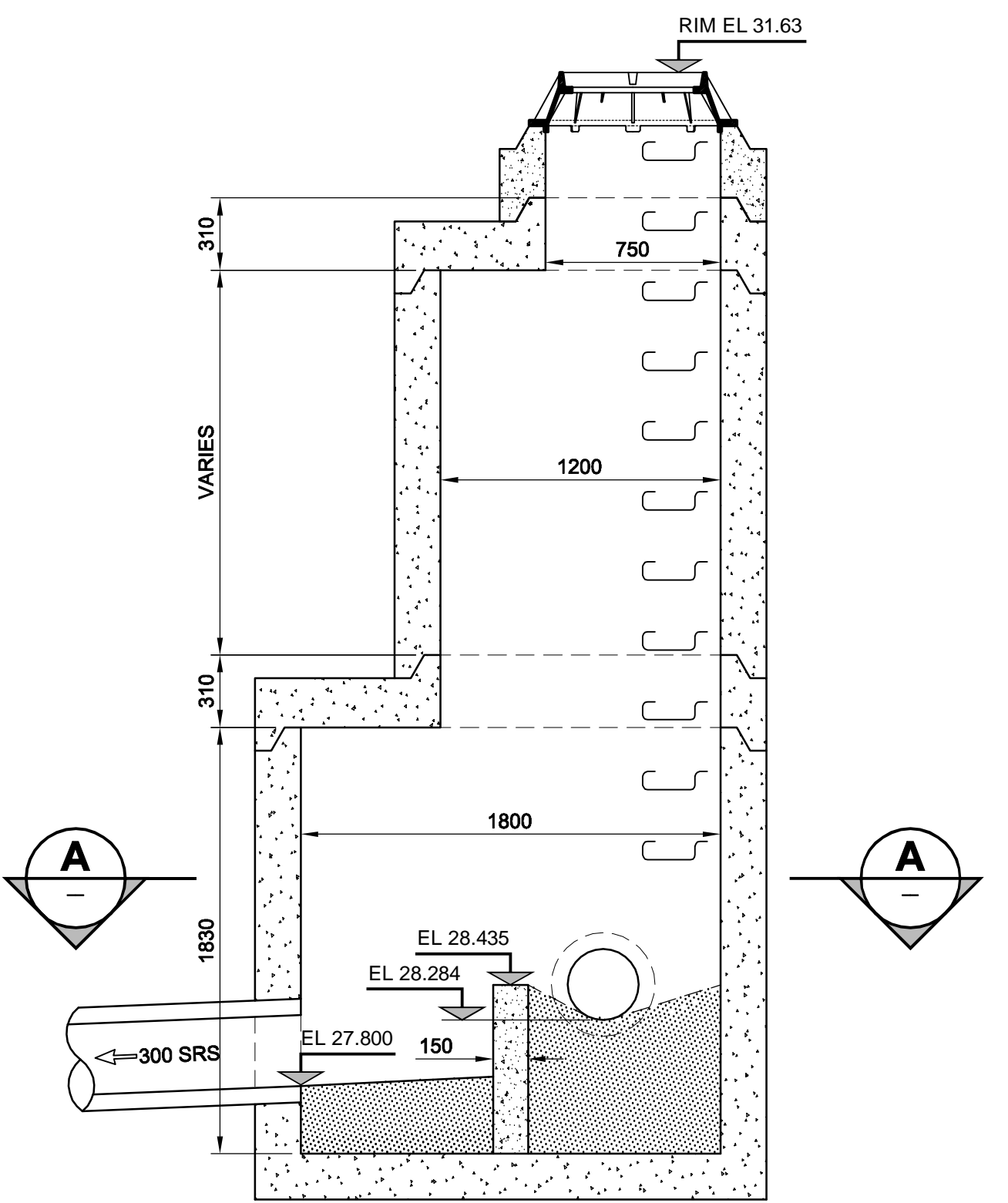
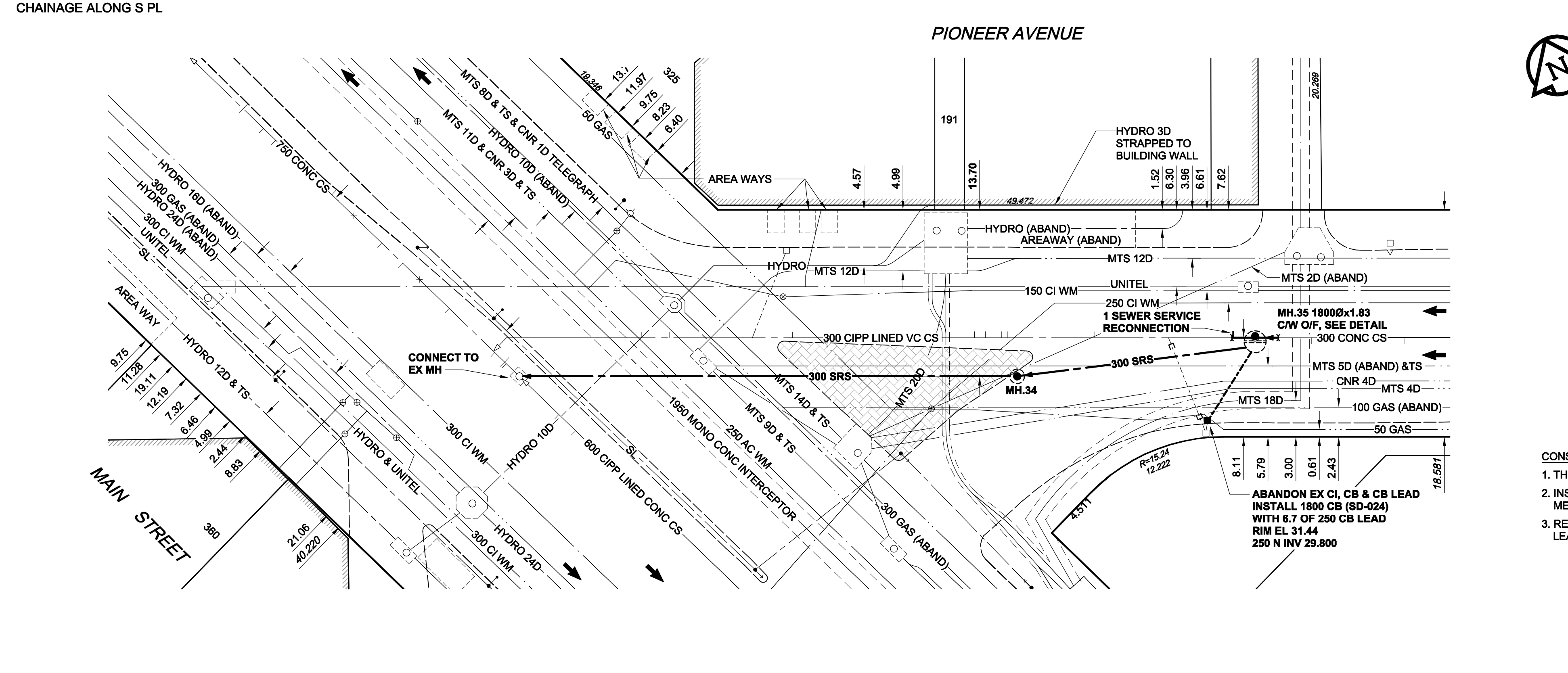
D SIZE 22" x 34" (559mm x 864mm)

PLOT: 09/03/11 10:51:36 AM

AECOM REVIEW DRFT CHK WJD
 JMA FILE NAME: D265-177-08_01-C-1015_PX.dwg Saved By: [redacted]



SECTION A
 SCALE 1:25
 0 250 500 750



MANHOLE 35 OVERFLOW DETAIL
 SCALE 1:25
 0 0.25 0.5 0.75
 TYPICAL MANHOLE REQUIREMENTS AS PER SD-010

- CONSTRUCTION NOTES:**
1. THE LOCATION OF ALL SERVICES IS TO BE CONFIRMED IN THE FIELD.
 2. INSTALL NEW SEWERS AND CATCHBASIN LEADS BY TRENCHLESS METHODS WHEREVER POSSIBLE.
 3. RENEW/REHABILITATE CATCHBASINS & RENEW CATCHBASIN LEADS WHERE NOTED.

APEGM
 Certificate of Authorization
 AECOM Canada Ltd.
 No. 4671 Date: March 10, 2009

BID OPPORTUNITY NO. 12-2009

EXISTING	LEGEND - PLAN	NEW	EXISTING	LEGEND - PROFILE	NEW	EXISTING	LEGEND - PROFILE	NEW
150 mm WM	WATERMAIN	150 mm WM	CURB STOP	150 mm WM	WATERMAIN	150 mm WM	WATERMAIN	150 mm WM
300 mm LDS	LAND DRAINAGE SEWER	300 mm LDS	REDUCER	300 mm LDS	HYDRANT	300 mm LDS	HYDRANT	300 mm LDS
250 mm WWS	WASTE WATER SEWER	250 mm WWS	COUPLING	250 mm WWS	VALVE	250 mm WWS	VALVE	250 mm WWS
MANHOLE	MANHOLE	MANHOLE	ANODE	MANHOLE	LAND DRAINAGE SEWER	MANHOLE	LAND DRAINAGE SEWER	MANHOLE
CATCH BASIN	CATCH BASIN	CATCH BASIN	HYDRO	CATCH BASIN	WASTE WATER SEWER	CATCH BASIN	WASTE WATER SEWER	CATCH BASIN
CURB INLET	CURB INLET	CURB INLET	MTS	CURB INLET	PAVEMENT CROWN	CURB INLET	PAVEMENT CROWN	CURB INLET
CULVERT	CULVERT	CULVERT	GAS	CULVERT	N/W PROPERTY LINE	CULVERT	N/W PROPERTY LINE	CULVERT
PIPE ABANDONMENTS	PIPE ABANDONMENTS	PIPE ABANDONMENTS	TESTHOLE	PIPE ABANDONMENTS	S/E PROPERTY LINE	PIPE ABANDONMENTS	S/E PROPERTY LINE	PIPE ABANDONMENTS
SURVEY BAR	SURVEY BAR	SURVEY BAR	LAMP STANDARD	SURVEY BAR	N/W GUTTER	SURVEY BAR	N/W GUTTER	SURVEY BAR
EXISTING	LEGEND - PLAN	NEW	TREE	EXISTING	S/E GUTTER	EXISTING	S/E GUTTER	EXISTING

LOCATION APPROVED UNDERGROUND STRUCTURES

SUPR. U/G STRUCTURES DATE COMMITTEE

NOTE: LOCATION OF UNDERGROUND STRUCTURES AS SHOWN ARE BASED ON THE BEST INFORMATION AVAILABLE. BUT NO GUARANTEE IS GIVEN THAT ALL EXISTING UTILITIES ARE SHOWN OR THAT THE GIVEN LOCATIONS ARE EXACT. CONFIRMATION OF EXISTENCE AND EXACT LOCATION OF ALL SERVICES MUST BE OBTAINED FROM THE INDIVIDUAL UTILITIES BEFORE PROCEEDING WITH CONSTRUCTION.

0	ISSUED FOR CONSTRUCTION	03/10/09	KMB
NO.	REVISIONS	YYMMDD	BY

AECOM

DESIGNED BY	GEB / DME	CHECKED BY	FMI
DRAWN BY	KMB	APPROVED BY	AN
HOR. SCALE	1:250	RELEASED FOR CONSTRUCTION	C. Boulet
VERT. SCALE	1:50	DATE	March 10 / 09
DATE	March 10, 2009	DATE	March 10 / 09

PROFESSIONAL'S SEAL
 Issued for Construction
 WAS SEALED BY
 A. NAGY
 AND DATED
 March 10, 2009
 CONSULTANT DRAWING NO. 15
 D265-177-08

THE CITY OF WINNIPEG
WATER AND WASTE DEPARTMENT

ALEXANDER/BANNATYNE
COMBINED SEWER RELIEF
CONTRACT 8
PIONEER AVENUE
 MAIN STREET
 TO 110m W OF WESTBROOK STREET

SHEET 15 OF 18
 CITY DRAWING NUMBER
LD-3409
 REV 0