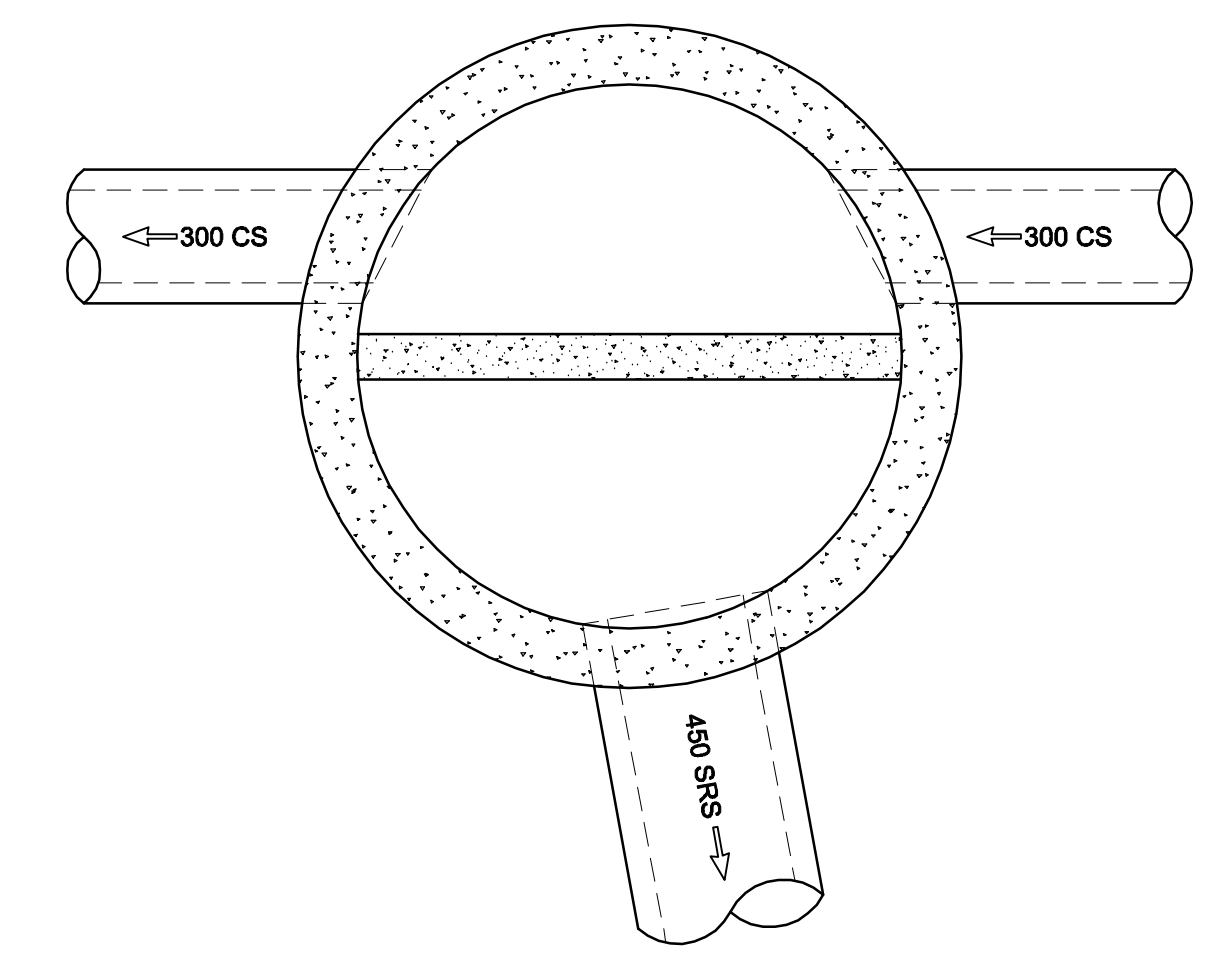
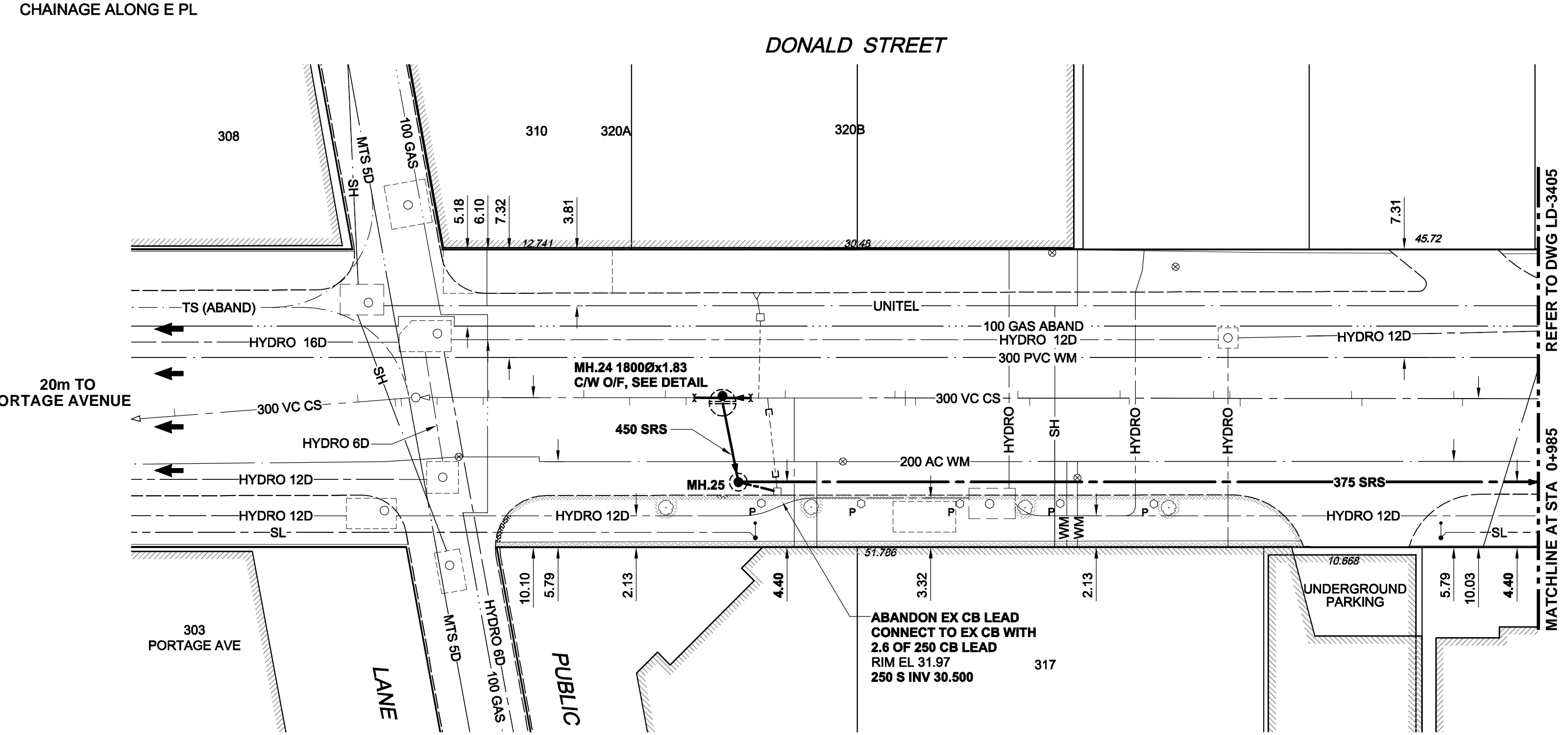
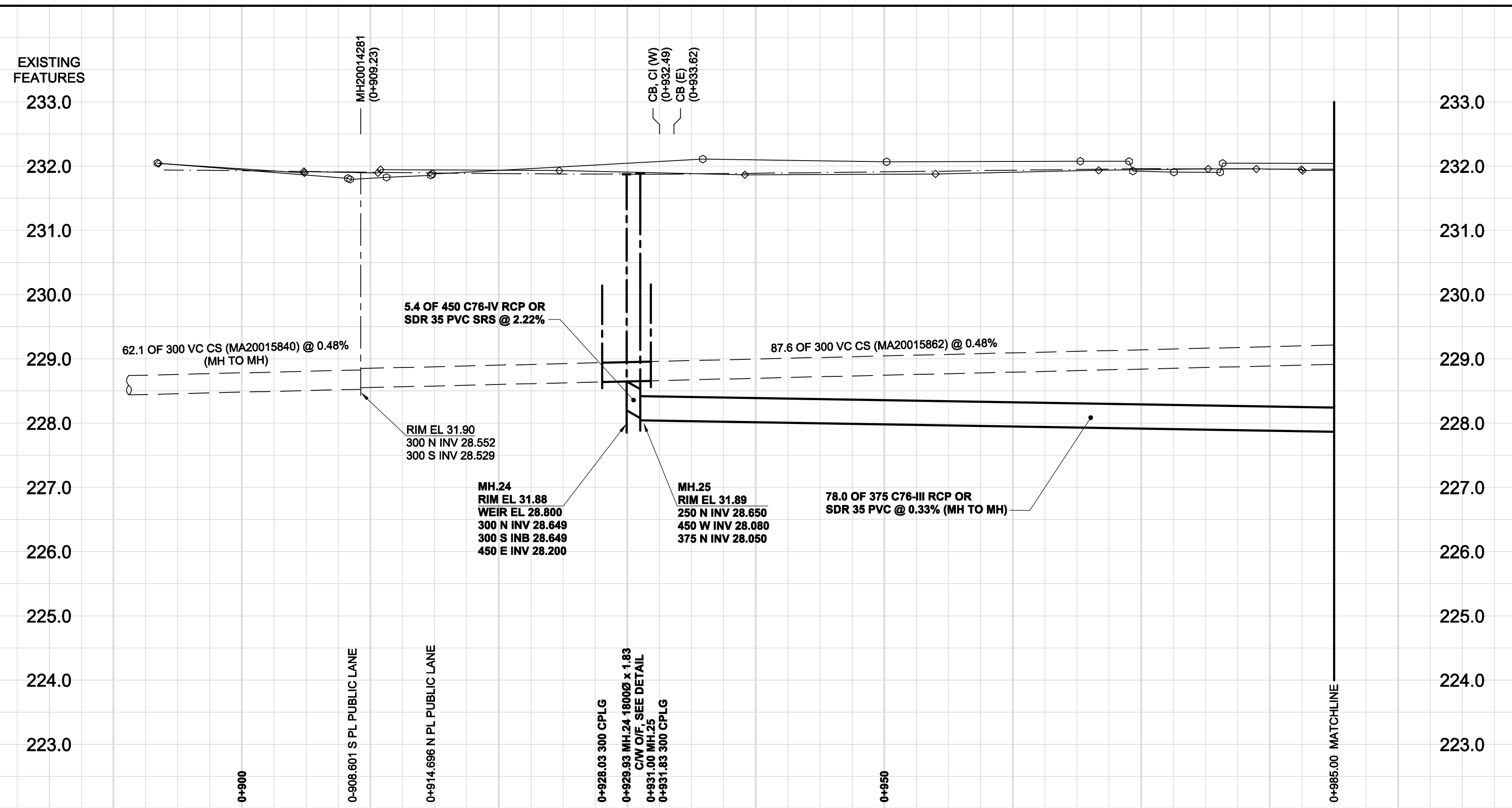


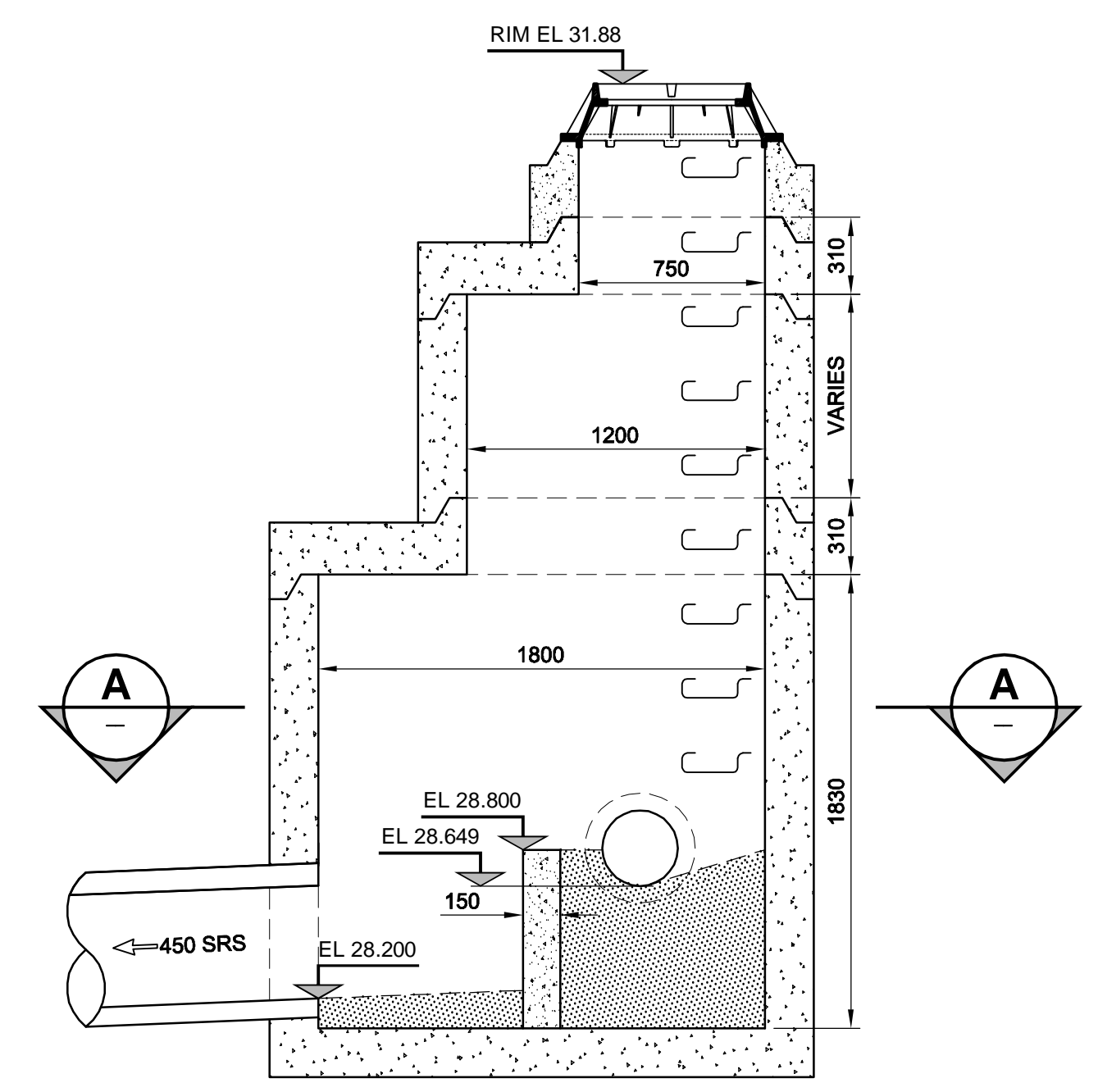
D SIZE 22" x 34" (559mm x 864mm)

PLOT: 09/03/11 10:25:35 AM

UJA FILE NAME: D265-177-08_01-C-1010_RX.dwg Saved By: [REDACTED]



SECTION A
SCALE 1:25



MANHOLE 24 OVERFLOW DETAIL

SCALE 1:25
TYPICAL MANHOLE REQUIREMENTS AS PER SD-010

- CONSTRUCTION NOTES:**
1. THE LOCATION OF ALL SERVICES IS TO BE CONFIRMED IN THE FIELD.
 2. INSTALL NEW SEWERS AND CATCHBASIN LEADS BY TRENCHLESS METHODS WHEREVER POSSIBLE.
 3. RENEW/REHABILITATE CATCHBASINS & RENEW CATCHBASIN LEADS WHERE NOTED.

APEGM
Certificate of Authorization
AECOM Canada Ltd.
No. 4671 Date: March 10, 2009

BID OPPORTUNITY NO. 12-2009

150 mm WM	WATERMAIN	150 mm WM	150 mm WM	CURB STOP	150 mm WM	WATERMAIN	150 mm WM
HYDRANT	VALVE	LAND DRAINAGE SEWER	WASTE WATER SEWER	REDUCER	HYDRANT	VALVE	LAND DRAINAGE SEWER
300 mm LDS	250 mm WWS	300 mm LDS	250 mm WWS	COUPLING	ANODE	HYDRO	MTS
MANHOLE	CATCH BASIN	CURB INLET	CULVERT	PIPE ABANDONMENTS	SURVEY BAR	EXISTING	NEW
EXISTING	LEGEND - PLAN	NEW	EXISTING	LEGEND - PLAN	NEW	EXISTING	LEGEND - PROFILE
NEW	LEGEND - PROFILE	NEW	EXISTING	LEGEND - PLAN	NEW	EXISTING	LEGEND - PROFILE

LOCATION APPROVED UNDERGROUND STRUCTURES

SUPR. U/G STRUCTURES DATE COMMITTEE

NOTE: LOCATION OF UNDERGROUND STRUCTURES AS SHOWN ARE BASED ON THE BEST INFORMATION AVAILABLE. BUT NO GUARANTEE IS GIVEN THAT ALL EXISTING UTILITIES ARE SHOWN OR THAT THE GIVEN LOCATIONS ARE EXACT. CONFIRMATION OF EXISTENCE AND EXACT LOCATION OF ALL SERVICES MUST BE OBTAINED FROM THE INDIVIDUAL UTILITIES BEFORE PROCEEDING WITH CONSTRUCTION.

NO.	ISSUED FOR CONSTRUCTION	03/10/09	KMB
NO.	REVISIONS	YYMMDD	BY

AECOM

DESIGNED BY	GEB / DME	CHECKED BY	FMI
DRAWN BY	KMB	APPROVED BY	AN
HOR. SCALE	1:250	RELEASED FOR CONSTRUCTION	C. Boulet
VERT. SCALE	1:50	DATE	March 10 / 09

PROFESSIONAL'S SEAL
Revision 0
Issued for Construction
WAS SEALED BY
A. NAGY
AND DATED
March 10, 2009
CONSULTANT DRAWING NO. 10
D265-177-08

THE CITY OF WINNIPEG
WATER AND WASTE DEPARTMENT

ALEXANDER/BANNATYNE
COMBINED SEWER RELIEF
CONTRACT 8
DONALD STREET
20m N OF PORTAGE AVENUE
TO 15m S OF ELLICE AVENUE

SHEET 10 OF 18
CITY DRAWING NUMBER
LD-3404
REV 0