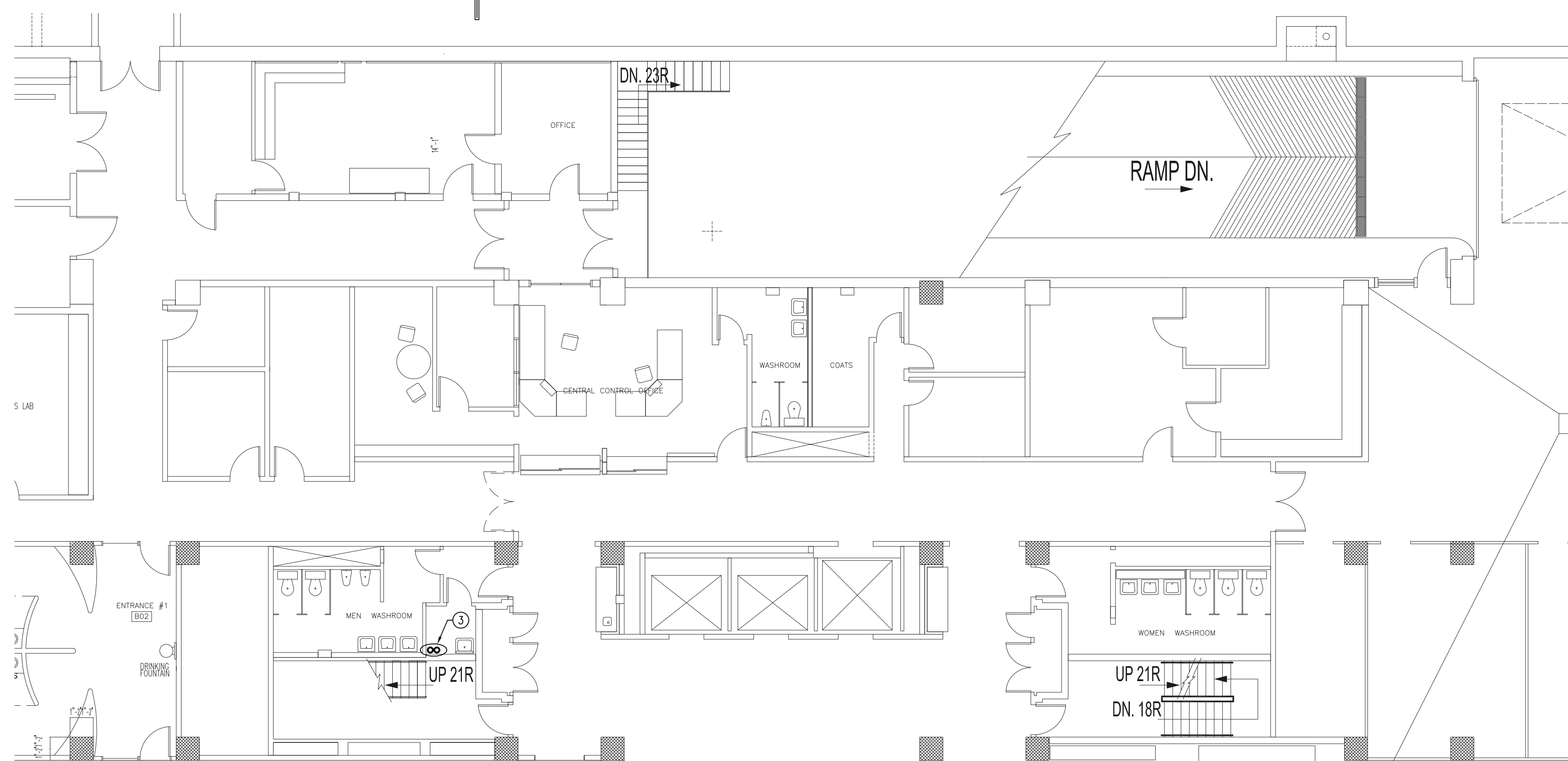


PART SUB-BASEMENT PLAN - FUEL OIL PIPE ROUTING
SCALE: 1:50



PART BASEMENT PLAN - FUEL OIL PIPE ROUTING
SCALE: 1:50

DRAWING NOTES #

1. NEW 38# FOS AND FOR PIPING IN 2-HOUR FIRE RATED INSULATION.
2. RISE UP TO BASEMENT AT THIS LOCATION.
3. RISE UP TO NEXT ADJACENT LEVEL ABOVE AT THIS LOCATION (TYPICAL) INTO PENTHOUSE. CARRY 2-HOUR FIRE RATING UP THE ENTIRE VERTICAL RUN.

NO.	REVISION/DESCRIPTION	BY	DATE
SEALS			

APEGM
 Certificate of Authorization
 SMS Engineering Ltd.
 No. 166 Expiry: April 30, 2010

PRELIMINARY
 DATE PLOTTED
 April 27, 2009
 NOT FOR CONSTRUCTION

DRAWN BY	RR/JC	CHECKED BY	RL	APPROVED BY	RL
DATE	2009.01.16	USER	APPROVAL		

CITY OF WINNIPEG
 PLANNING, PROPERTY &
 DEVELOPMENT DEPARTMENT
 CIVIC ACCOMMODATIONS DIVISION
 300 - 65 GARRY ST. R3C 4K4

PROJECT
 CITY OF WINNIPEG 510 MAIN ST.
 EMERGENCY DISTRIBUTION UPGRADE
 PHASE 1

SHEET TITLE
 SUB-BASEMENT AND BASEMENT PLANS
 PROPOSED LOCATION FOR
 FUEL OIL PIPING RUN

SMS ENGINEERING

SMS Engineering Ltd. Consulting Engineers
 770 Bradford Street Winnipeg MB Canada R3M 0G3
 Telephone: 204.775.0291 Fax: 204.772.2153
 sms@smseng.com

SCALE	PROJECT NO.	SHEET NO.
AS SHOWN	07-232-01	M3.0