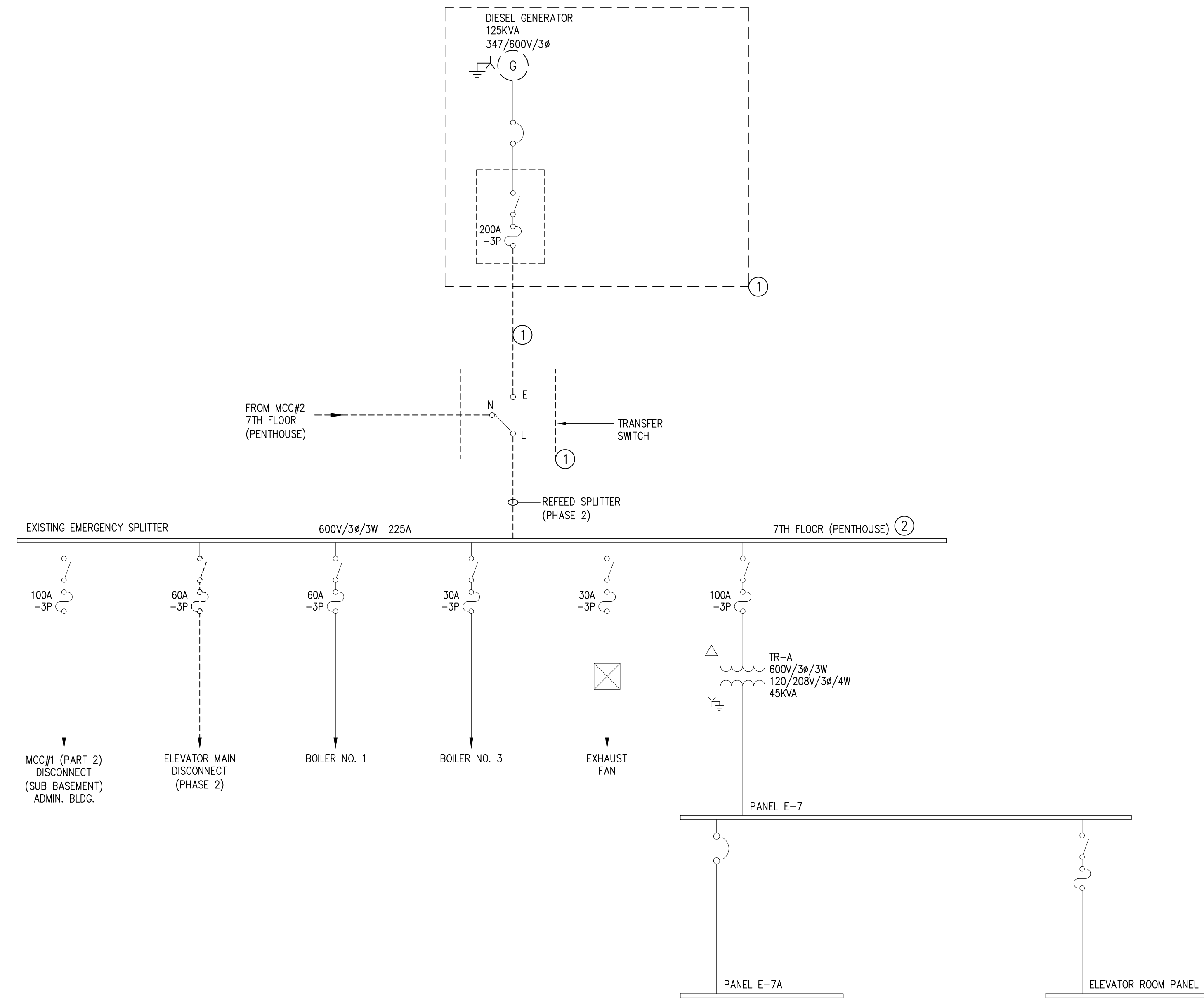


NOTES :

**DRAWING NOTES** #

- ISSUED FOR INFORMATION ONLY. EXISTING EQUIPMENT TO REMAIN UNTIL COMPLETION OF PHASE 2, AFTER WHICH IT IS TO BE DEMOLISHED.
- REFEED IN PHASE 2 FROM NEW EMERGENCY CDP.



1. ISSUED FOR OWNER'S FINAL REVIEW CB 09.04.24

NO.	REVISION/DESCRIPTION	BY	DATE

SEALS

**APEGM**  
Certificate of Authorization  
SMS Engineering Ltd.  
No. 166 Expiry: April 30, 2009

**PRELIMINARY**  
DATE PLOTTED  
March 31, 2009  
**NOT FOR CONSTRUCTION**

DRAWN BY	CHECKED BY	APPROVED 80L
KAM	CR	
DATE	USER APPROVAL	

**CITY OF WINNIPEG**  
PLANNING, PROPERTY & DEVELOPMENT DEPARTMENT  
CIVIC ACCOMMODATIONS DIVISION  
300 - 65 GARRY ST. R3C 4K4

PROJECT  
CITY OF WINNIPEG 510 MAIN ST.  
EMERGENCY DISTRIBUTION UPGRADE  
PHASE 1

SHEET TITLE  
EXISTING EMERGENCY GENERATOR  
SINGLE LINE SCHEMATIC

**SMS ENGINEERING**

SMS Engineering Ltd. Consulting Engineers 770 Bradford Street Winnipeg MB Canada R3M 0G3 Telephone: 204.775.2291 Fax: 204.772.2153 www.smseng.com	SCALE AS SHOWN	PROJECT NO. 07-232-01	SHEET NO. E3.2
--	-------------------	--------------------------	-------------------

DRAWING SHEET SIZE: A1 (841mm x 594mm) PLOT 1:1