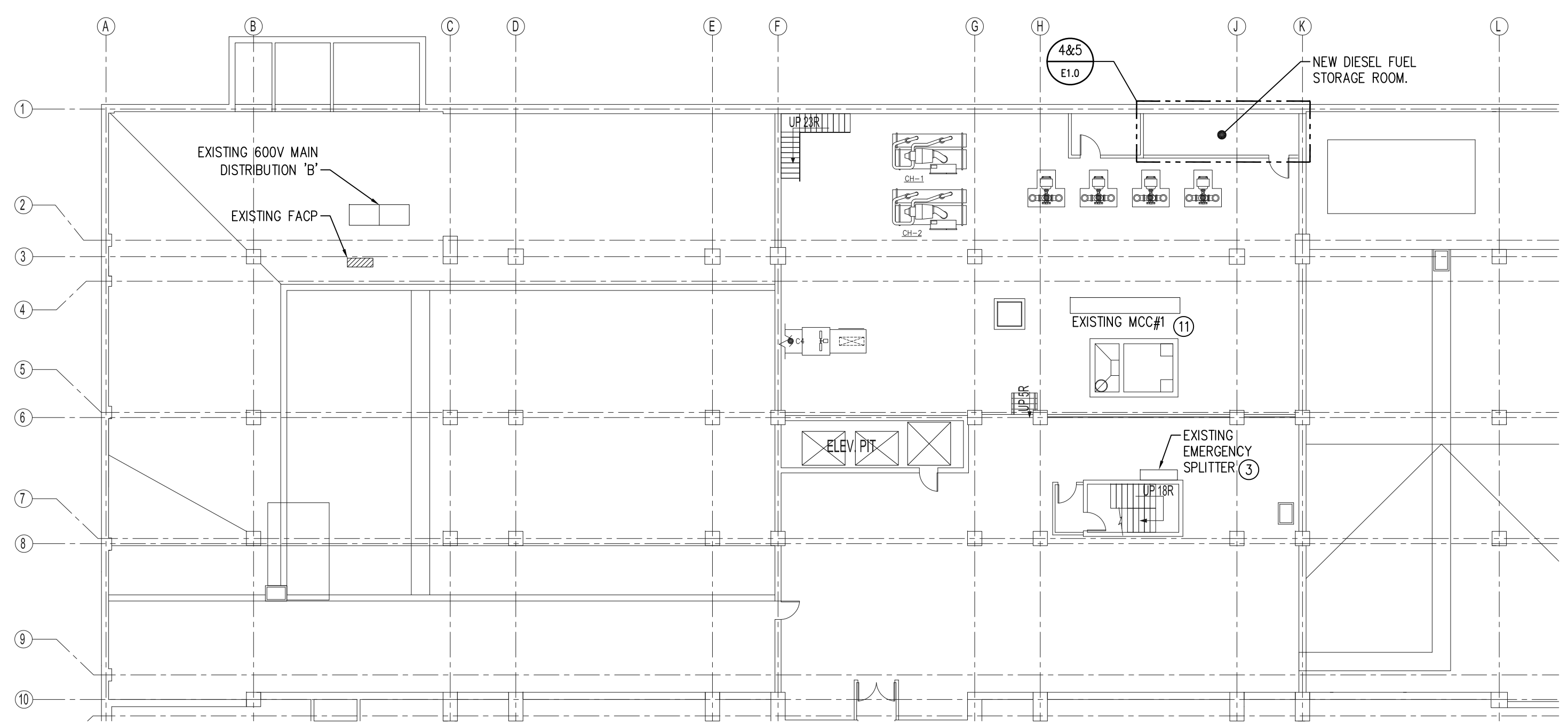
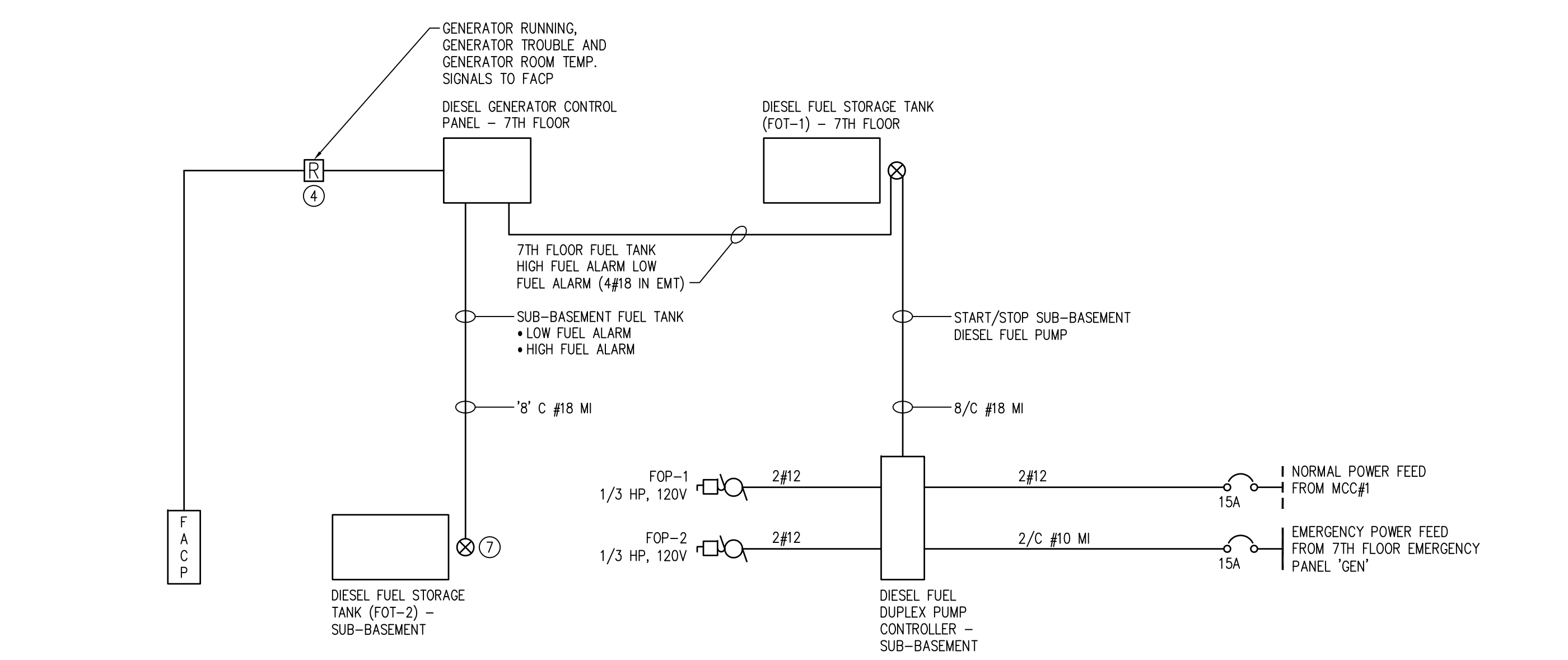


**1 SITE PLAN**  
SCALE: 1:500

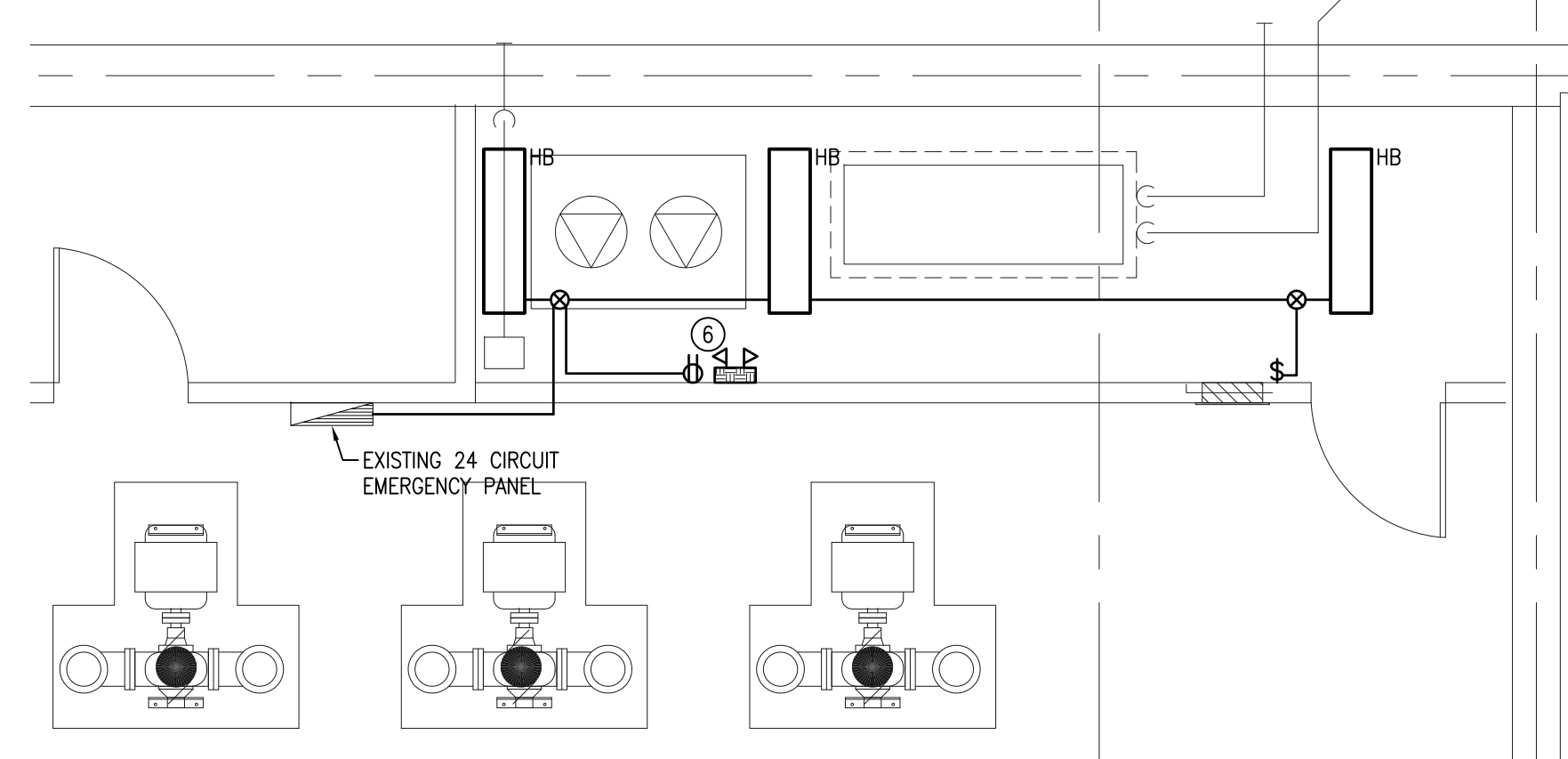


**2 PART SUB BASEMENT LEVEL**  
SCALE: 1:200

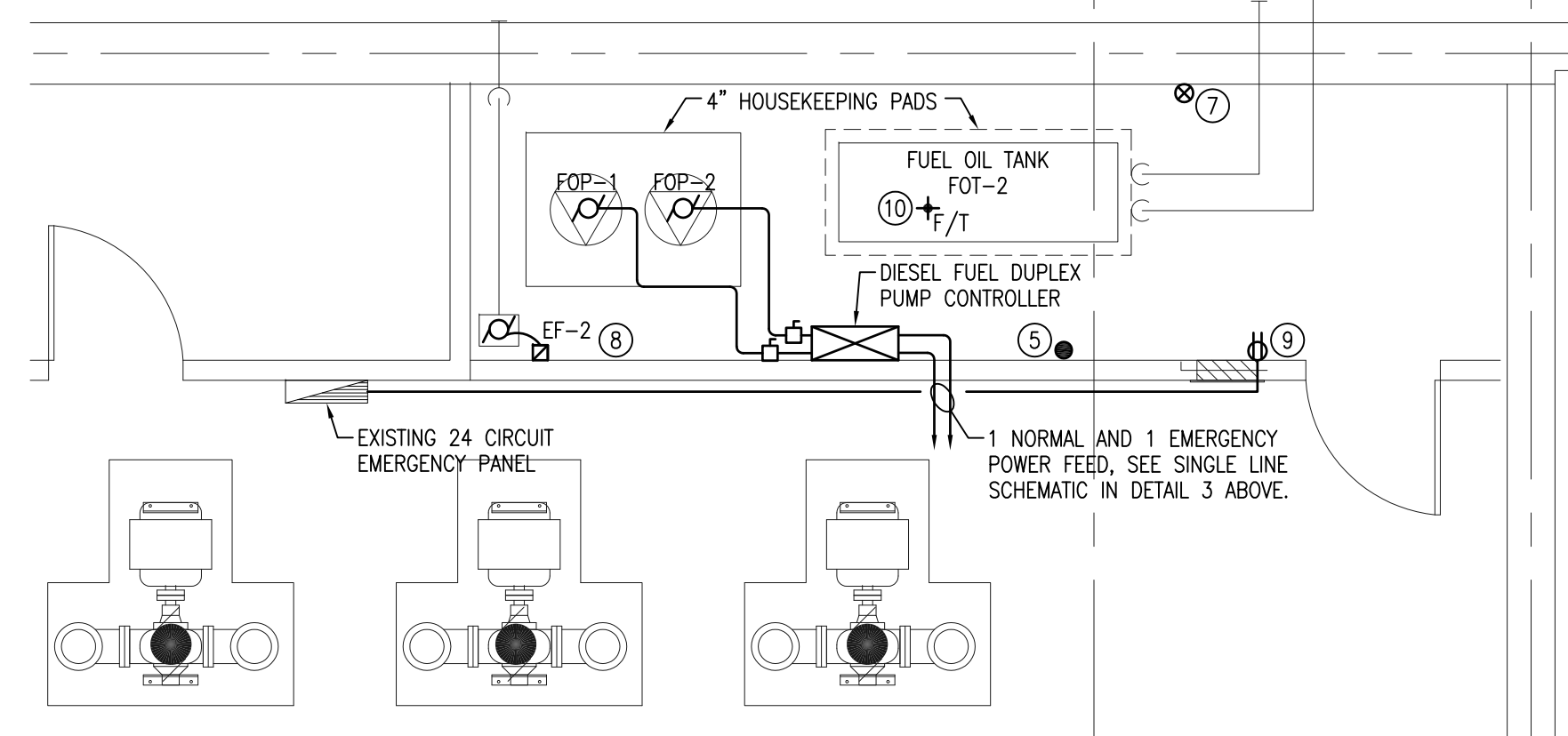


**3 FIRE ALARM INTERCONNECTION AND DIESEL FUEL DUPLEX PUMP CONTROLLER SINGLE LINE SCHEMATIC**  
SCALE: N.T.S.

• NOTE: FOP-1 AND FOP-2 ARE 100% REDUNDANT. (ONLY 1 RUNS AT ONE TIME)  
• ELECTRICAL CONTRACTOR TO PROVIDE CONDUIT AND WIRING FOR DIESEL FUEL STORAGE TANK CONTROL. WIRE AND CONNECT CONTROLS AS PER CONTROL SHOP DRAWINGS.



**4 NEW DIESEL FUEL STORAGE ROOM - LIGHTING**  
SCALE: 1:50



**5 NEW DIESEL FUEL STORAGE ROOM - POWER & SYSTEMS**  
SCALE: 1:50

**GENERAL NOTES**

1. QUANTITY AND SIZE OF GENERATOR CONTROL/FUEL SYSTEM CONTROL WIRING IS TYPICAL AND SHALL BE COORDINATED BY CONTRACTORS. PROVIDE WIRE QUANTITY AND SIZE REQUIRED BY GENERATOR SUPPLIER.

**DRAWING NOTES**

1. NOT USED.
2. NOT USED.
3. PROVIDE A SEPERATE PRICE TO REPLACE EXISTING SPLITTER WITH A CDP.
4. PROVIDE ADDRESSABLE RELAYS AT DIESEL GENERATOR CONTROL PANEL TO ANNUNCIATE
  - GENERATOR RUNNING
  - GENERATOR TROUBLE
  - GENERATOR ROOM TEMP.
 CONNECT TO EXISTING EDWARDS ADDRESSABLE FIRE ALARM PANEL.
5. NEW FIRE ALARM TO BE CONNECTED TO NEAREST EXISTING AUDIBLE DEVICE.
6. DC BATTERY PACK C/W 2 - 9W HEADS, 60 MINUTE CAPACITY. PROVIDE A DEDICATED EMERGENCY CIRCUIT 15A-1P FOR ROOM LIGHTS AND BATTERY PACK.
7. SUB-BASEMENT DIESEL FUEL STORAGE TANK CONNECTION TO DIESEL GENERATOR CONTROL PANEL ON 7TH FLOOR. FOLLOW FUEL OIL PIPING PATH UP TO FOT-1.
8. 120V, 15A-1P DEDICATED CIRCUIT FOR EF-2, FEED FROM EXISTING 24 CIRCUIT EMERGENCY PANEL.
9. 120V, 15A-1P DEDICATED CIRCUIT FOR DUPLEX OUTLET.
10. CONNECT NEW DEVICE TO CLOSEST EXISTING ADDRESSABLE DEVICE.
11. ADD 15A-1P BREAKER TO 120V PANEL TO FEED FOP-1.

1. ISSUED FOR OWNER'S FINAL REVIEW CB 09.04.24

NO.	REVISION/DESCRIPTION	BY	DATE

SEALS

**APEGM**  
Certificate of Authorization  
SMS Engineering Ltd.  
No. 166 Expiry: April 30, 2009

**PRELIMINARY**  
DATE PLOTTED  
April 6, 2009  
NOT FOR CONSTRUCTION

DRAWN BY	CHECKED BY	APPROVED CH
KM	CR	

DATE: 2009.04.17 USER APPROVAL

CITY OF WINNIPEG  
PLANNING, PROPERTY &  
DEVELOPMENT DEPARTMENT  
CIVIC ACCOMMODATIONS DIVISION  
300 - 65 GARRY ST. R3C 4K4

PROJECT  
CITY OF WINNIPEG 510 MAIN ST.  
EMERGENCY DISTRIBUTION UPGRADE  
PHASE 1

SHEET TITLE  
SITE PLAN AND BASEMENT  
LEVEL PLAN

**SMS ENGINEERING**

SMS Engineering Ltd. Consulting Engineers  
770 Bradford Street Winnipeg MB Canada R3M 0K3  
Telephone: 204.775.2091 Fax: 204.772.2153  
www.smseng.com

SCALE	PROJECT NO.	SHEET NO.
AS SHOWN	07-232-01	E1.0

DRAWING SHEET SIZE: A1 (841mm x 594mm) PLOT 1:1