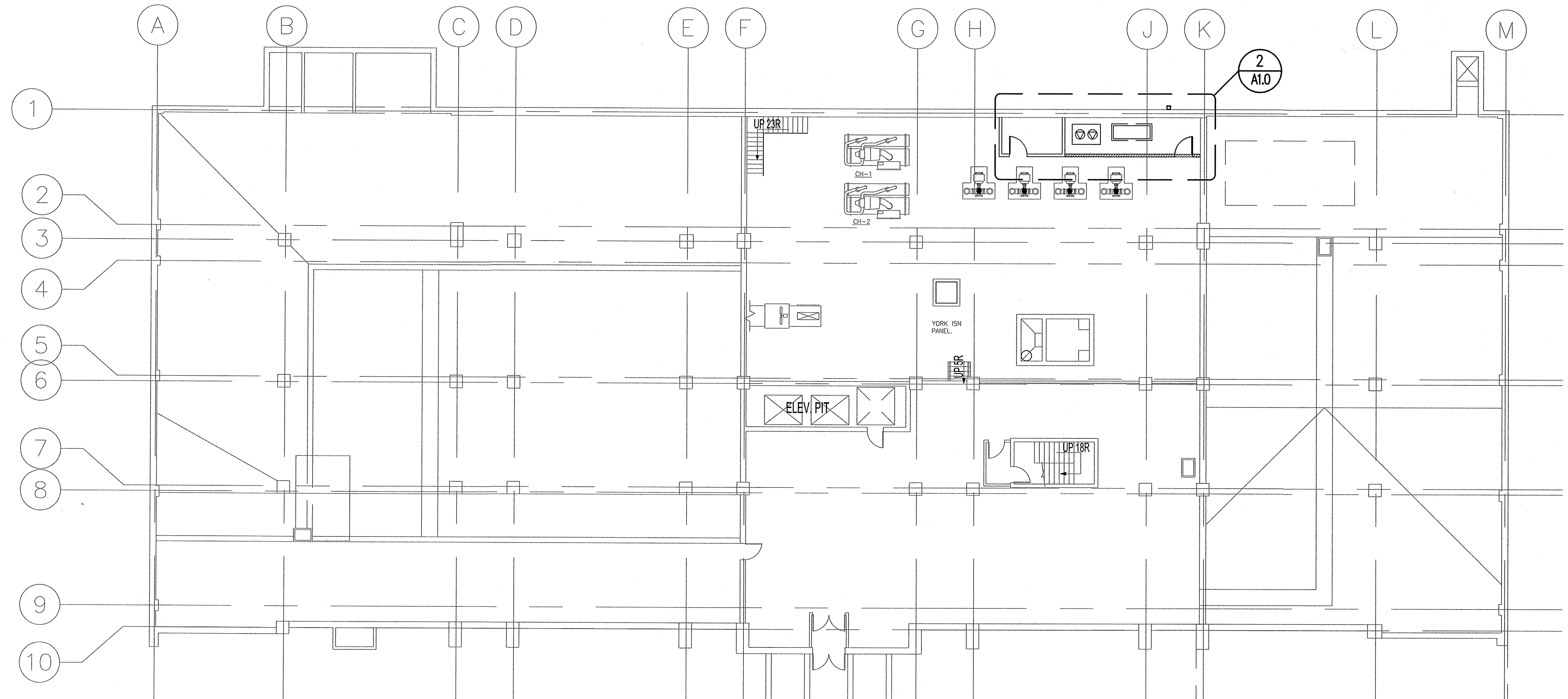
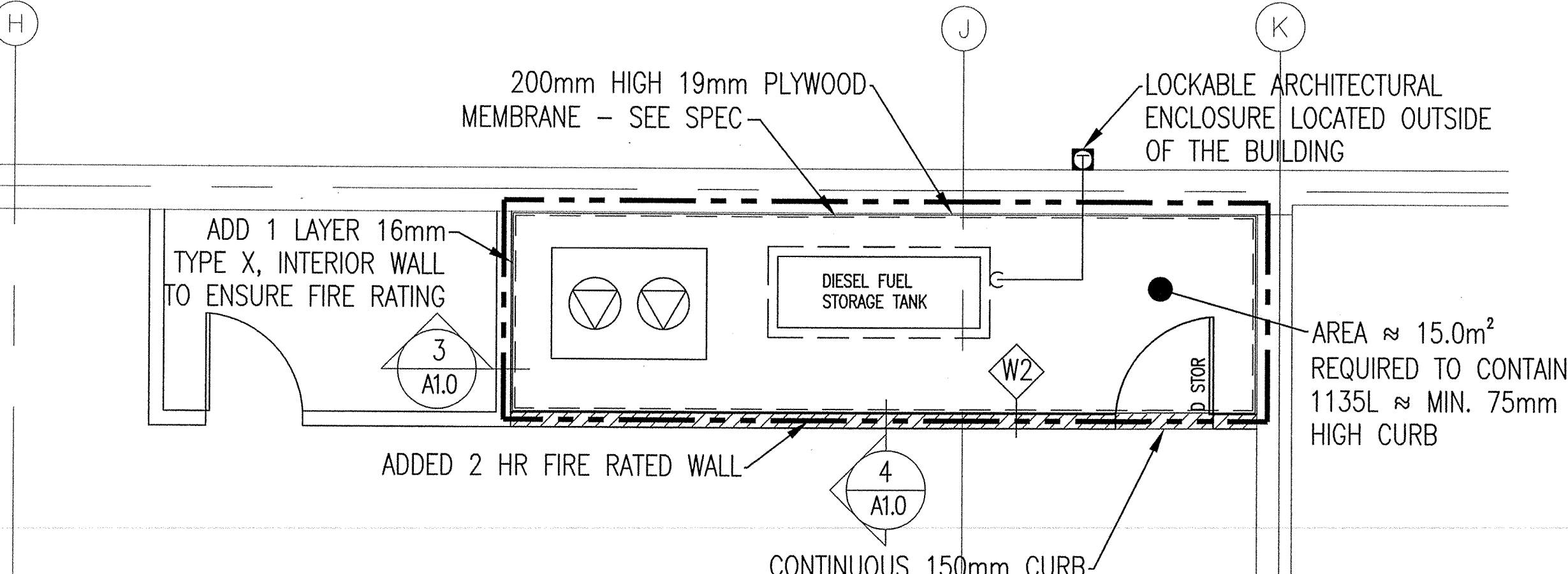


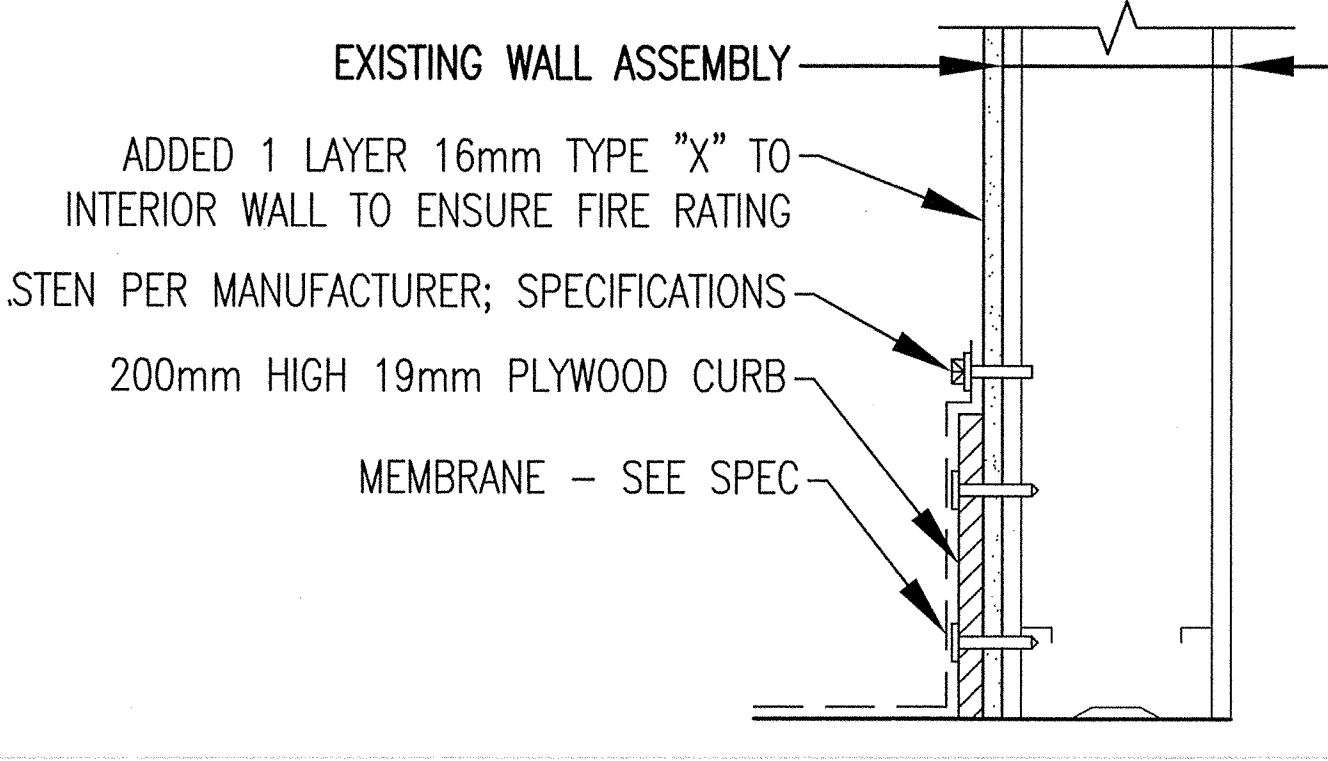
PROJECT No: 07-232-01 ADDRESS: 510 MAIN ST. DESCRIPTION: SUB-BASEMENT DATE: 2008.06.11 FILE NAME: A1 - SUB-BASEMENT



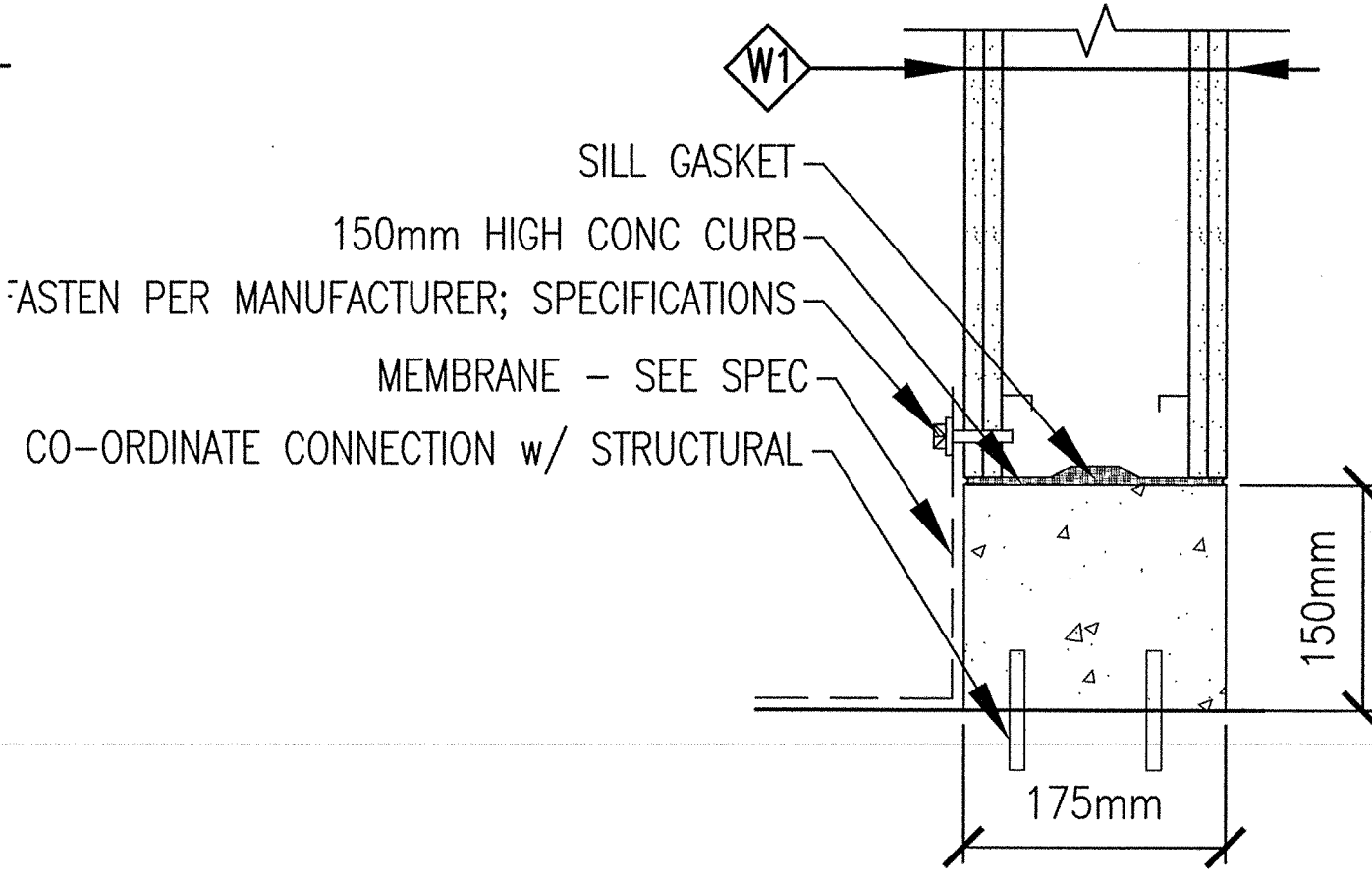
1 SUB-BASEMENT FLOOR PLAN
SCALE: 1:150



2 SUB-BASEMENT PARTIAL FLOOR PLAN - FUEL STORAGE ROOM
SCALE: 1:50



3 EXISTING WALL SECTION DETAIL
SCALE: 1:5



4 NEW WALL SECTION DETAIL
SCALE: 1:5

- NOTES:
- W1 2 HR WALL ASSEMBLY
2 LAYERS 16mm TYPE 'X' GYP
150mm STEEL STUD @ 450 o/c
2 LAYERS 16mm TYPE 'X' GYP
 - W2 2 HR WALL ASSEMBLY
SAME AS W1 - MOUNTED ON
A 150mm CONCRETE CURB
- DOOR SCHEDULE - SEE A3.0
- D STOR (1-1/2 HR FR DOOR, FRAME AND HARDWARE)
 - D 76W (1-1/2 HR FR DOOR, FRAME AND HARDWARE)

numberTEN architectural group
winnipeg MB victoria BC
204 942.0981 250 360.2106
architecture • interior design • graphic design

1 ISSUED FOR BID OPPORTUNITY 09.06.25
NO. REVISION/DESCRIPTION BY DATE

SEALS

PROVINCE OF MANITOBA
BARRIE OTTENBREIT
REGISTERED ARCHITECT

PROVINCE OF MANITOBA
NUMBER TEN ARCHITECTURAL GROUP
No. 010
REGISTERED ARCHITECT

DRAWN BY: DM CHECKED BY: GB APPROVED BY: 80
DATE: 2008.06.11 USER APPROVAL

Winnipeg
CITY OF WINNIPEG
PLANNING, PROPERTY &
DEVELOPMENT DEPARTMENT
CIVIC ACCOMMODATIONS DIVISION
300 - 65 GARRY ST. R3C 4K4

PROJECT
CITY OF WINNIPEG 510 MAIN ST.
EMERGENCY DISTRIBUTION UPGRADE
PHASE 1
510 MAIN STREET

SHEET TITLE
SUB-BASEMENT
FLOOR PLAN

SCALE AS SHOWN PROJECT NO. 07-232-01 SHEET NO. A1.0
DRAWING SHEET SIZE: A1 (841mm x 594mm) PLOT 1:1