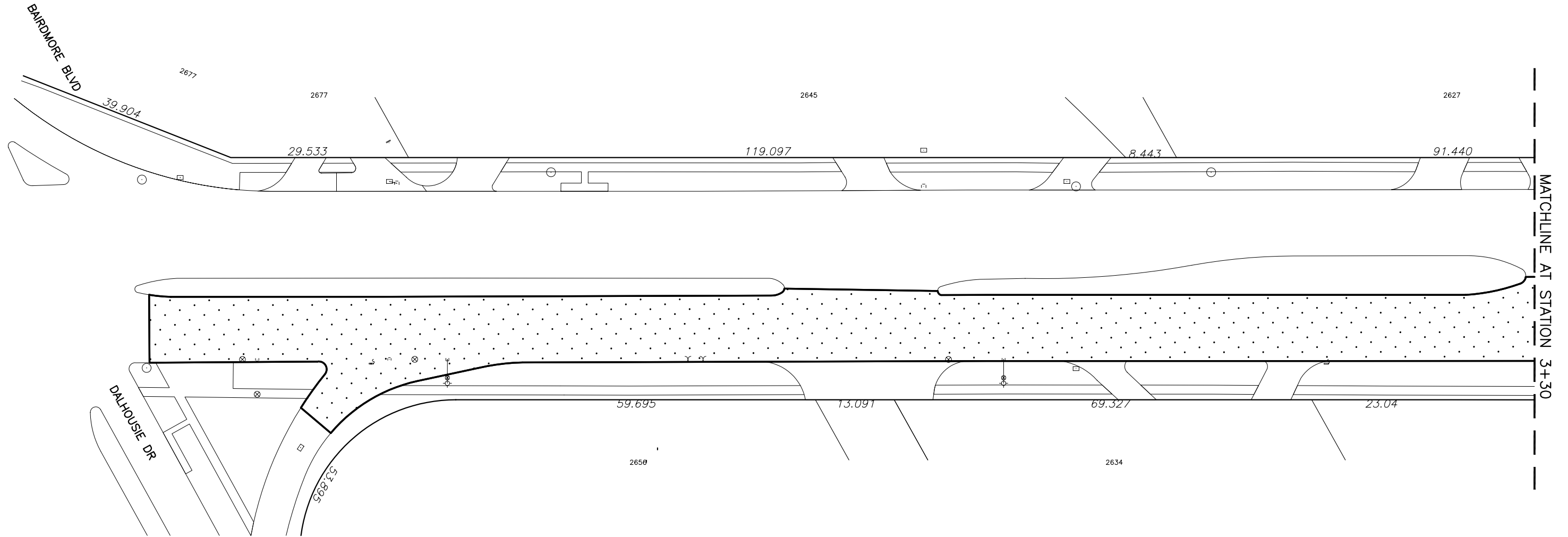
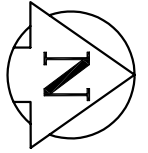




# PEMBINA HIGHWAY (NORTHBOUND)



## EXTENT OF WORK

- MILL EXISTING ASPHALT
- CURB RENEWALS AS DIRECTED
- JOINT AND SLAB RENEWALS AS DIRECTED
- ASPHALT OVERLAY

- ASPHALT OVERLAY

 200 TACHE AVENUE WINNIPEG, MANITOBA R2H 1A7 PH: (204)-233-2113 FAX: (204)-233-2080		 THE CITY OF WINNIPEG PUBLIC WORKS DEPARTMENT TRANSPORTATION DIVISION	
DESIGNED BY R.H./S.M.	CHECKED BY S.M.	PROVINCE OF MANITOBA/CITY OF WINNIPEG	CITY DRAWING NO.
DRAWN BY R.H.	APPROVED BY S.M.	2008 MINOR ASPHALT REHABILITATION	CONSULTANT DRAWING NO. 063-051-06
HOR. SCALE: N.T.S. VERT. SCALE: N.T.S.	RELEASED FOR CONSTRUCTION DATE	PEMBINA HIGHWAY (NORTHBOUND) FROM DALHOUSIE DR. TO STA. 3+30	99-2008-06
DATE JANUARY 2008	DATE		