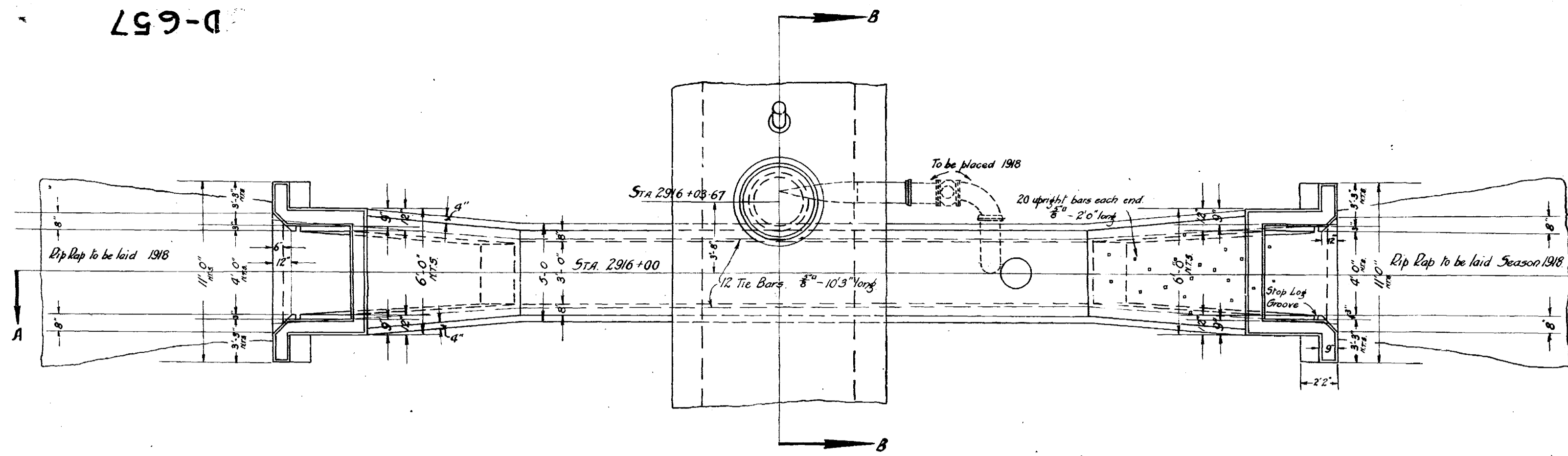
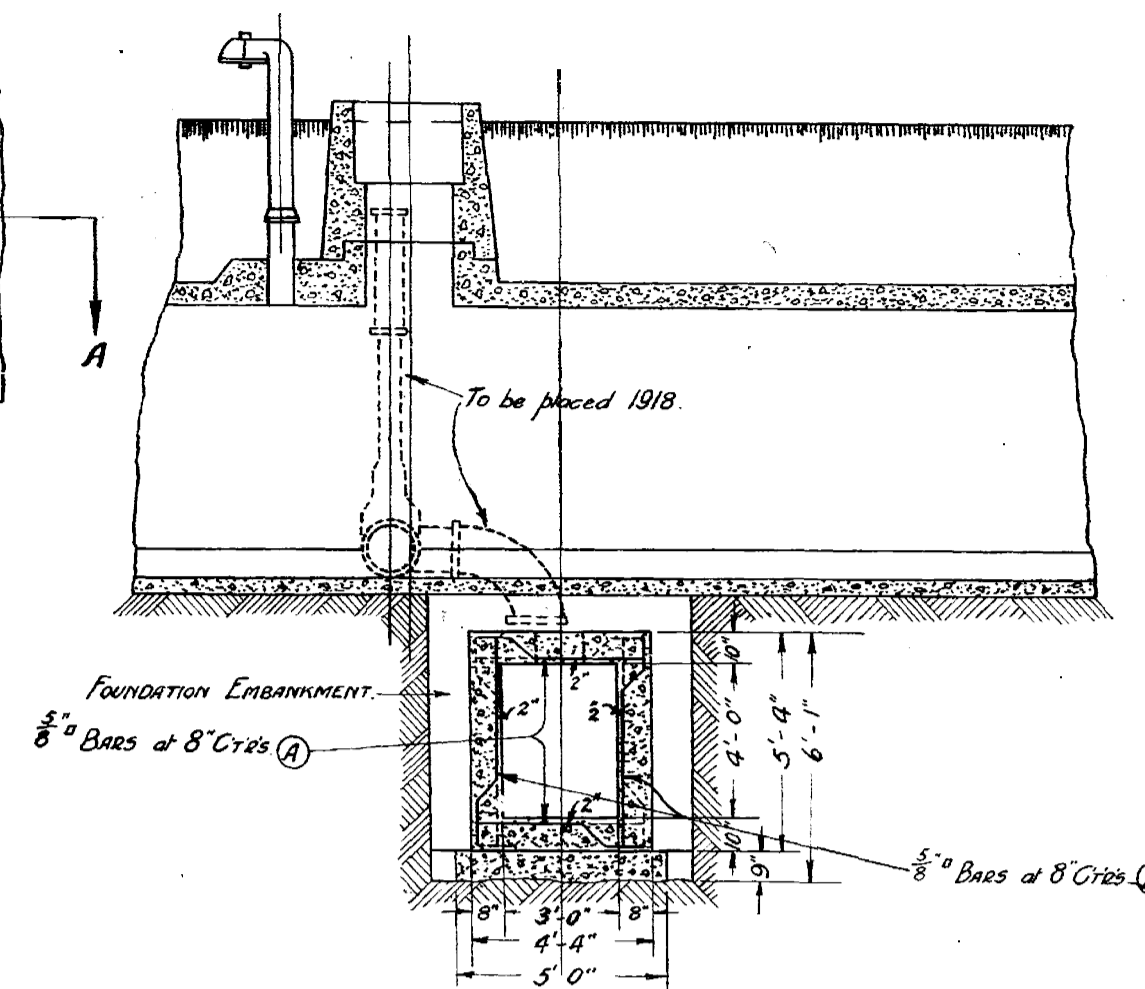
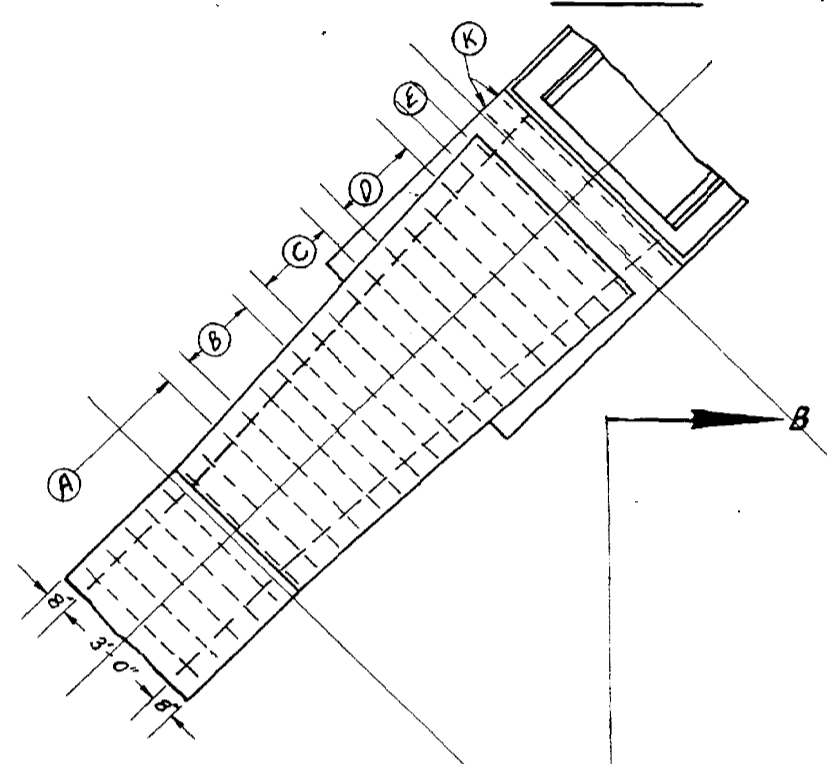


AUTOCAD RELEASE 14.0

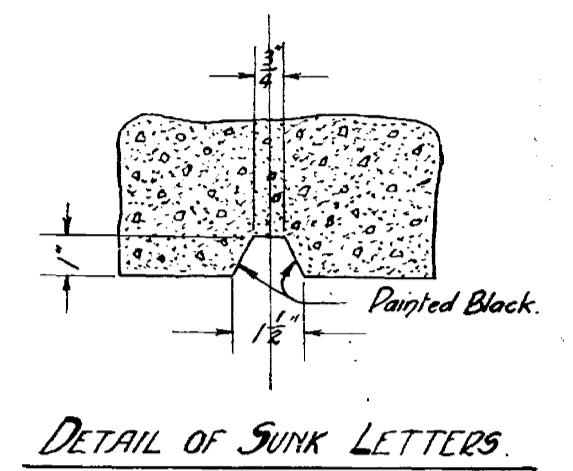
D-657



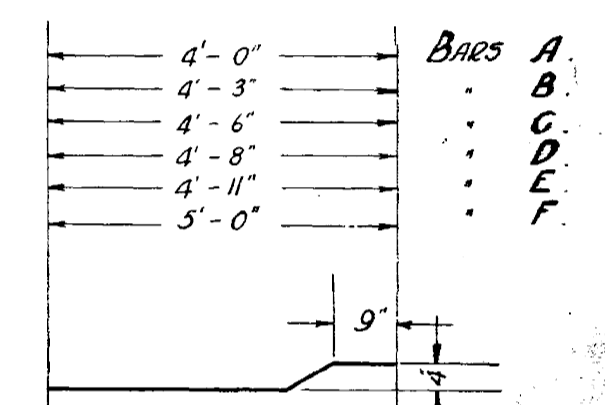
PLAN.



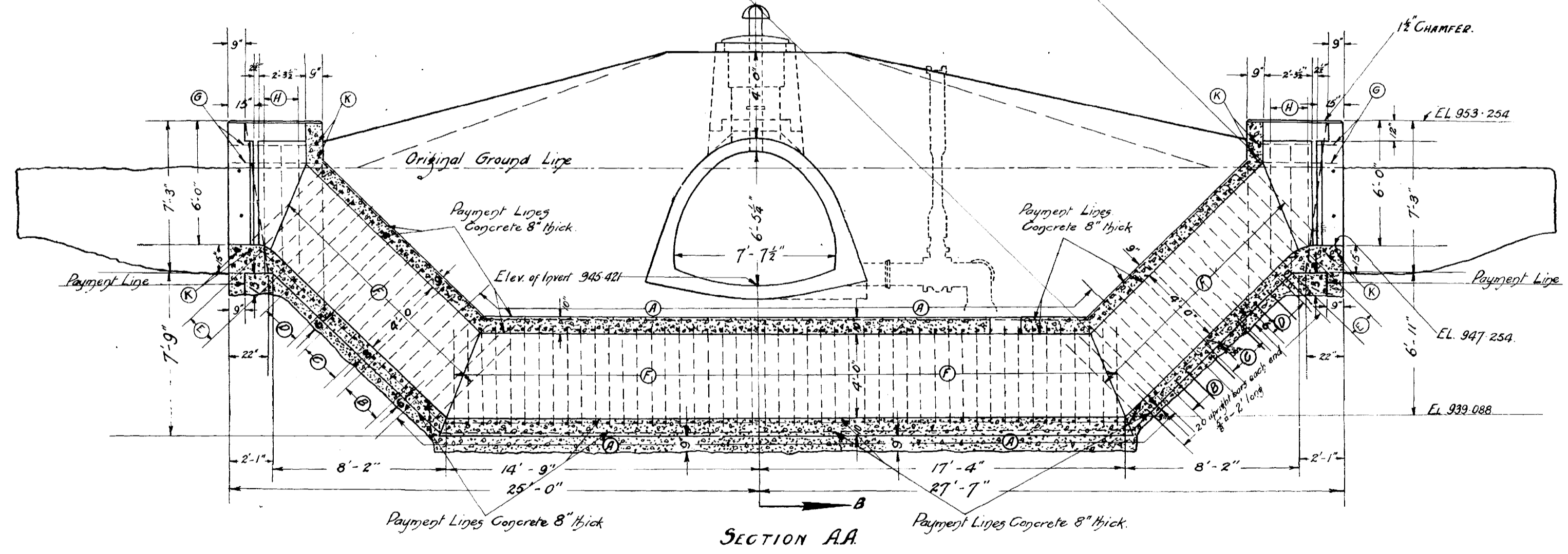
SECTION B.B.



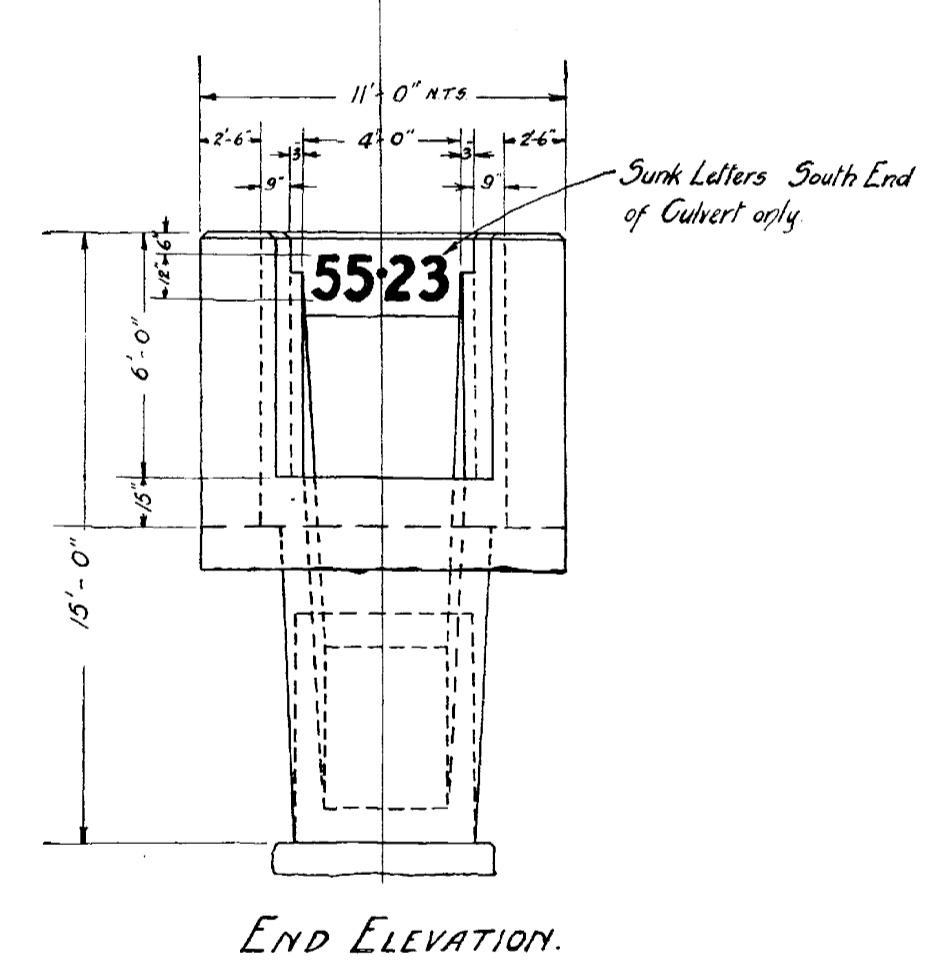
DETAIL OF SUNK LETTERS.



DETAIL OF BENT BARS.



SECTION AA



END ELEVATION.

CONCRETE: 31.66 Cu Yds Including Lip.
STEEL: 2564.2 Lbs. Including 270 lbs not allowed for Estimate.

Note: Excess Concrete not allowed for Estimate.

BILL OF MATERIAL.

Letter	No	Size	Length	Description
A	100	3/8"	3'-2"	BENT
B	16	"	4'-5"	"
C	16	"	4'-8"	"
D	16	"	4'-10"	"
E	10	"	5'-1"	"
F	172	"	5'-2"	"
G	8	"	4'-2"	STRAIGHT
H	12	"	5'-10"	"
K	8	"	5'-8"	"

Note: 12 bars 8'-10 3/8" long. Not allowed for Estimate.
40 - 8'-2" 0"

Drawn by: *H. G. J.*
Traced: "
Checked: "

W. P. Richman
Division Engineer
W. Schaefer
Chief Engineer.

see D395 SEE D395

D-657

GREATER WINNIPEG WATER DISTRICT.
CULVERT AS CONSTRUCTED STA. 2916+00.
November 17th 1917. Scale: 1/4" = 1'-0"

NOT TO SCALE

Tender No. 926-2008

B.M. — —	ELEV. — —	<p style="text-align: center;">AECOM</p> <p style="font-size: small;">© 2008 LMA ENGINEERING LTD. ALL RIGHTS RESERVED. THIS DOCUMENT IS PROTECTED BY COPYRIGHT LAW AND MAY NOT BE USED, REPRODUCED OR MODIFIED IN ANY MANNER OR FOR ANY PURPOSE EXCEPT WITH THE WRITTEN PERMISSION OF LMA ENGINEERING LTD. DONE BUSINESS AS AECOM (PACIFIC) OR A PARTY TO WHICH ITS COPYRIGHT HAS BEEN ASSIGNED. AECOM ACCEPTS NO RESPONSIBILITY, AND DENIES ANY LIABILITY WHATSOEVER, TO ANY PARTY THAT USES, REPRODUCES, MODIFIES, OR RELIES ON THIS DOCUMENT WITHOUT AECOM'S EXPRESS WRITTEN CONSENT.</p>	<p style="text-align: center;">ENGINEER'S SEAL</p>
DESIGNED BY	CHECKED BY		
DRAWN BY	APPROVED BY		
HOR. SCALE:	RELEASED FOR CONSTRUCTION		
VERTICAL:	DATE	CONSULTANT DRAWING NO.	D265-241-00
NO. REVISIONS	DATE	BY	

THE CITY OF WINNIPEG
Winnipeg WATER AND WASTE DEPARTMENT

SHOAL LAKE AQUEDUCT
DRAINAGE SIPHON REPAIRS
MILES 50.31, 53.75 & 55.23
HISTORIC DRAWING
(FOR INFORMATION PURPOSES ONLY)

SHEET OF
CITY DRAWING NUMBER
D-657
REV