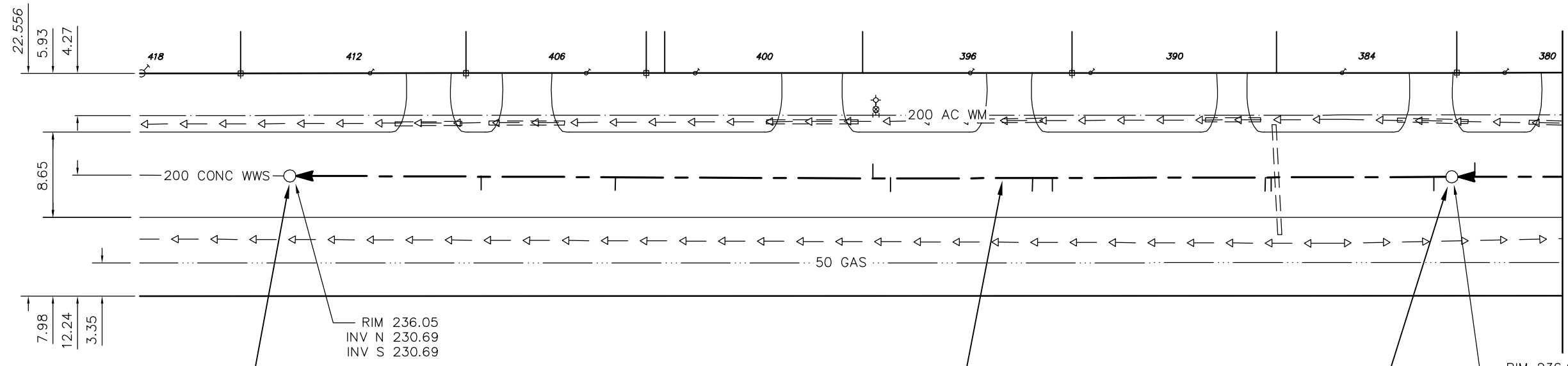
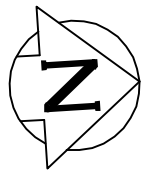


117.7 FULLY DETERIORATED
OVALITY = 5.0%

CHALFONT ROAD



FOR CONTINUATION
SEE DWG. 8768

MH ID S-MH60002175
MH OPENING - 521Ø
MH RISERS - 750Ø
MH BASE - 1200Ø

RIM 236.05
INV N 230.69
INV S 230.69

117.7 OF 200 CONC WWS TO BE LINED
SEWER ID S-MA60002976

MH ID S-MH60002176
MH OPENING - 521Ø
MH RISERS - 750Ø
MH BASE - 1200Ø

RIM 236.01
INV N 231.12
INV S 231.14

SEWER JUNCTION INFORMATION FROM SEWER VIDEO INSPECTION S-MA60002976				
DISTANCE FROM MH S-MH60002176				
1.8	S	150Ø	WEST	CN
18.3	S	150Ø	WEST	CXI
18.9	S	150Ø	WEST	CN
40.5	S	150Ø	WEST	CXI
42.5	S	150Ø	WEST	CN
56.9	S	150Ø	WEST	CXI
58.7	S	150Ø	TOP	CN
84.8	S	150Ø	WEST	CN
98.4	S	150Ø	WEST	CN

ENGINEER'S SEAL

ORIGINAL
SIGNED BY
S.R.J.
COURNOYER
09/01/08

BID OPPORTUNITY: 924-2008
FILENAME : 8767.dwg
PLOT DATE : 2009 01 08

METRIC
WHOLE NUMBERS INDICATE MILLIMETRES
DECIMALIZED NUMBERS INDICATE METRES

B.M. ELEV.	FIELD BOOK #:	CITY OF WINNIPEG WATER AND WASTE ENGINEERING DIVISION		THE CITY OF WINNIPEG WATER AND WASTE DEPARTMENT	
POSTED TO LIS		DESIGNED BY: SC	CHECKED BY: SC	2009 SEWER RENEWALS BY CIPP LININGS CHALFONT ROAD	
		DRAWN BY: WKT/CJH	APPROVED BY: KZ	4TH MH S OF STOCKDALE STREET TO 5TH MH S OF STOCKDALE STREET	
		HOR. SCALE 1:500 VERTICAL	RELEASED FOR CONSTRUCTION	SHEET 6 OF 34 CITY DRAWING NUMBER 8767	
NO.	REVISIONS	DATE	BY	DATE	2009 01 08