

LEGEND

UWRL	UNREGULATED WINTER RIVER LEVEL
RSRL	REGULATED SUMMER RIVER LEVEL
231	GEODETIC CONTOUR (m)
---	PROPERTY BOUNDARY
(---)	TREE/BUSH LINE
SI-5	SLOPE INCLINOMETER (KGS GROUP, 2004)
PN-5	PNEUMATIC PIEZOMETER (KGS GROUP, 2004)
SP-3	STANDPIPE PIEZOMETER (KGS GROUP, 2004)
(X)	TREES TO BE REMOVED
(O)	TREES TO BE PROTECTED
---	SAFETY FENCE
---	SILT FENCE

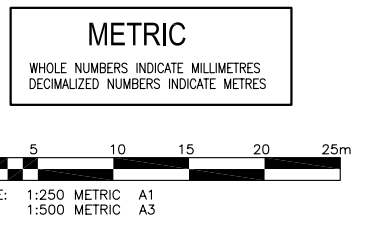
- NOTES:**
- THESE DRAWINGS TO BE READ IN CONJUNCTION WITH TENDER PACKAGE "RUE DESPINS AND AVENUE DE LA CATHEDRALE OUTFALL PIPE REPLACEMENT AND RIVER BANK STABILITY IMPROVEMENT WORKS".
 - SITE PLAN BASED ON 1998 DIGITAL ORTHOGRAPHIC MAPPING AND 2004/2005 KGS GROUP TOPOGRAPHICAL SURVEY AND RIVER BOTTOM SOUNDINGS FROM OCT. 2005.
 - SURVEY CONTROL WILL BE PROVIDED BY THE CONTRACT ADMINISTRATOR. THE CONTRACTOR SHALL BE RESPONSIBLE FOR THE LAYOUT OF THE WORK AND ANY ONGOING SURVEY DURING CONSTRUCTION.
 - ANTICIPATED ICE LEVEL AT THE SITE WILL BE ELEV. 222.0m ±.
 - WITHIN LIMITS OF BANK WORKS, PROVIDE ACCESS POINT AT TACHE AVENUE.
 - RIPRAP TOP ELEVATION AT 225.5m. CARE SHALL BE TAKEN WHEN PLACING RIPRAP ALONG SHORELINE TO AVOID DAMAGE TO EXISTING TREES LOCATED ALONG TOP OF BANK.
 - BLEND EXISTING AND NEW RIPRAP WITH EXISTING BANK GEOMETRY TO PROVIDE A SMOOTH UNIFORM GRADE.
 - NO TREES SHALL BE REMOVED WITHOUT PRIOR APPROVAL OF THE CONTRACT ADMINISTRATOR.
 - LOCATION OF NEW TREES SHALL BE IN THE MID BANK AREA AND AS DIRECTED IN THE FIELD BY THE CONTRACT ADMINISTRATOR.
 - REGRADE AREA TO PROVIDE POSITIVE DRAINAGE AS DIRECTED BY THE CONTRACT ADMINISTRATOR.
 - FINAL EXTENTS OF EXCAVATED ROCKFILL COLUMNS TO BE DETERMINED BY CONTRACT ADMINISTRATOR.
 - LOCATIONS OF EXISTING TENSION CRACKS ARE APPROXIMATE AND WILL BE VERIFIED IN THE FIELD BY THE CONTRACT ADMINISTRATOR.
 - EXISTING RIPRAP EXTENTS ARE APPROXIMATE. RIPRAP EXTENSE AND THICKNESS WILL BE VERIFIED IN THE FIELD BY THE CONTRACT ADMINISTRATOR.

WARNING

- NOTIFY THE GAS COMPANY OF THE PROPOSED LOCATION OF EXCAVATION.
- TAKE PRECAUTION TO AVOID DAMAGE TO GAS COMPANY INSTALLATIONS.
- SEE PROVINCIAL REGULATION 210/72 FOR DETAILS.

PROPERTY LIMITS DELINEATION

DELINEATION OF PROPERTY LIMITS AS SHOWN ON THIS DWG DOES NOT REPRESENT A "LEGAL SURVEY". KGS GROUP MAKES NO REPRESENTATION OR WARRANTY AS TO THE ACCURACY OF PROPERTY LIMITS DELINEATED ON THIS DWG, NOR ON THE DIMENSIONAL ACCURACY OF DWG FEATURES RELATIVE TO THOSE PROPERTY LIMITS.



150 WM	WATERMAIN	150 WM	HYDRO		
HYDRANT	HYDRANT	M.T.S.			
VALVE	VALVE	PROPERTY LINE			
300 LBS LAND DRAINAGE SEWER	300 LBS LAND DRAINAGE SEWER	SURVEY BAR			
250 WWS WASTE WATER SEWER	250 WWS WASTE WATER SEWER	LIGHT STANDARD			
MANHOLE	MANHOLE	HYDRO POLE			
CATCH BASIN	CATCH BASIN	GUY WIRE			
CURB INLET	CURB INLET	SIGN			
JUNCTIONS	JUNCTIONS	BUSH/TREE LINE			
CULVERT	CULVERT	FENCE			
GAS	GAS	ELEVATION	231.334	32.231	
EXISTING	LEGEND-PLAN	PROPOSED	EXISTING	LEGEND-PROFILE	PROPOSED

LOCATION APPROVED UNDERGROUND STRUCTURES

B.M. 34-013
ELEV. 230.472m

365 (04390) - E. SIDE TACHE AVE. N. OF RUE DESPINS, 100m N. OF TACHE AVE. 38.1m N. OF RUE DESPINS & 0.6m N. OF E. OF TACHE AVE. 015mm LB. ON N. SIDE OF PILE TO LOCATE SAME.

SUPV. U/G STRUCTURES COMMITTEE DATE

NOTE:
LOCATION OF UNDERGROUND STRUCTURES AS SHOWN ARE BASED ON THE BEST INFORMATION AVAILABLE BUT NO GUARANTEE IS GIVEN THAT ALL EXISTING UTILITIES ARE SHOWN OR THAT THE GIVEN LOCATIONS ARE EXACT. CONFIRMATION OF EXISTENCE AND EXACT LOCATION OF ALL SERVICES MUST BE OBTAINED FROM THE INDIVIDUAL UTILITIES BEFORE PROCEEDING WITH CONSTRUCTION.

NO.	ISSUED FOR TENDER	16/12/08	BY	
NO.	REVISIONS	DATE	BY	

KGS GROUP
CONSULTING ENGINEERS & PROJECT MANAGERS
WINNIPEG (204) 896-1209
THUNDER BAY (807) 345-2233

DESIGNED BY: CWC/RD
CHECKED BY: CWC

DRAWN BY: EC/ESM/PD
APPROVED BY:

HOR. SCALE: 1:250
VERTICAL:

RELEASED FOR CONSTRUCTION: DATE

DATE: 08/12/08

ENGINEER'S SEAL

ORIGINAL SIGNED BY
16/12/08

CONSULTANT DRAWING NO.
08-0107-12_05

THE CITY OF WINNIPEG
WATER & WASTE DEPARTMENT

2008 OUTFALL REPAIRS
RUE DESPINS

RIVERBANK WORKS

SHEET 05 OF 09
CAD FILE DRAWING NUMBER
RR_54-55 RIVERBANK WORKS
CITY DRAWING NUMBER
LD-5242

P:\Projects\2008\08-0107-12\Drawings\RR_54-55 RIVERBANK WORKS.dwg