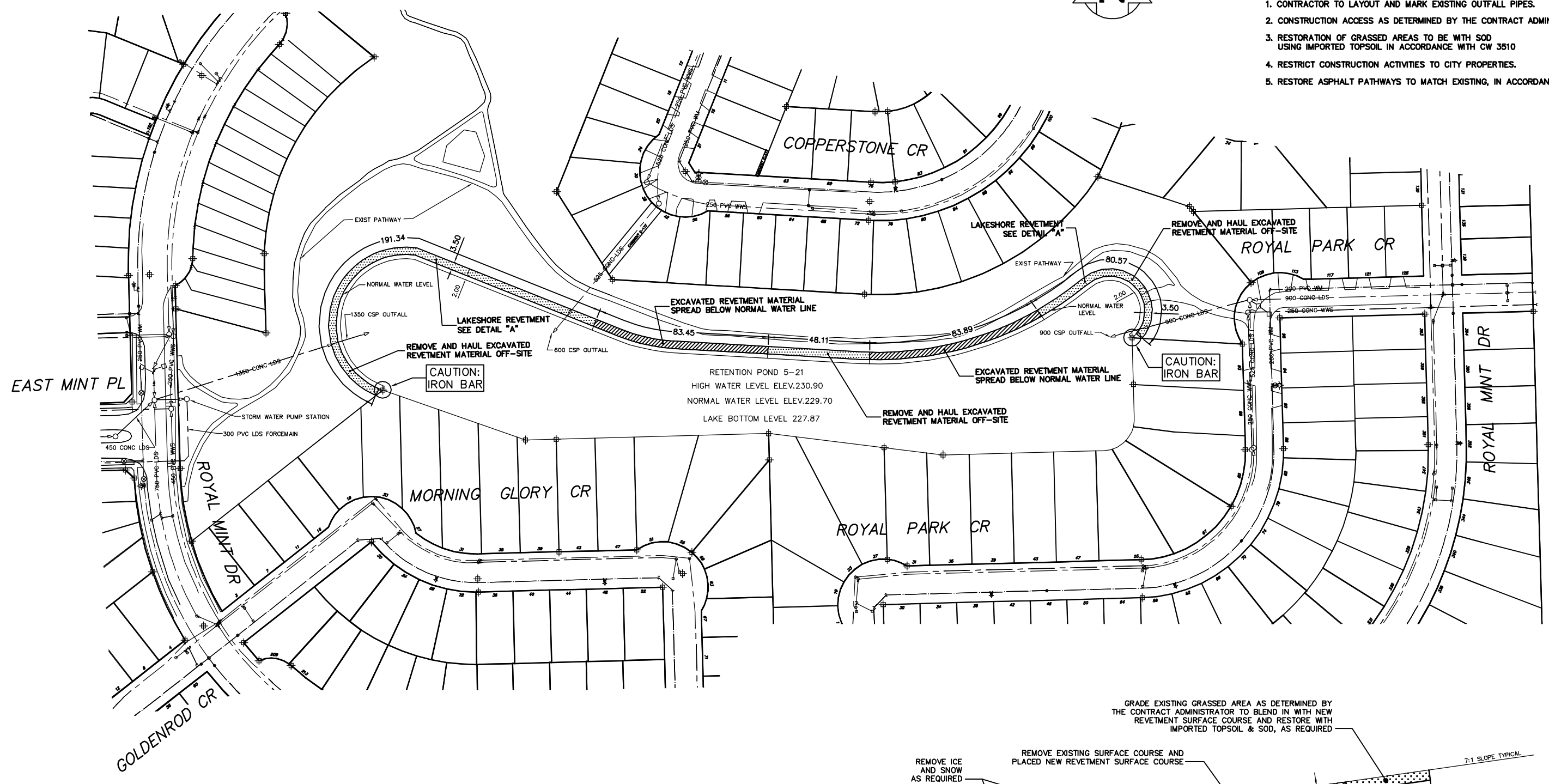
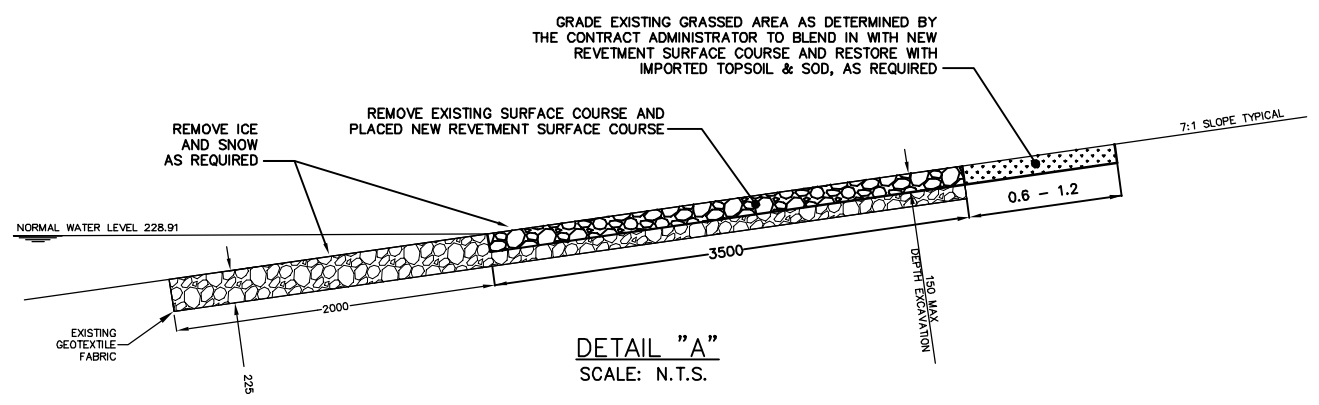




- NOTES :**
1. CONTRACTOR TO LAYOUT AND MARK EXISTING OUTFALL PIPES.
 2. CONSTRUCTION ACCESS AS DETERMINED BY THE CONTRACT ADMINISTRATOR.
 3. RESTORATION OF GRASSED AREAS TO BE WITH SOD USING IMPORTED TOPSOIL IN ACCORDANCE WITH CW 3510
 4. RESTRICT CONSTRUCTION ACTIVITIES TO CITY PROPERTIES.
 5. RESTORE ASPHALT PATHWAYS TO MATCH EXISTING, IN ACCORDANCE WITH CW 3410



- LEGEND**
- REMOVE AND HAUL OFF-SITE EXCAVATED REVETMENT COURSE MATERIAL
 - SPREAD EXCAVATED REVETMENT MATERIAL BELOW NORMAL WATER LINE



GRADE EXISTING GRASSED AREA AS DETERMINED BY THE CONTRACT ADMINISTRATOR TO BLEND IN WITH NEW REVETMENT SURFACE COURSE AND RESTORE WITH IMPORTED TOPSOIL & SOD, AS REQUIRED

METRIC
WHOLE NUMBERS INDICATE MILLIMETRES
DECIMALIZED NUMBERS INDICATE METRES

B.M. ELEV. POSTED TO LBS	FIELD BOOK #	CITY OF WINNIPEG WATER AND WASTE ENGINEERING DIVISION	ENGINEER'S SEAL ORIGINAL MYLAR SIGNED BY K.R. ZUREK 08/11/27	THE CITY OF WINNIPEG WATER AND WASTE DEPARTMENT Winnipeg 2008 STORMWATER RETENTION BASIN REVETMENT REPLACEMENT LAKE 5-21	SHEET 3 OF 4 CITY DRAWING NUMBER LD-5233
DESIGNED BY DEB CHECKED BY KZ		DRAWN BY WKT/CJH APPROVED BY KZ		HOR. SCALE 1:1000 RELEASED FOR CONSTRUCTION	
NO. REVISIONS DATE BY		DATE 2008 11 27 DATE		BID OPPORTUNITY: 881-2008 FILENAME: LD-5233.dwg PLOT DATE: 2008 11 27	