

D S *W. Kelly* 23/74

LIMIT OF CONTRACT STA. 0+00

LEGEND

WATERWORKS, WASTE AND DISPOSAL: UNDERGROUND UTILITIES

PROPOSED FORCEMAIN, INTERCEPTOR OR SECONDARY SEWER _____

EXISTING FORCEMAIN, INTERCEPTOR OR SECONDARY SEWER _____ W.W.D. 24\"/>

PROPOSED FEEDERMAIN _____

EXISTING FEEDERMAIN _____ W.W.D. 24\"/>

W.W.D. _____ WATERWORKS, WASTE AND DISPOSAL

OTHER UNDERGROUND UTILITIES

COMMUNITY SEWER _____

COMMUNITY WATERMAIN _____

GAS _____

HYDRO DUCT _____

M.T.S. DUCT OR CABLE _____

STREET LIGHTING, RAILWAY SIGNAL OR TRAFFIC SIGNAL CABLE _____

SURFACE UTILITIES

COMMUNITY BOUNDARY LINE _____

FENCE LINE _____

POLE LINE _____

RAILWAY LINE _____

MISCELLANEOUS SYMBOLS

CATCH BASIN ○

CULVERT □

HYDRANT ⊕

MANHOLE ⊙

HYDRO OR M.T.S. POLE ⊕

LAMP STANDARD ⊕

RAILWAY OR TRAFFIC SIGNAL STANDARD ⊕

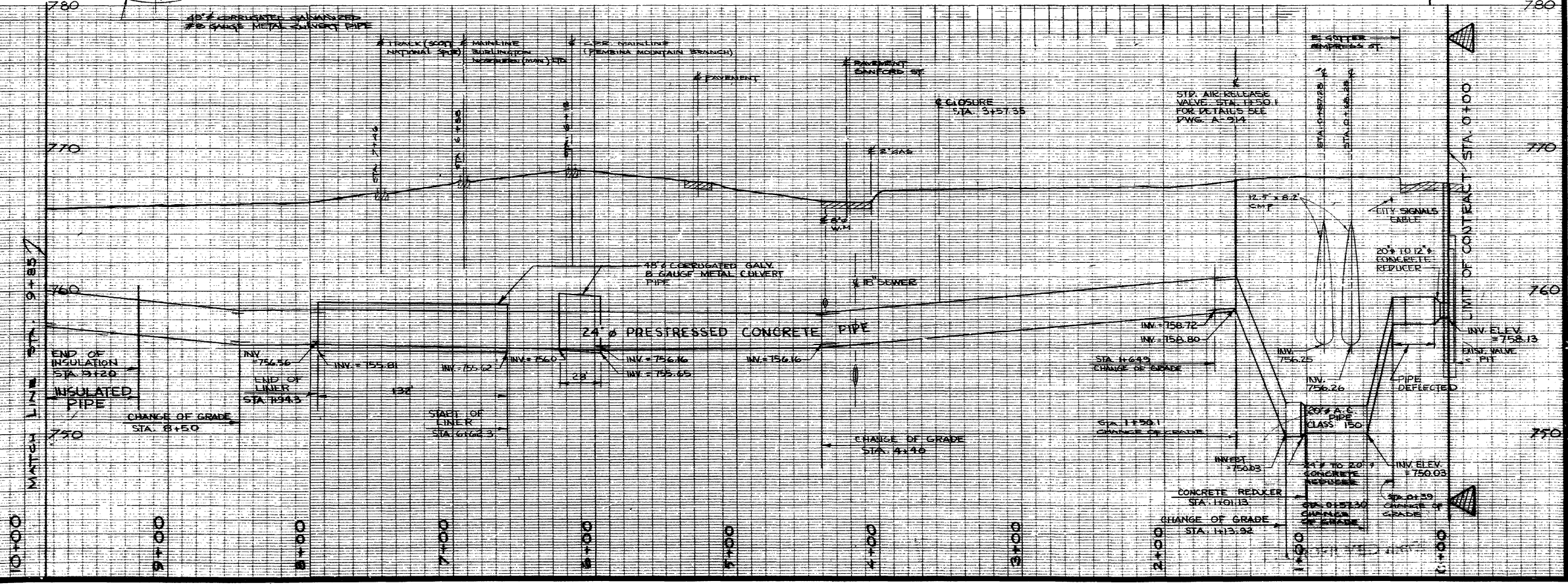
SURVEY BAR ⊕

TREE ⊕

VALVE ⊕

NOTES

FOR ALTERNATE JACKING PIT DETAILS SEE DWG. B-578



NO.	DESCRIPTION	DATE	BY
1	REVISED TO AS BUILT	NOV/76	RF

REVISIONS

FIELD BOOKS NO. F-378 SURVEYED BY D.M. GALKA

LAND SURVEY PLANS NO. DATE OCT 12/73

B.M.

The City of Winnipeg
Waterworks, Waste and Disposal Division

Branch: OPERATIONS (WATER)

SARGENT AVE. FEEDERMAIN
PLAN & PROFILE
INCESOLL ST. TO EMPRESS ST.
STA. 0+00 TO STA. 9+85

DESIGNED BY	DRAWN BY
CHECKED BY	DATE AUG. 23/74
APPROVED BY	

SCALE: HOR. 1"=40' VERT. 1"=4'

DRAWING NO. **D-1266**

MICROFILMED mar 77

REFERENCE DRAWING ONLY

40 DILLON ACAD FILE: C:\CAD\043330\Drawn\Current\REFERENCE ONLY D-1266.dwg 11/12/2008