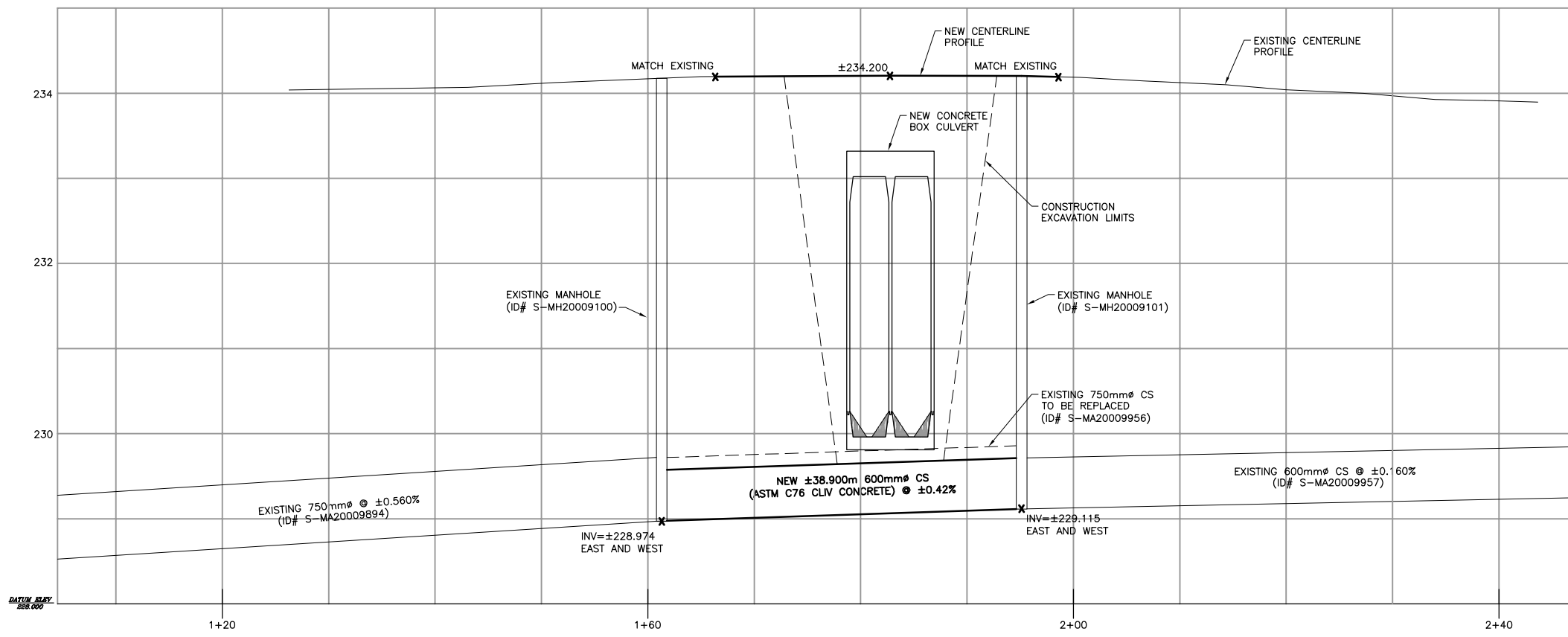


SARGENT NORTH GUTTER PROFILE OVER EXISTING 600 FEEDERMAIN



SARGENT CENTERLINE PROFILE OVER NEW 600CS CONCRETE PIPE

40 DILLON ACAD FILE: G:\CAD\043330\Drawn\Current\8\_Feedermain\_encasement.dwg 9/25/2008

**METRIC**  
WHOLE NUMBERS INDICATE MILLIMETRES  
DECIMALIZED NUMBERS INDICATE METRES

UNDERGROUND STRUCTURES		B.M. ELEV.
SUPV. U/G STRUCTURES COMMITTEE	DATE	
NOTE: LOCATION OF UNDERGROUND STRUCTURES AS SHOWN ARE BASED ON THE BEST INFORMATION AVAILABLE, BUT NO GUARANTEE IS GIVEN THAT ALL EXISTING UTILITIES ARE SHOWN OR THAT THE GIVEN LOCATIONS ARE EXACT. CONFIRMATION OF EXISTENCE AND EXACT LOCATION OF ALL SERVICES MUST BE OBTAINED FROM THE INDIVIDUAL UTILITIES BEFORE PROCEEDING WITH CONSTRUCTION.		
NO.	REVISIONS	DATE BY
2	ISSUED FOR TENDER	12/08/08 N.B.G.
1	ISSUED FOR CITY REVIEW	11/21/08 N.B.G.

DESIGNED BY	DDW/JSB
DRAWN BY	DDW
CHECKED BY	JSB
APPROVED BY	

**DILLON CONSULTING**

RELEASED FOR CONSTRUCTION  
ORIGINAL SIGNED BY B.A. NEIRINCK  
DATE DECEMBER 10, 2008

ENGINEER'S SEAL  
PROVINCE OF MANITOBA  
REGISTERED PROFESSIONAL ENGINEER  
J.S. BETKE  
DEC. 10, 2008  
Member 22412

CONSULTANT PROJECT NO.  
**04-3330-2000**

**THE CITY OF WINNIPEG**  
PUBLIC WORKS DEPARTMENT

**OMAND'S CREEK CULVERT THROUGH SARGENT AVENUE**

SEWER AND FEEDERMAIN PROFILES

CITY DRAWING NUMBER  
**C316-08-07**  
SHEET 7 OF 10

BID OPPORTUNITY  
**859-2008**