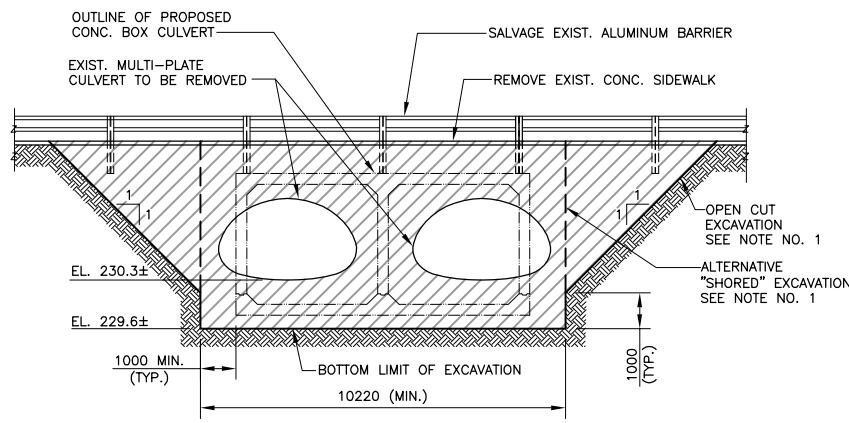


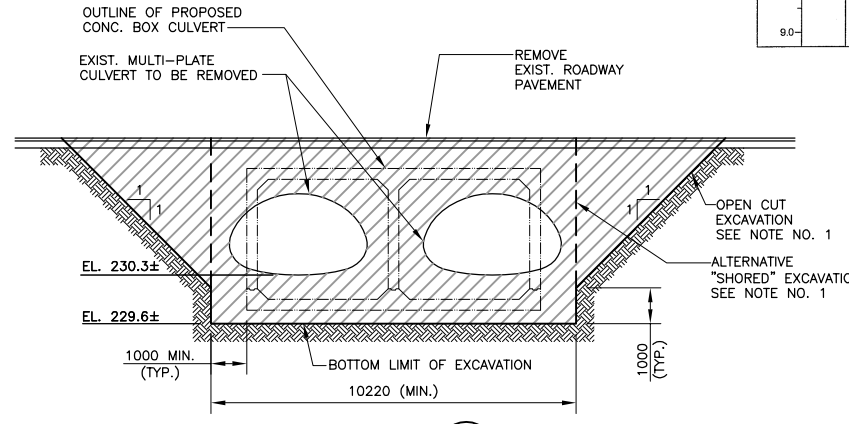
PLAN
1: 300

NOTE:

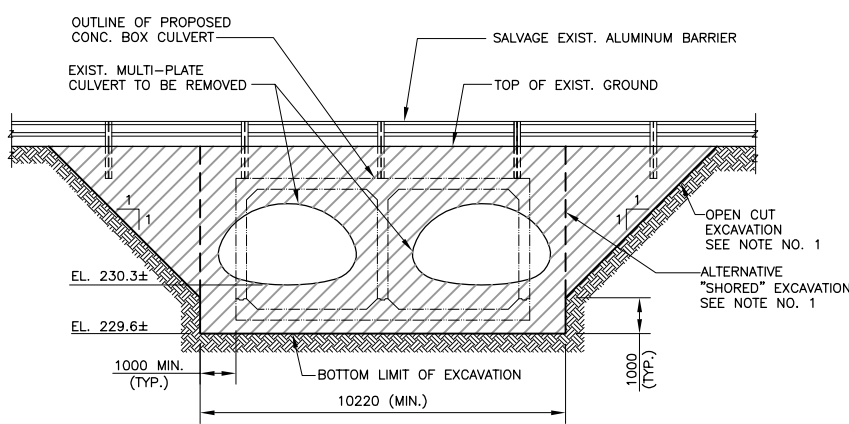
- CONTRACTOR TO EXCAVATE IN ACCORDANCE WITH THE REQUIREMENTS OF THE MANITOBA DEPARTMENT OF LABOUR AND IMMIGRATION, WORKPLACE SAFETY AND HEALTH DIVISION. SHORING MAY BE PLACED "TIGHT" AND USED AS THE OUTSIDE FORM OF THE BOX CULVERT.
- 1:1 SLOPE SHOWN FOR OPEN CUT EXCAVATION IS A MAXIMUM AND THE CONTRACTOR MAY EXCAVATE AT A SHALLOWER SLOPE TO MAINTAIN STABILITY IF REQUIRED.
- UTILITIES ARE SHOWN FROM BEST INFORMATION AVAILABLE BUT MAY NOT BE ACCURATE. CONTRACTOR TO CONTACT EACH UTILITY FOR LOCATIONS PRIOR TO EXCAVATION.



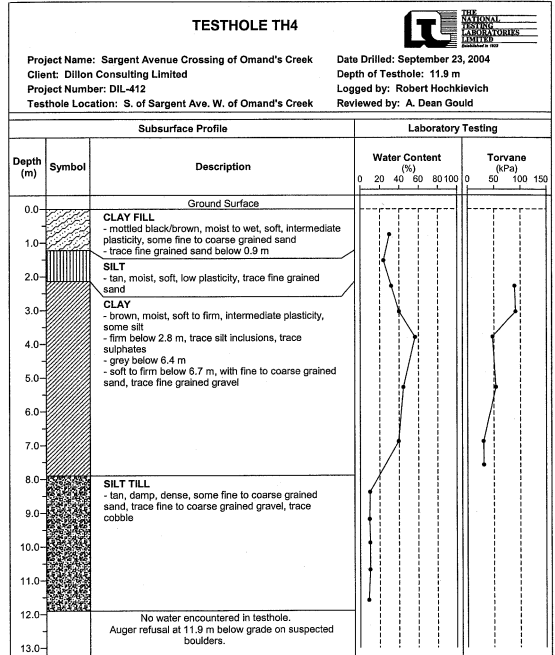
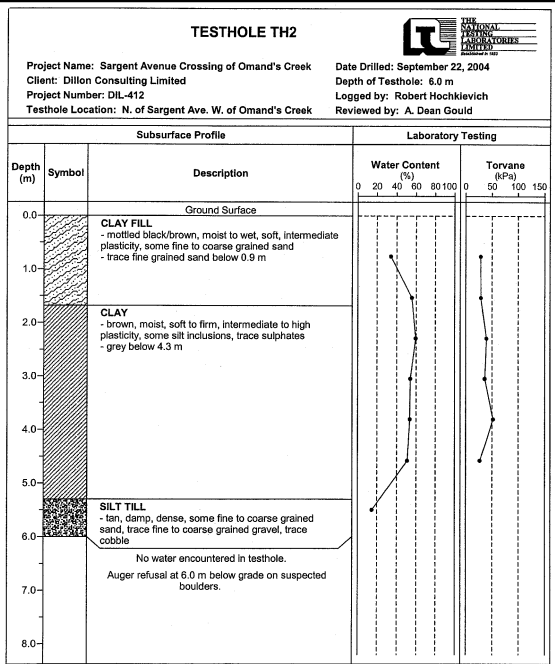
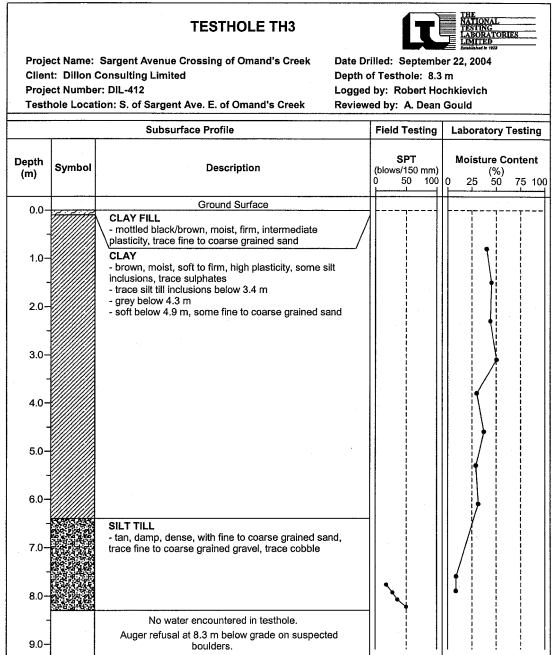
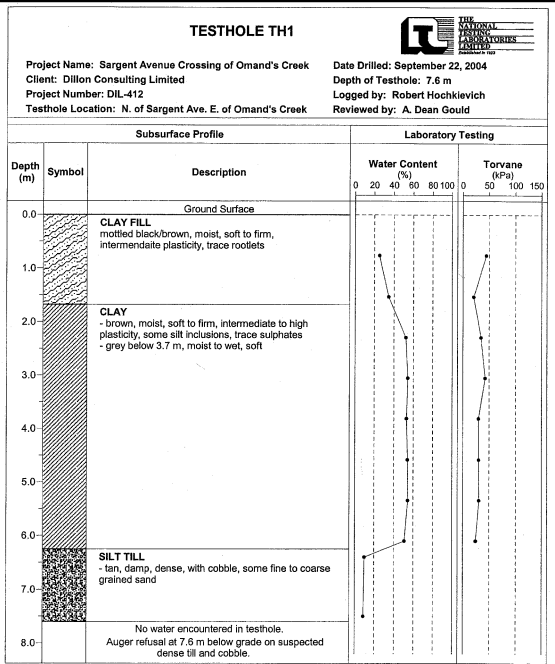
SECTION 1
1: 100



SECTION 3
1: 100



SECTION 2
1: 100



TEST HOLES

METRIC
WHOLE NUMBERS INDICATE MILLIMETRES
DECIMALIZED NUMBERS INDICATE METRES

40DILLON ACAD FILE: G:\CAD\04\3330\Drawn\Current\2-EXISTING_CULVERT.dwg 9/25/2008

| | | | | | | | | |
|--|--|---|--|--|--|--|--|---|
| UNDERGROUND STRUCTURES SUPV. U/G STRUCTURES COMMITTEE DATE: _____ | | B.M. ELEV. _____ DESIGNED BY: J.S.B. DRAWN BY: N.B.G. CHECKED BY: S.S.R. APPROVED BY: _____ | | | | | OMAND'S CREEK CULVERT THROUGH SARGENT AVENUE DEMOLITION, EXCAVATION AND TEST HOLES | CITY DRAWING NUMBER C316-08-02 SHEET 2 OF 10 |
| NOTE: LOCATION OF UNDERGROUND STRUCTURES AS SHOWN ARE BASED ON THE BEST INFORMATION AVAILABLE. BUT NO GUARANTEE IS GIVEN THAT ALL EXISTING UTILITIES ARE SHOWN OR THAT THE GIVEN LOCATIONS ARE EXACT. CONFIRMATION OF EXISTENCE AND EXACT LOCATION OF UTILITIES MUST BE OBTAINED FROM THE INDIVIDUAL UTILITIES BEFORE PROCEEDING WITH CONSTRUCTION. | | NO. REVISIONS 2 ISSUED FOR TENDER 12/08/08 N.B.G. 1 ISSUED FOR CITY REVIEW 11/21/08 N.B.G. | | | | | | |