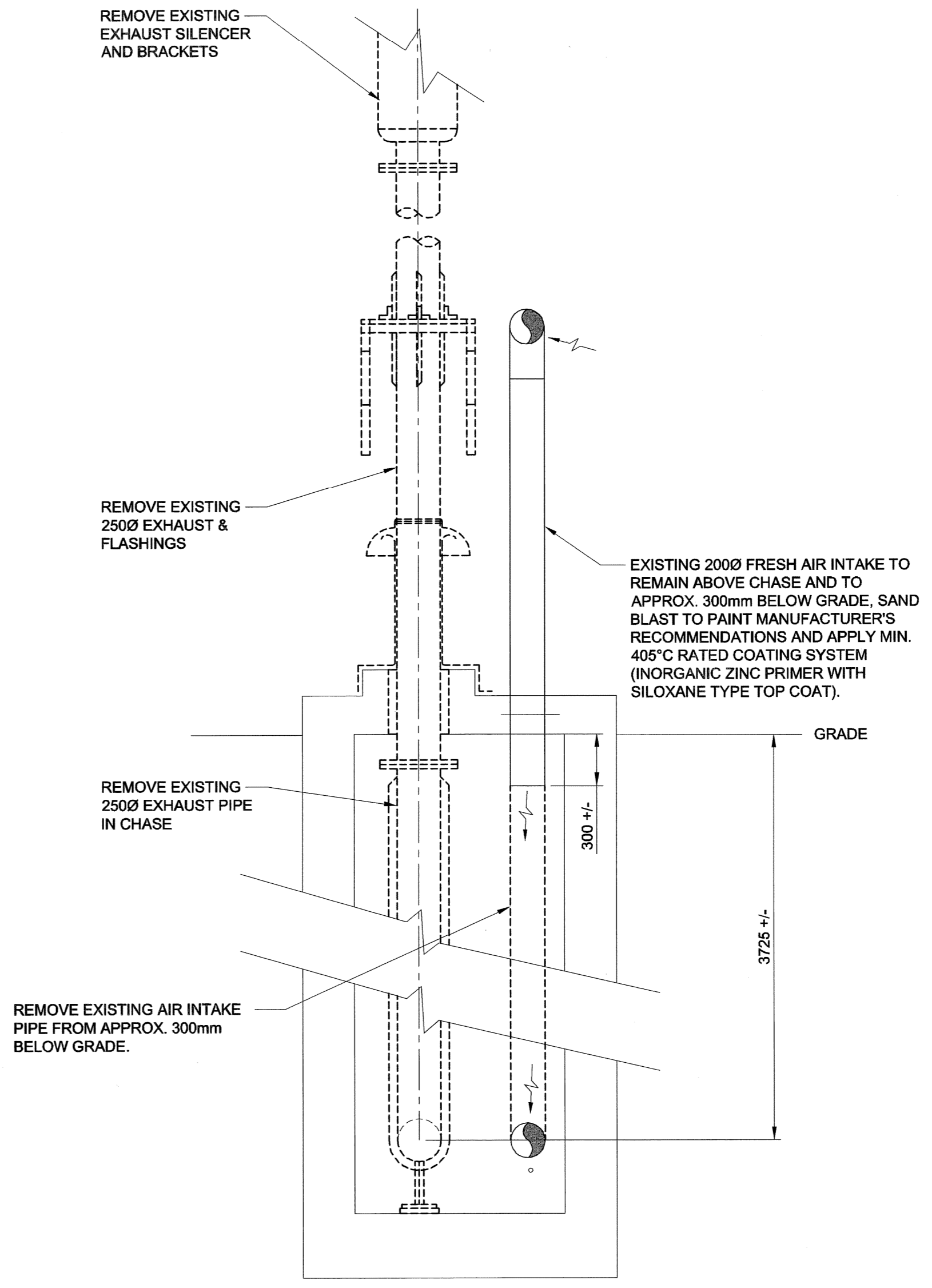


SECTION P-26 **B**
 M0002-001
 SCALE 1:50
 0 500 1000 1500 mm



SECTION C
 M0002-001
 SCALE 1:25
 0 250 500 750 mm

CAUTION: PIPE AND SLEEVE INSULATION MAY CONTAIN ASBESTOS

IMPORTANT: ASBESTOS NOTIFICATION AND ACKNOWLEDGMENT

Every effort has been made to identify known asbestos containing materials within the area of the proposed work. As a precautionary measure, where material is encountered by trades and contractors that is suspected or suspicious, the Trade/Contractor/Subcontractor is to contact the Contract Administrator who will have samples taken and tested to confirm its composition.

Mo. Reg. 53-88 (Workplace Health Hazard Regulation), Mo. Reg. 100-88R (Fibrosis and Silicosis Regulation) and associated Guidelines apply to all maintenance and renovation work that may disturb asbestos or suspect asbestos-containing materials in the Workplace. Such regulations and guidelines state that any disturbance of asbestos-containing materials may only be performed by workers or by an outside contractor who have first received the required training in asbestos-related procedures.

WORKING WITH ASBESTOS CAN BE DANGEROUS. INHALING ASBESTOS FIBERS CAN CAUSE VARIOUS TYPES OF LUNG DISEASE INCLUDING CANCER. SMOKING INCREASES THE RISK OF LUNG CANCER FROM ASBESTOS EXPOSURE.

ACKNOWLEDGMENT:

In undertaking the work of this project, we the trade or contractor agree to perform our work in such a manner so as NOT to disturb any asbestos-containing materials without:

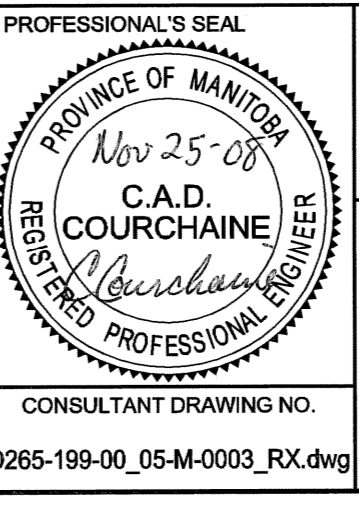
- giving notice to the appropriate supervisor, individual manager and/or project coordinator at the Water and Waste Department that known or suspected asbestos-containing material(s) will be disturbed, or
- halting work and giving notice to the Contract Administrator when unforeseen suspected asbestos-containing materials are uncovered during the provisions of service/materials.



DRN	CHK	DES	ENG	IDR
UMA REVIEW				

NO.	REVISIONS	DATE	BY
B	ISSUED FOR BID	08/11/21	RS
A	ISSUED FOR REVIEW	08/10/28	RS
		YYMMDD	

UMA AECOM	
DESIGNED BY: CC	CHECKED BY:
DRAWN BY: RS	APPROVED BY:
HOR. SCALE: AS NOTED	RELEASED FOR CONSTRUCTION:
VERT. SCALE: AS NOTED	DATE:



THE CITY OF WINNIPEG WATER AND WASTE DEPARTMENT

G. C. MACLEAN PUMPING STATION P-26 ENGINE REPLACEMENT MECHANICAL - DEMOLITION PUMP/ENGINE - SECTIONS

SHEET 1 OF 1
 CITY DRAWING NUMBER
 1-0630M-M0003-001

PROFESSIONAL'S SEAL
 CONSULTANT DRAWING NO. D265-199-00_05-M-0003_RX.dwg