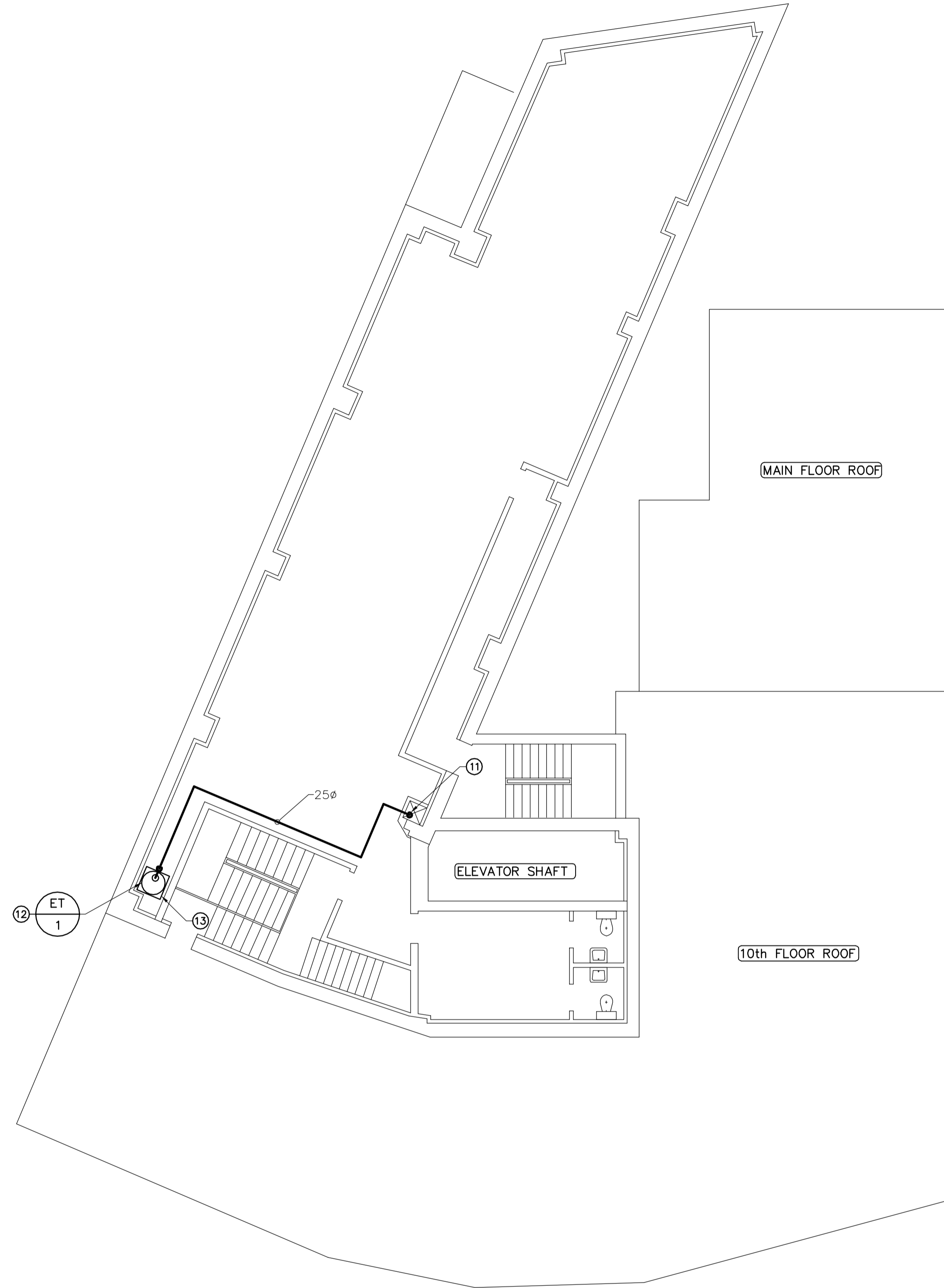


**BASEMENT - MECHANICAL PLAN**  
SCALE: 1:100



**11th FLOOR - MECHANICAL PLAN**  
SCALE: 1:100

- NOTES :
- CONSTRUCTION NOTES**
- ① RUN NEW HWS AND HWR PIPING IN BASEMENT CEILING SPACE. SIZE AS SHOWN.
  - ② EXISTING HYDRONIC SUPPLY AND RETURN LINES TO REMAIN IN CEILING SPACE.
  - ③ CAP EXISTING HYDRONIC SUPPLY AND RETURN BRANCHES PREVIOUSLY SERVING EXISTING HEAT PUMPS. CONNECT NEW HWS AND HWR BRANCHES TO EXISTING HEAT PUMP c/w NEW FLEXIBLE PIPE CONNECTIONS AND BALANCING VALVES.
  - ④ NEW HWS AND HWR BRANCHES RISING TO EXISTING HEAT PUMP LOCATED IN MAIN FLOOR CEILING SPACE. SIZE AS SHOWN.
  - ⑤ NEW HWS AND HWR BRANCHES RISING TO EXISTING HEAT PUMP (HP1-2) LOCATED IN CLOSET ON MAIN FLOOR. SIZE AS SHOWN.
  - ⑥ SEE DRAWING M05 FOR CONTINUATION.
  - ⑦ SEE DRAWING M05 FOR MECHANICAL ROOM LAYOUTS.
  - ⑧ FUTURE 40φ CONNECTION.
  - ⑨ PROVIDE NEW MAKE-UP AIR SUPPLY AIR TEMPERATURE TRANSMITTER WIRED BACK TO THE BMS.
  - ⑩ EXISTING 700φ SUPPLY AIR DUCT DOWN FROM MAKE-UP AIR UNIT.
  - ⑪ TIE INTO EXISTING HWS LINES.
  - ⑫ NEW FLOOR-MOUNTED EXPANSION TANK ET-1 c/w SHUT-OFF VALVE, PRESSURE GAUGE AND AUTOMATIC AIR VENT SET TO 345 kPa (50 PSI).
  - ⑬ PROVIDE STAINLESS STEEL SQUARE OR ROUND DRIP PAN UNDERNEATH EXPANSION TANK ET-1. PAN SHALL HAVE A MINIMUM 50mm HIGH SIDES ALL AROUND. PAN TO BE LARGER THAN DIAMETER OF TANK.
  - ⑭ EXISTING EXHAUST FAN LOCATED IN CEILING SPACE.
  - ⑮ NEW VFD (1.0 HP) MOUNTED ON WALL SERVING EXISTING EXHAUST FAN. REDUCE AIR VOLUME OF EXHAUST FAN TO 300 L/S. COORDINATE FINAL LOCATION OF VFD WITH CONTRACT ADMINISTRATOR.

- GENERAL NOTES**
1. COORDINATE WITH OTHER TRADES SO AS TO PREVENT CONFLICTS.

0	ISSUED FOR TENDER	DL	2008.11.28
NO.	REVISION/DESCRIPTION	BY	DATE



DRAWN BY	DL	CHECKED BY	PVL	APPROVED	PVL
DATE	2008.08.31	USER APPROVAL			

**Winnipeg** CITY OF WINNIPEG  
PLANNING, PROPERTY AND  
DEVELOPMENT DEPARTMENT  
CIVIC ACCOMMODATIONS DIVISION  
300 - 65 GARRY ST. R3C 4K4

PROJECT  
CONFEDERATION BUILDING  
SUPPLEMENTARY HEATING UPGRADES  
PHASE 1 - CITY BID OPP. NO. 757-2008  
457 MAIN STREET, WINNIPEG, MANITOBA



**APEGM**  
Certificate of Authorization  
Earth Tech Canada Inc.  
No. 730 Expiry: April 30, 2009

**AECOM**  
© 2008 EARTH TECH (CANADA) INC. ALL RIGHTS RESERVED.  
THIS DOCUMENT IS PROTECTED BY COPYRIGHT LAW AND MAY NOT BE USED, REPRODUCED OR MODIFIED IN ANY MANNER OR FOR ANY PURPOSE EXCEPT WITH THE WRITTEN PERMISSION OF EARTH TECH (CANADA) INC. DOING BUSINESS AS AECOM (AECOM) OR A PARTY TO WHICH ITS COPYRIGHT HAS BEEN ASSIGNED. AECOM ACCEPTS NO RESPONSIBILITY, AND DENIES ANY LIABILITY WHATSOEVER, TO ANY PARTY THAT USES, REPRODUCES, MODIFIES, OR RELIES ON THIS DOCUMENT WITHOUT AECOM'S EXPRESS WRITTEN CONSENT.

SHEET TITLE

**BASEMENT**  
**11th FLOOR**  
**MECHANICAL LAYOUTS**

SCALE	PROJECT NO.	SHEET NO.
AS SHOWN	105111	M02