



SILVER AVENUE

LEGEND

- PROPERTY LINE
- LIMITS OF WORK
- APPROXIMATE EXTENTS OF EXISTING SAND SAFETY SURFACE AREA
- APPROXIMATE LIMITS OF NEW PLAY AREAS AVAILABLE
- CONSTRUCTION ACCESS LOCATION
- APPROXIMATE AREAS OF NEW TOPSOIL AND SOD
- PROPOSED CRUSHED LIMESTONE SURFACING
- EXISTING TREE
- PROPOSED TREE
- EXISTING SHRUB TO BE PRUNED (BY OTHERS, N.I.C.)

NOTES

GENERAL NOTES

1. CONTRACTOR TO CONFIRM ALL EXISTING CONDITIONS, DIMENSIONS AND MATERIALS ON SITE AND REPORT ANY DISCREPANCIES TO THE CONTRACT ADMINISTRATOR PRIOR TO CONSTRUCTION
2. LOCATION OF UNDERGROUND STRUCTURES AS SHOWN ARE BASED ON THE BEST INFORMATION AVAILABLE BUT NO GUARANTEE IS GIVEN THAT ALL EXISTING UTILITIES ARE SHOWN OR THAT THE GIVEN LOCATIONS ARE EXACT. CONFIRMATION OF EXISTENCE AND EXACT LOCATION OF ALL SERVICES MUST BE OBTAINED FROM THE INDIVIDUAL UTILITIES BEFORE PROCEEDING WITH CONSTRUCTION
3. CONSTRUCTION ACCESS TO BE LIMITED TO THE ROUTES SPECIFIED ON SITE BY CONTRACT ADMINISTRATOR
4. ALL EXISTING TREES, SHRUBS, SIDEWALKS, CURBS, SOD, UTILITIES AND PAVING TO BE PROTECTED (UNLESS OTHERWISE NOTED) DURING CONSTRUCTION TO CITY OF WINNIPEG STANDARDS. CONTRACTOR TO MAKE GOOD ALL DAMAGED AREA DURING CONSTRUCTION BOTH ON AND OFF SITE TO CITY OF WINNIPEG STANDARDS AT THE CONTRACTORS COSTS
5. EXISTING GRADE TO BE MAINTAINED AT ALL PROPERTY LINES AND CITY SIDEWALKS AND WITHIN 3m OF TREES. ENSURE POSITIVE DRAINAGE IN ALL AREAS
6. ALL NOTES IN GREY INDICATE WORK TO BE COMPLETED BY OTHERS UNDER SEPARATE CONTRACT
7. LAYOUT TO BE APPROVED BY CONTRACT ADMINISTRATOR PRIOR TO ANY CONSTRUCTION OR REMOVAL
8. PLAY AREAS A & B LIMITS SHOWN ARE A MAXIMUM ONLY. PLAY EQUIPMENT CONTRACTOR TO ENSURE ALL PLAY EQUIPMENT SAFETY ZONES FALL WITHIN THE ALLOWABLE AREA. ALL NON-ENCROACHMENT ZONES TO COMPLY WITH SITE LAYOUT AND CSA STANDARDS. EFFICIENT USE OF SPACE AND MATERIALS WILL BE EVALUATED
9. PLAY AREAS A & B TO BE EXCAVATED BY SITE WORKS CONTRACTOR, ENSURE SUBGRADE GRADE TO DRAIN (MIN. 1%) PRIOR TO INSTALLATION OF PLAY SURFACE
10. TIMBER EDGING TO BE SUPPLIED AND INSTALLED BY SITE WORKS CONTRACTOR AS PER LAYOUT. PLAY AREAS LAYOUT TO AVOID 90° ANGLES (OR LESS) FORMED BY TIMBER EDGING ON INSIDE OF PROTECTIVE SURFACING ZONE (UNLESS OTHERWISE STATED)
11. REFER ALSO TO WRITTEN SPECIFICATIONS

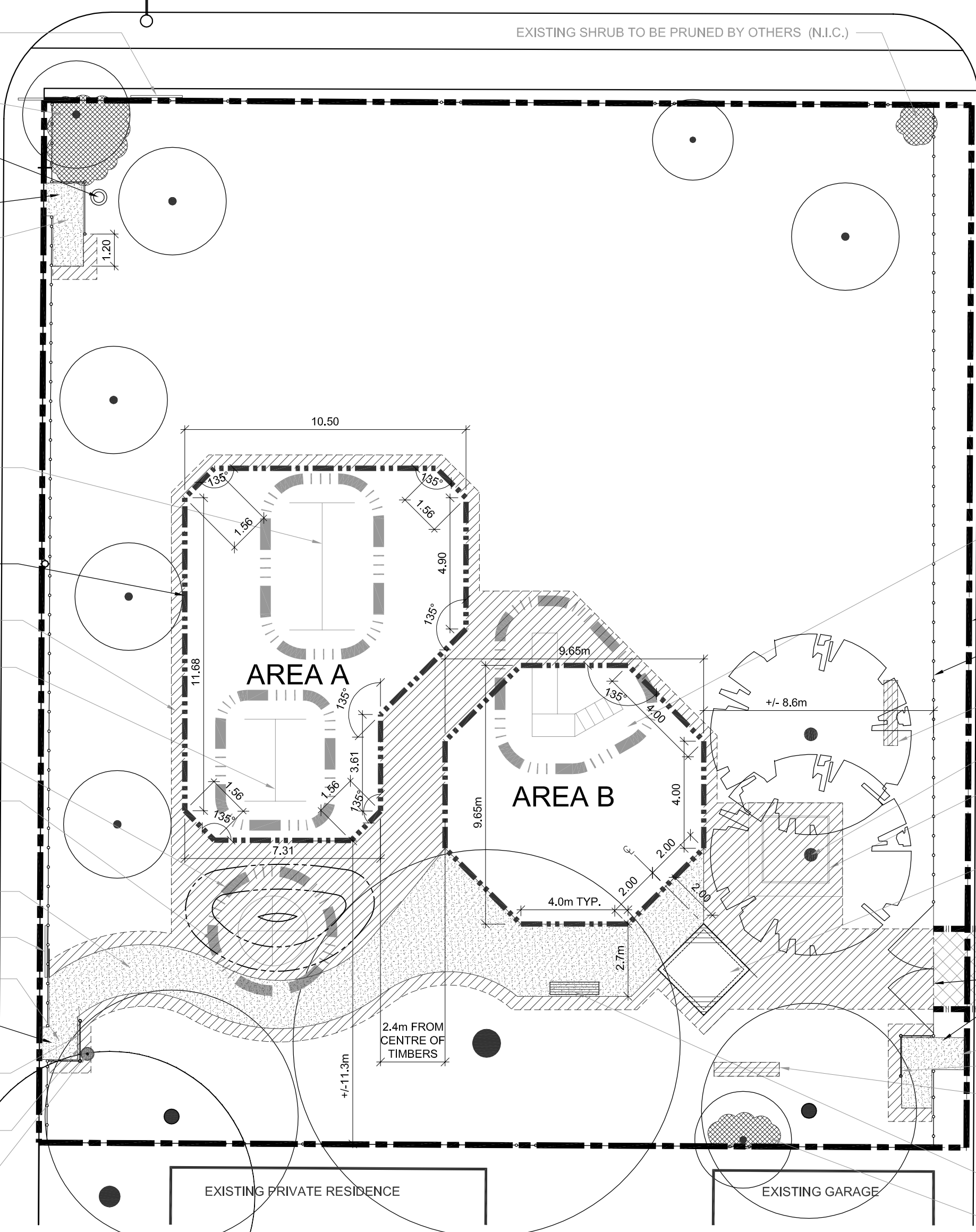
AREA A

12. SUPPLY & INSTALL PLAYGROUND STONE AS PER DRAWINGS AND SPECIFICATIONS
13. SUPPLY & INSTALL 3.0m (10') HIGH, SINGLE BAY SWING SET WITH 2 SLASH-PROOF BELT SEATS. ALSO REFER TO WRITTEN SPECIFICATIONS
14. SUPPLY & INSTALL 2.4m (8') HIGH, SINGLE BAY SWING SET WITH AND 2 SLASH-PROOF INFANT SEATS. ALSO REFER TO WRITTEN SPECIFICATIONS

AREA B

15. SUPPLY & INSTALL PLAYGROUND STONE AS PER DRAWINGS AND SPECIFICATIONS
16. SUPPLY & INSTALL CUSTOM HEAVY DUTY PLAY STRUCTURE FOR 2-5 YEAR OLDS, COMPLETE WITH CONCRETE FOOTINGS. SUPPLY & INSTALL INDEPENDENT PLAY COMPONENTS AS BUDGET AND SPACE PERMIT. ALSO REFER TO WRITTEN SPECIFICATIONS

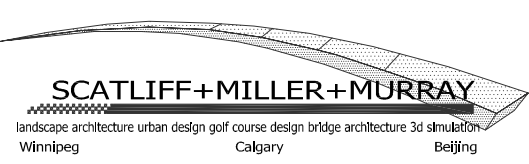
- NEW PARK SIGN BY OTHERS (N.I.C.)
- EXISTING SHRUB TO BE PRUNED (BY OTHERS, N.I.C.)
- EXISTING WASTE RECEPTACLE TO REMAIN
- EXISTING PARK ACCESS TO REMAIN
- NEW CRUSHED LIMESTONE SURFACING (BY OTHERS, N.I.C.)
- REMOVE AND DISPOSE OF EXISTING SWING SET AND EXISTING SAND SAFETY SURFACE AREA (BY OTHERS, N.I.C.)
- BACK EDGE OF TIMBER MIN. 1.95m AWAY FROM EDGE OF TREE TRUNK
- TOPSOIL AND SOD (BY OTHERS, N.I.C.)
- REMOVE AND DISPOSE OF EXISTING SWING SET AND EXISTING SAND SAFETY SURFACE AREA (BY OTHERS, N.I.C.)
- EARTH BERM BUILT UP (BY OTHERS, N.I.C.)
- REMOVE AND DISPOSE OF EXISTING MERRY-GO-ROUND AND EXISTING SAND SAFETY SURFACE AREA (BY OTHERS, N.I.C.)
- NEW CRUSHED GRANULAR PATHWAY (BY OTHERS, N.I.C.)
- NEW PARK SIGN BY OTHERS (N.I.C.)
- NEW CRUSHED GRANULAR ENTRY (BY OTHERS, N.I.C.)
- EXISTING PARK ACCESS TO REMAIN
- REMOVE AND DISPOSE OF CHAIN LINK BAFFLE GATE (BY OTHERS, N.I.C.)
- NEW CHAIN LINK BAFFLE GATE (BY OTHERS, N.I.C.)
- NEW WIRE BASKET RECEPTACLE (BY OTHERS, N.I.C.)



- REMOVE AND DISPOSE OF EXISTING SLIDE AND EXISTING SAND SAFETY SURFACE AREA (BY OTHERS, N.I.C.)
- LIMIT OF WORK
- EXISTING CHAIN LINK FENCE TO REMAIN
- REMOVE AND DISPOSE OF EXISTING BENCH (BY OTHERS, N.I.C.)
- 2 - LITTLE-LEAF LINDEN (BY OTHERS, N.I.C.)
- REMOVE AND DISPOSE OF EXISTING SAND BOX (BY OTHERS, N.I.C.)
- NEW SANDBOX (BY OTHERS, N.I.C.)
- LOCATION FOR CONSTRUCTION ACCESS, LOCATION TO BE CONFIRMED ON SITE WITH CONTRACT ADMINISTRATOR PRIOR TO STARTING CONSTRUCTION
- EXISTING GATE AND PARK ACCESS TO REMAIN
- NEW CRUSHED GRANULAR PAVING (BY OTHERS, N.I.C.)
- NEW CHAIN LINK BAFFLE GATE (BY OTHERS, N.I.C.)
- REMOVE AND DISPOSE OF EXISTING BENCH (BY OTHERS, N.I.C.)
- NEW BENCH (BY OTHERS, N.I.C.)
- EXISTING SHRUB TO BE PRUNED (BY OTHERS, N.I.C.)

1 KING EDWARD & SILVER PLAYGROUND - PROPOSED SITEPLAN
 PE-KS1 SCALE 1:150

All measurements in meters, unless otherwise noted.



LANDSCAPE ARCHITECT'S SEAL

Winnipeg THE CITY OF WINNIPEG
 DEPARTMENT OF PLANNING,
 PROPERTY AND DEVELOPMENT

RO	ISSUED FOR TENDER	08.10.01	JW
NO.	REVISION	DATE	BY

DESIGNED BY	JW	CHECKED BY	DM
DRAWN BY	WF/JW	APPROVED BY	DM
HOR. SCALE:	AS SHOWN	RELEASED FOR CONSTRUCTION:	
VERTICAL:			
DATE	2008.10.01	DATE	

PROJECT TITLE
ST. JAMES/BROOKLANDS PLAYGROUND RENOVATIONS
 PLAY EQUIPMENT

KING EDWARD & SILVER PLAYGROUND
 PROPOSED SITEPLAN

SHEET	OF
02	04
COMPUTER FILE NAME	8027-PLAY-KS.DWG
CITY DRAWING NUMBER	PE-KS1