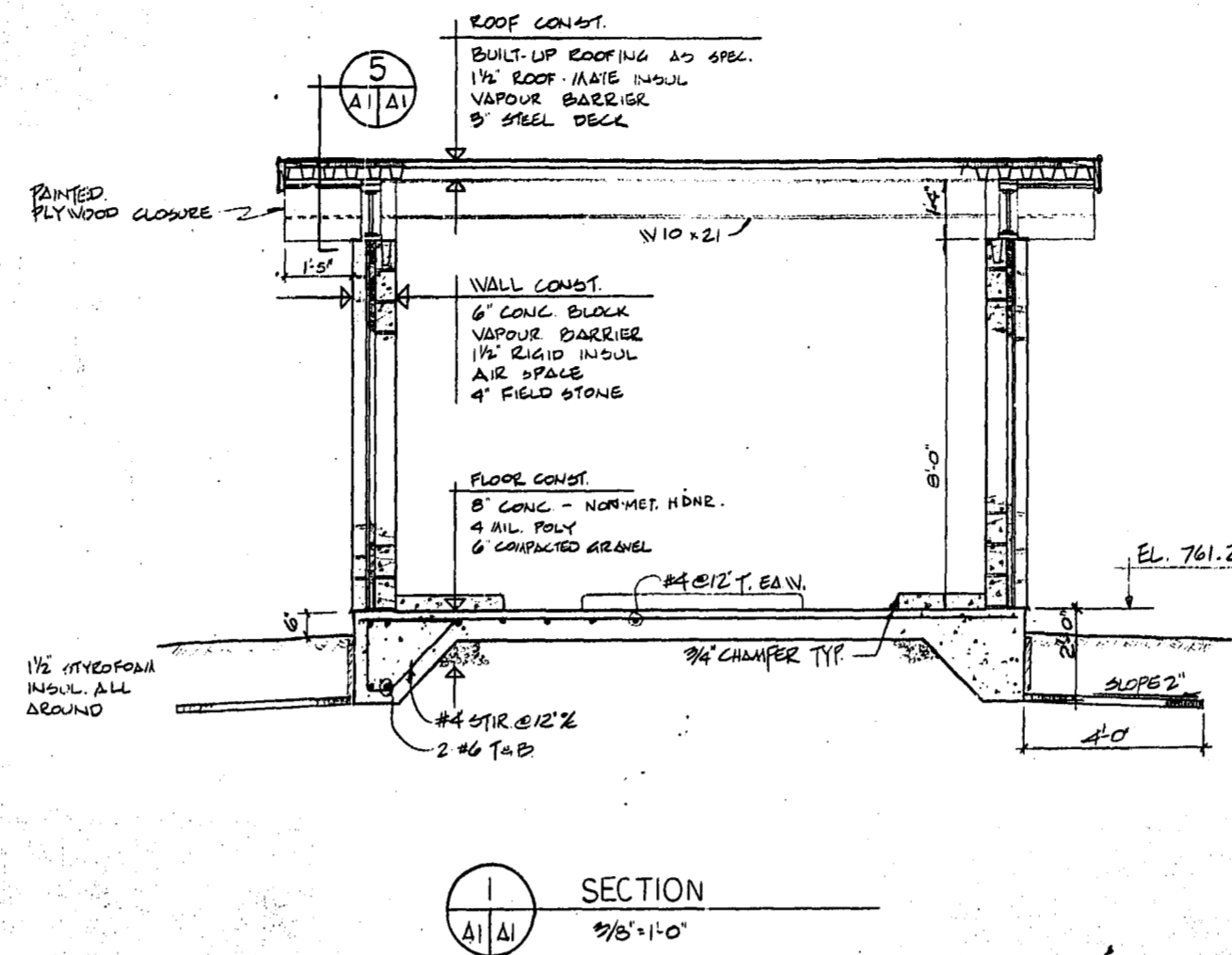
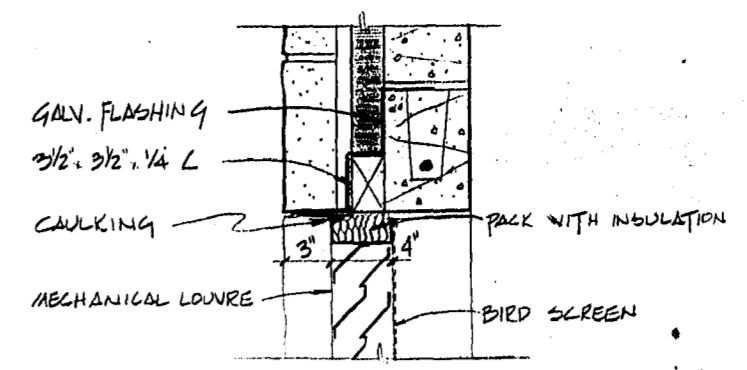


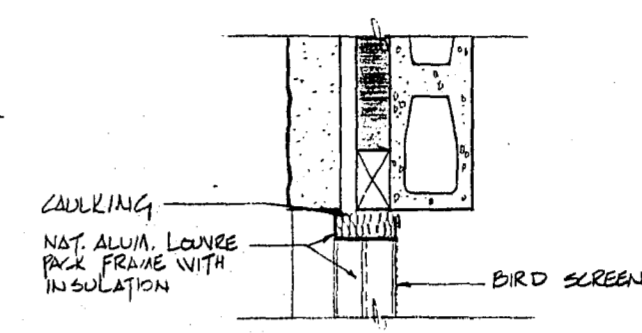
FLOOR PLAN
9/8'-1'-0"



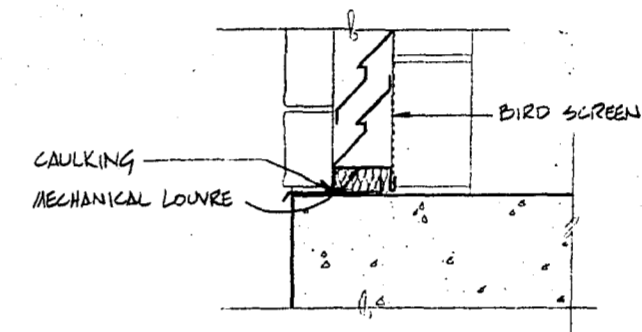
SECTION
9/8'-1'-0"



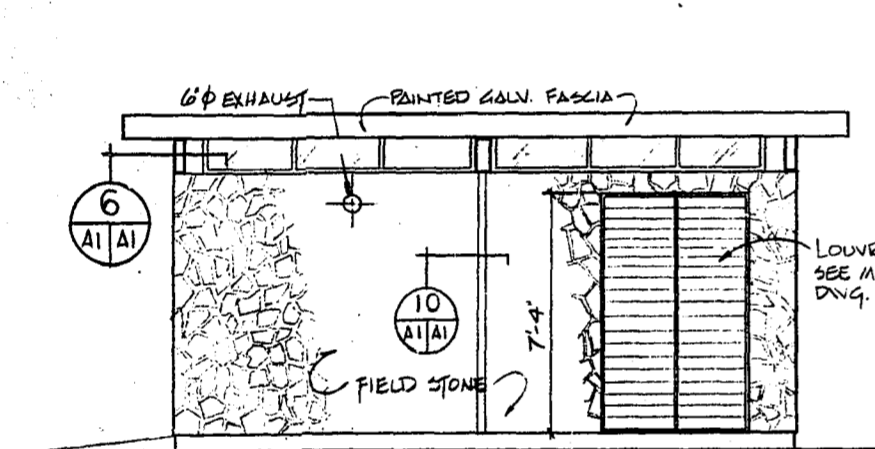
7 HEAD DETAIL
1 1/2'-1'-0"



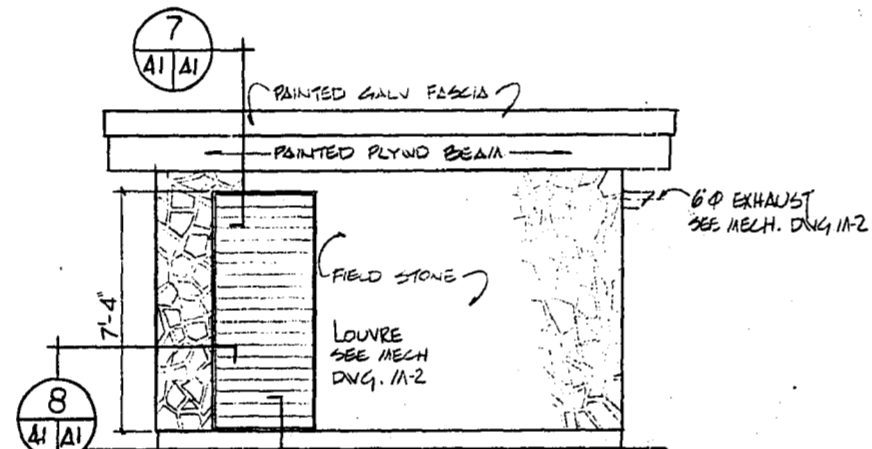
8 JAMB DETAIL
1 1/2'-1'-0"



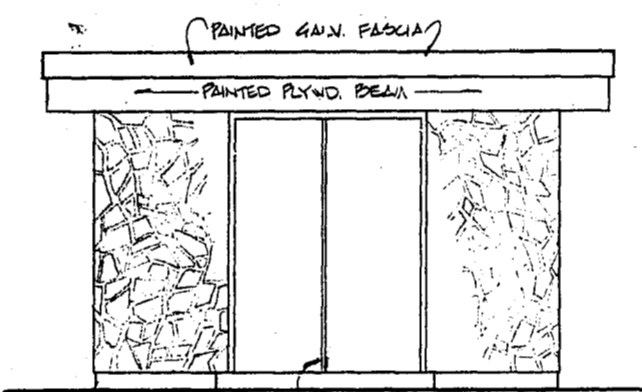
9 SILL DETAIL
1 1/2'-1'-0"



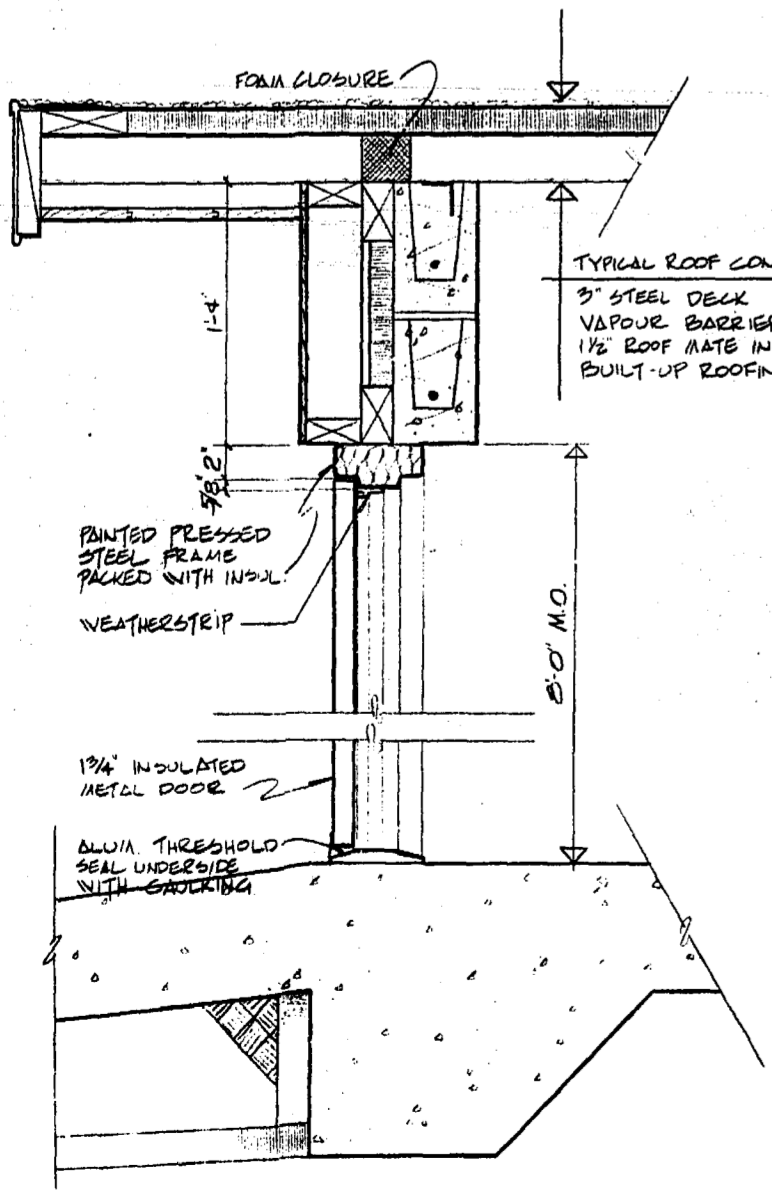
NORTH ELEVATION (SOUTH SIMILAR)
1 1/4'-1'-0"



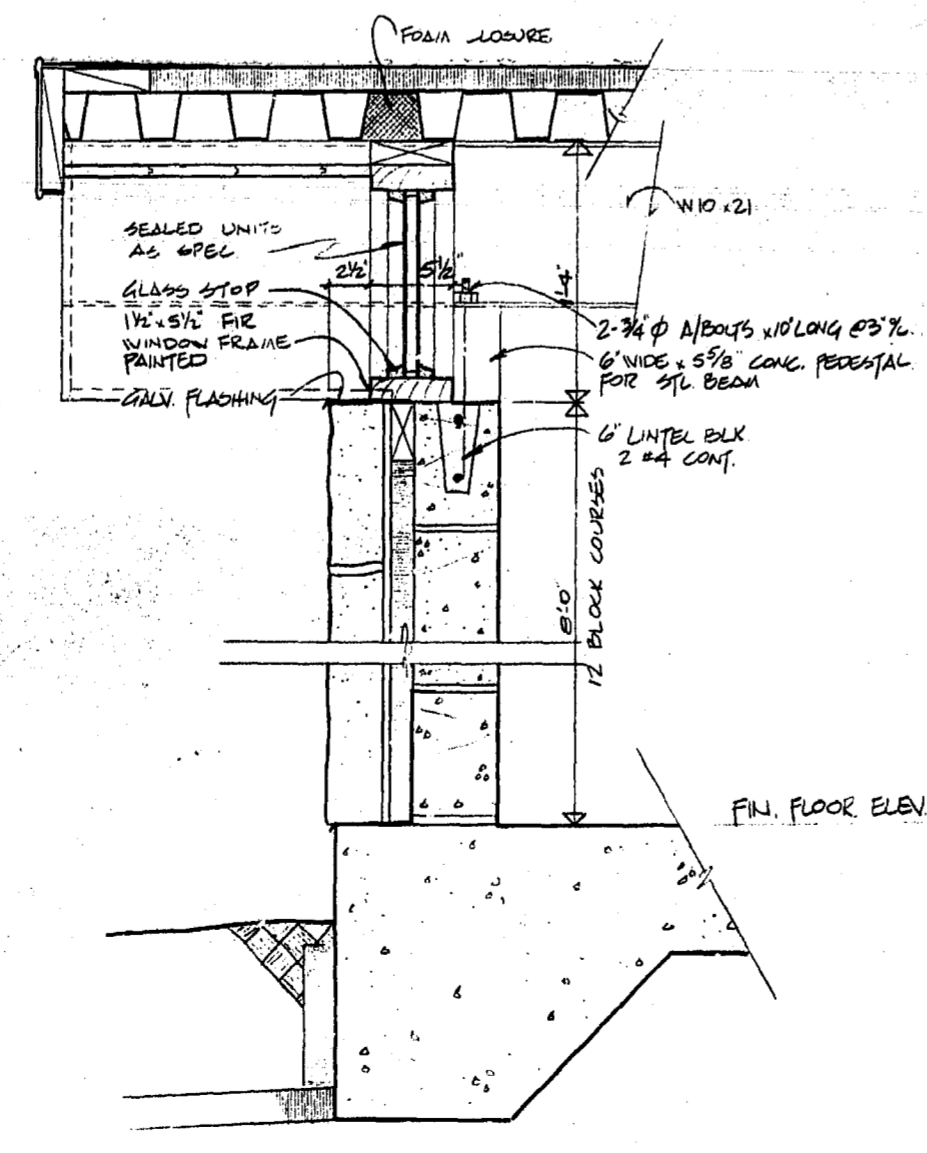
EAST ELEVATION
1 1/4'-1'-0"



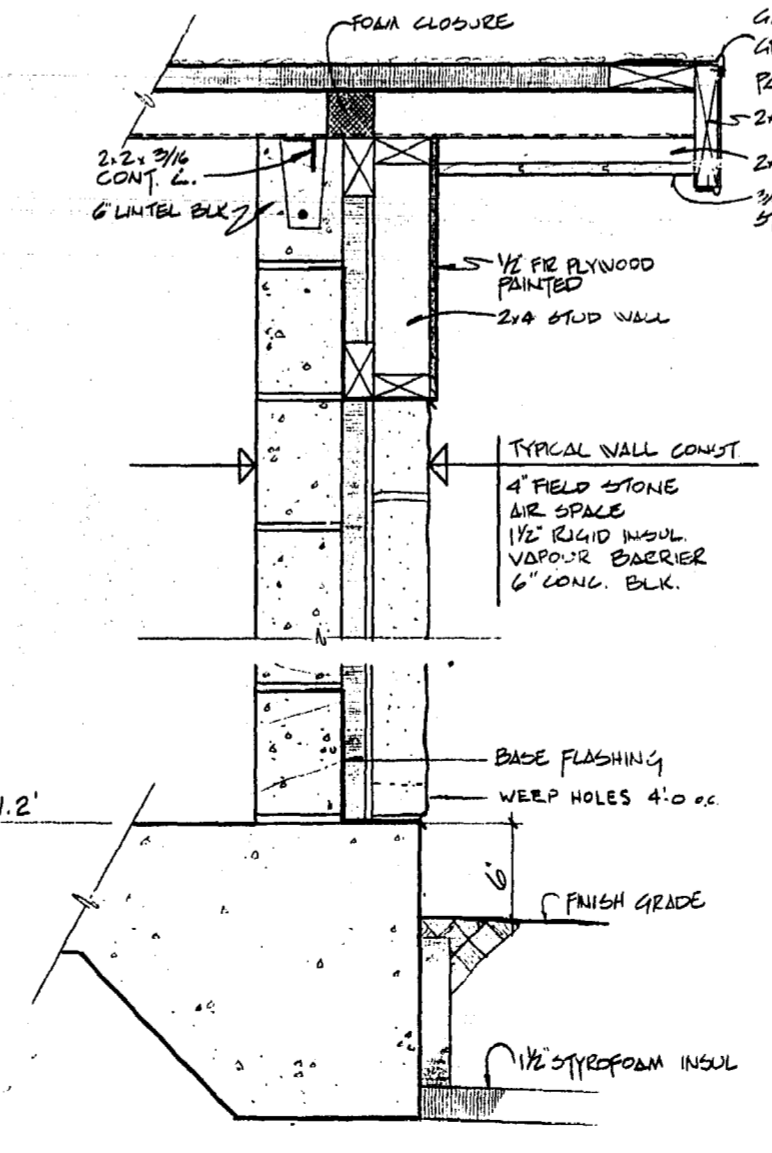
WEST ELEVATION
1 1/4'-1'-0"



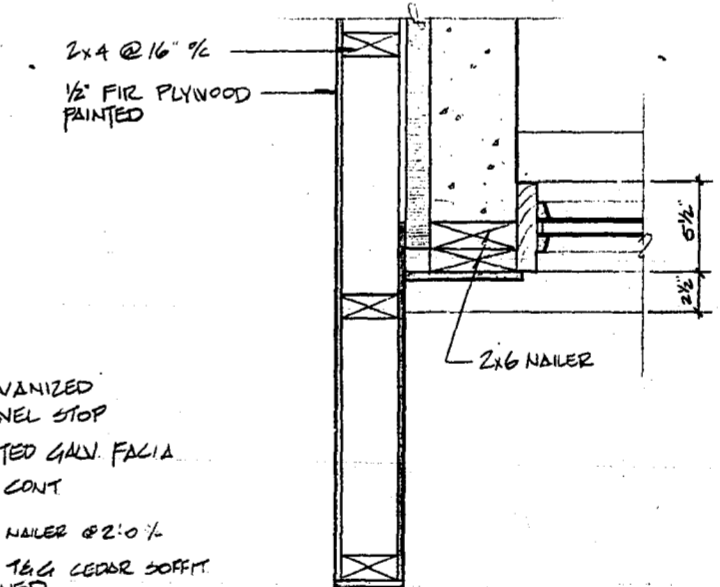
2 SECTION
1 1/2'-1'-0"



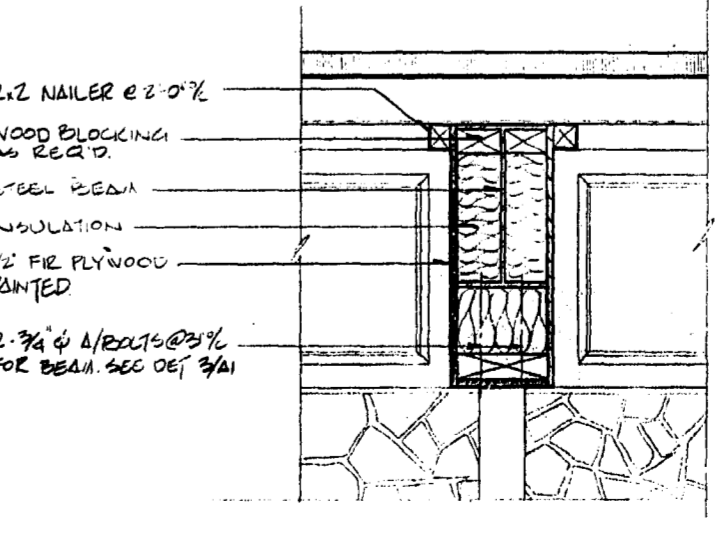
3 SECTION
1 1/2'-1'-0"



4 SECTION
1 1/2'-1'-0"



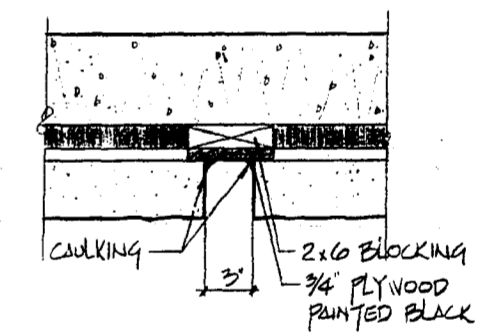
6 DETAIL
1 1/2'-1'-0"



5 DETAIL
1 1/2'-1'-0"

1. Materials
 Concrete - Minimum compressive strength at 28 days 3000 psi
 Maximum aggregate size 3/4"
 Maximum slump 4 - inch
 Air content 6 ± 1%
 Cement - Type I Portland Cement
- Minimum Concrete Cover -
 Unformed concrete in contact with earth 3"
 Formed concrete in contact with earth 2"
 Slabs 3/4"
- Reinforcing Steel -
 Intermediate Grade deformed bars conforming to
 CSA G30.12 - 1972 Grade 40
2. Concrete Finishes
 Interior concrete slabs and bases shall have steel
 trowel finish.
 All exposed edges to have a 3/4" chamfer.

- NOTES:
 1. REFER TO DRAWING E7 FOR CONCRETE TRANSFORMER BASE
 DETAILS BY BUILDING CONTRACTOR.
2. HARDWARE LIST
 3 PAIR F.B.D. 191 C15 BUTTS 1/2" x 4 (NRP)
 1 ONLY G51 PD x PLY/NET x 3/2 D. x TAD LOCK SET
 2 ONLY 1-3/4 x C15 DOOR STOPS
 2 ONLY H3 1251 x 12" C15 FLUSH EXT BOLTS
 3. FOR LOCATIONS OF MECHANICAL AND ELECTRICAL
 OPENINGS REFER TO MECHANICAL AND ELECTRICAL
 DRAWINGS.



10 SECTION
1 1/2'-1'-0"

NO.	DESCRIPTION	DATE
REVISIONS		
CITY OF WINNIPEG WORKS AND OPERATIONS DIVISION DISTRICT 5		
W.L. WARDROP & ASSOCIATES LTD. ENGINEERING CONSULTANTS WINNIPEG • THUNDER BAY • REGINA • SASKATOON • EDMONTON		
WINDSOR PARK LIFT STATION NEW GENERATING STATION PLAN, ELEVATIONS, SECTIONS, & DETAILS		
DESIGNED BY:	DRAWN BY:	CHECKED BY:
J.K.	D.A.	J.H.
APPROVED BY:	DATE: DEC 1/75	
SCALE: AS SHOWN		REV:
DRAWING NO: 76012-04-A1		REV:

AS-BUILT
 DATE: FEB. NO. PAGE
 76012

