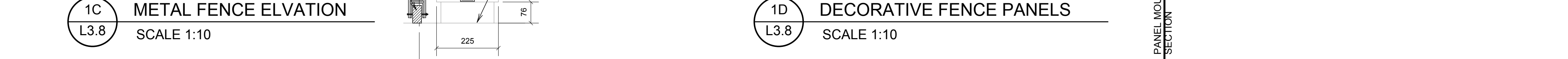
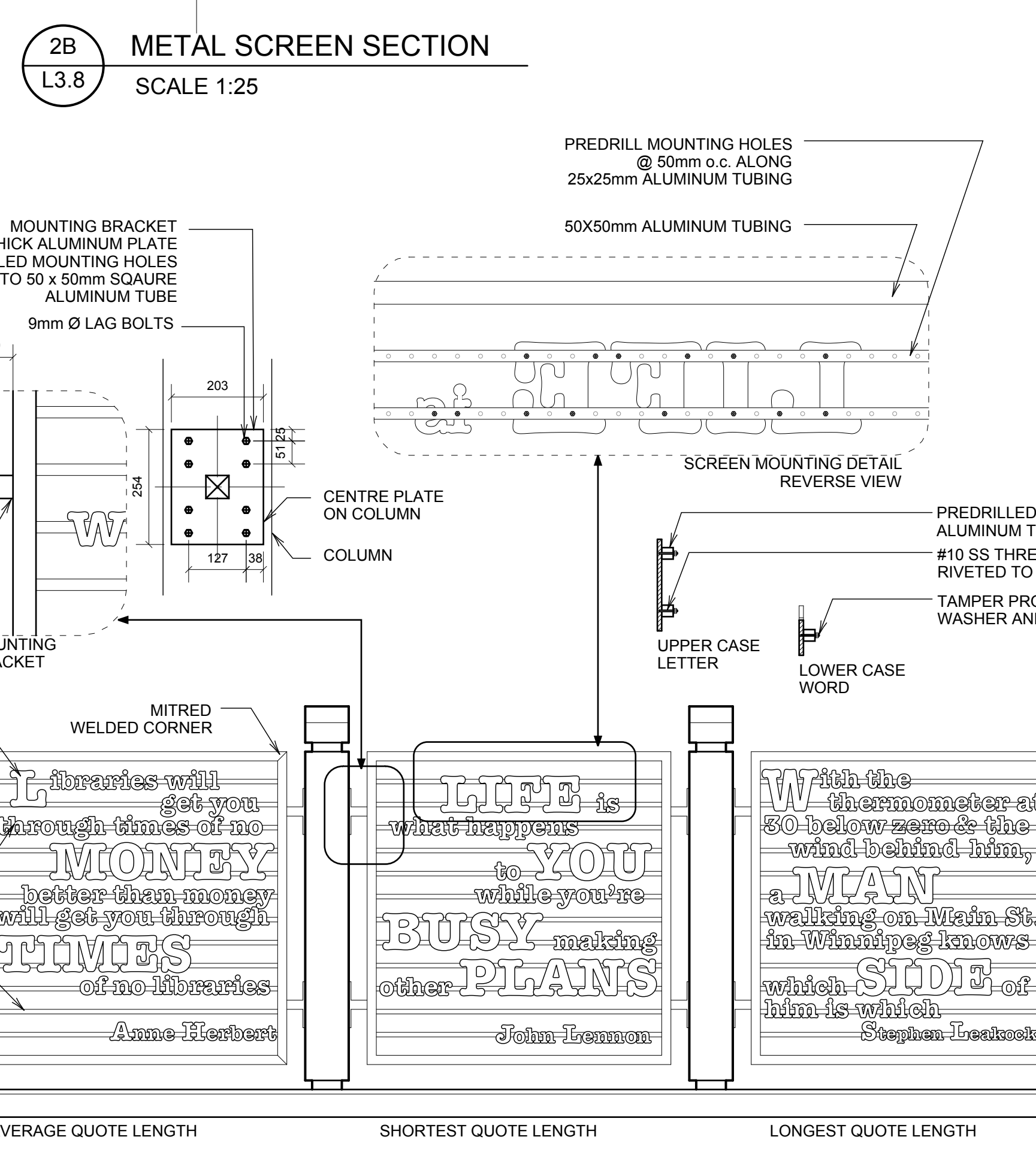
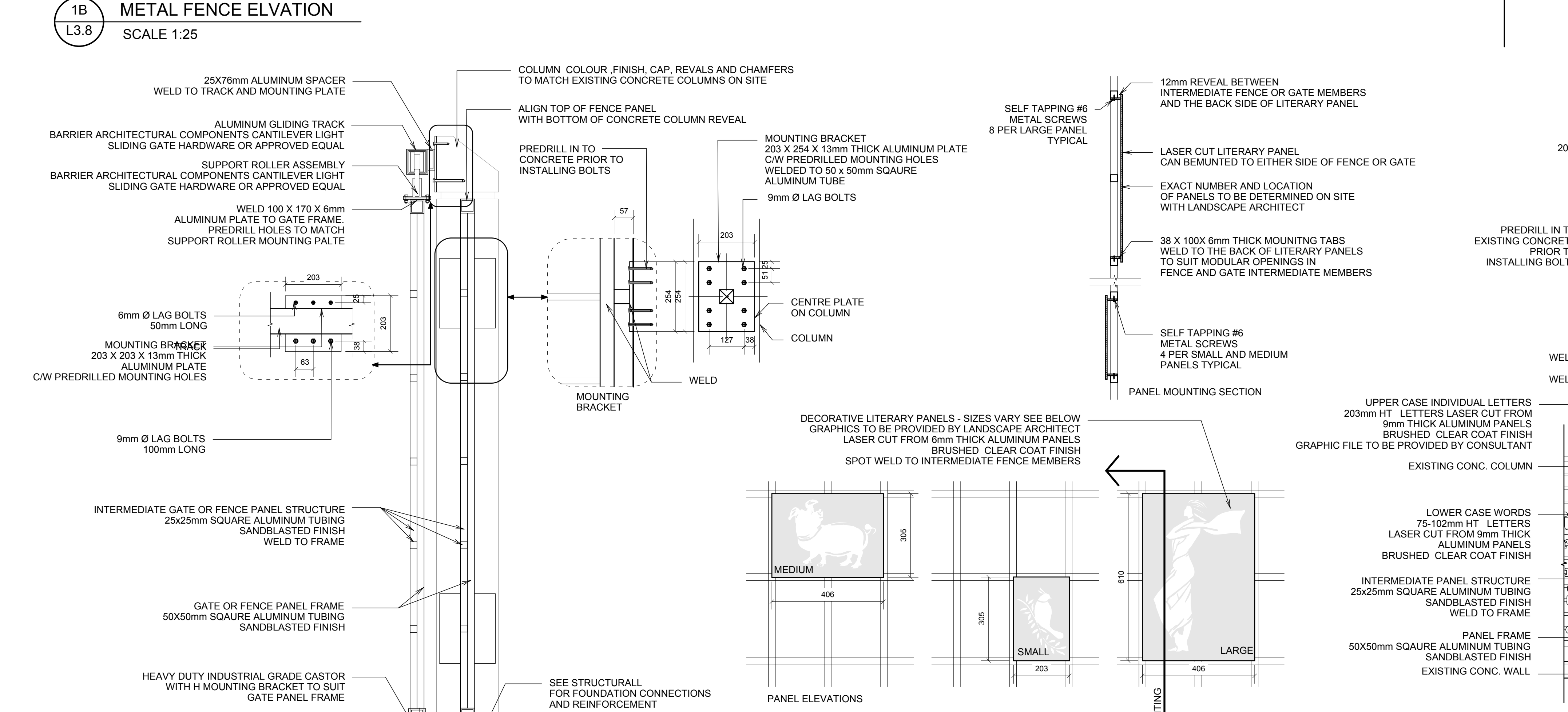


- FENCE AND SCREEN NOTES:**
- CONSULTANT TO PROVIDE DIGITAL EPS, PDF OR AI FILES AS REQUESTED FOR SCREEN GRAPHICS.
 - PROVIDE SHOP DRAWINGS AND SAMPLES OF FENCE PANELS AS SPECIFIED.
 - ENSURE ALL METAL IS WELDED AND FABRICATED IN A SHOP ENVIRONMENT AND WELD IS CLEAN AND PRECISE TO SPECIFIED STANDARDS.
 - ENSURE ALL FASTENERS ARE HEAVY DUTY, NON CORRODING EXTERIOR GRADE APPROPRIATE TO THE MATERIALS BEING FASTENED.
 - PREDRILL MOUNTING HOLES IN ALL LOCATIONS.
 - FIELD LOCATE ALL PANELS FOR CONSULTANT REVIEW PRIOR TO ATTACHING TO EXISTING CONCRETE COLUMNS.



APEGM		Seal	Client	Mechanical/Structural Engineer	Architect	Landscape Architect	Structural Engineer	The general contractor shall check & verify all dimensions and report any errors or omissions to the designers.			
			Winnipeg PLANNING PROPERTY AND DEVELOPMENT DEPARTMENT 3rd Floor - 65 Garry Street, Winnipeg, MB R2C 4K4	SMS ENGINEERING SMS Engineering Ltd. Consulting Engineers 778 Brandon Street Winnipeg MB Canada R2N 1R3 Telephone 204.775.0291 Fax 204.772.2153 sms@smseng.com	LM Architectural Group	HILDERMAN THOMAS FRANK CRAM Landscape Architecture • Planning 550-112 St. James Street East Winnipeg, Manitoba R2N 1R3 Telephone 204-944-1927 Facsimile 204-947-1427	300-275 Carlton Street Winnipeg, Manitoba R3C 5R6 T 204. 943. 7501 F 204. 943. 7507	MILLENNIUM LIBRARY PARK REDEVELOPMENT 251 DONALD STREET WINNIPEG, MANITOBA			
3 Sept 22/08 ISSUED FOR TENDER		MG						Sheet Title			
2 July 16/08 99% FOR CITY OF WINNIPEG REVIEW								METAL FABRICATION DETAILS 2			
1 Dec 12/07 75% FOR CITY OF WINNIPEG REVIEW								L3.8			
No.	Date	Issue/Revision	By					Design	Scale	Date	File
								MAG/GM	AS NOTED	9/22/08	06-021