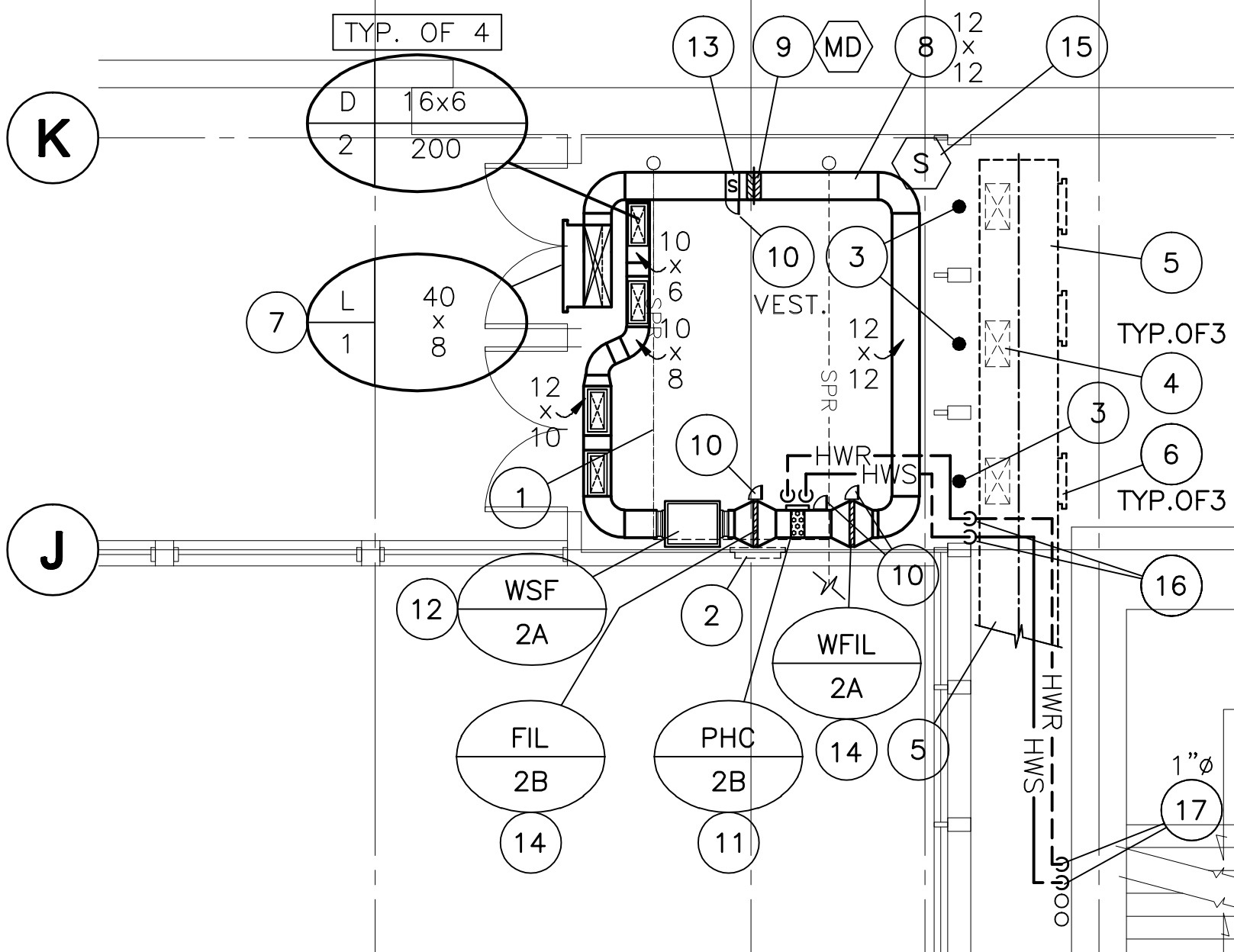


KEY PLAN
N.T.S.

**SUPPLEMENTARY NOTES—NEW WORK
M2.6 & M2.7 WEST**

1. Existing sprinkler to remain as is.
2. Existing wall electric force flow to remain as is.
3. Existing wall opening to be patched see architectural work.
4. Existing trunk main. Patch as an access door. For painting see architectural work.
5. Existing supply trunk main.
6. Existing supply air grille to remain as is.
7. New louver. See Architectural work.
8. New outside air duct.
9. New outside air motorized damper.
10. New access door.
11. New glycol preheat coil. See Piping Detail.
12. New supply fan. Suspend from structure c/w vibration spring hanger arrangement.
13. Adjustable Sensor. (Starts Fan). Modulates 3-way valve (indoor/outdoor temp).
14. New summer winter filter.
15. Space override reset.
16. Offset as required.
17. Up from Main Floor.



REV	DESCRIPTION	DATE	BY
4	ISSUED FOR TENDER	13 JUN/08	BP/RF
3	ISSUED FOR REVIEW	10 APR./08	BP/RF
2	ISSUED FOR TENDER	10 DEC./07	BP/RF
1	ISSUED FOR REVIEW		BP/RF

TPR MECHANICAL CONSULTANTS LTD.
101-1555 ST. JAMES STREET, R3M 1B5
Ph. 632-4088 Fax. 632-4088
unies Ltd. Consulting Engineers

THIS DRAWING MUST NOT BE SCALED.
THE GENERAL CONTRACTOR SHALL VERIFY ALL DIMENSIONS, DATUMS AND LEVELS PRIOR TO COMMENCEMENT OF WORK AND IS HELD RESPONSIBLE FOR REPORTING ANY DISCREPANCY OR OMISSION TO NEIL COOPER ARCHITECT INC IMMEDIATELY.
THIS DRAWING IS THE EXCLUSIVE PROPERTY OF NEIL COOPER ARCHITECT INC AND CAN BE REPRODUCED ONLY WITH THE PERMISSION OF NEIL COOPER ARCHITECT INC. IN WHICH CASE THE REPRODUCTION MUST BEAR THEIR NAME AS THE ARCHITECTURAL FIRM.

DRAWING: **PART SECOND FLOOR PLAN NO.2 NEW WORK**
PROJECT: **PAN AM POOL WEST VESTIBULES**
25 Poseiden Bay - Winnipeg, MB

Neil Cooper Architect Inc.
10-393 Berry Street, Winnipeg, Manitoba R3J 1N6

Tuplin Group Inc.
20-091 Mainway Street, Winnipeg, Manitoba R2C 2A4

DRAWN BY: lp	CHECKED BY: BP/RF	SHEET NO: M2.7R4	REV NO:
DATE: 13 JUNE 2008	SCALE: As Noted		
FILE:			

PART SECOND FLOOR PLAN NO.2 - NEW WORK
SCALE: 3/16" = 1'-0"