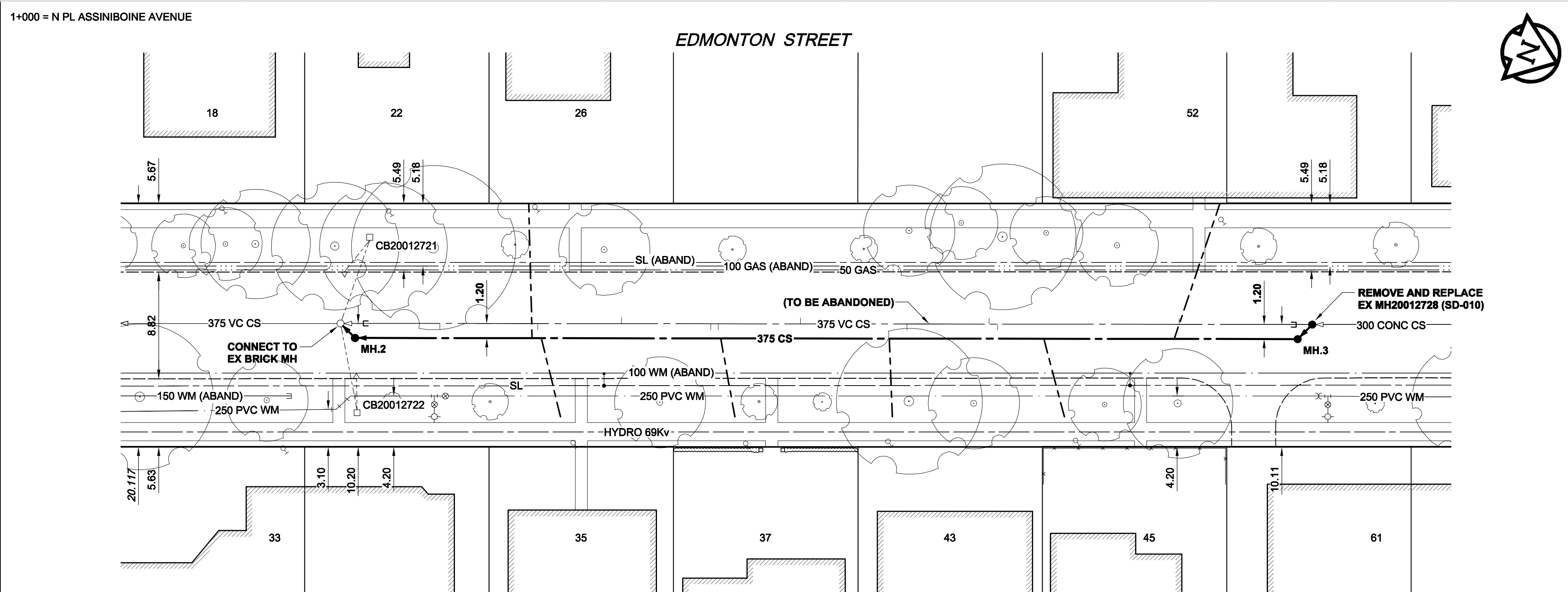
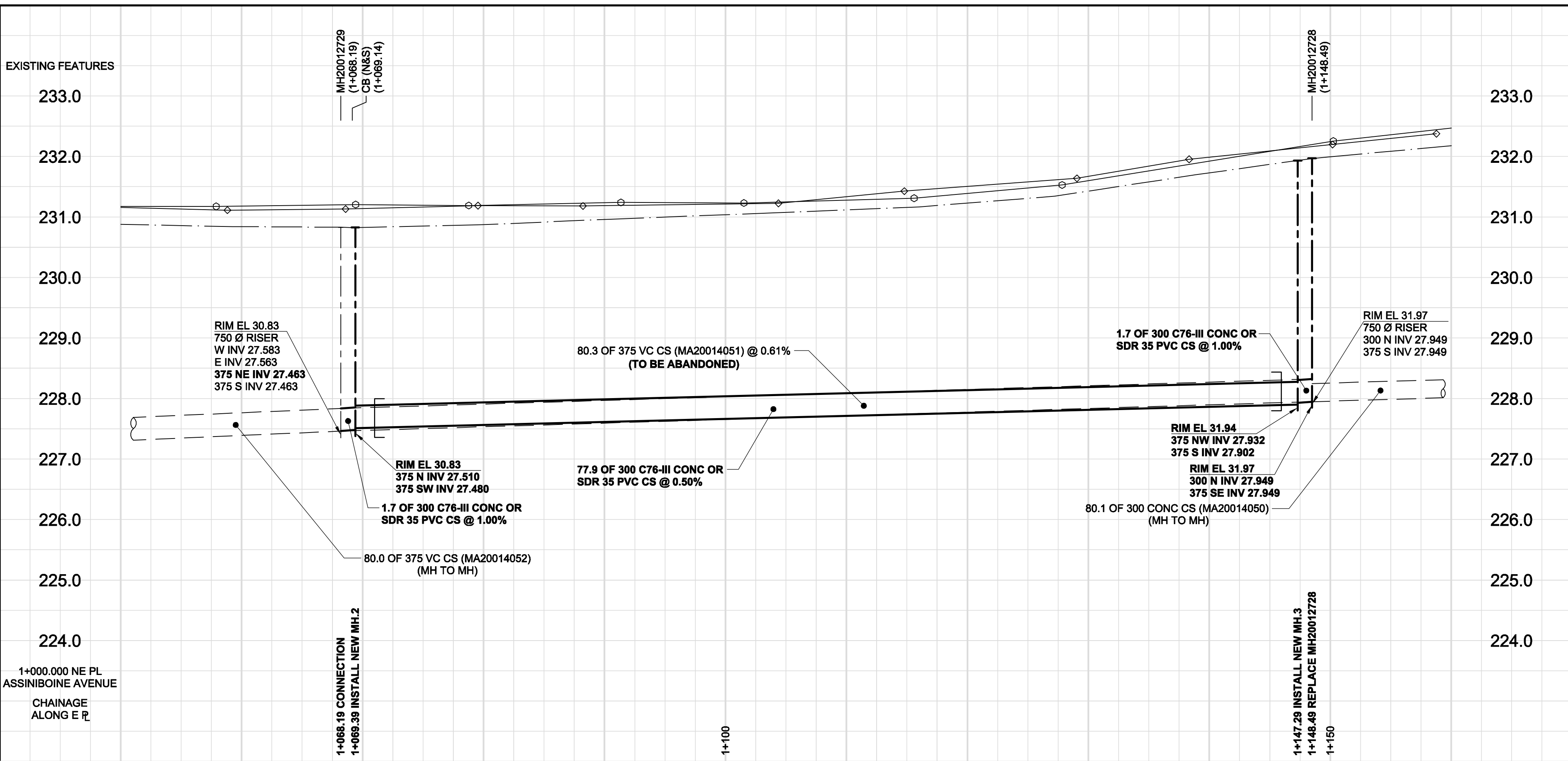


D SIZE 22" x 34" (559mm x 864mm)

PLOT: 08/10/17 10:28:16 AM

UMA REVIEW DRAFT CHK WJD
UMA FILE NAME: D265-228-02_01-C-1017_RX.dwg Saved By: berardik



WARNING
IF POWER EQUIPMENT OR EXPLOSIVES ARE TO BE USED FOR EXCAVATION ON THIS PROJECT, THE CONTRACTOR MUST:
1) NOTIFY THE GAS COMPANY OF THE PROPOSED LOCATION OF EXCAVATION.
2) TAKE PRECAUTION TO AVOID DAMAGE TO GAS COMPANY INSTALLATIONS.
SEE PROVINCIAL REGULATION 140/92 FOR DETAILS

METRIC
WHOLE NUMBERS INDICATE MILLIMETRES
DECIMALIZED NUMBERS INDICATE METRES

EXISTING	NEW	EXISTING	NEW	EXISTING	NEW	EXISTING	NEW	EXISTING	NEW
150 WM	150 WM	300 LDS	300 LDS	250 WWS	250 WWS	MANHOLE	MANHOLE	CATCH BASIN	CATCH BASIN
HYDRANT	HYDRANT	VALVE	VALVE	LAND DRAINAGE SEWER	LAND DRAINAGE SEWER	WASTE WATER SEWER	WASTE WATER SEWER	PIPE ABANDONMENTS	PIPE ABANDONMENTS
REDUCER	REDUCER	COUPLING	COUPLING	ANODE	ANODE	MTS	MTS	GAS	GAS
TESTHOLE	TESTHOLE	LAMP STANDARD	LAMP STANDARD	TREE	TREE	WATERMAIN	WATERMAIN	HYDRANT	HYDRANT
VALVE	VALVE	LAND DRAINAGE SEWER	LAND DRAINAGE SEWER	WASTE WATER SEWER	WASTE WATER SEWER	PAVEMENT CROWN	PAVEMENT CROWN	N/W PROPERTY LINE	N/W PROPERTY LINE
S/E PROPERTY LINE	S/E PROPERTY LINE	N/W GUTTER	N/W GUTTER	S/E GUTTER	S/E GUTTER				

LOCATION APPROVED
UNDERGROUND STRUCTURES
SUPR. U/G STRUCTURES DATE COMMITTEE
NOTE:
LOCATION OF UNDERGROUND STRUCTURES AS SHOWN ARE BASED ON THE BEST INFORMATION AVAILABLE. BUT NO GUARANTEE IS GIVEN THAT ALL EXISTING UTILITIES ARE SHOWN OR THAT THE GIVEN LOCATIONS ARE EXACT. CONFIRMATION OF EXISTENCE AND EXACT LOCATION OF ALL SERVICES MUST BE OBTAINED FROM THE INDIVIDUAL UTILITIES BEFORE PROCEEDING WITH CONSTRUCTION.

NO.	REVISIONS	YYMMDD	BY
0	ISSUED FOR CONSTRUCTION	08/10/14	KMB

DESIGNED BY	CHECKED BY	APPROVED BY	DATE
ALD	FMI	BRYAN WEBER	08/10/16

UMA | AECOM
© 2006 UMA ENGINEERING LTD. ALL RIGHTS RESERVED.
DESIGNED BY: ALD
CHECKED BY: FMI
APPROVED BY: BRYAN WEBER
DATE: 08/10/16

PROFESSIONAL'S SEAL
ISSUED FOR CONSTRUCTION WAS SEALED BY A. NAGY AND DATED 08/10/16
CONSULTANT DRAWING NO. 17 D265-228-02

THE CITY OF WINNIPEG
WATER AND WASTE DEPARTMENT
2008 COMBINED SEWER RENEWALS BY EXTERNAL POINT REPAIRS & REPLACEMENTS CONTRACT 30
EDMONTON STREET
50m N OF ASSINIBOINE AVENUE
165m S OF BROADWAY AVENUE

SHEET 17 OF 18
CITY DRAWING NUMBER 8688
REV 0

BID OPPORTUNITY NO. 651-2008

SEWER SERVICE INFORMATION

ADDRESS	SIZE	PL. TIE (SHORT/LONG)	JUNCTION TIE	REMARKS
18 EDMONTON ST				NO INFO
22 EDMONTON ST				NO INFO
26 EDMONTON ST				NO INFO
33 EDMONTON ST				NO INFO
35 EDMONTON ST				NO INFO
37 EDMONTON ST				NO INFO
43 EDMONTON ST				NO INFO
45 EDMONTON ST				NO INFO
52 EDMONTON ST				NO INFO
61 EDMONTON ST				NO INFO

WATER SERVICE INFORMATION

ADDRESS	DISTANCE TO PROPERTY	SIZE & TYPE	SHORT & LONG MEASUREMENT	CORPORATION LOCATION	CATHODIC PROTECTION	REMARKS
18 EDMONTON ST (RESIDENTIAL)	10	4.88 SNL HOUSE		0.3 N OF S/C		TRANSFERRED SERVICE TO NEW 150 WM / 75 TAX 1-926760-12 112 STES
22 EDMONTON ST (COMMERCIAL)	34	46.94>NNL ASSINIBOINE	7.44 SNL BLDG	2.59 N OF SC		FORMERLY 18 EDMONTON TAX ROLL 1-926750 CPLG. 0.37 FROM
26 EDMONTON ST (COMMERCIAL)	10	75.74>NNL ASSINIBOINE	1.37 NSL BLDG	0.98 N OF SC		PROP P4105465 METER DELIVERED INSTALLED BY A CONTRACTOR - NO SKETCH
33 EDMONTON ST (COMMERCIAL)	60	67.84>NNL ASSINIBOINE	14.45 SNL BLDG	OPP VALVE		TAX 1-926450-12 16 STES HERE CPLG. 0.64 FROM
35 EDMONTON ST (RESIDENTIAL)	10	62.85>NNL ASSINIBOINE	4.85 NSL BLDG	OPP SC		TAX 1-926450-12 16 STES HERE CPLG. 1.01 FROM CORP
37 EDMONTON ST (RESIDENTIAL)	34	86.93>NNL ASSINIBOINE	4.57 NSL BLDG	OPP SC		TAX 1-926470-12 16 STES HERE CPLG. 0.76 FROM
43 EDMONTON ST (RESIDENTIAL)	10	101.07>NNL ASSINIBOINE	2.68 NSL	1.37 S OF SC		TAX 1-926470-12 16 STES HERE CPLG. 0.49 FROM CORP
45 EDMONTON ST (RESIDENTIAL)	34	115.12>NNL ASSINIBOINE	1.13 NSL BLDG	0.34 N OF SC		NORTH SERVICE REVERSE TAP
52 EDMONTON ST (RESIDENTIAL)	15	128.63>NNL ASSINIBOINE	11.58 SNL BLDG	0.98 S OF SC		SOUTH SERVICE REVERSE TAPPED
61 EDMONTON ST (FIRE DOMESTIC)	60	142.71 ASSINIBOINE	14.72 SNL BLDG	30 N OF SC		UNION 1.22 FROM WM, BENDS 0.85 RISE

SEWER JUNCTION INFORMATION

REF. MH	DIST FROM*	SIZE*	CLOCK AT*
MH20012728	11.00	1500	02
MH20012728	26.00	1500	10
MH20012728	26.70	1500	02
MH20012728	33.50	1500	10
MH20012728	42.30	1500	02
MH20012728	49.10	1500	10
MH20012728	49.70	1500	10
MH20012728	57.10	1500	02
MH20012728	64.00	1500	10
MH20012728	64.50	1500	02
MH20012728	72.10	1500	10

*JUNCTION INFORMATION FROM VIDEO INSPECTION

- CONSTRUCTION NOTES:**
- INSTALL NEW SEWER BY TRENCHLESS METHODS.
 - RENEW SEWER SERVICES TO PROPERTY LINE ON WEST SIDE AND IN BOULEVARD ON EAST SIDE TO WITHIN 0.5m OF WEST EDGE OF SIDEWALK
 - ALL SEWER AND WATER SERVICES TO BE LOCATED IN THE FIELD BY THE CONTRACTOR.
 - ABANDON EXISTING SEWER AND SEWER SERVICES.