

SEWER JUNCTION INFORMATION FROM SEWER VIDEO INSPECTION S-MA60004405

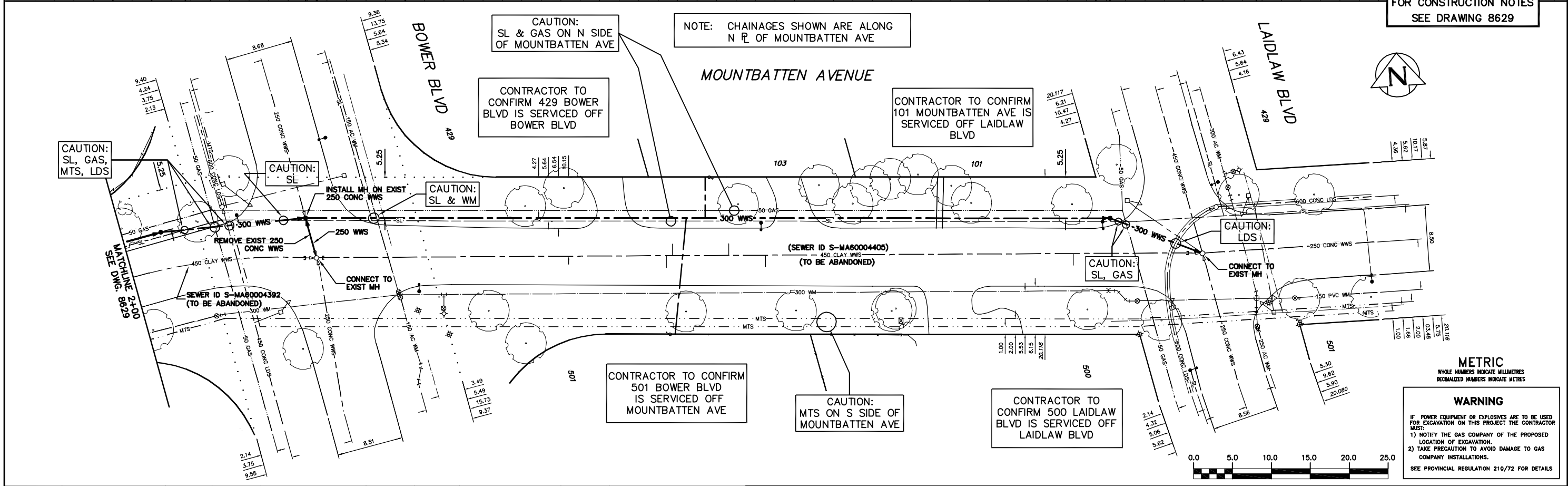
DISTANCE FROM MH S-MH60003200

44.9	E	100*	SOUTH	JX
45.7	E	100*	NORTH	JX
52.9	E	150*	NORTH	CX
57.6	E	100*	SOUTH	CXI
97.1	E	100*	SOUTH	CN

FOR SEWER SERVICE TABLE SEE DRAWING 8629

FOR WATER SERVICE TABLE SEE DRAWING 8629

FOR CONSTRUCTION NOTES SEE DRAWING 8629



**METRIC**  
WHOLE NUMBERS INDICATE MILLIMETRES  
DECIMALIZED NUMBERS INDICATE METRES

**WARNING**  
IF POWER EQUIPMENT OR EXPLOSIVES ARE TO BE USED FOR EXCAVATION ON THIS PROJECT THE CONTRACTOR MUST:  
1) NOTIFY THE GAS COMPANY OF THE PROPOSED LOCATION OF EXCAVATION.  
2) TAKE PRECAUTION TO AVOID DAMAGE TO GAS COMPANY INSTALLATIONS.  
SEE PROVINCIAL REGULATION 210/72 FOR DETAILS

200 WM	WATERMAIN	200 WM	SL, HYDRO	150 WM	WATERMAIN	150 WM	LOCATION APPROVED	B.M. ELEV.	FIELD BOOK #	<b>CITY OF WINNIPEG</b> <b>WATER AND WASTE</b> <b>ENGINEERING DIVISION</b>	ENGINEER'S SEAL  ORIGINAL SIGNED BY K.R. ZUREK 08/07/17	<b>THE CITY OF WINNIPEG</b> <b>WATER AND WASTE DEPARTMENT</b>  2008 SEWER RENEWALS CONTRACT 15 <b>MOUNTBATTEN AVENUE</b> MH AT BOWER BOULEVARD TO MH AT LAIDLAW BOULEVARD	SHEET 8 of 8  CITY DRAWING NUMBER <b>8630</b>
525 LDS	LAND DRAINAGE SEWER	525 LDS	50 GAS	300 LDS	LAND DRAINAGE SEWER	300 LDS	SUPV. U/G STRUCTURES COMMITTEE	POSTED TO LIS	DESIGNED BY SGL				
375 WWS	WASTEWATER SEWER	375 WWS	SURVEY BAR	250 WWS	WASTEWATER SEWER	250 WWS	DATE		DRAWN BY CJH	APPROVED BY KZ			
MANHOLE	○	MANHOLE	FENCE	PROFILE	PROFILE	PROFILE	NOTE:		HOR. SCALE 1:250	RELEASED FOR CONSTRUCTION			
CATCH BASIN	□	CATCH BASIN	POLE - HYDRO, MTS	GROUND ABOVE PIPE	GROUND ABOVE PIPE	GROUND ABOVE PIPE	LOCATION OF UNDERGROUND STRUCTURES AS SHOWN ARE BASED ON THE BEST INFORMATION AVAILABLE BUT NO GUARANTEE IS GIVEN THAT ALL EXISTING UTILITIES ARE SHOWN OR THAT THE GIVEN LOCATIONS ARE EXACT. CONFIRMATION OF EXISTENCE AND EXACT LOCATION OF ALL SERVICES MUST BE OBTAINED FROM THE INDIVIDUAL UTILITIES BEFORE PROCEEDING WITH CONSTRUCTION.		VERTICAL 1:50				
CURB INLET	▽	CURB INLET	CURB STOP	☉ DITCH (NORTH & WEST)	☉ DITCH (NORTH & WEST)	☉ DITCH (NORTH & WEST)							
JUNCTIONS	└─┘	JUNCTIONS	GUY ANCHOR	☉ GUTTER (NORTH & WEST)	☉ GUTTER (NORTH & WEST)	☉ GUTTER (NORTH & WEST)							
CULVERT	▬▬▬	CULVERT	LIGHT STANDARD	☉ GUTTER (SOUTH & EAST)	☉ GUTTER (SOUTH & EAST)	☉ GUTTER (SOUTH & EAST)							
ANODE	⊕	ANODE	TREE										
EXISTING	LEGEND-PLAN	PROPOSED	EXISTING	LEGEND-PLAN	PROPOSED	EXISTING	LEGEND-PROFILE	PROPOSED	NO. REVISIONS	DATE	BY	DATE	