

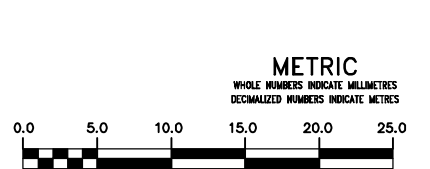
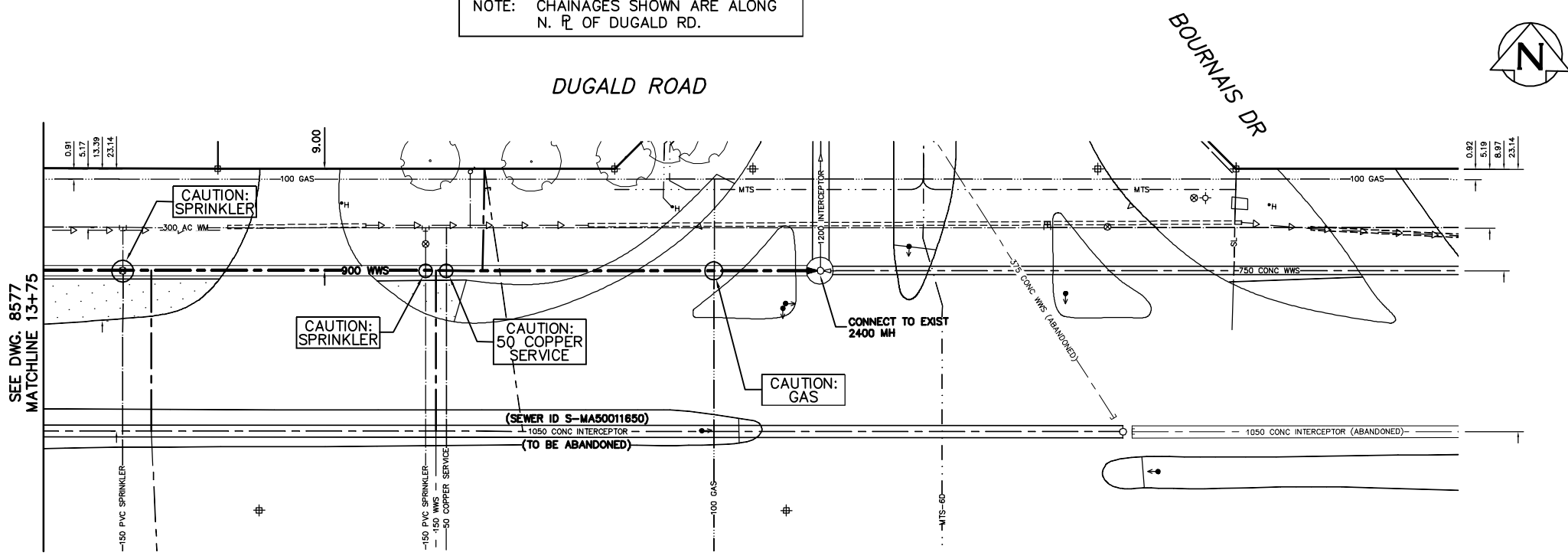
DETAIL "A"
MANHOLE APPROACH
NTS

NOTE: CHAINAGES SHOWN ARE ALONG N. R. OF DUGALD RD.

SEWER SERVICE INFORMATION		
ADDRESS	SIZE	R DIST JUNCTION TIE
1599 DUGALD RD	-	-
COMMERCIAL	54.04 W MH @ EL BOURNAIS	-
1655 DUGALD RD	-	-
COMMERCIAL	16.55 N MH @ EL BOURNAIS	-
1 BEGIN AVE	27.80 W/L BEGIN	-
COMMERCIAL	60.0 W MH @ EL BOURNAIS	-

SEWER JUNCTION INFORMATION FROM SEWER VIDEO INSPECTION SEWER ID S-MA50011650			
DISTANCE FROM MH ID S-MH50009399			
53.0 W	150#	NORTH	ON
85.8 W	150#	SOUTH	ON

- CONSTRUCTION NOTES:**
1. INSTALL SEWER BY TRENCHLESS METHODS.
 2. CONFIRM THE LOCATION OF ALL SEWER SERVICES.
 3. BACKFILL UNDER PAVEMENT, IN SIDEWALKS, & WITHIN 1.0 OF PAVEMENT TO BE CLASS 3.
 4. BACKFILL IN BOULEVARD TO BE CLASS 5 OR AS DIRECTED
 5. RENEW SEWER SERVICES TO R.
 6. INSTALL SEWER SERVICE RISERS TO ELEVATION WHERE MINIMUM SLOPE OF 1% IS MAINTAINED FOR ALL SERVICES.
 7. CONTRACTOR IS TO REPAIR GRANULAR SHOULDER IF DAMAGES OCCUR AS A RESULT OF CONSTRUCTION.



WARNING

IF POWER EQUIPMENT OR EXPLOSIVES ARE TO BE USED FOR EXCAVATION ON THIS PROJECT THE CONTRACTOR

- 1) NOTIFY THE GAS COMPANY OF THE PROPOSED LOCATION OF EXCAVATION.
- 2) TAKE PRECAUTION TO AVOID DAMAGE TO GAS COMPANY INSTALLATIONS.

SEE PROVINCIAL REGULATION 210/72 FOR DETAILS

200 WM	WATERMAIN	200 WM	SL, HYDRO	150 WM	WATERMAIN	150 WM
⊕	HYDRANT	⊕	MTS	+	HYDRANT	+
⊙	VALVE	⊙	TRAFFIC SIGNALS	⊗	VALVE	⊗
525 LDS	LAND DRAINAGE SEWER	525 LDS	GAS	300 LDS	LAND DRAINAGE SEWER	300 LDS
375 WWS	WASTEWATER SEWER	375 WWS	SURVEY BAR	250 WWS	WASTEWATER SEWER	250 WWS
○	MANHOLE	●	FENCE	⊕	PROFILE	⊕
□	CATCH BASIN	■	POLE - HYDRO, MTS	⌒	GROUND ABOVE PIPE	⌒
▽	CURB INLET	▽	CURB STOP	⊕	⊕ DITCH (NORTH & WEST)	⊕
⊕	JUNCTIONS	⊕	GUY ANCHOR	⊕	⊕ DITCH (SOUTH & EAST)	⊕
⊕	CULVERT	⊕	LIGHT STANDARD	⊕	GUTTER (NORTH & WEST)	⊕
⊕	ANODE	⊕	TREE	⊕	GUTTER (SOUTH & EAST)	⊕
EXISTING	LEGEND-PLAN	PROPOSED	EXISTING	LEGEND-PLAN	PROPOSED	EXISTING

LOCATION APPROVED UNDERGROUND STRUCTURES

SUPV. U/G STRUCTURES COMMITTEE DATE

NOTE: LOCATION OF UNDERGROUND STRUCTURES AS SHOWN ARE BASED ON THE BEST INFORMATION AVAILABLE BUT NO GUARANTEE IS GIVEN THAT ALL EXISTING UTILITIES ARE SHOWN OR THAT THE GIVEN LOCATIONS ARE EXACT. CONFIRMATION OF EXISTENCE AND EXACT LOCATION OF ALL SERVICES MUST BE OBTAINED FROM THE INDIVIDUAL UTILITIES BEFORE PROCEEDING WITH CONSTRUCTION.

B.M. ELEV. FIELD BOOK #:

POSTED TO LBS:

NO. REVISIONS DATE BY

CITY OF WINNIPEG
WATER AND WASTE
ENGINEERING DIVISION

DESIGNED BY: SGL/SC CHECKED BY: SC

DRAWN BY: C/JH APPROVED BY: KZ

HOR. SCALE: 1:250
VERTICAL: 1:50

RELEASED FOR CONSTRUCTION

DATE: 2008 08 14

ENGINEER'S SEAL

ORIGINAL SIGNED BY S.R.J. COURNOYER 08/08/14

BID OPPORTUNITY: 537-2008
FILENAME: 8578.dwg
PLOT DATE: 2008 08 14

THE CITY OF WINNIPEG
WATER AND WASTE DEPARTMENT

DUGALD SECONDARY SEWER REPLACEMENT - PHASE 3, CONTRACT 27

DUGALD ROAD
62.50 W OF BOURNAIS DRIVE TO BOURNAIS DRIVE

SHEET 10 OF 10
CITY DRAWING NUMBER
8578