

NOTE: CHAINAGES SHOWN ARE ALONG N. R. OF DUGALD RD.



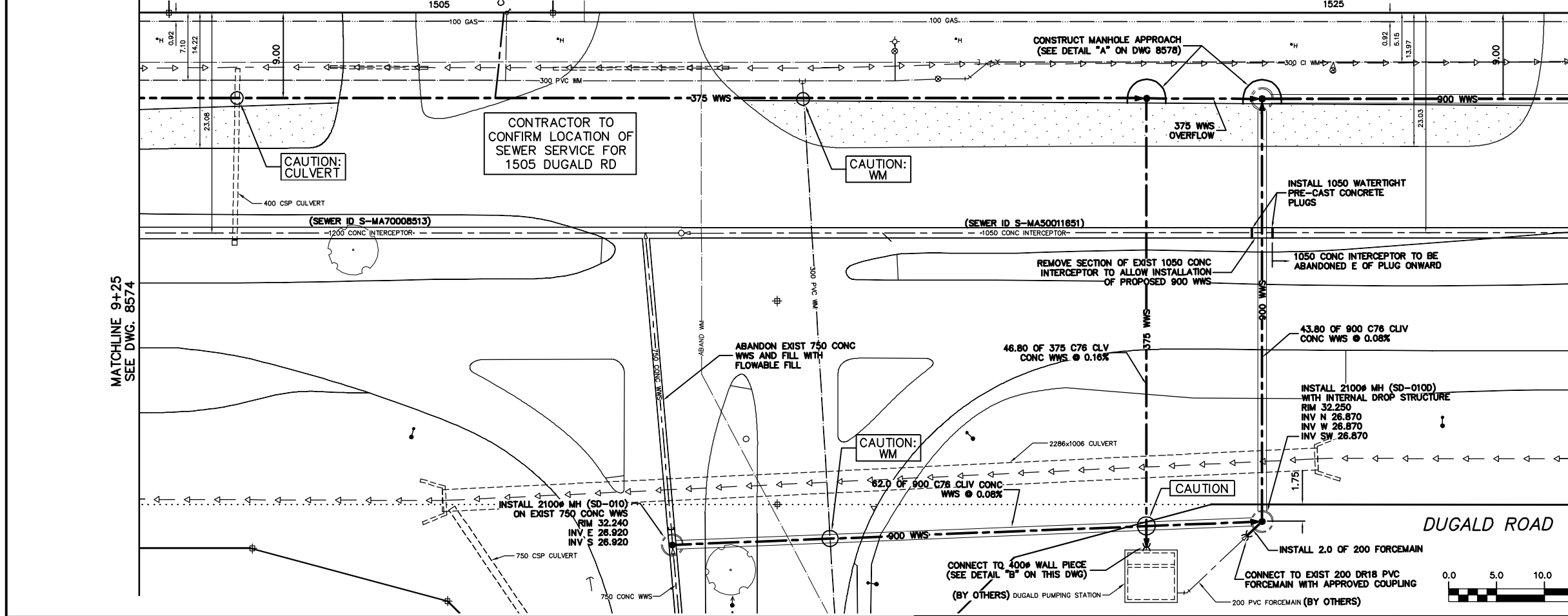
FOR CONSTRUCTION NOTES:
SEE DRAWING 8578

SEWER SERVICE INFORMATION			
ADDRESS	SIZE	R DIST	JUNCTION TIE
1501 DUGALD RD	COMMERCIAL	17.50 W OF EL	70.26 W MH @ MAZENOD
1501 DUGALD RD	COMMERCIAL	5.70 W OF EL	38.61 W MH @ MAZENOD
1505 DUGALD RD	COMMERCIAL	20.57 W MH @ MAZENOD	
1525 DUGALD RD	INDUSTRIAL	101.50 E MH @ MAZENOD	
15 MAZENOD RD	COMMERCIAL	54.40 E MH @ MAZENOD	

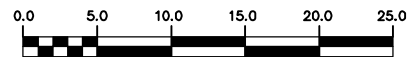
SEWER JUNCTION INFORMATION FROM SEWER VIDEO INSPECTION SEWER ID S-MA50011651			
DISTANCE FROM MH ID S-MH50009400			
223.6 W	150P	SOUTH	CN

METRIC
WHOLE NUMBERS INDICATE MILLIMETRES
DECIMALIZED NUMBERS INDICATE METRES

WARNING
IF POWER EQUIPMENT OR EXPLOSIVES ARE TO BE USED FOR EXCAVATION ON THIS PROJECT THE CONTRACTOR
1) NOTIFY THE GAS COMPANY OF THE PROPOSED LOCATION OF EXCAVATION.
2) TAKE PRECAUTION TO AVOID DAMAGE TO GAS COMPANY INSTALLATIONS.
SEE PROVINCIAL REGULATION 210/72 FOR DETAILS



DUGALD ROAD



200 WM	WATERMAIN	200 WM	SL, HYDRO	150 WM	WATERMAIN	150 WM
+	HYDRANT	+	MTS	+	HYDRANT	+
o	VALVE	o	TRAFFIC SIGNALS	o	VALVE	o
525 LDS	LAND DRAINAGE SEWER	525 LDS	GAS	50 GAS	300 LDS	LAND DRAINAGE SEWER
375 WWS	WASTEWATER SEWER	375 WWS	SURVEY BAR	250 WWS	250 WWS	WASTEWATER SEWER
o	MANHOLE	o	FENCE	x	o	PROFILE
o	CATCH BASIN	o	POLE - HYDRO, MTS	o	o	GROUND ABOVE PIPE
v	CURB INLET	v	CURB STOP	o	o	DITCH (NORTH & WEST)
o	JUNCTIONS	o	GUY ANCHOR	o	o	DITCH (SOUTH & EAST)
o	CULVERT	o	LIGHT STANDARD	o	o	GUTTER (NORTH & WEST)
o	ANODE	o	TREE	o	o	GUTTER (SOUTH & EAST)
o	EXISTING	o	LEGEND-PLAN	o	o	LEGEND-PROFILE
o	PROPOSED	o	PROPOSED	o	o	PROPOSED

LOCATION APPROVED UNDERGROUND STRUCTURES	
SUPV. U/G STRUCTURES COMMITTEE	DATE
NOTE:	LOCATION OF UNDERGROUND STRUCTURES AS SHOWN ARE BASED ON THE BEST INFORMATION AVAILABLE BUT NO GUARANTEE IS GIVEN THAT ALL EXISTING UTILITIES ARE SHOWN OR THAT THE GIVEN LOCATIONS ARE EXACT. CONFIRMATION OF EXISTENCE AND EXACT LOCATION OF ALL SERVICES MUST BE OBTAINED FROM THE INDIVIDUAL UTILITIES BEFORE PROCEEDING WITH CONSTRUCTION.
B.M. ELEV.	FIELD BOOK #:
POSTED TO LBS	
NO. REVISIONS	DATE BY

CITY OF WINNIPEG
WATER AND WASTE
ENGINEERING DIVISION

DESIGNED BY: SGL/SC
CHECKED BY: SC
DRAWN BY: C/JH
APPROVED BY: KZ

HOR. SCALE: 1:250
VERTICAL: 1:50

RELEASED FOR CONSTRUCTION

DATE: 2008 08 14

ENGINEER'S SEAL
ORIGINAL SIGNED BY S.R.J. COURNOYER 08/08/14

THE CITY OF WINNIPEG
WATER AND WASTE DEPARTMENT

DUGALD SECONDARY SEWER REPLACEMENT - PHASE 3, CONTRACT 27
DUGALD ROAD
46.70 W OF MAZENOD ROAD TO 72.50 E OF MAZENOD ROAD

SHEET 7 OF 10
CITY DRAWING NUMBER 8575

FILE NAME: 8575.dwg
PLOT DATE: 2008 08 14