

EXISTING WATER SERVICE LOCATION RECORDS				
ADDRESS	SIZE/TYPE	SHORT/LONG	CORP. LOCATION	COMMENTS
1072 INGERSOLL	NO RECORD	NO RECORD	NO RECORD	
* 1075 INGERSOLL	13 COPPER	0.3 N/SHL 10.6 S/SL YARWOOD CURB	0.3 S OF CS	
1085 INGERSOLL	13 LEAD	OPP SL OF DOOR 12.5 N/NPL YARWOOD	0.9 S OF CS	
1086 INGERSOLL	13 LEAD	2.6 N/SHL 5.0 N/NPL YARWOOD	1.1 S OF CS	
1088 INGERSOLL	13 LEAD	1.5 N/SHL 13.4 N/NPL YARWOOD	0.3 S OF CS	
1089 INGERSOLL	20 LEAD	1.1 N/NHL 25.5 N/NPL YARWOOD	0.9 N OF CS	
1090 INGERSOLL	13 LEAD	0.6 S/NL OF CELLAR 28.7 N/NPL YARWOOD	1.2 N OF CS	
1092 INGERSOLL	16 LEAD	0.3 S/NHL OF #1094 39.0 N/NPL YARWOOD	1.2 S OF CS	DOUBLE SERVICE WITH HSE #1094
1093 INGERSOLL	20 LEAD	2.3 S/NHL 32.0 N/NPL YARWOOD	1.2 S OF CS	
1094 INGERSOLL	16 LEAD	OPP SHL 39.0 N/NPL YARWOOD	1.2 S OF CS	DOUBLE SERVICE WITH HSE #1092
1095 INGERSOLL	20 LEAD	3.0 N/SHL 40.4 N/NPL YARWOOD	OPP CS	
1096 INGERSOLL	16 LEAD	0.3 S/SHL HSE #1098 53.3 N/NPL YARWOOD	OPP CS	DOUBLE SERVICE WITH HSE #1098
1097 INGERSOLL	20 LEAD	2.0 S/NHL 53.6 N/NPL YARWOOD	OPP CS	
1098 INGERSOLL	16 LEAD	0.3 S/SHL HSE #1098 53.3 N/NPL YARWOOD	OPP CS	DOUBLE SERVICE WITH HSE #1096
1099 INGERSOLL	20 LEAD	2.1 S/NHL 65.1 N/NPL YARWOOD	0.3 S OF CS	
1101 INGERSOLL	20 LEAD	OPP NHL 72.8 S/NPL HSE #1127	0.3 S OF CS	
1103 INGERSOLL	20 LEAD	2.1 S/NHL 65.1 S/NPL HSE #1127	OPP CS	
1104 INGERSOLL	20 COPPER	2.1 S/NHL 71.6 N/NPL YARWOOD	OPP CS	
* 1108 INGERSOLL	20 COPPER	OPP NL OF HSE #1108 69.5 S/NPL HSE #1127	0.9 N OF CS	DOUBLE SERVICE WITH HSE #1110
* 1110 INGERSOLL	20 COPPER	OPP NL OF HSE #1108 69.5 S/NPL HSE #1127	0.9 N OF CS	DOUBLE SERVICE WITH HSE #1108
1111 INGERSOLL	20 COPPER	1.8 S/NHL 55.2 S 1ST HYD S NOTRE DAME	1.2 S OF CS	
1112 INGERSOLL	20 COPPER	1.5 S/NHL	OPP CS	REVERSE TAPPED
1113 INGERSOLL	20 COPPER	2.4 S/NHL 48.9 S/SPL GRUNDY	0.3 S OF CS	
1116 INGERSOLL	20 COPPER	2.3 N/SHL 43.0 S/SPL GRUNDY	1.2 N OF CS	

* - INFORMATION FROM EXISTING SERVICE RECORDS

NOTE: CHAINAGES SHOWN ARE ALONG EAST PL OF INGERSOLL ST.

EXISTING SEWER SERVICE LOCATION RECORDS		
ADDRESS	SIZE/TYPE	SERVICE LOCATION AT PL
NO RECORD	NO RECORD	NO RECORD

- CONSTRUCTION NOTES:**
1. EXPOSE EXISTING WATERMAIN & CONFIRM INVERTS PRIOR TO CONSTRUCTION.
 2. CONFIRM LOCATION OF ALL SERVICES IN THE FIELD.
 3. INSTALL WATERMAIN BY TRENCHLESS METHODS.
 4. TRENCHES & EXCAVATIONS WITHIN 1 METRE OF A PAVED AREA INCLUDING SIDEWALKS SHALL BE CLASS 3 BACKFILL.
 5. ALL MATERIALS SHALL CONFORM TO THE CITY OF WINNIPEG STANDARD CONSTRUCTION SPECIFICATIONS.
 6. MINIMUM COVER TO TOP OF WATERMAIN SHALL BE 2.4 m.
 7. REPLACE ALL EXISTING LEAD SERVICES FROM PROPOSED WATERMAIN TO PL.
 8. NOTIFY ALL RESIDENTS AND BUSINESSES 24 HOURS IN ADVANCE OF ANY WATER SHUTDOWNS OR DISRUPTION OF SERVICE.

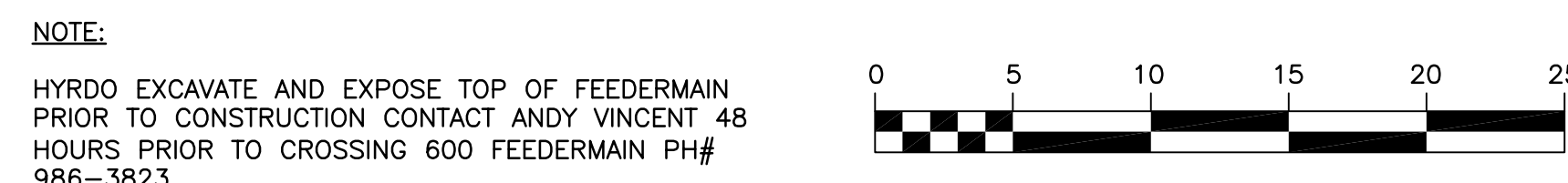
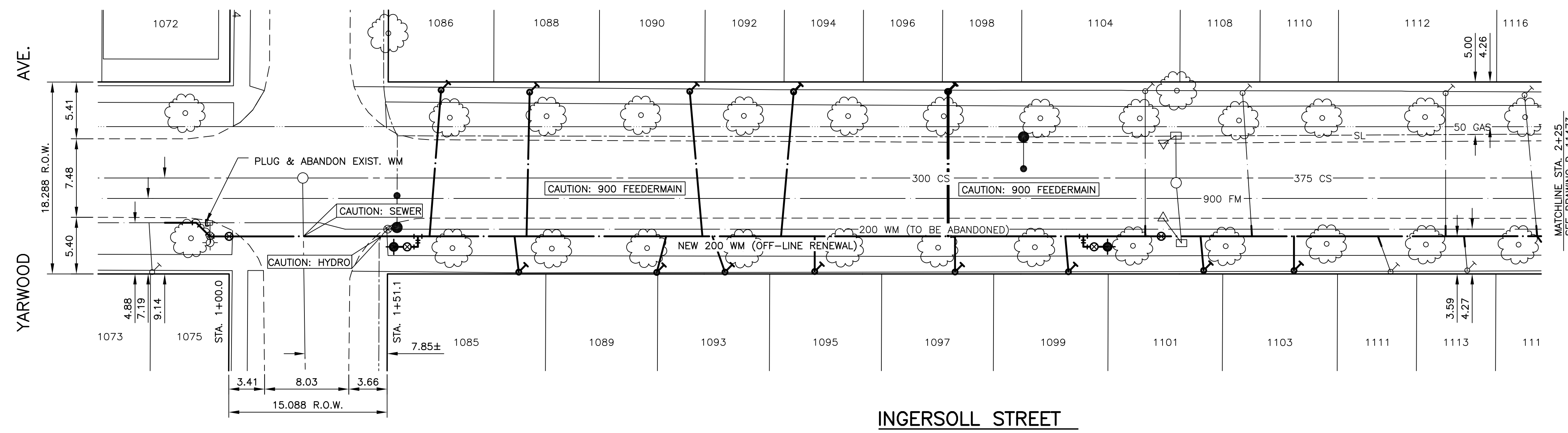
WARNING

IF POWER EQUIPMENT OR EXPLOSIVES ARE TO BE USED FOR EXCAVATION ON THIS PROJECT THE CONTRACTOR MUST:

1. NOTIFY THE GAS COMPANY OF THE PROPOSED LOCATION OF EXCAVATION.
2. TAKE PRECAUTION TO AVOID DAMAGE TO GAS COMPANY INSTALLATIONS SEE PROVINCIAL REGULATION 210/72 FOR DETAILS

METRIC

WHOLE NUMBERS INDICATE MILLIMETRES
DECIMALIZED NUMBERS INDICATE METRES

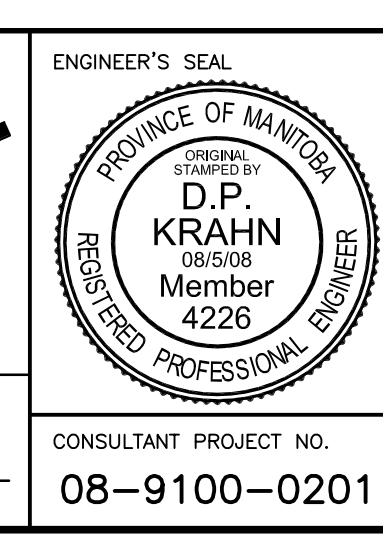


EXISTING	LEGEND-PLAN	PROPOSED	EXISTING	LEGEND-PLAN	PROPOSED	EXISTING	LEGEND-PROFILE	PROPOSED
150 mm W.M.	WATERMAIN	150 mm W.M.	HYDRO	M.T.S.	150 mm W.M.	WATERMAIN	150 mm W.M.	WATERMAIN
Hydrant	HYDRANT	Valve	CONCRETE	CONCRETE	Valve	VALVE	VALVE	VALVE
300 mm L.D.S.	LAND DRAINAGE SEWER	300 mm L.D.S.	ASPHALT	PROPERTY LINE	300 mm L.D.S.	LAND DRAINAGE SEWER	300 mm L.D.S.	LAND DRAINAGE SEWER
250 mm W.W.S.	WASTE WATER SEWER	250 mm W.W.S.	SURVEY BAR	SURVEY BAR	250 mm W.W.S.	WASTE WATER SEWER	250 mm W.W.S.	WASTE WATER SEWER
Manhole	MANHOLE	Manhole	SERVICE VALVE	SERVICE VALVE	Manhole	MANHOLE	MANHOLE	MANHOLE
Catch Basin	CATCH BASIN	Catch Basin	TREE	TREE	Catch Basin	CATCH BASIN	CATCH BASIN	CATCH BASIN
Curb Inlet	CURB INLET	Curb Inlet	LIGHT STANDARD	LIGHT STANDARD	Curb Inlet	CURB INLET	CURB INLET	CURB INLET
Junctions	JUNCTIONS	Junctions	FENCE	FENCE	Junctions	JUNCTIONS	JUNCTIONS	JUNCTIONS
Culvert	CULVERT	Culvert	GUY ANCHOR	GUY ANCHOR	Culvert	CULVERT	CULVERT	CULVERT
Gas	GAS	Gas			Gas	GAS	GAS	GAS

UNDERGROUND STRUCTURES	
SUPPLY U/G STRUCTURES	DATE

NOTE:			
LOCATION OF UNDERGROUND STRUCTURES AS SHOWN ARE BASED ON THE BEST INFORMATION AVAILABLE, BUT NO GUARANTEE IS GIVEN THAT ALL EXISTING UTILITIES ARE SHOWN OR THAT THE GIVEN LOCATIONS ARE EXACT. CONFIRMATION OF EXISTENCE AND EXACT LOCATION OF ALL SERVICES MUST BE OBTAINED FROM THE INDIVIDUAL UTILITIES BEFORE PROCEEDING WITH CONSTRUCTION.			
2	ISSUED FOR TENDER	08-5-08	S.C.C.
1	ISSUED FOR FINAL REVIEW	07-22-08	S.C.C.
NO.	REVISIONS	DATE	BY

DESIGNED BY	C.L.P.
DRAWN BY	C.L.P.
CHECKED BY	S.C.C.
APPROVED BY	ORIGINAL SIGNED BY D.P.K.
HOR. SCALE	1 : 250
VERTICAL	1 : 50
DATE	JULY 21, 2008



THE CITY OF WINNIPEG
WATER AND WASTE DEPARTMENT

2008 WATERMAIN RENEWALS, SEWER RENEWALS AND REPAIRS, CONTRACT 19

INGERSOLL STREET
YARWOOD AVENUE TO GRUNDY AVENUE

CITY DRAWING NUMBER: D-11472
SHEET 1 OF 27
BID OPPORTUNITY: 525-2008

CONSULTANT PROJECT NO.: 08-9100-0201