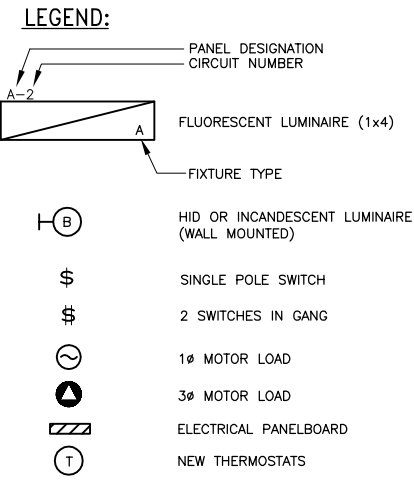
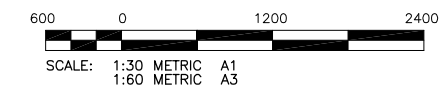


- NOTES:**
1. INTERIOR LIGHTS SHOWN PRIMARILY FOR QUANTITY. FIXTURES SHALL BE MOUNTED TO PROVIDE MAXIMUM CLEARANCE AND LIGHT DISTRIBUTION.
 2. FOR DETAILED LIGHTING LOCATIONS, SEE ARCHITECTURAL ELEVATIONS A3.0
 3. PROVIDE PHOTOCELL AND CONTACTOR TO CONTROL EXTERIOR LIGHTS.
 4. EXISTING DISTRIBUTION PANEL FOR ADJACENT PARKING LOT SHALL BE REMOVED, REPLACED AND RE-FED. COORDINATE WITH MANITOBA HYDRO FOR A NEW UNDERGROUND 200A SERVICE. PROVIDE A VANDAL RESISTANT METER ENCLOSURE AND A WATERPROOF VANDAL RESISTANT PADLOCKABLE 24cct 1 ϕ DISTRIBUTION PANEL. REPAIR UNDERGROUND FEEDERS. MATCH EXISTING BREAKERS.
 5. COORDINATE WITH CITY TO HAVE A PUMP RUN CONTACT FOR INTERLOCKING THE EXHAUST FANS.
 6. SF-1 CONTROLLED FROM A MANUAL TWO SPEED STARTER SWITCH AT THE DOORWAY.



NOTE 4

METRIC
WHOLE NUMBERS INDICATE MILLIMETRES
DECIMALIZED NUMBERS INDICATE METRES



File Name: P:\Projects\2006\06-0107-15\Elect\Draws\06-0107-15-E1.dwg - Tab: E1 Plotted By: mprevoost 06/20/2008 [Fri 11:26am]

APEGM
Certificate of Authorization
KGS Group
No. 245 Date: 2008-06-19

B.M. XX-XXX ELEV. XXX.XXX	KGS GROUP		ENGINEER'S SEAL
	CONSULTING ENGINEERS & PROJECT MANAGERS		ORIGINAL DRAWING SIGNED BY A. PAWLKIEWICH 19/06/08
	WINNIPEG (204) 896-1209 THUNDER BAY (807) 345-2233		
	DESIGNED BY AP	CHECKED BY AP	CONSULTANT DRAWING NO. 06-0107-15-E1
	DRAWN BY GCN	APPROVED BY	
	SCALE: AS NOTED		SHEET 01 OF 04 CAD FILE DRAWING NUMBER 06-0107-15-E1 CITY DRAWING NUMBER LD-5053
0 ISSUED FOR CONSTRUCTION 19/06/08 AP	DATE 17/01/08	RELEASED FOR CONSTRUCTION: DATE	
NO. REVISIONS	DATE	BY	

THE CITY OF WINNIPEG
WATER & WASTE DEPARTMENT

BANNATYNE FLOOD PUMPING STATION
BUILDING UPGRADE

ELECTRICAL PLAN