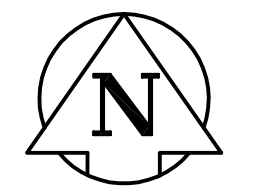
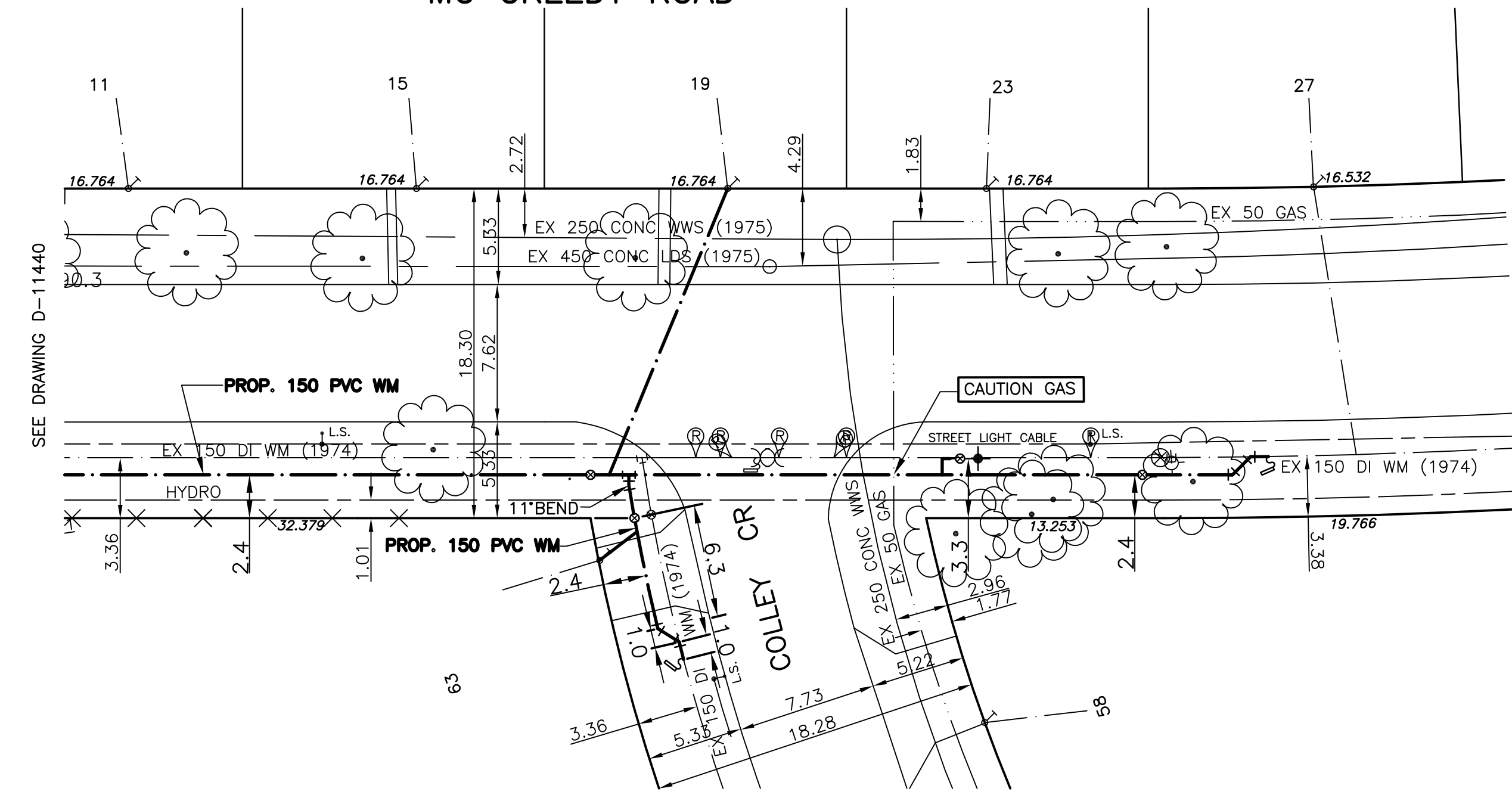


CHAINAGE ALONG SOUTH PROPERTY LINE OF MC CREEDY ROAD

MC CREEDY ROAD



ADDRESS & NATURE OF SERVICE	SIZE	TYPE	SHORT & LONG MEASUREMENT	CORP	REMARKS
3 McCreedy Road	34	Copper	4.4 N/SHL		CORP LOC-30' N VLV-MCCREEDY N/L TU-PELO
Residential			8.5 FROM HOUSE FRONT		
7 McCreedy Road	34	Copper	6.1 E OF WL OF HOUSE		
Residential			8.4 FROM HOUSE FRONT		
264 Tu Pelo Avenue	34	Copper	OPP E/L HOUSE		SEWER JUCT: 52.8' S OF MH ON NE CORNER OF MCCREEDY & TU PELO
Residential			0.3 ST/LINE		
268 Tu Pelo Avenue	34	Copper	4.7 E W/L HOUSE		
Residential			9.9 FROM HOUSE		
272 Tu Pelo Avenue	34	Copper	5.2 E W/L HOUSE		CORP: 89.6' N OF HYD AT FRT #264
Residential			0.3 ST LINE		SEWER JUCT: 258

- NOTES:**
- ALL GATE VALVES ARE COUNTER-CLOCKWISE TO OPEN WITH A BLACK OPERATING NUT.
  - WATERMAIN TO BE INSTALLED BY TRENCHLESS METHODS.
  - BACKFILL IS CLASS 5 WITHIN BOULEVARD AND CLASS 3 WHEN WITHIN PAVEMENT/SIDEWALK OR WHEN WITHIN 1.0m OF PAVEMENT OR SIDEWALK.
  - WATER SERVICES ARE 19mm UNLESS OTHERWISE NOTED.
  - MINIMUM COVER TO TOP OF WATERMAIN SHALL BE 2.4m.
  - LOCATION OF ALL SERVICES TO BE CONFIRMED IN FIELD.
  - EXPOSE EXISTING WATERMAIN TO CONFIRM DEPTH PRIOR TO CONSTRUCTION.
  - ALL LEAD SERVICES TO BE RENEWED TO PROPERTY LINE.
  - SERVICES TO BE RENEWED SHALL BE REPLACED FROM WATERMAIN TO PROPERTY LINE. ALL OTHERS TO BE RECONNECTED.



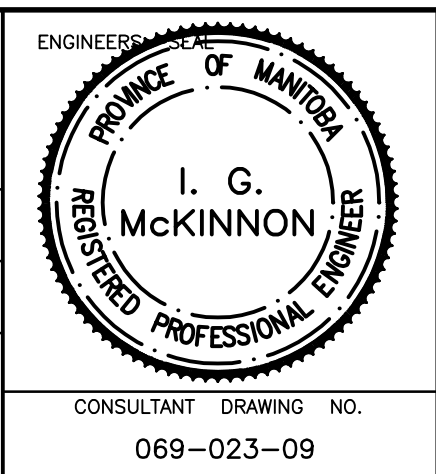
METRIC  
WHOLE NUMBERS INDICATE MILLIMETRES  
DECIMALIZED NUMBERS INDICATE METRES

EXISTING	LEGEND - PLAN	PROPOSED	EXISTING	LEGEND - PLAN	PROPOSED	EXISTING	LEGEND - PROFILE	PROPOSED
—	WATERMAIN	—	◁	REDUCER	◁	150mm W.M.	—	WATERMAIN
⊕	HYDRANT	⊕	⊔	PLUG	⊔	VALVE	—	VALVE
⊕	VALVE	⊕	⊔	TRAFFIC SIGNAL	⊔	300mm L.D.S.	—	LAND DRAINAGE SEWER
—	LAND DRAINAGE SEWER	—	—	GAS	—	250mm W.W.S.	—	WASTE WATER SEWER
—	WASTE WATER SEWER	—	—	HYDRO	—	JUNCTIONS	—	JUNCTIONS
○	MANHOLE	●	—	M.T.S.	—	CULVERT	—	CULVERT
□	CATCH BASIN	■	⊕	SURVEY BAR	⊕			
□	CURB INLET	■	⊕	CURB STOP	⊕			
—	TEE	—	—	C.B. LEAD	—			
—	BEND	—	—	TREE	—			
—	ANODE	—	—	LAMP STANDARD	—			

LOCATION APPROVED		SUPV. U/G STRUCTURES DATE COMMITTEE	
NOTE: LOCATION OF UNDERGROUND STRUCTURES AS SHOWN ARE BASED ON THE BEST INFORMATION AVAILABLE BUT NO GUARANTEE IS GIVEN THAT ALL EXISTING UTILITIES ARE SHOWN OR THAT THE GIVEN LOCATIONS ARE EXACT. CONFIRMATION OF EXISTENCE AND EXACT LOCATION OF ALL SERVICES MUST BE OBTAINED FROM THE INDIVIDUAL UTILITIES BEFORE PROCEEDING WITH CONSTRUCTION.			
B.M. ELEV.	11-013	DATE	JUNE 08
	231.245	BY	DJ
NO.	1	REVISIONS	BID OPPORTUNITY 478-2008
		DATE	JUNE 08

**GENIVAR**  
200 TACHE AVENUE WINNIPEG, MANITOBA R2H 1A7  
PH: (204)-233-2113 FAX: (204)-233-2080

DESIGNED BY: DJ	CHECKED BY: SM
DRAWN BY: DJ	APPROVED BY: IMcK
HOR. SCALE: 1:250	RELEASED FOR CONSTRUCTION: K. ZUREK P.ENG.
VERT. SCALE: 1:50	ORIGINALLY SIGNED BY: P.ENG.
DATE: MAY 08	DATE: JUNE 24 2008



**THE CITY OF WINNIPEG**  
WATER AND WASTE DEPARTMENT

**2008 CAPITAL WORKS**  
**WATERMAIN RENEWALS**  
**MC CREEDY ROAD**  
40M WEST OF TU-PELO AVENUE TO COLLEY CRESCENT

SHEET 2 OF 2  
CITY DRAWING NO. D-11441

CONSULTANT DRAWING NO. 069-023-09