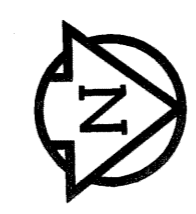
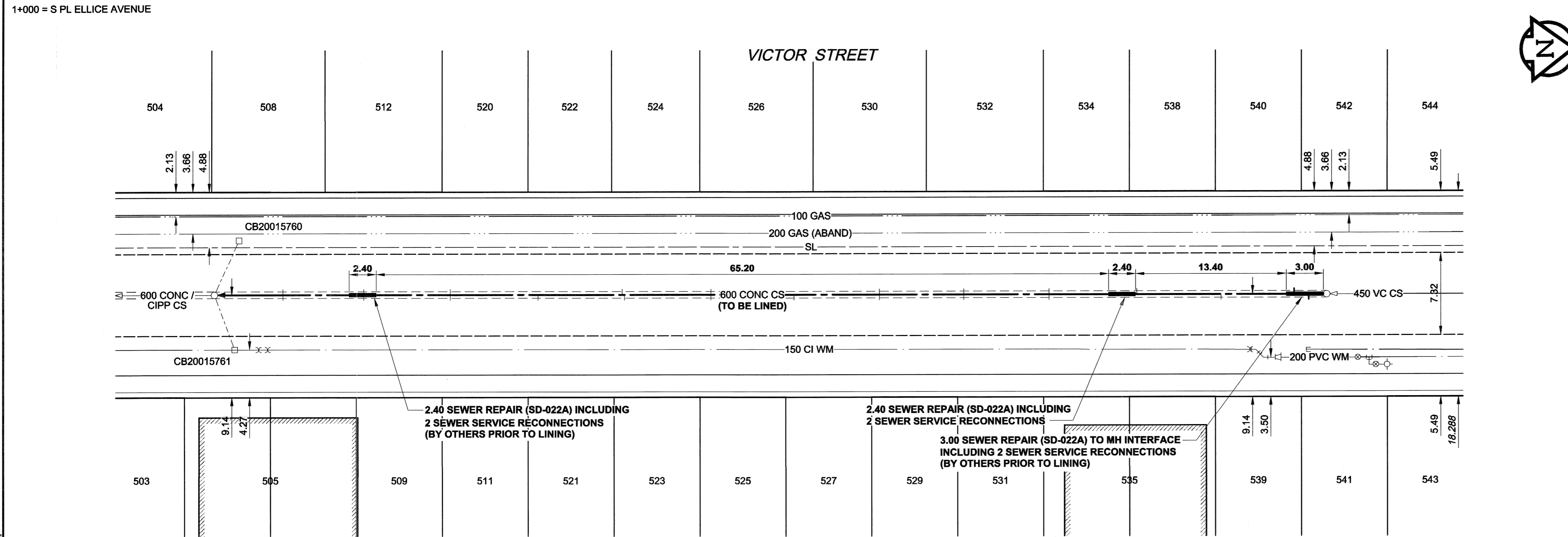
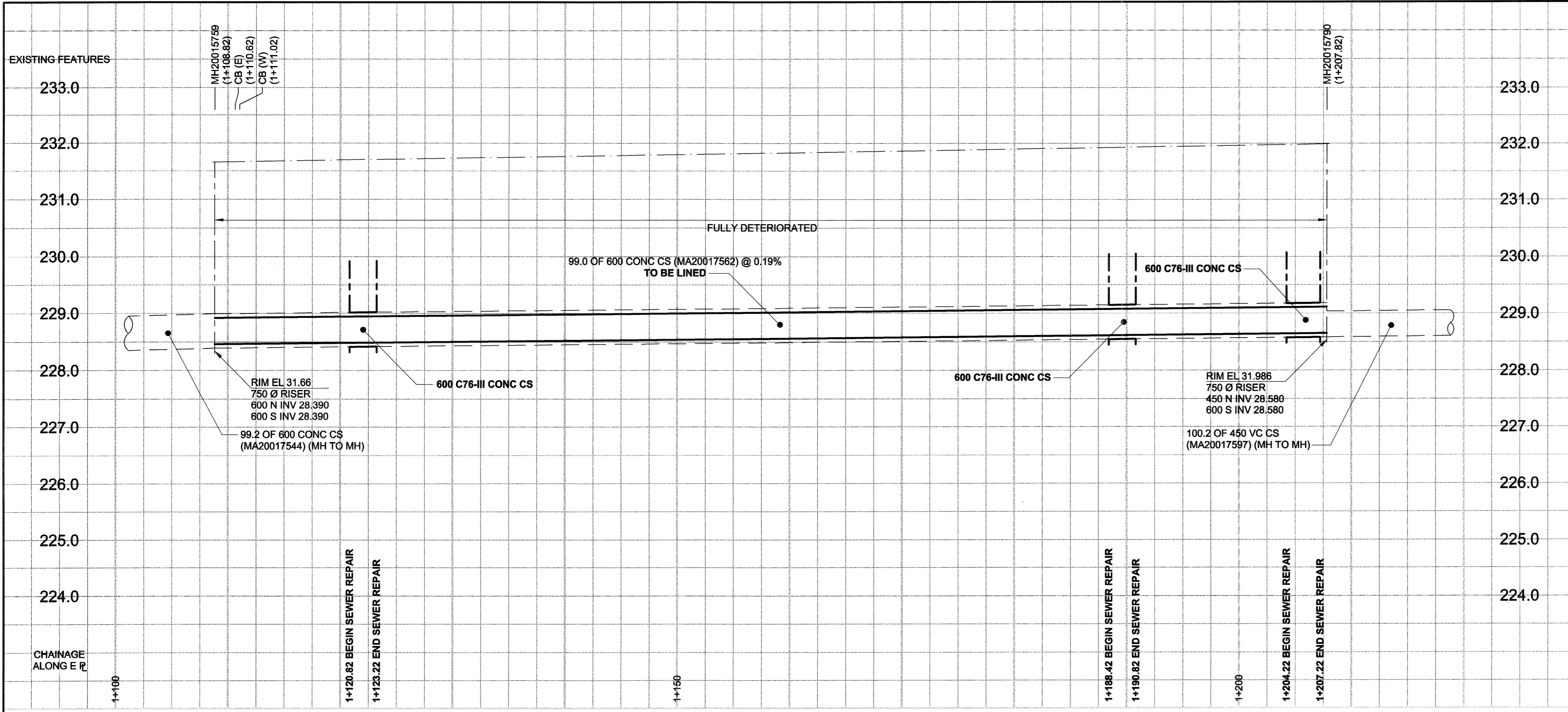


D SIZE 22" x 34" (559mm x 864mm)

PL OT: 08/07/08 10:49:16 AM

UMA REVIEW DRFT CHK



**SEWER JUNCTION INFORMATION**

REF. MH	DIST FROM REF. MH	SIZE	CLOCK AT
MH-20015790	1.60	1500	09
MH-20015790	2.90	1500	03
MH-20015790	9.40	1500	09
MH-20015790	16.90	1500	03
MH-20015790	24.70	1500	03
MH-20015790	24.70	1500	09
MH-20015790	32.30	1500	03
MH-20015790	32.30	1500	09
MH-20015790	39.80	1500	03
MH-20015790	39.80	1500	09
MH-20015790	47.40	1500	10
MH-20015790	54.80	1500	03
MH-20015790	54.80	1500	09
MH-20015790	62.50	1500	09
MH-20015790	62.70	1500	03
MH-20015790	70.20	1500	09
MH-20015790	78.00	1500	03
MH-20015790	78.00	1500	10
MH-20015790	85.70	1500	03
MH-20015790	85.70	1500	09
MH-20015790	92.00	1500	03
MH-20015790	92.90	1500	09

\*JUNCTION INFORMATION FROM VIDEO INSPECTION

**WARNING**  
 IF POWER EQUIPMENT OR EXPLOSIVES ARE TO BE USED FOR EXCAVATION ON THIS PROJECT, THE CONTRACTOR MUST:  
 1) NOTIFY THE GAS COMPANY OF THE PROPOSED LOCATION OF EXCAVATION.  
 2) TAKE PRECAUTION TO AVOID DAMAGE TO GAS COMPANY INSTALLATIONS.  
 SEE PROVINCIAL REGULATION 140/92 FOR DETAILS

**METRIC**  
 WHOLE NUMBERS INDICATE MILLIMETRES  
 DECIMALIZED NUMBERS INDICATE METRES

EXISTING	LEGEND - PLAN	NEW	EXISTING	LEGEND - PLAN	NEW	EXISTING	LEGEND - PROFILE	NEW
150 WM	WATERMAIN	150 WM	150 WM	WATERMAIN	150 WM	300 LDS	LAND DRAINAGE SEWER	300 LDS
300 LDS	LAND DRAINAGE SEWER	300 LDS	250 WWS	WASTE WATER SEWER	250 WWS	MANHOLE	MANHOLE	MANHOLE
250 WWS	WASTE WATER SEWER	250 WWS	CATCH BASIN	CATCH BASIN	CATCH BASIN	CURB INLET	CURB INLET	CURB INLET
PIPE ABANDONMENTS	PIPE ABANDONMENTS	PIPE ABANDONMENTS	SURVEY BAR	SURVEY BAR	SURVEY BAR	CURB STOP	CURB STOP	CURB STOP
REDUCER	REDUCER	REDUCER	COUPLING	COUPLING	COUPLING	ANODE	ANODE	ANODE
HYDRANT	HYDRANT	HYDRANT	VALVE	VALVE	VALVE	LAND DRAINAGE SEWER	LAND DRAINAGE SEWER	LAND DRAINAGE SEWER
WASTE WATER SEWER	WASTE WATER SEWER	WASTE WATER SEWER	MANHOLE	MANHOLE	MANHOLE	WASTE WATER SEWER	WASTE WATER SEWER	WASTE WATER SEWER
HYDRO	HYDRO	HYDRO	MTS	MTS	MTS	PAVEMENT CROWN	PAVEMENT CROWN	PAVEMENT CROWN
TESTHOLE	TESTHOLE	TESTHOLE	GAS	GAS	GAS	N/W PROPERTY LINE	N/W PROPERTY LINE	N/W PROPERTY LINE
LAMP STANDARD	LAMP STANDARD	LAMP STANDARD	TREE	TREE	TREE	S/E PROPERTY LINE	S/E PROPERTY LINE	S/E PROPERTY LINE
TREE	TREE	TREE				N/W GUTTER	N/W GUTTER	N/W GUTTER
						S/E GUTTER	S/E GUTTER	S/E GUTTER

**LOCATION APPROVED**  
 UNDERGROUND STRUCTURES

DATE: 08/07/08

NOTE: LOCATION OF UNDERGROUND STRUCTURES AS SHOWN ARE BASED ON THE BEST INFORMATION AVAILABLE. BUT NO GUARANTEE IS GIVEN THAT ALL EXISTING UTILITIES ARE SHOWN OR THAT THE GIVEN LOCATIONS ARE EXACT. CONFIRMATION OF EXISTENCE AND EXACT LOCATION OF ALL SERVICES MUST BE OBTAINED FROM THE INDIVIDUAL UTILITIES BEFORE PROCEEDING WITH CONSTRUCTION.

NO.	REVISIONS	DATE	BY
0	ISSUED FOR CONSTRUCTION	08/07/08	KMB

DESIGNED BY	ALD / MJR	CHECKED BY	DATE
APPROVED BY <td>KMB</td> <td>DATE</td> <td>08/07/08</td>	KMB	DATE	08/07/08

**UMA | AECOM**

© 2006 UMA ENGINEERING LTD. ALL RIGHTS RESERVED.

DESIGNED BY: ALD / MJR  
 CHECKED BY: [Signature]  
 APPROVED BY: KMB  
 DATE: 08/07/08

**UMA Engineering Ltd. (MB)**  
 No. 256 Date: 08/07/08

**PROFESSIONAL'S SEAL**  
 C. C. MACEY  
 REGISTERED ENGINEER

**THE CITY OF WINNIPEG**  
 WATER AND WASTE DEPARTMENT

**2008 COMBINED SEWER RENEWALS**  
 BY CIPP LINING  
 CONTRACT 15

VICTOR STREET  
 80m N OF ELLICE AVENUE  
 178m S OF SARGENT AVENUE

SHEET 18 OF 19  
 CITY DRAWING NUMBER  
**8597**

BID OPPORTUNITY NO. 467-2008