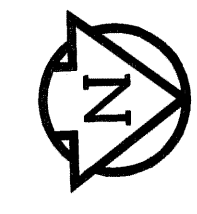
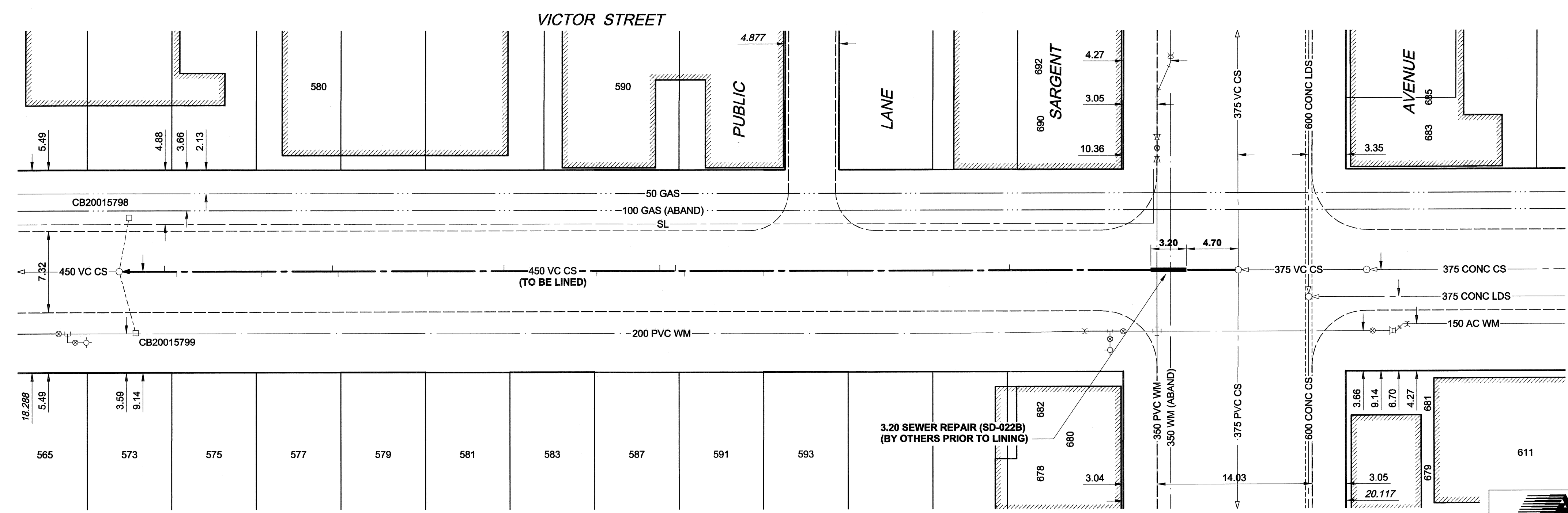
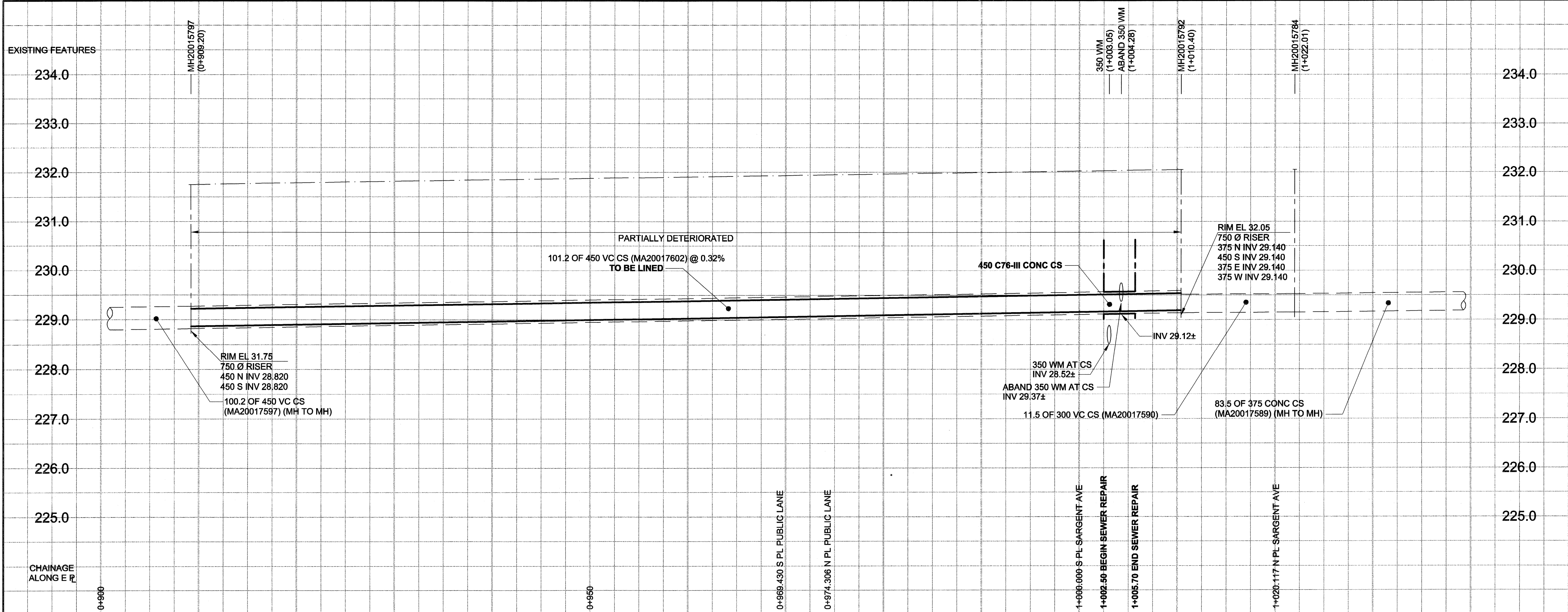


D SIZE 22" x 34" (559mm x 864mm)

PLOT: 08/07/07 3:20:57 PM

UMA REVIEW DRFT CHK



SEWER JUNCTION INFORMATION

REF. MH	DIST FROM	SIZE	CLOCK AT
MH20015792	20.70	1500	03
MH20015792	27.50	1500	08
MH20015792	35.30	1500	10
MH20015792	42.90	1500	10
MH20015792	50.10	1500	10
MH20015792	50.90	1500	02
MH20015792	52.30	1500	03
MH20015792	56.00	1500	09
MH20015792	66.40	1500	03
MH20015792	73.30	1500	10
MH20015792	81.40	1500	09
MH20015792	81.90	1500	02
MH20015792	88.30	1500	10
MH20015792	96.00	1500	10
MH20015792	97.10	1500	03

*JUNCTION INFORMATION FROM VIDEO INSPECTION

WARNING
 IF POWER EQUIPMENT OR EXPLOSIVES ARE TO BE USED FOR EXCAVATION ON THIS PROJECT, THE CONTRACTOR MUST:
 1) NOTIFY THE GAS COMPANY OF THE PROPOSED LOCATION OF EXCAVATION.
 2) TAKE PRECAUTION TO AVOID DAMAGE TO GAS COMPANY INSTALLATIONS.
 SEE PROVINCIAL REGULATION 140/92 FOR DETAILS

METRIC
 WHOLE NUMBERS INDICATE MILLIMETRES
 DECIMALIZED NUMBERS INDICATE METRES

EXISTING	LEGEND - PLAN	NEW	EXISTING	LEGEND - PLAN	NEW	EXISTING	LEGEND - PROFILE	NEW
150 WM	WATERMAIN	150 WM	150 WM	WATERMAIN	150 WM	300 LDS	LAND DRAINAGE SEWER	300 LDS
250 WWS	WASTE WATER SEWER	250 WWS	250 WWS	WASTE WATER SEWER	250 WWS	300 LDS	LAND DRAINAGE SEWER	300 LDS
300 LDS	LAND DRAINAGE SEWER	300 LDS	300 LDS	LAND DRAINAGE SEWER	300 LDS	300 LDS	LAND DRAINAGE SEWER	300 LDS
250 WWS	WASTE WATER SEWER	250 WWS	250 WWS	WASTE WATER SEWER	250 WWS	300 LDS	LAND DRAINAGE SEWER	300 LDS
○	MANHOLE	●	○	MANHOLE	●	○	MANHOLE	●
□	CATCH BASIN	■	□	CATCH BASIN	■	○	MANHOLE	●
△	CURB INLET	▲	△	CURB INLET	▲	○	MANHOLE	●
▭	CULVERT	▭	▭	CULVERT	▭	○	MANHOLE	●
+	PIPE ABANDONMENTS	+	+	PIPE ABANDONMENTS	+	○	MANHOLE	●
+	SURVEY BAR	+	+	SURVEY BAR	+	○	MANHOLE	●
+	PIPE ABANDONMENTS	+	+	PIPE ABANDONMENTS	+	○	MANHOLE	●
+	SURVEY BAR	+	+	SURVEY BAR	+	○	MANHOLE	●

LOCATION APPROVED
 UNDERGROUND STRUCTURES

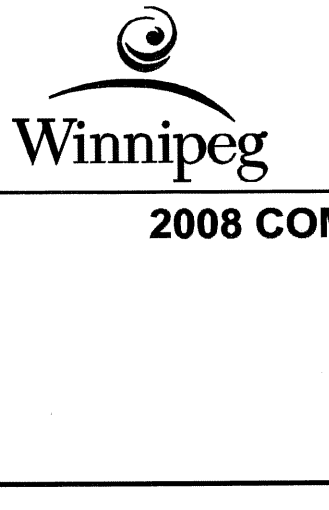
SUPR. U/G STRUCTURES DATE COMMITTEE

NOTE:
 LOCATION OF UNDERGROUND STRUCTURES AS SHOWN ARE BASED ON THE BEST INFORMATION AVAILABLE. BUT NO GUARANTEE IS GIVEN THAT ALL EXISTING UTILITIES ARE SHOWN OR THAT THE GIVEN LOCATIONS ARE EXACT. CONFIRMATION OF EXISTENCE AND EXACT LOCATION OF ALL SERVICES MUST BE OBTAINED FROM THE INDIVIDUAL UTILITIES BEFORE PROCEEDING WITH CONSTRUCTION.

NO.	REVISIONS	DATE	BY
0	ISSUED FOR CONSTRUCTION	08/07/08	KMB
		YYMMDD	

DESIGNED BY	ALD / MJR	CHECKED BY	DATE
DRAWN BY	KMB	APPROVED BY	08/07/08
HOR. SCALE	1:250	RELEASED FOR CONSTRUCTION	08/07/08
VERT. SCALE	1:50	DATE	08/07/08

UMA AECOM
 Certificate of Authorization
 UMA Engineering Ltd. (MB)
 No. 256 Date: 08/07/08



THE CITY OF WINNIPEG
WATER AND WASTE DEPARTMENT

2008 COMBINED SEWER RENEWALS
BY CIPP LINING
CONTRACT 15
VICTOR STREET
 279m N OF ELLICE AVENUE TO SARGENT AVENUE

SHEET 17 OF 19
 CITY DRAWING NUMBER
8596
 REV 0

BID OPPORTUNITY NO. 467-2008