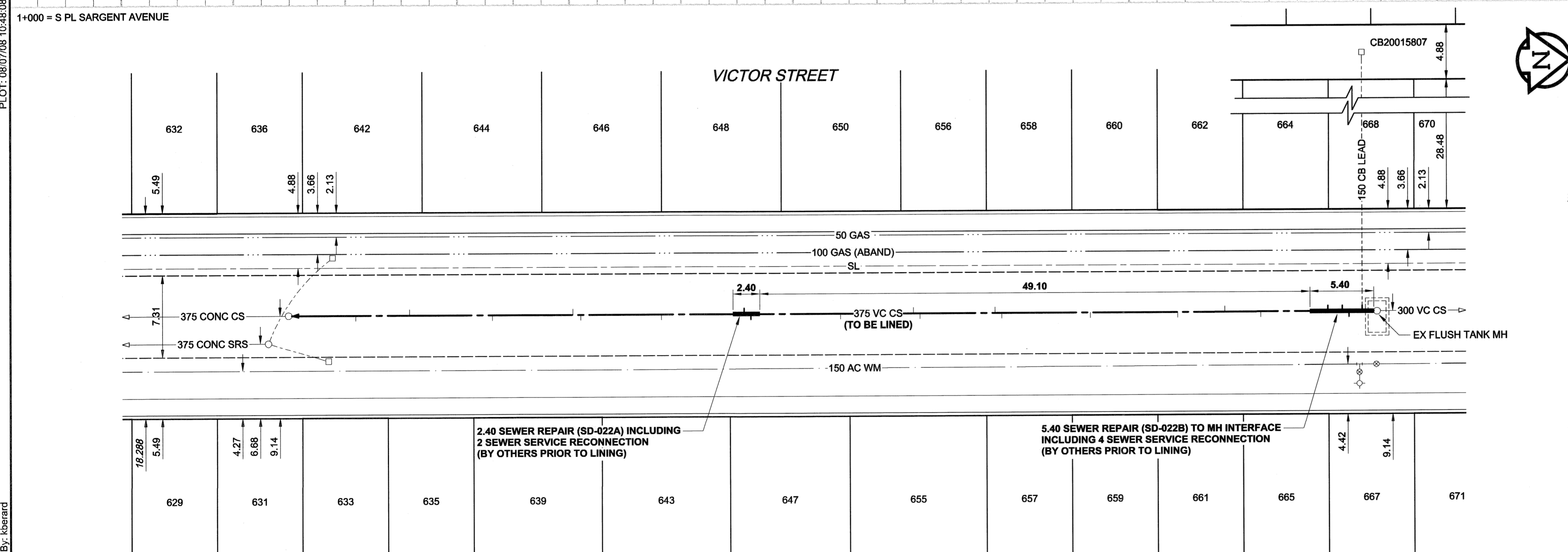
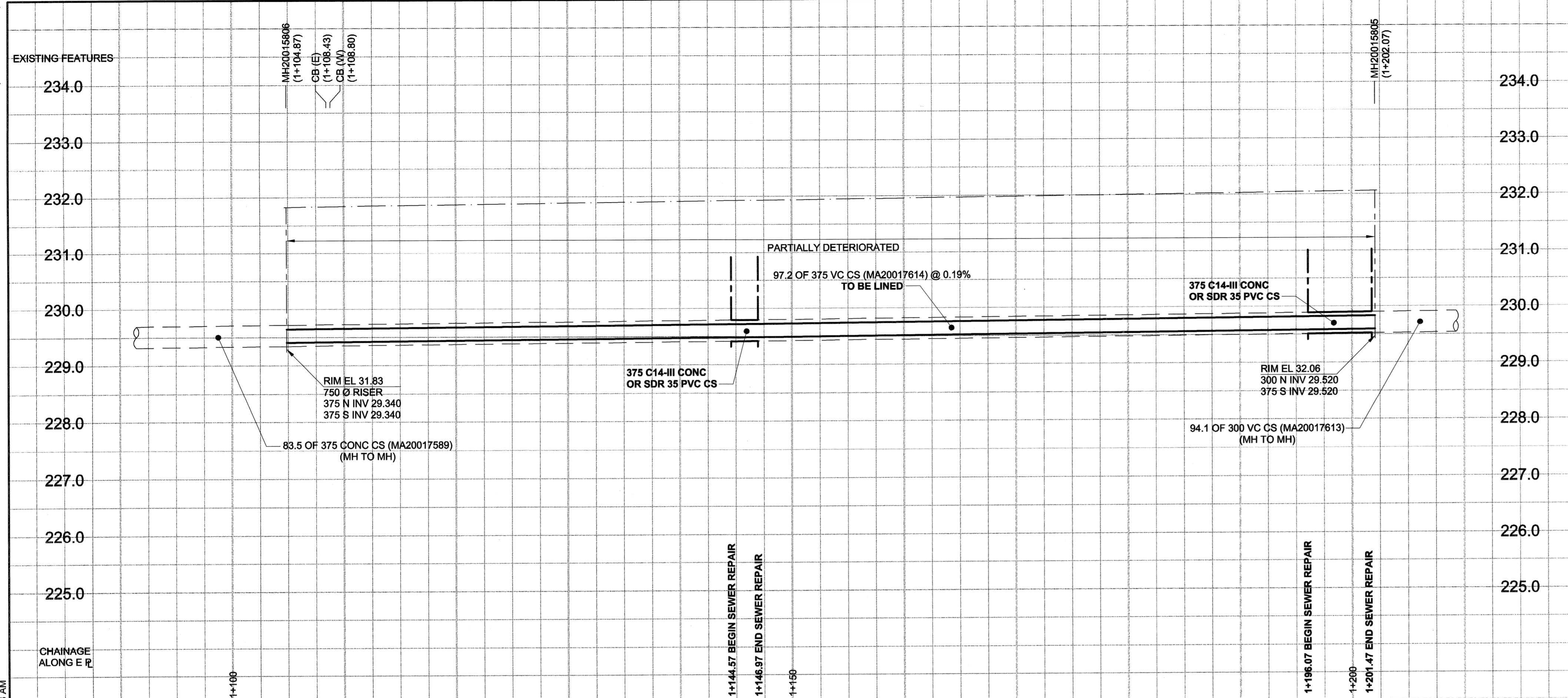


D SIZE 22" x 34" (559mm x 864mm)

PLLOT: 08/07/08 10:48:08 AM

UMA REVIEW DREF CHK



SEWER JUNCTION INFORMATION

REF. MH	DIST FROM	SIZE	CLOCK AT*
MH20015805	2.50	1500	09
MH20015805	3.10	1500	03
MH20015805	4.40	1500	03
MH20015805	10.40	1500	06
MH20015805	13.80	1500	03
MH20015805	17.80	1500	09
MH20015805	25.60	1500	09
MH20015805	33.50	1500	09
MH20015805	34.10	1500	03
MH20015805	40.80	1500	09
MH20015805	41.40	1500	03
MH20015805	47.90	1500	09
MH20015805	55.90	1500	09
MH20015805	6.00	1500	02
MH20015805	10.80	1500	10
MH20015806	18.20	1500	03
MH20015806	25.40	1500	09
MH20015806	26.10	1500	03
MH20015806	33.30	1500	03
MH20015806	40.70	1500	09

* JUNCTION INFORMATION FROM VIDEO INSPECTION

WARNING

IF POWER EQUIPMENT OR EXPLOSIVES ARE TO BE USED FOR EXCAVATION ON THIS PROJECT, THE CONTRACTOR MUST:

- NOTIFY THE GAS COMPANY OF THE PROPOSED LOCATION OF EXCAVATION.
- TAKE PRECAUTION TO AVOID DAMAGE TO GAS COMPANY INSTALLATIONS.

SEE PROVINCIAL REGULATION 140/92 FOR DETAILS

METRIC
WHOLE NUMBERS INDICATE MILLIMETRES
DECIMALIZED NUMBERS INDICATE METRES

150 WM	WATERMAIN	150 WM	CURB STOP	150 WM	WATERMAIN	150 WM
+	HYDRANT	+	REDUCER	+	HYDRANT	+
○	VALVE	○	COUPLING	○	VALVE	○
⊗	LAND DRAINAGE SEWER	⊗	ANODE	⊗	LAND DRAINAGE SEWER	⊗
○	WASTE WATER SEWER	○	HYDRO	○	WASTE WATER SEWER	○
○	MANHOLE	○	MTS	○	PAVEMENT CROWN	○
□	CATCH BASIN	□	GAS	□	N/W PROPERTY LINE	□
△	CURB INLET	△	TESTHOLE	△	S/E PROPERTY LINE	△
⊕	CULVERT	⊕	LAMP STANDARD	⊕	N/W GUTTER	⊕
⊕	PIPE ABANDONMENTS	⊕	TREE	⊕	S/E GUTTER	⊕
⊕	SURVEY BAR					
---	EXISTING	---	LEGEND - PLAN	---	LEGEND - PROFILE	---
---	NEW	---	LEGEND - PLAN	---	NEW	---

LOCATION APPROVED
UNDERGROUND STRUCTURES

NO. REVISIONS

DATE

BY

DATE

BY

0 36-057
ELEV 232.727m

N.E. Cor. Wellington Ave. & McGee St.
Tilt in E. Conc. Foundation No. 725 McGee St.
1 m N. & 0.1 m below brick of S.E. Cor. of Bldg.

UMA AECOM

© 2006 UMA ENGINEERING LTD. ALL RIGHTS RESERVED.

DESIGNED BY ALD / MJR

CHECKED BY

DRAWN BY KMB

APPROVED BY

HOR. SCALE 1:250

VERT. SCALE 1:50

ISSUED FOR CONSTRUCTION 08/07/08 KMB

08/07/08

PROFESSIONAL'S SEAL

PROVINCE OF MANITOBA

27 July 2008

C. C. MACEY

REGISTERED ENGINEER

CONSULTANT DRAWING NO. 16

D265-228-01

THE CITY OF WINNIPEG
WATER AND WASTE DEPARTMENT

2008 COMBINED SEWER RENEWALS
BY CIPP LINING
CONTRACT 15

VICTOR STREET
70m N OF OF SARGENT AVENUE
TO 173m S OF WELLINGTON AVENUE

SHEET 16 OF 19

CITY DRAWING NUMBER

8595

REV 0

BID OPPORTUNITY NO. 467-2008