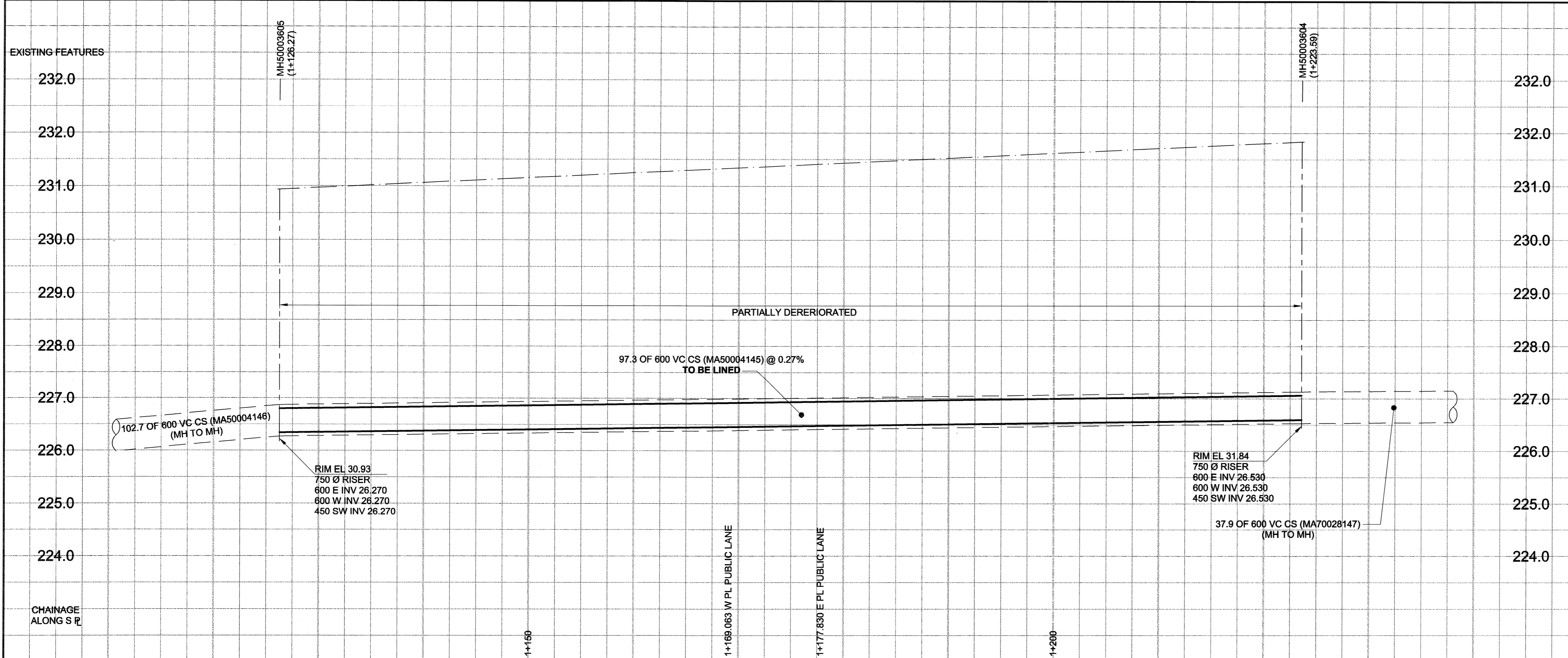


D SIZE 22" x 34" (559mm x 864mm)

PLOT: 08/07/08 10:45:32 AM

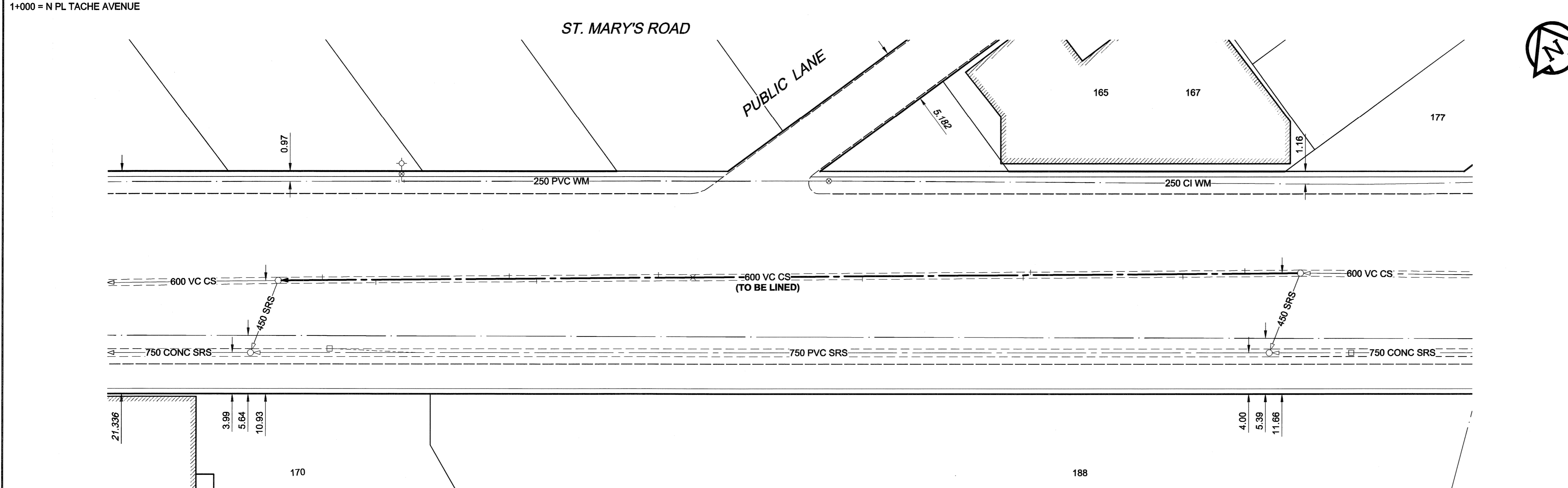
UMA REVIEW DRAFT CHK



SEWER JUNCTION INFORMATION

REF. MH	DIST FROM	SIZE	CLOCK AT
MH50003604	5.30	1500	02
MH50003604	11.20	1500	10
MH50003604	25.70	1500	02
MH50003604	26.40	1500	10
MH50003604	41.70	1500	10
MH50003605	4.20	1500	11
MH50003605	9.30	1500	02
MH50003605	22.00	1500	10
MH50003605	24.60	1500	02
MH50003605	36.20	1500	11
MH50003605	39.50	1500	12

*JUNCTION INFORMATION FROM VIDEO INSPECTION



WARNING
 IF POWER EQUIPMENT OR EXPLOSIVES ARE TO BE USED FOR EXCAVATION ON THIS PROJECT, THE CONTRACTOR MUST:
 1) NOTIFY THE GAS COMPANY OF THE PROPOSED LOCATION OF EXCAVATION.
 2) TAKE PRECAUTION TO AVOID DAMAGE TO GAS COMPANY INSTALLATIONS.
 SEE PROVINCIAL REGULATION 140/92 FOR DETAILS

METRIC
 WHOLE NUMBERS INDICATE MILLIMETRES
 DECIMALIZED NUMBERS INDICATE METRES

150 WM	WATERMAIN	150 WM	150 WM	CURB STOP	150 WM	WATERMAIN	150 WM	LOCATION APPROVED UNDERGROUND STRUCTURES
+	HYDRANT	+	+	+	+	HYDRANT	+	+
+	VALVE	+	+	+	+	VALVE	+	+
+	300 LDS LAND DRAINAGE SEWER	+	+	+	+	300 LDS LAND DRAINAGE SEWER	+	+
+	250 WWS WASTE WATER SEWER	+	+	+	+	250 WWS WASTE WATER SEWER	+	+
○	MANHOLE	○	○	○	○	MANHOLE	○	○
□	CATCH BASIN	□	□	□	□	CATCH BASIN	□	□
△	CURB INLET	△	△	△	△	CURB INLET	△	△
▭	CULVERT	▭	▭	▭	▭	CULVERT	▭	▭
+	PIPE ABANDONMENTS	+	+	+	+	PIPE ABANDONMENTS	+	+
+	SURVEY BAR	+	+	+	+	SURVEY BAR	+	+
+	EXISTING	+	+	+	+	EXISTING	+	+
+	LEGEND - PLAN	+	+	+	+	LEGEND - PLAN	+	+
+	NEW	+	+	+	+	NEW	+	+
+	EXISTING	+	+	+	+	EXISTING	+	+
+	LEGEND - PROFILE	+	+	+	+	LEGEND - PROFILE	+	+
+	NEW	+	+	+	+	NEW	+	+
+	EXISTING	+	+	+	+	EXISTING	+	+
+	LEGEND - PROFILE	+	+	+	+	LEGEND - PROFILE	+	+
+	NEW	+	+	+	+	NEW	+	+
+	EXISTING	+	+	+	+	EXISTING	+	+

LOCATION APPROVED UNDERGROUND STRUCTURES

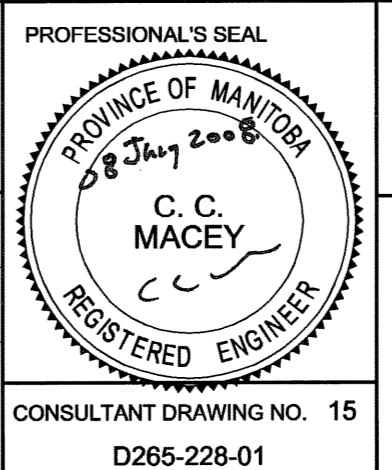
NO.	REVISIONS	YYMMDD	BY
0	ISSUED FOR CONSTRUCTION	08/07/08	KMB

NOTE:
 LOCATION OF UNDERGROUND STRUCTURES AS SHOWN ARE BASED ON THE BEST INFORMATION AVAILABLE. BUT NO GUARANTEE IS GIVEN THAT ALL EXISTING UTILITIES ARE SHOWN OR THAT THE GIVEN LOCATIONS ARE EXACT. CONFIRMATION OF EXISTENCE AND EXACT LOCATION OF ALL SERVICES MUST BE OBTAINED FROM THE INDIVIDUAL UTILITIES BEFORE PROCEEDING WITH CONSTRUCTION.

UMA | AECOM

© 2006 UMA ENGINEERING LTD. ALL RIGHTS RESERVED.

DESIGNED BY	ALD / MJR	CHECKED BY	
ALD / MJR	ALD / MJR	ALD / MJR	
DRAWN BY	KMB	APPROVED BY	<i>[Signature]</i>
HOR. SCALE	1:250	RELEASED FOR CONSTRUCTION	<i>[Signature]</i>
VERT. SCALE	1:50	DATE	08/07/08



THE CITY OF WINNIPEG
WATER AND WASTE DEPARTMENT

2008 COMBINED SEWER RENEWALS
BY CIPP LINING
CONTRACT 15
ST. MARY'S ROAD
 110m E OF TACHE AVENUE
 TO 66m W OF HIGHFIELD STREET

SHEET 15 OF 19
 CITY DRAWING NUMBER
8594

REV 0

BID OPPORTUNITY NO. 467-2008