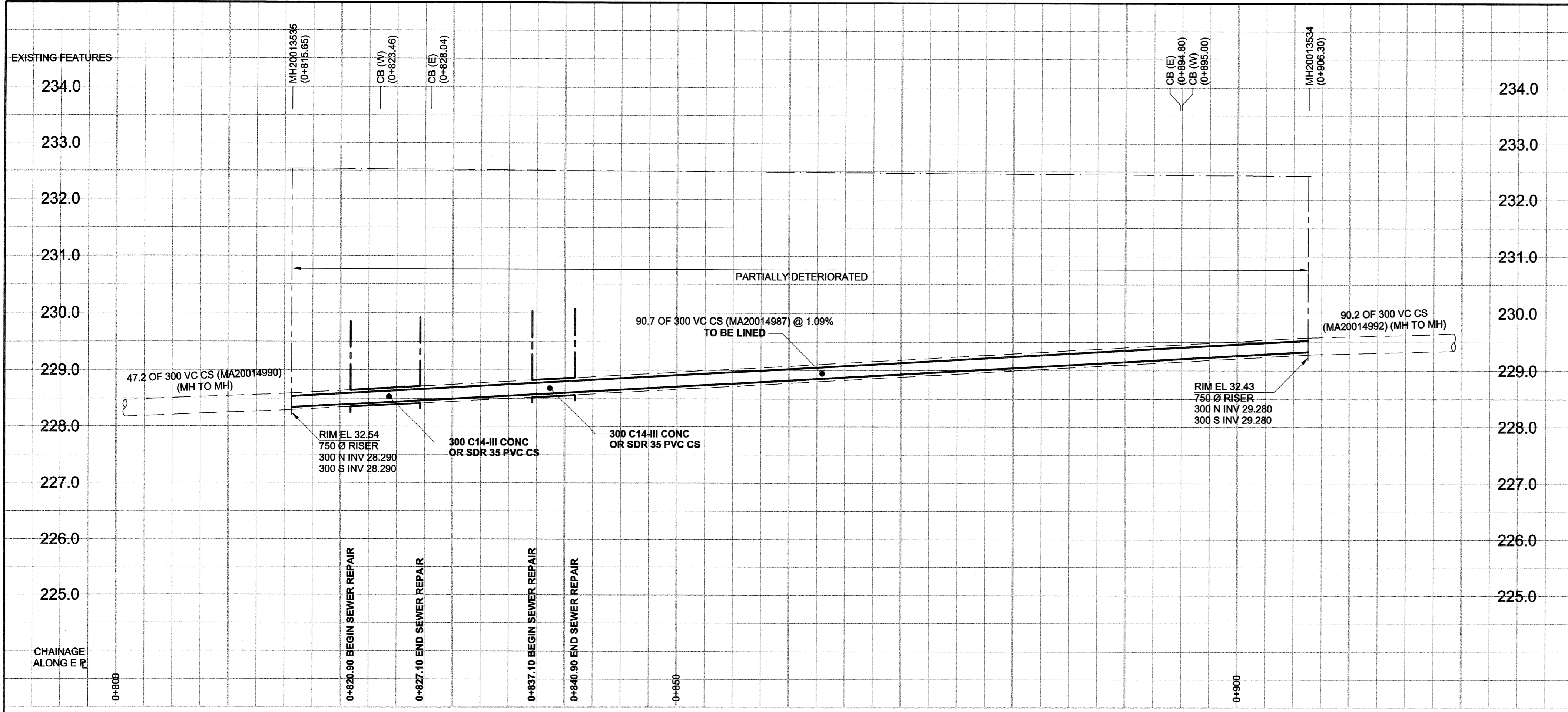


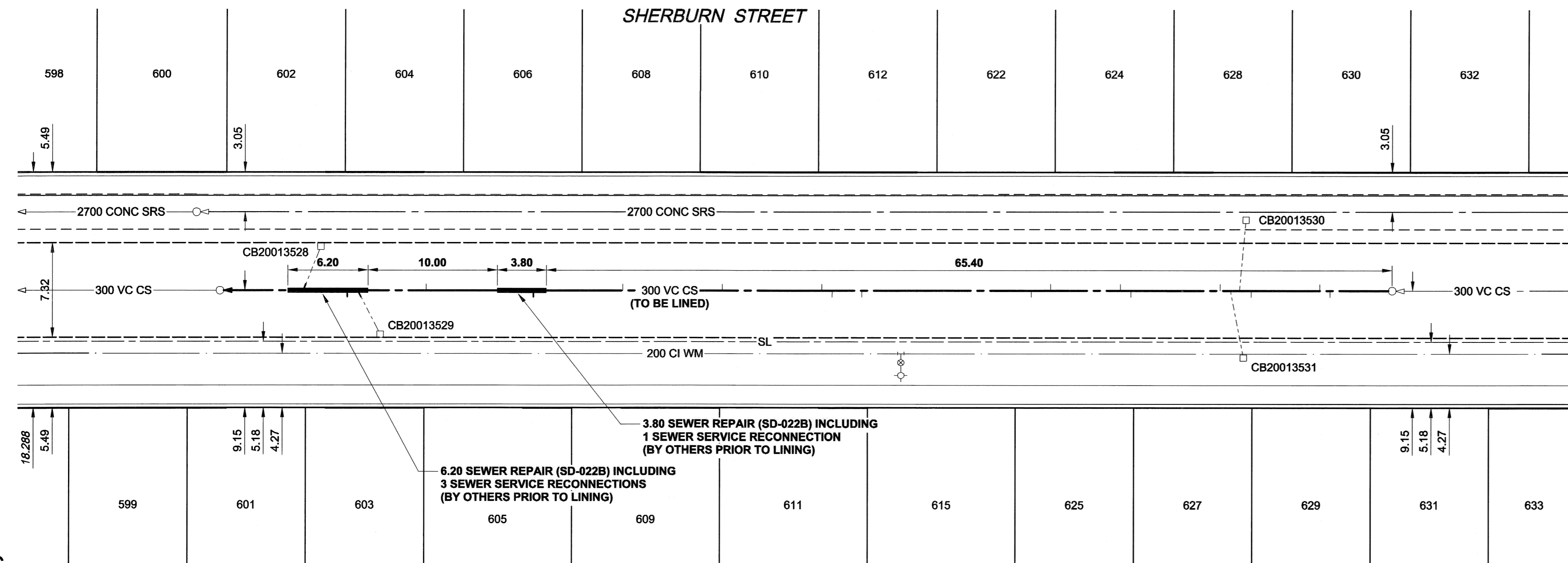
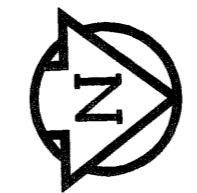
D SIZE 22" x 34" (559mm x 864mm)

PLOT: 08/07/07 4:37:34 PM

UMA REVIEW DRAFT CHK



1+000 = S PL. OF ST. MATTHEWS AVENUE



**SEWER JUNCTION INFORMATION**

REF. MH	DIST FROM	SIZE	CLOCK AT
MH20013534	4.80	1500	11
MH20013534	5.60	1500	02
MH20013534	10.80	2000	10
MH20013534	11.80	2000	02
MH20013534	12.50	2000	11
MH20013534	13.30	2000	02
MH20013534	20.20	1500	10
MH20013534	21.00	1500	02
MH20013534	25.40	1500	02
MH20013534	27.90	1500	10
MH20013534	41.00	1500	10
MH20013534	43.30	1500	10
MH20013534	44.10	1500	01
MH20013534	51.80	1500	02
MH20013534	59.50	1500	01
MH20013534	66.40	1500	11
MH20013534	74.70	1500	01
MH20013534	80.00	2000	10
MH20013534	83.80	1500	10
MH20013534	84.20	2000	02

\*JUNCTION INFORMATION FROM VIDEO INSPECTION

**WARNING**  
 IF POWER EQUIPMENT OR EXPLOSIVES ARE TO BE USED FOR EXCAVATION ON THIS PROJECT, THE CONTRACTOR MUST:  
 1) NOTIFY THE GAS COMPANY OF THE PROPOSED LOCATION OF EXCAVATION.  
 2) TAKE PRECAUTION TO AVOID DAMAGE TO GAS COMPANY INSTALLATIONS.  
 SEE PROVINCIAL REGULATION 140/92 FOR DETAILS

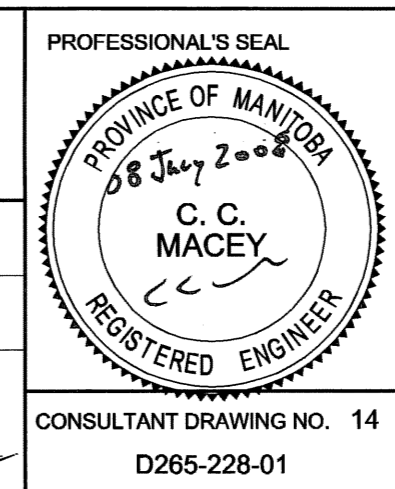
EXISTING	LEGEND - PLAN	NEW	EXISTING	LEGEND - PLAN	NEW	EXISTING	LEGEND - PROFILE	NEW
150 WM	WATERMAIN	150 WM	150 WM	WATERMAIN	150 WM	150 WM	WATERMAIN	150 WM
300 LDS	LAND DRAINAGE SEWER	300 LDS	300 LDS	LAND DRAINAGE SEWER	300 LDS	300 LDS	LAND DRAINAGE SEWER	300 LDS
250 WWS	WASTE WATER SEWER	250 WWS	250 WWS	WASTE WATER SEWER	250 WWS	250 WWS	WASTE WATER SEWER	250 WWS
○	MANHOLE	●	○	MANHOLE	●	○	MANHOLE	●
□	CATCH BASIN	■	□	CATCH BASIN	■	□	CATCH BASIN	■
△	CURB INLET	▲	△	CURB INLET	▲	△	CURB INLET	▲
-----	CULVERT	-----	-----	CULVERT	-----	-----	CULVERT	-----
—	PIPE ABANDONMENTS	—	—	PIPE ABANDONMENTS	—	—	PIPE ABANDONMENTS	—
+	SURVEY BAR	+	+	SURVEY BAR	+	+	SURVEY BAR	+
○	HYDRANT	○	○	HYDRANT	○	○	HYDRANT	○
+	VALVE	+	+	VALVE	+	+	VALVE	+
○	ANODE	○	○	ANODE	○	○	ANODE	○
○	MTS	○	○	MTS	○	○	MTS	○
○	GAS	○	○	GAS	○	○	GAS	○
○	TESTHOLE	○	○	TESTHOLE	○	○	TESTHOLE	○
○	LAMP STANDARD	○	○	LAMP STANDARD	○	○	LAMP STANDARD	○
○	TREE	○	○	TREE	○	○	TREE	○

**METRIC**  
 WHOLE NUMBERS INDICATE MILLIMETRES  
 DECIMALIZED NUMBERS INDICATE METRES

**LOCATION APPROVED**  
 UNDERGROUND STRUCTURES  
 SUPR. U/G STRUCTURES DATE COMMITTEE  
 NOTE:  
 LOCATION OF UNDERGROUND STRUCTURES AS SHOWN ARE BASED ON THE BEST INFORMATION AVAILABLE. BUT NO GUARANTEE IS GIVEN THAT ALL EXISTING UTILITIES ARE SHOWN OR THAT THE GIVEN LOCATIONS ARE EXACT. CONFIRMATION OF EXISTENCE AND EXACT LOCATION OF ALL SERVICES MUST BE OBTAINED FROM THE INDIVIDUAL UTILITIES BEFORE PROCEEDING WITH CONSTRUCTION.

NO.	REVISIONS	DATE	BY
0	ISSUED FOR CONSTRUCTION	08/07/08	KMB

DESIGNED BY	ALD / MJR	CHECKED BY	[Signature]
DRAWN BY	KMB	APPROVED BY	[Signature]
HOR. SCALE	1:250	RELEASED FOR CONSTRUCTION	[Signature]
VERT. SCALE	1:50	DATE	08/07/08



**THE CITY OF WINNIPEG WATER AND WASTE DEPARTMENT**

**2008 COMBINED SEWER RENEWALS BY CIPP LINING CONTRACT 15 SHERBURN STREET**

160m N OF WOLEVER AVENUE TO 80m S OF ST. MATTHEWS AVENUE

SHEET 14 OF 19  
 CITY DRAWING NUMBER 8593  
 REV 0

BID OPPORTUNITY NO. 467-2008