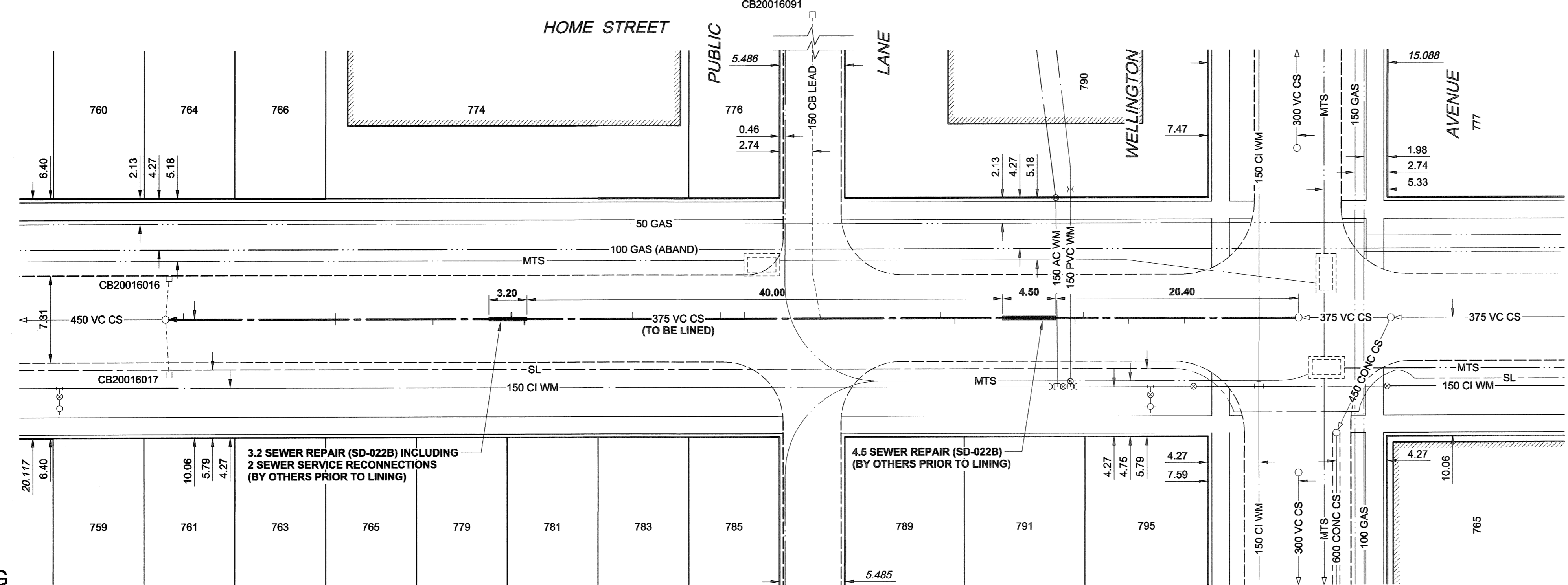
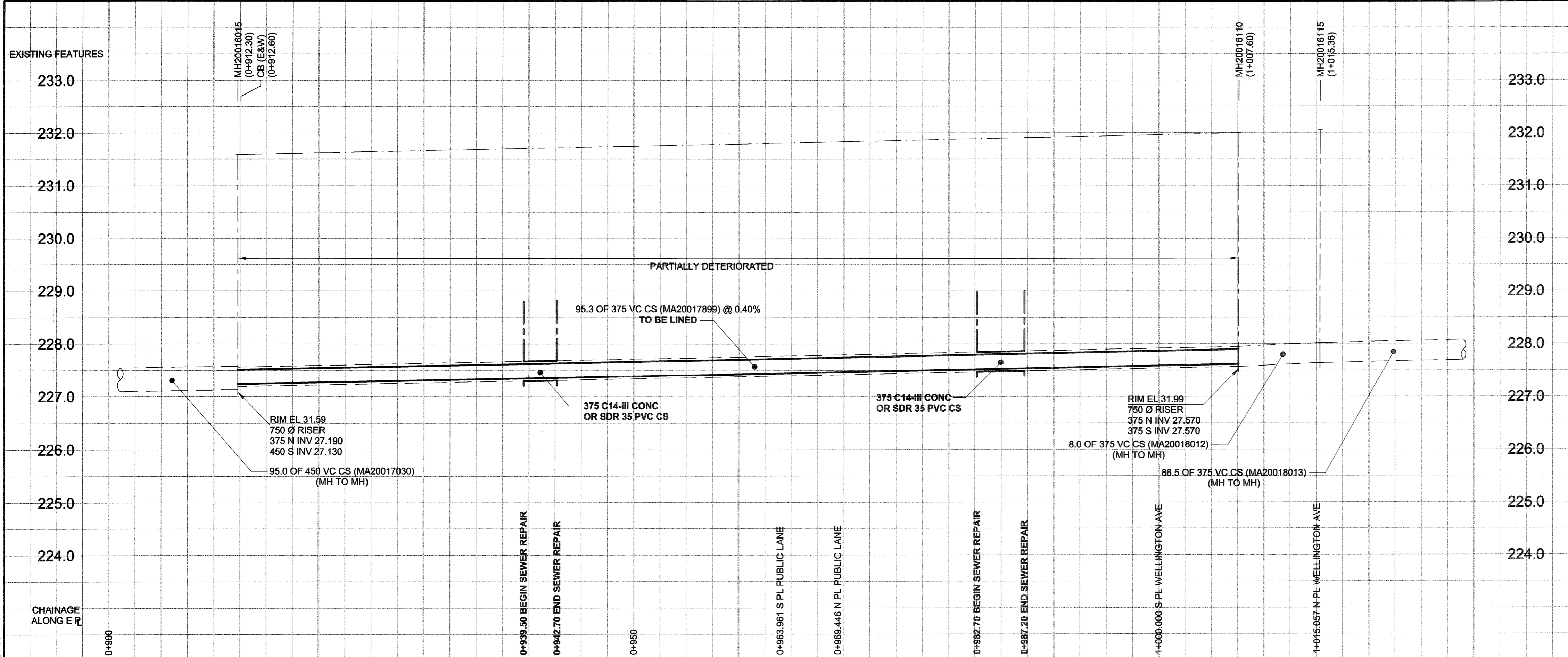


D SIZE 22" x 34" (559mm x 864mm)

PLT: 08/07/08 10:44:38 AM

UMA REVIEW DRAFT CHK
 UMA FILE NAME: D265-228-01_00-C-1013_RX.dwg Saved By: lberard



SEWER JUNCTION INFORMATION

REF. MH	DIST FROM REF. MH	SIZE	CLOCK AT
MH20016110	9.60	1500	11
MH20016110	14.30	1500	11
MH20016110	18.10	1500	02
MH20016110	18.80	1500	11
MH20016110	28.50	1500	11
MH20016110	30.10	1500	02
MH20016110	40.20	1500	02
MH20016110	46.60	1500	01
MH20016110	48.60	1500	02
MH20016110	50.60	1500	10
MH20016110	56.00	1500	02
MH20016110	65.10	1500	10
MH20016110	66.20	750	02
MH20016110	72.80	1500	11
MH20016110	81.00	1500	11
MH20016110	81.00	1500	01
MH20016110	93.80	1500	02

*JUNCTION INFORMATION FROM VIDEO INSPECTION

WARNING
 IF POWER EQUIPMENT OR EXPLOSIVES ARE TO BE USED FOR EXCAVATION ON THIS PROJECT, THE CONTRACTOR MUST:
 1) NOTIFY THE GAS COMPANY OF THE PROPOSED LOCATION OF EXCAVATION.
 2) TAKE PRECAUTION TO AVOID DAMAGE TO GAS COMPANY INSTALLATIONS.
 SEE PROVINCIAL REGULATION 140/92 FOR DETAILS

EXISTING	LEGEND - PLAN	NEW	EXISTING	LEGEND - PROFILE	NEW
150 WM	WATERMAIN	150 WM	150 WM	WATERMAIN	150 WM
300 LDS	LAND DRAINAGE SEWER	300 LDS	300 LDS	LAND DRAINAGE SEWER	300 LDS
250 WWS	WASTE WATER SEWER	250 WWS	250 WWS	WASTE WATER SEWER	250 WWS
○	MANHOLE	●	○	MANHOLE	●
□	CATCH BASIN	■	□	CATCH BASIN	■
△	CURB INLET	▲	△	CURB INLET	▲
○	CULVERT	○	○	CULVERT	○
—	PIPE ABANDONMENTS	—	—	PIPE ABANDONMENTS	—
+	SURVEY BAR	+	+	SURVEY BAR	+
○	CURB STOP	○	○	CURB STOP	○
○	REDUCER	○	○	REDUCER	○
○	COUPLING	○	○	COUPLING	○
○	ANODE	○	○	ANODE	○
○	HYDRO	○	○	HYDRO	○
○	MTS	○	○	MTS	○
○	GAS	○	○	GAS	○
○	TESTHOLE	○	○	TESTHOLE	○
○	LAMP STANDARD	○	○	LAMP STANDARD	○
○	TREE	○	○	TREE	○

METRIC
 WHOLE NUMBERS INDICATE MILLIMETRES
 DECIMALIZED NUMBERS INDICATE METRES

LOCATION APPROVED
 UNDERGROUND STRUCTURES

DATE: 08/07/08

NOTE: LOCATION OF UNDERGROUND STRUCTURES AS SHOWN ARE BASED ON THE BEST INFORMATION AVAILABLE. BUT NO GUARANTEE IS GIVEN THAT ALL EXISTING UTILITIES ARE SHOWN OR THAT THE GIVEN LOCATIONS ARE EXACT. CONFIRMATION OF EXISTENCE AND EXACT LOCATION OF ALL SERVICES MUST BE OBTAINED FROM THE INDIVIDUAL UTILITIES BEFORE PROCEEDING WITH CONSTRUCTION.

NO.	ISSUED FOR CONSTRUCTION	DATE	BY
0	ISSUED FOR CONSTRUCTION	08/07/08	KMB
NO.	REVISIONS	YYMMDD	BY

UMA | AECOM

© 2008 UMA ENGINEERING LTD. ALL RIGHTS RESERVED.

DESIGNED BY: ALD / MJR
 CHECKED BY: [Signature]
 DRAWN BY: KMB
 APPROVED BY: [Signature]
 HOR. SCALE: 1:250
 VERT. SCALE: 1:50
 DATE: 08/07/08

APEGM
 Certificate of Authorization
 UMA Engineering Ltd. (MB)
 No. 256 Date: 08/07/08

PROFESSIONAL'S SEAL
 PROVINCE OF MANITOBA
 8th July 2008
C. C. MACEY
 REGISTERED ENGINEER
 CONSULTANT DRAWING NO. 09
 D265-228-01

THE CITY OF WINNIPEG
 WATER AND WASTE DEPARTMENT

2008 COMBINED SEWER RENEWALS
 BY CIPP LINING
 CONTRACT 15
 HOME STREET
 263m N OF SARGENT AVENUE
 TO WELLINGTON AVENUE

SHEET 9 OF 19
 CITY DRAWING NUMBER
8588
 REV 0

BID OPPORTUNITY NO. 467-2008