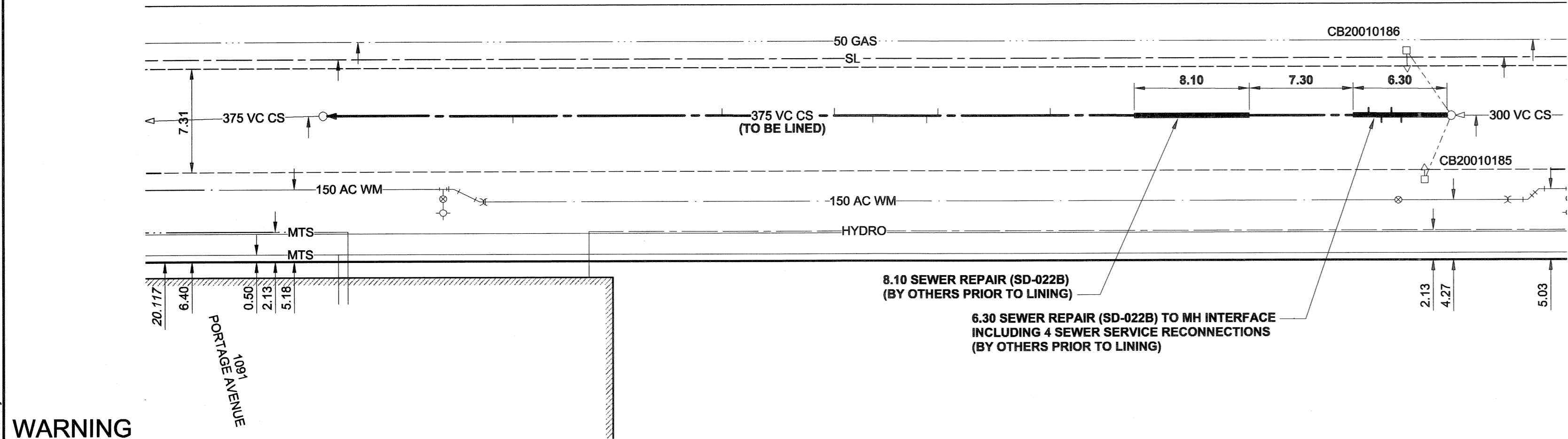
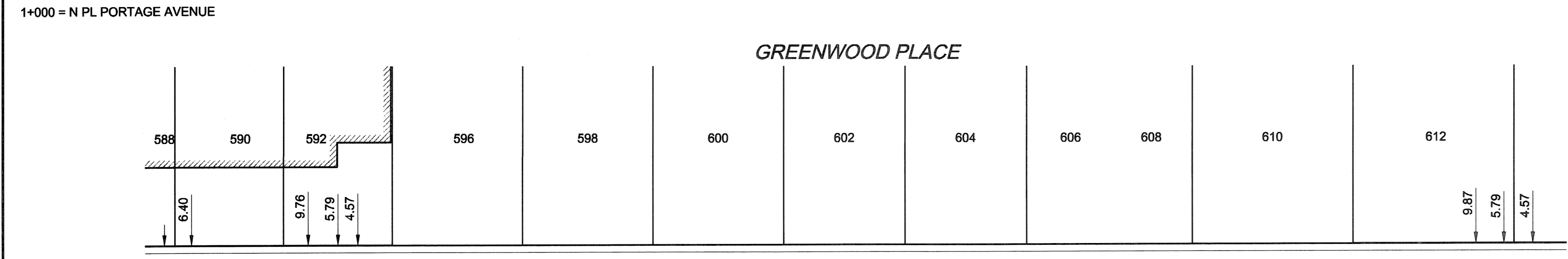
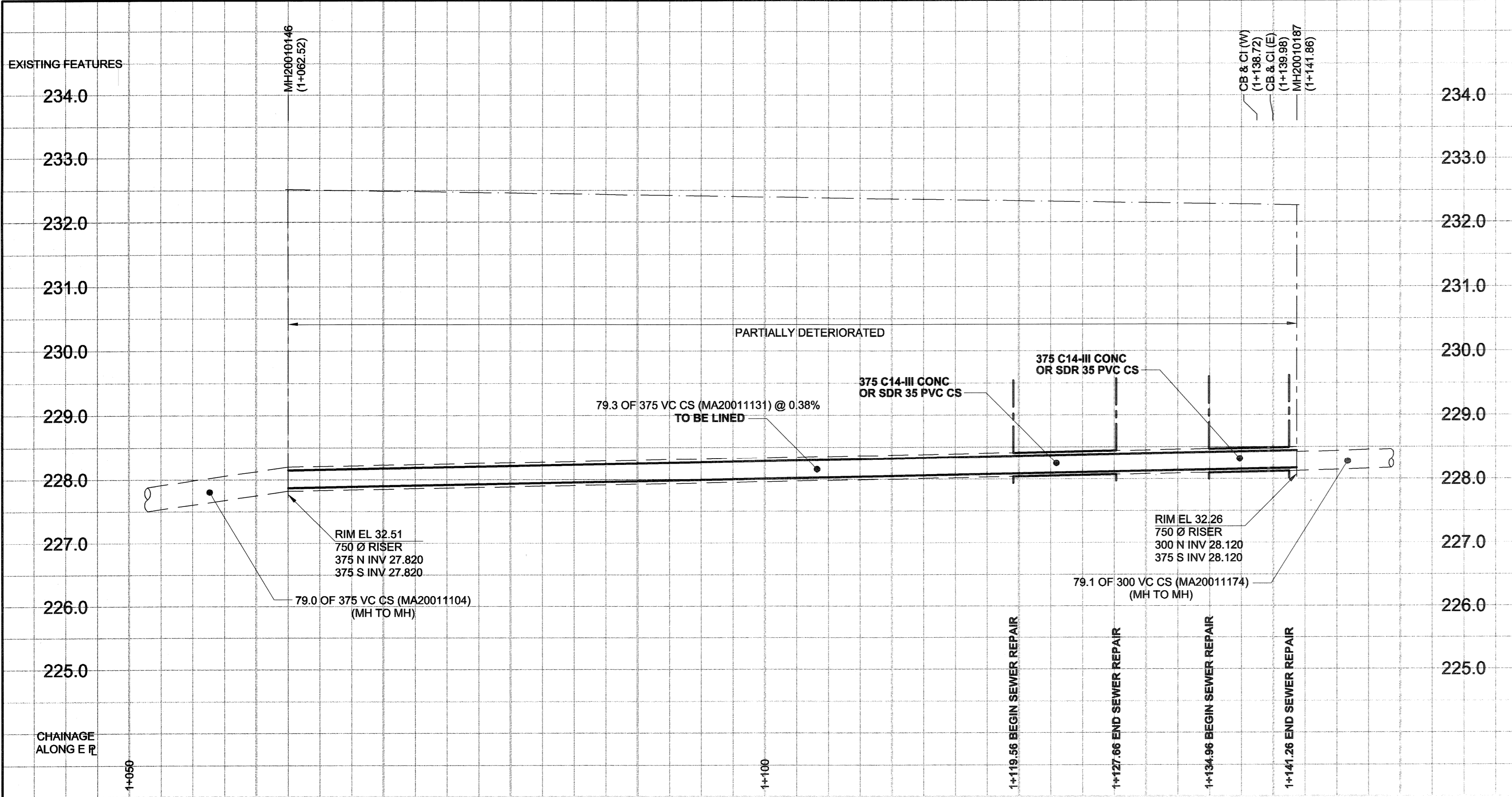


D SIZE 22" x 34" (559mm x 864mm)

PLOT: 08/07/07 3:02:48 PM

UMA REVIEW DRFT CHK



SEWER JUNCTION INFORMATION

REF. MH*	DIST FROM*	SIZE*	CLOCK AT*
MH20010187	3.50	1500	10
MH20010187	4.20	1500	02
MH20010187	4.90	1500	10
MH20010187	5.80	1500	02
MH20010187	28.20	1500	02
MH20010187	36.10	1500	03
MH20010187	36.90	1500	11
MH20010187	40.70	1500	09
MH20010187	43.40	1500	02
MH20010187	51.30	1500	02
MH20010187	66.00	1500	10

*JUNCTION INFORMATION FROM VIDEO INSPECTION

WARNING
 IF POWER EQUIPMENT OR EXPLOSIVES ARE TO BE USED FOR EXCAVATION ON THIS PROJECT, THE CONTRACTOR MUST:
 1) NOTIFY THE GAS COMPANY OF THE PROPOSED LOCATION OF EXCAVATION.
 2) TAKE PRECAUTION TO AVOID DAMAGE TO GAS COMPANY INSTALLATIONS.
 SEE PROVINCIAL REGULATION 140/92 FOR DETAILS

METRIC
 WHOLE NUMBERS INDICATE MILLIMETRES
 DECIMALIZED NUMBERS INDICATE METRES

EXISTING	LEGEND - PLAN	NEW	EXISTING	LEGEND - PROFILE	NEW
150 WM	WATERMAIN	150 WM	150 WM	WATERMAIN	150 WM
300 LDS	LAND DRAINAGE SEWER	300 LDS	300 LDS	LAND DRAINAGE SEWER	300 LDS
250 WWS	WASTE WATER SEWER	250 WWS	250 WWS	WASTE WATER SEWER	250 WWS
○	MANHOLE	●	○	MANHOLE	●
□	CATCH BASIN	■	□	CATCH BASIN	■
△	CURB INLET	▲	△	CURB INLET	▲
▭	CULVERT	▭	▭	CULVERT	▭
—	PIPE ABANDONMENTS	—	—	PIPE ABANDONMENTS	—
+	SURVEY BAR	+	+	SURVEY BAR	+
○	HYDRANT	○	○	HYDRANT	○
×	VALVE	×	×	VALVE	×
○	ANODE	○	○	ANODE	○
○	HYDRO	○	○	HYDRO	○
○	MTS	○	○	MTS	○
○	GAS	○	○	GAS	○
○	TESTHOLE	○	○	TESTHOLE	○
○	LAMP STANDARD	○	○	LAMP STANDARD	○
○	TREE	○	○	TREE	○

LOCATION APPROVED
 UNDERGROUND STRUCTURES

SUPR. U/G STRUCTURES COMMITTEE DATE

NOTE:
 LOCATION OF UNDERGROUND STRUCTURES AS SHOWN ARE BASED ON THE BEST INFORMATION AVAILABLE. BUT NO GUARANTEE IS GIVEN THAT ALL EXISTING UTILITIES ARE SHOWN OR THAT THE GIVEN LOCATIONS ARE EXACT. CONFIRMATION OF EXISTENCE AND EXACT LOCATION OF ALL SERVICES MUST BE OBTAINED FROM THE INDIVIDUAL UTILITIES BEFORE PROCEEDING WITH CONSTRUCTION.

BM 37-010	Tblt. In S. wall of the Highway Services Bldg.,
ELEV 233.445m	No. 1075 Portage Ave., 0.5 m E. of
	S.W. Cor. of Bldg.

DESIGNED BY	ALD / MJR	CHECKED BY	<i>[Signature]</i>
DRAWN BY	KMB	APPROVED BY	<i>[Signature]</i>
HOR. SCALE	1:250	RELEASED FOR CONSTRUCTION	<i>[Signature]</i>
VERT. SCALE	1:50	DATE	08/07/08

UMA | AECOM

© 2006 UMA ENGINEERING LTD. ALL RIGHTS RESERVED.

PROFESSIONAL'S SEAL
 PROVINCE OF MANITOBA
 C. C. MACEY
 REGISTERED ENGINEER
 CONSULTANT DRAWING NO. 07
 D265-228-01

THE CITY OF WINNIPEG
 WATER AND WASTE DEPARTMENT

2008 COMBINED SEWER RENEWALS
 BY CIPP LINING
 CONTRACT 15
 GREENWOOD PLACE
 50m N OF PORTAGE AVENUE
 TO 140m S OF WOLEVER AVENUE

SHEET 7 OF 19
 CITY DRAWING NUMBER
8586
 REV 0

BID OPPORTUNITY NO. 467-2008