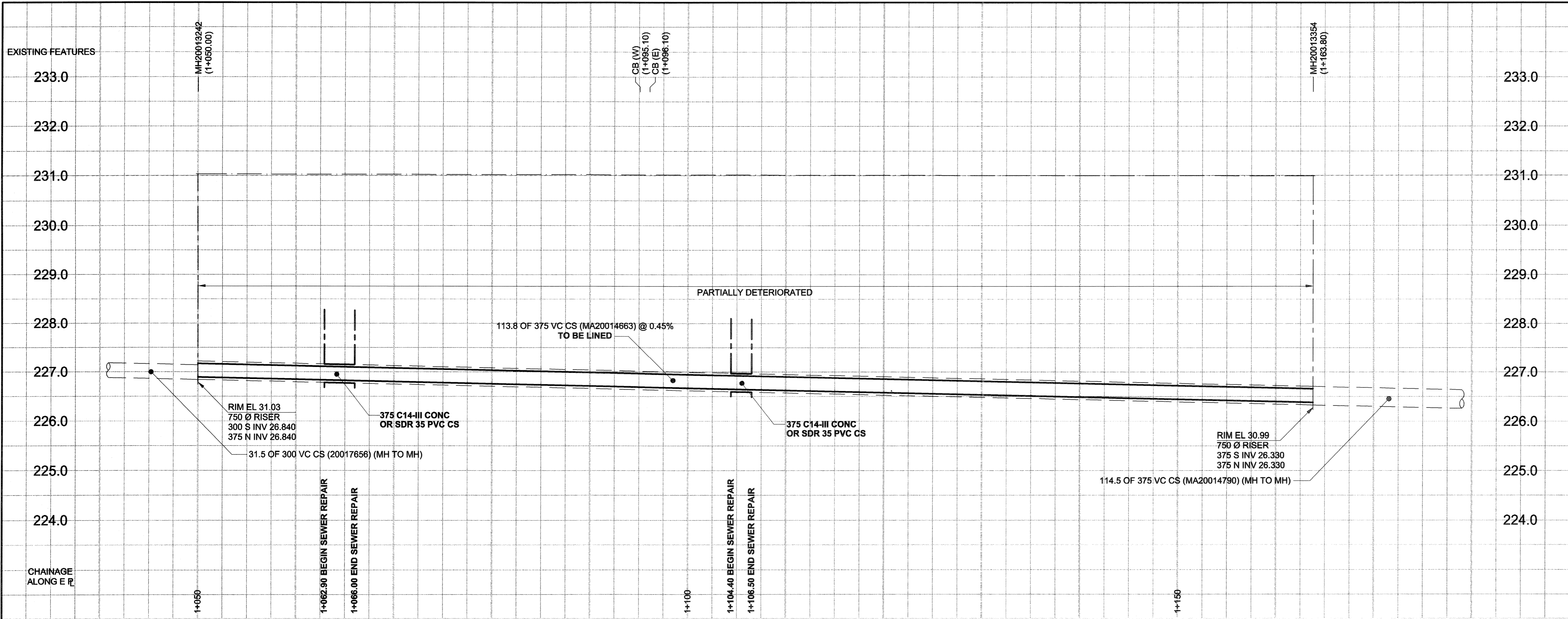


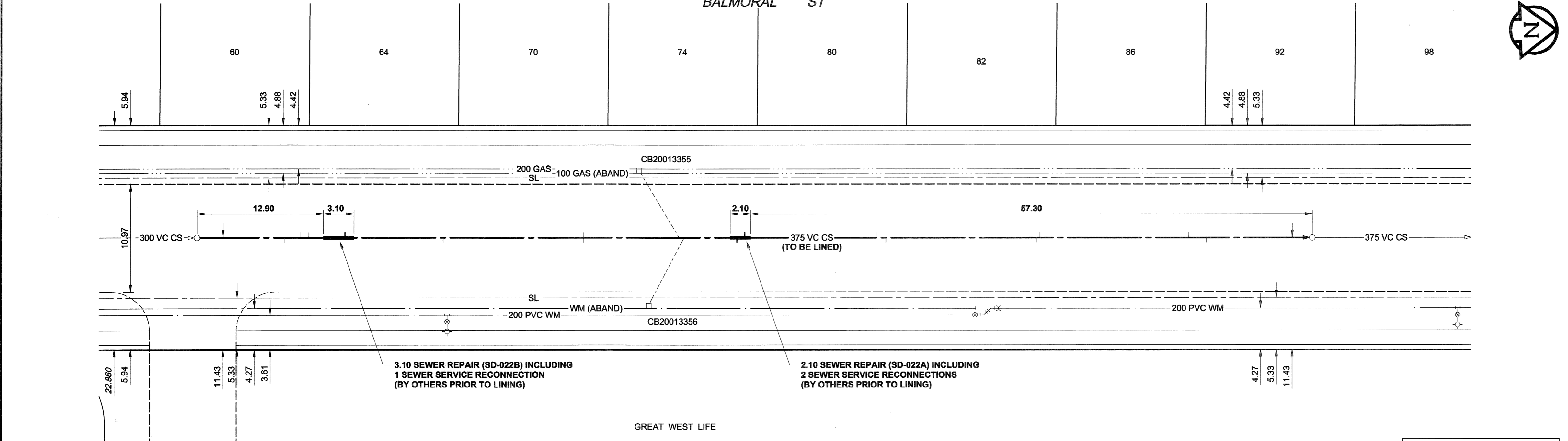
D SIZE 22" x 34" (559mm x 864mm)

PLOT: 08/07/07 3:03:41 PM

UMA REVIEW DRAFT CHK



1+000 = N PL MOSTYN PLACE



SEWER JUNCTION INFORMATION

REF. MH*	DIST FROM REF. MH	SIZE*	CLOCK AT*
MH20013242	8.90	1500	10
MH20013242	10.50	1500	11
MH20013242	11.40	1500	09
MH20013242	15.10	1500	10
MH20013242	25.10	1500	02
MH20013242	39.40	1500	02
MH20013242	39.40	1500	10
MH20013242	49.20	2000	10
MH20013242	49.90	2000	02
MH20013354	10.80	1500	11
MH20013354	12.60	1500	01
MH20013354	27.80	1500	01
MH20013354	28.10	1500	10
MH20013354	43.50	1500	10
MH20013354	44.50	1500	02
MH20013354	57.90	1500	02
MH20013354	58.70	1500	10

*JUNCTION INFORMATION FROM VIDEO INSPECTION

WARNING
 IF POWER EQUIPMENT OR EXPLOSIVES ARE TO BE USED FOR EXCAVATION ON THIS PROJECT, THE CONTRACTOR MUST:
 1) NOTIFY THE GAS COMPANY OF THE PROPOSED LOCATION OF EXCAVATION.
 2) TAKE PRECAUTION TO AVOID DAMAGE TO GAS COMPANY INSTALLATIONS.
 SEE PROVINCIAL REGULATION 140/92 FOR DETAILS

METRIC
 WHOLE NUMBERS INDICATE MILLIMETRES
 DECIMALIZED NUMBERS INDICATE METRES

AECOM
 Certificate of Authorization
 UMA Engineering Ltd. (MB)
 No. 256 Date: 08/07/08

BID OPPORTUNITY NO. 467-2008

EXISTING	LEGEND - PLAN	NEW	EXISTING	LEGEND - PLAN	NEW	EXISTING	LEGEND - PROFILE	NEW
150 WM	WATERMAIN	150 WM	150 WM	WATERMAIN	150 WM	150 WM	WATERMAIN	150 WM
Hydrant symbol	HYDRANT	Hydrant symbol	Hydrant symbol	REDUCER	Hydrant symbol	Hydrant symbol	HYDRANT	Hydrant symbol
Valve symbol	VALVE	Valve symbol	Valve symbol	COUPLING	Valve symbol	Valve symbol	VALVE	Valve symbol
300 LDS	LAND DRAINAGE SEWER	300 LDS	300 LDS	ANODE	300 LDS	300 LDS	LAND DRAINAGE SEWER	300 LDS
250 WWS	WASTE WATER SEWER	250 WWS	250 WWS	HYDRO	250 WWS	250 WWS	WASTE WATER SEWER	250 WWS
Manhole symbol	MANHOLE	Manhole symbol	Manhole symbol	MTS	Manhole symbol	Manhole symbol	PAVEMENT CROWN	Manhole symbol
Catch basin symbol	CATCH BASIN	Catch basin symbol	Catch basin symbol	GAS	Catch basin symbol	Catch basin symbol	N/W PROPERTY LINE	Catch basin symbol
Curb inlet symbol	CURB INLET	Curb inlet symbol	Curb inlet symbol	TESTHOLE	Curb inlet symbol	Curb inlet symbol	S/E PROPERTY LINE	Curb inlet symbol
Culvert symbol	CULVERT	Culvert symbol	Culvert symbol	LAMP STANDARD	Culvert symbol	Culvert symbol	N/W GUTTER	Culvert symbol
Pipe abandonment symbol	PIPE ABANDONMENTS	Pipe abandonment symbol	Pipe abandonment symbol	TREE	Pipe abandonment symbol	Pipe abandonment symbol	S/E GUTTER	Pipe abandonment symbol
Survey bar symbol	SURVEY BAR	Survey bar symbol	Survey bar symbol		Survey bar symbol	Survey bar symbol		Survey bar symbol

LOCATION APPROVED
 UNDERGROUND STRUCTURES
 SUPR. U/G STRUCTURES DATE COMMITTEE
 NOTE:
 LOCATION OF UNDERGROUND STRUCTURES AS SHOWN ARE BASED ON THE BEST INFORMATION AVAILABLE. BUT NO GUARANTEE IS GIVEN THAT ALL EXISTING UTILITIES ARE SHOWN OR THAT THE GIVEN LOCATIONS ARE EXACT. CONFIRMATION OF EXISTENCE AND EXACT LOCATION OF ALL SERVICES MUST BE OBTAINED FROM THE INDIVIDUAL UTILITIES BEFORE PROCEEDING WITH CONSTRUCTION.

BM 37-050	Colony St., S. of Mostyn Pl., Tbl. in N. Conc. foundation of pumping station, 1 m W. & 0.1 m below brick of N.E. Cor. of Bldg
ELEV 231.381m	
NO.	ISSUED FOR CONSTRUCTION 08/07/08 KMB
REVISIONS	Y/M/D/D BY

DESIGNED BY	ALD / MJR	CHECKED BY	[Signature]
DRAWN BY	KMB	APPROVED BY	[Signature]
HOR. SCALE	1:250	RELEASED FOR CONSTRUCTION	[Signature]
VERT. SCALE	1:50	DATE	08/07/08

PROFESSIONAL'S SEAL
 PROVINCE OF MANITOBA
 28 July 2008
 C. G. MACEY
 REGISTERED ENGINEER
 CONSULTANT DRAWING NO. 02
 D265-228-01

THE CITY OF WINNIPEG
 WATER AND WASTE DEPARTMENT
 2008 COMBINED SEWER RENEWALS
 BY CIPP LINING
 CONTRACT 15
 BALMORAL STREET
 40m N OF MOSTYN PLACE
 TO 88m S OF BROADWAY

SHEET 2 OF 19
 CITY DRAWING NUMBER
8581
 REV 0