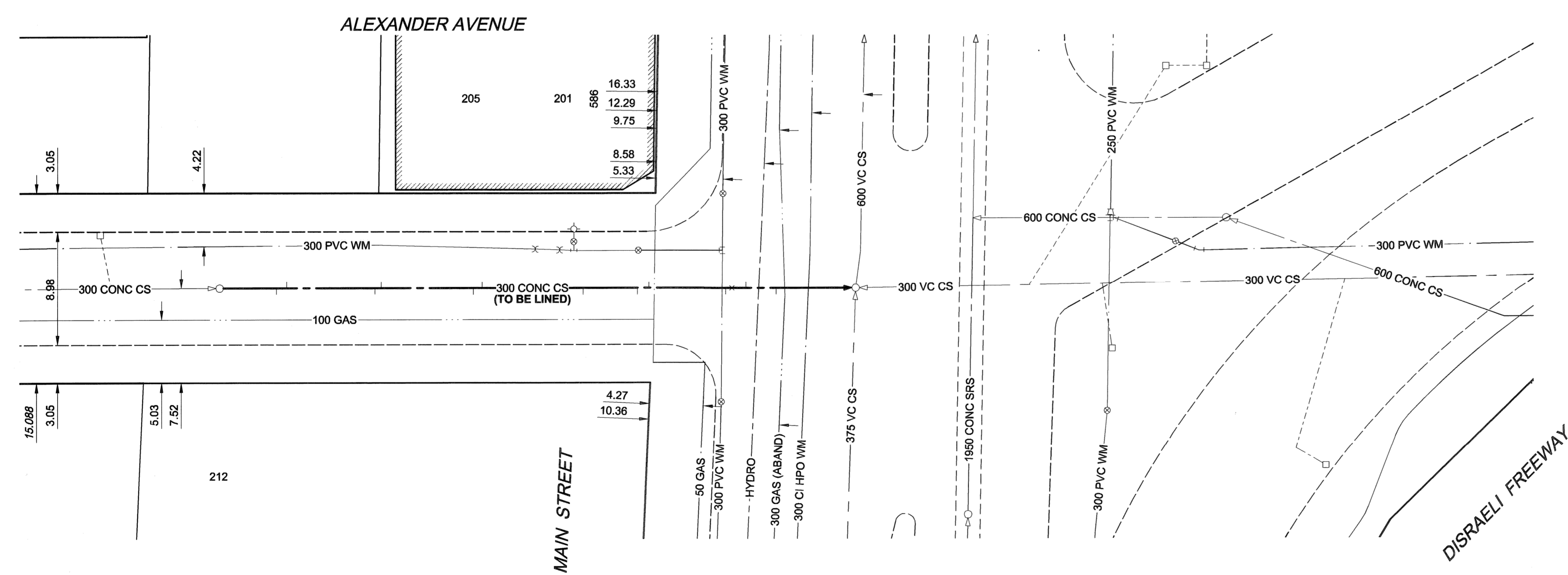
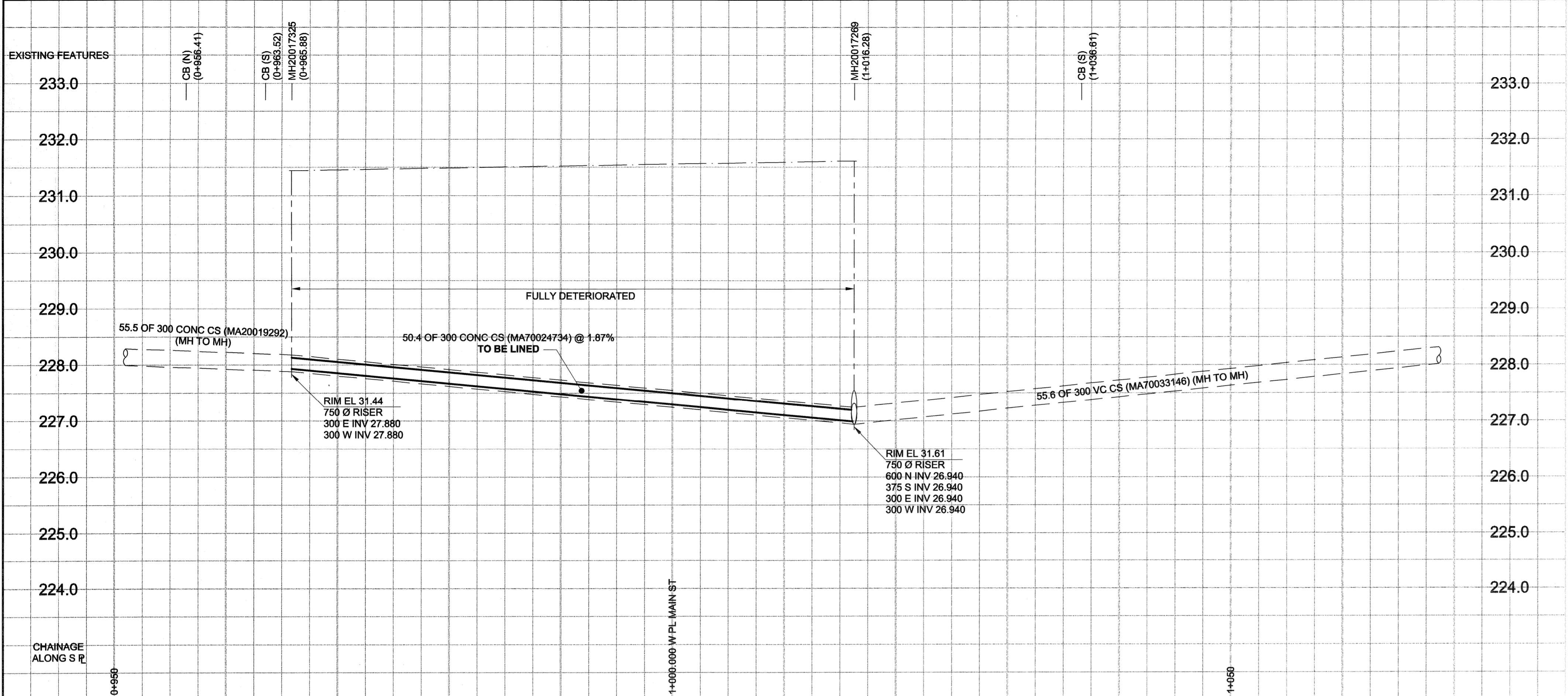


D SIZE 22" x 34" (559mm x 864mm)

PLOT: 08/07/08 10:43:21 AM

UMA REVIEW DRFT CHK



**SEWER JUNCTION INFORMATION**

REF. MH*	DIST FROM*	SIZE*	CLOCK AT*
MH20017325	4.50	1500	02
MH20017325	5.30	1500	10
MH20017325	12.30	1500	02
MH20017325	12.80	1500	10
MH20017325	20.10	1500	02
MH20017325	20.80	1500	10
MH20017325	28.80	1500	02
MH20017325	33.10	1500	02
MH20017325	34.00	1500	09
MH20017325	40.10	1500	02
MH20017325	40.80	1500	12
MH20017325	41.70	1500	11
MH20017325	44.10	1500	02

\*JUNCTION INFORMATION FROM VIDEO INSPECTION

**WARNING**  
 IF POWER EQUIPMENT OR EXPLOSIVES ARE TO BE USED FOR EXCAVATION ON THIS PROJECT, THE CONTRACTOR MUST:  
 1) NOTIFY THE GAS COMPANY OF THE PROPOSED LOCATION OF EXCAVATION.  
 2) TAKE PRECAUTION TO AVOID DAMAGE TO GAS COMPANY INSTALLATIONS.  
 SEE PROVINCIAL REGULATION 140/82 FOR DETAILS

**METRIC**  
 WHOLE NUMBERS INDICATE MILLIMETRES  
 DECIMALIZED NUMBERS INDICATE METRES

EXISTING	LEGEND - PLAN	NEW	EXISTING	LEGEND - PLAN	NEW	EXISTING	LEGEND - PROFILE	NEW
150 WM	WATERMAIN	150 WM	150 WM	WATERMAIN	150 WM	150 WM	WATERMAIN	150 WM
300 LDS	LAND DRAINAGE SEWER	300 LDS	300 LDS	LAND DRAINAGE SEWER	300 LDS	300 LDS	LAND DRAINAGE SEWER	300 LDS
250 WWS	WASTE WATER SEWER	250 WWS	250 WWS	WASTE WATER SEWER	250 WWS	250 WWS	WASTE WATER SEWER	250 WWS
○	MANHOLE	●	○	MANHOLE	●	○	MANHOLE	●
□	CATCH BASIN	■	□	CATCH BASIN	■	□	CATCH BASIN	■
△	CURB INLET	▲	△	CURB INLET	▲	△	CURB INLET	▲
▭	CULVERT	▭	▭	CULVERT	▭	▭	CULVERT	▭
—	PIPE ABANDONMENTS	—	—	PIPE ABANDONMENTS	—	—	PIPE ABANDONMENTS	—
+	SURVEY BAR	+	+	SURVEY BAR	+	+	SURVEY BAR	+
—	CURB STOP	—	—	CURB STOP	—	—	CURB STOP	—
—	REDUCER	—	—	REDUCER	—	—	REDUCER	—
—	COUPLING	—	—	COUPLING	—	—	COUPLING	—
—	ANODE	—	—	ANODE	—	—	ANODE	—
—	HYDRO	—	—	HYDRO	—	—	HYDRO	—
—	MTS	—	—	MTS	—	—	MTS	—
—	GAS	—	—	GAS	—	—	GAS	—
—	TESTHOLE	—	—	TESTHOLE	—	—	TESTHOLE	—
—	LAMP STANDARD	—	—	LAMP STANDARD	—	—	LAMP STANDARD	—
—	TREE	—	—	TREE	—	—	TREE	—

**LOCATION APPROVED**  
 UNDERGROUND STRUCTURES

SUPR. U/G STRUCTURES DATE COMMITTEE

**NOTE:**  
 LOCATION OF UNDERGROUND STRUCTURES AS SHOWN ARE BASED ON THE BEST INFORMATION AVAILABLE. BUT NO GUARANTEE IS GIVEN THAT ALL EXISTING UTILITIES ARE SHOWN OR THAT THE GIVEN LOCATIONS ARE EXACT. CONFIRMATION OF EXISTENCE AND EXACT LOCATION OF ALL SERVICES MUST BE OBTAINED FROM THE INDIVIDUAL UTILITIES BEFORE PROCEEDING WITH CONSTRUCTION.

DESIGNED BY	ALD / MJR	CHECKED BY	SM
DRAWN BY	KMB	APPROVED BY	[Signature]
HOR. SCALE	1:250	RELEASED FOR CONSTRUCTION	[Signature]
VERT. SCALE	1:50	DATE	08/07/08
NO. REVISIONS	0	DATE	08/07/08

**APEGM**  
 Certificate of Authorization  
 UMA Engineering Ltd. (MB)  
 No. 256 Date: 08/07/08

PROFESSIONAL'S SEAL  
 PROVINCE OF MANITOBA  
 08 July 2008  
 C.C. MACEY  
 REGISTERED ENGINEER  
 CONSULTANT DRAWING NO. 01  
 D265-228-01

**THE CITY OF WINNIPEG**  
 WATER AND WASTE DEPARTMENT

**2008 COMBINED SEWER RENEWALS**  
 BY CIPP LINING  
 CONTRACT 15  
 ALEXANDER AVENUE  
 30m E OF KING STREET  
 TO MAIN STREET

SHEET 1 OF 19  
 CITY DRAWING NUMBER  
**8580**  
 REV 0

BID OPPORTUNITY NO. 467-2008