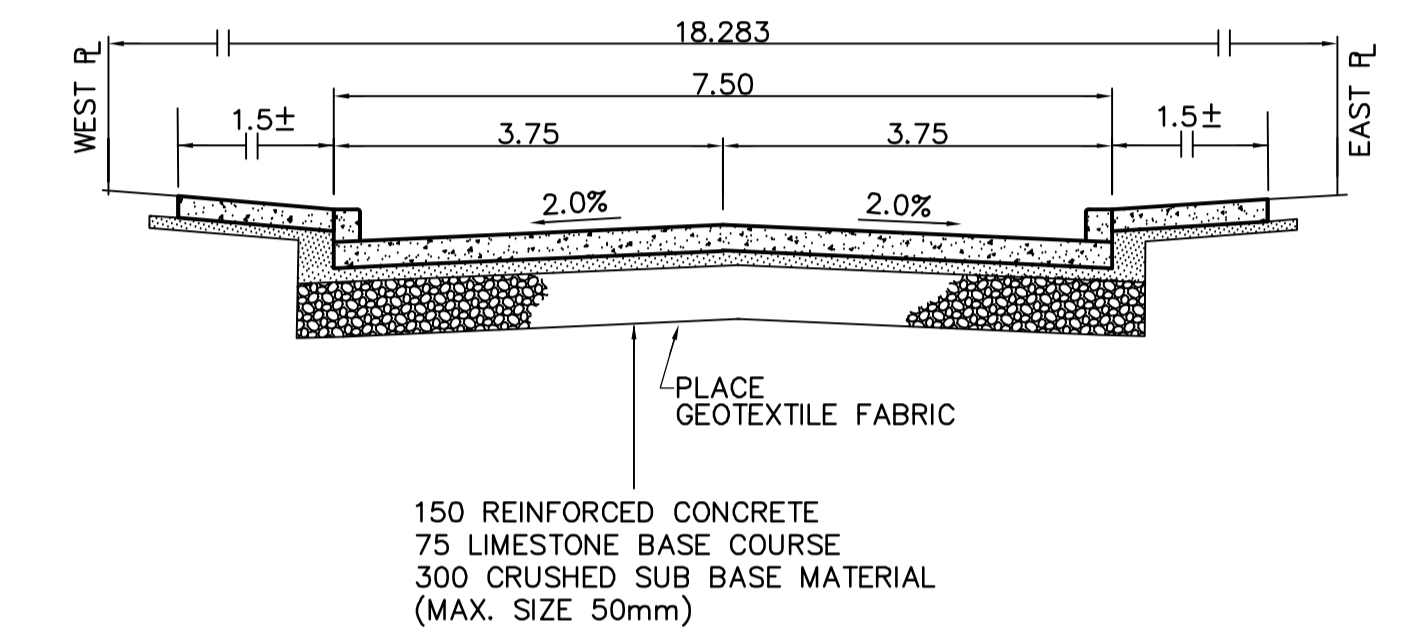
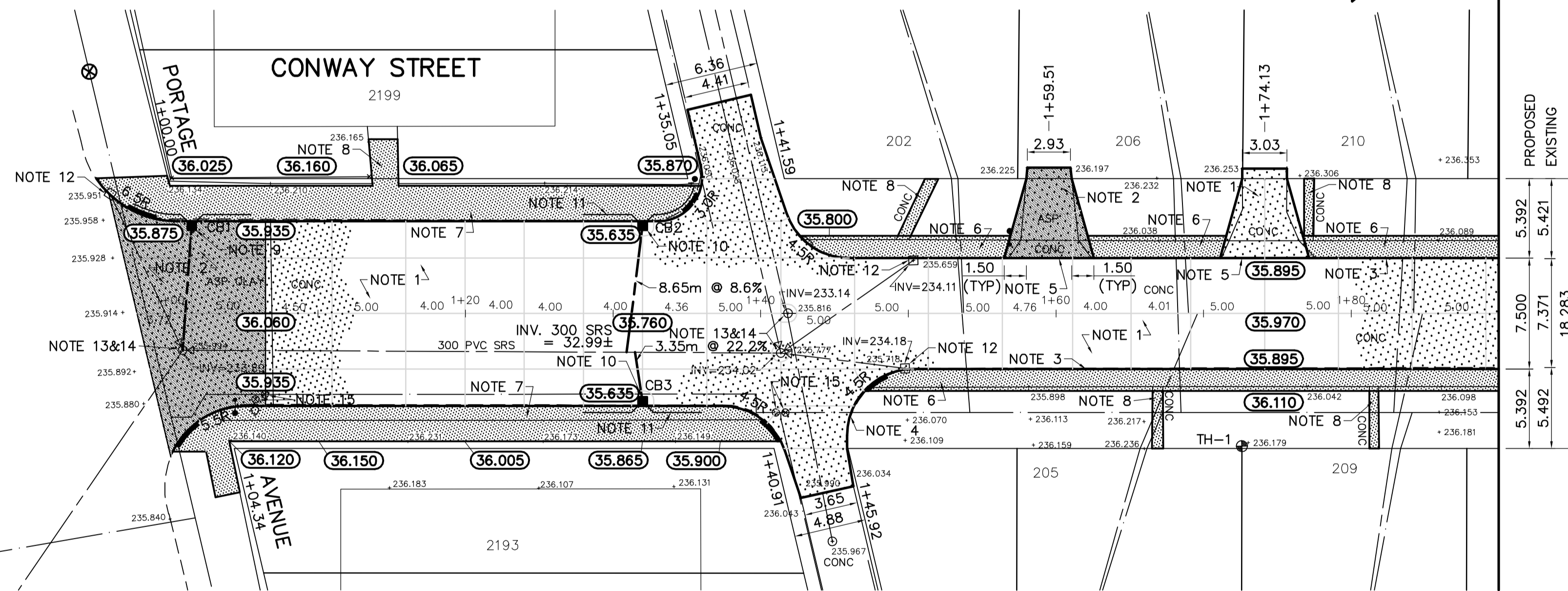


PAVEMENT RECONSTRUCTION SECTION WITH MONOLITHIC CURB AND SIDEWALK



PAVEMENT RECONSTRUCTION SECTION WITH BARRIER CURB AND SIDEWALK



| DESCRIPTION | RIM    | INVERT |       |        |        |
|-------------|--------|--------|-------|--------|--------|
|             |        | NORTH  | SOUTH | EAST   | WEST   |
| CB 1        | 35.875 |        |       | 34.275 |        |
| CB 2        | 35.635 |        |       | 34.035 |        |
| CB 3        | 35.635 |        |       |        | 34.035 |

REFERENCE NOTES

- PAVEMENT DIMENSIONS ARE TO BACK OF CURB
- ADD 200.000 TO DESIGN ELEVATIONS TO OBTAIN GEODETIC DATUM
- BASELINE IS CENTRE LINE RIGHT-OF-WAY
- PROPERTY LINES OBTAINED FROM CITY OF WINNIPEG L.B.I.S., AND NO SCALE FACTOR WAS APPLIED
- REFER TO DRAWING CU01 FOR LAND DRAINAGE WORKS
- REFER TO EARTH TECH FIELD BOOK NO. 4575

CONSTRUCTION NOTES

- REMOVE EXISTING PAVEMENT AND CONSTRUCT NEW 150mm REINFORCED CONCRETE PAVEMENT
- REMOVE EXISTING PAVEMENT AND CONSTRUCT NEW 150mm REINFORCED CONCRETE PAVEMENT c/w 50mm ASPHALT OVERLAY (TYPE 1A)
- CONSTRUCT NEW CONCRETE BARRIER CURB (180mm HT, SEPARATE)
- CONSTRUCT NEW MODIFIED CONCRETE BARRIER CURB (180mm HT, INTEGRAL)
- CONSTRUCT NEW MOUNTABLE CURB (50mm HT, INTEGRAL)
- CONSTRUCT NEW 100mm CONCRETE SIDEWALK
- CONSTRUCT NEW MONOLITHIC CURB AND SIDEWALK
- RENEW EXISTING CONCRETE PRIVATE SIDEWALK
- INSTALL NEW CURB AND GUTTER INLET c/w CATCH BASIN (SD-024) AND CONNECT NEW 250mm LEAD TO EXISTING MANHOLE
- INSTALL NEW CURB AND GUTTER INLET c/w CATCH BASIN (SD-024) AND CONNECT NEW 250mm LEAD TO EXISTING 300mm STORM RELIEF SEWER
- INSTALL 150mm SUBDRAIN
- REMOVE EXISTING CATCH BASIN
- ADJUST EXISTING MANHOLE/CATCH BASIN TO GRADE
- INSTALL NEW CAST IRON RISER RING
- ADJUST EXISTING WATER VALVE TO GRADE

METRIC  
WHOLE NUMBERS INDICATE MILLIMETRES  
DECIMALIZED NUMBERS INDICATE METRES

**APEGM**  
Certificate of Authorization  
Earth Tech Canada Inc.  
No. 730 Expiry: April 30, 2008

| EXISTING     | LEGEND - PLAN       | PROPOSED     | EXISTING          | LEGEND - PLAN     | PROPOSED          | EXISTING | LEGEND - PROFILE   | PROPOSED           |
|--------------|---------------------|--------------|-------------------|-------------------|-------------------|----------|--------------------|--------------------|
| 150 mm W.M.  | WATERMAIN           | 150 mm W.M.  | HYDRO             | HYDRO             | HYDRO             | ⊗        | PROFILE            | PROFILE            |
| ⊕            | HYDRANT             | ⊕            | M.T.S.            | M.T.S.            | M.T.S.            | ⊗        | WEST GUTTER        | WEST GUTTER        |
| ⊙            | VALVE               | ⊙            | CONCRETE          | CONCRETE          | CONCRETE          | ⊙        | EAST GUTTER        | EAST GUTTER        |
| 300mm L.D.S. | LAND DRAINAGE SEWER | 300mm L.D.S. | ASPHALT           | ASPHALT           | ASPHALT           | ⊙        | WEST PROPERTY LINE | WEST PROPERTY LINE |
| 250mm W.W.S. | WASTEWATER SEWER    | 250mm W.W.S. | PROPERTY LINE     | PROPERTY LINE     | PROPERTY LINE     | ⊙        | EAST PROPERTY LINE | EAST PROPERTY LINE |
| ○            | MANHOLE             | ○            | SURVEY BAR        | SURVEY BAR        | SURVEY BAR        | ⊙        |                    |                    |
| □            | CATCH BASIN         | □            | ELEVATION         | ELEVATION         | ELEVATION         | (32.750) |                    |                    |
| ▽            | CURB INLET          | ▽            | TREE              | TREE              | TREE              |          |                    |                    |
| +            | JUNCTIONS           | +            | SIDEWALK RAMP     | SIDEWALK RAMP     | SIDEWALK RAMP     |          |                    |                    |
| —            | CULVERT             | —            | CONCRETE SIDEWALK | CONCRETE SIDEWALK | CONCRETE SIDEWALK |          |                    |                    |
| —            | GAS                 | —            | FENCE             | FENCE             | FENCE             |          |                    |                    |

LOCATION APPROVED UNDERGROUND STRUCTURES

SUPV. U/G STRUCTURES DATE COMMITTEE

NOTE:

LOCATION OF UNDERGROUND STRUCTURES AS SHOWN ARE BASED ON THE BEST INFORMATION AVAILABLE, BUT NO GUARANTEE IS GIVEN THAT ALL EXISTING UTILITIES ARE SHOWN OR THAT THE GIVEN LOCATIONS ARE EXACT. CONFIRMATION OF EXISTENCE AND EXACT LOCATION OF ALL SERVICES MUST BE OBTAINED FROM THE INDIVIDUAL UTILITIES BEFORE PROCEEDING WITH CONSTRUCTION.

B.M. 39-007 1/4 in Conc. platform of pumphouse, S. of Portage Ave. @ Conway St., 0.4m S.W. of N.E. Cor. of platform.

| NO. | REVISIONS         | DATE     | BY |
|-----|-------------------|----------|----|
| 0   | ISSUED FOR TENDER | 06/06/08 | BC |
| A   | ISSUED FOR REVIEW | 04/14/08 | BC |

**EarthTech**  
A tyco International Ltd. Company

|             |       |                               |            |
|-------------|-------|-------------------------------|------------|
| DESIGNED BY | BC    | CHECKED BY                    | TGS        |
| DRAWN BY    | BC    | APPROVED BY                   |            |
| HOR. SCALE: | 1:250 | RELEASED FOR CONSTRUCTION BY: |            |
| VERTICAL:   | 1:10  | DATE                          | 03/07/2008 |

ENGINEER'S SEAL  
PROVINCE OF MANITOBA  
ORIGINAL SIGNED  
T.G. SMITH  
MAY 13/08  
REGISTERED PROFESSIONAL ENGINEER

CONSULTANT DRAWING NO. CT04

**THE CITY OF WINNIPEG**  
PUBLIC WORKS DEPARTMENT  
TRANSPORTATION ENGINEERING DIVISION

**CONWAY STREET**  
PORTAGE AVENUE TO LODGE AVENUE

PAVEMENT RECONSTRUCTION PLAN/PROFILE  
PORTAGE AVENUE TO STATION 1+90

CITY DRAWING NUMBER  
SHEET 1 OF 3