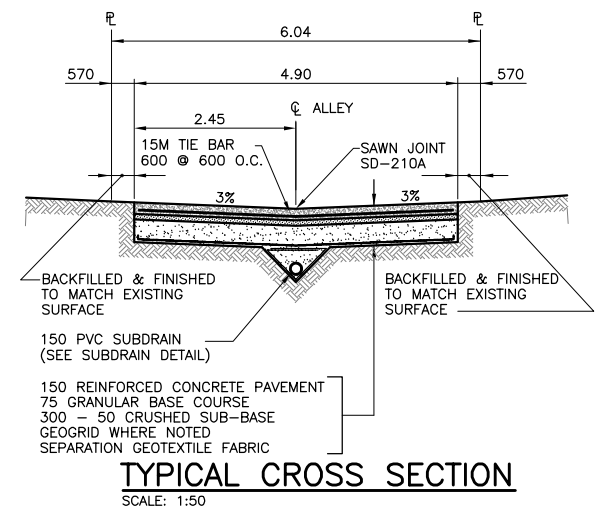
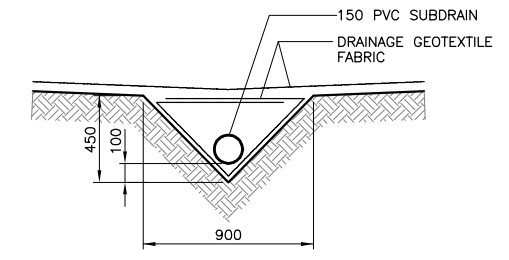


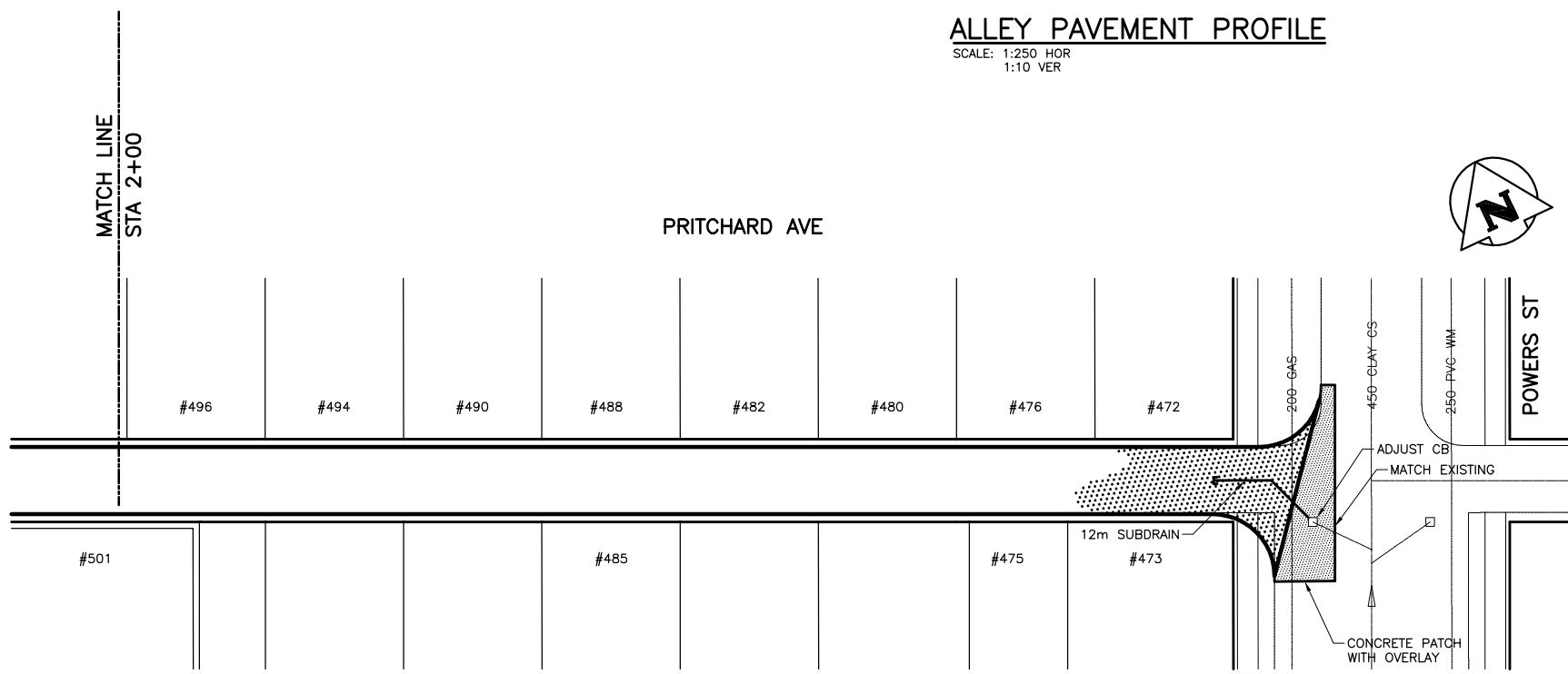
**ALLEY PAVEMENT PROFILE**  
SCALE: 1:250 HOR  
1:10 VER



**TYPICAL CROSS SECTION**  
SCALE: 1:50



**SUBDRAIN DETAIL**  
SCALE: 1:20



**ALLEY PAVEMENT PLAN**  
SCALE: 1:250 HOR

- NOTE:**
1. STATION CHAINAGE IS BASED ON CENTERLINE OF ALLEY RIGHT OF WAY.
  2. ADJUST MH AND CB RIMS TO NEW GRADES.
  3. PLUG SUBDRAINS AT TERMINAL ENDS.
  4. REGRADE EXISTING PRIVATE SIDEWALKS AS REQUIRED.
  5. INSTALLATION OF LIP CURBS AND THEIR EXTENTS TO BE DETERMINED BY THE CONTRACT ADMINISTRATOR.
  6. LIGHT STANDARDS, HYDRO POLES AND ANCHORS MAY REQUIRE TEMPORARY SUPPORT/REMOVAL OR REPLACEMENT AT THE CONTRACTOR'S EXPENSE.
  7. ISOLATE ALL POLES, BASES AND PILES WITHIN ALLEY RIGHT OF WAY (SD-228C)
  8. AVOID DAMAGE TO EXISTING TREES WITHIN THE LIMITS OF CONSTRUCTION.



**PROPERTY LIMITS DELINEATION**

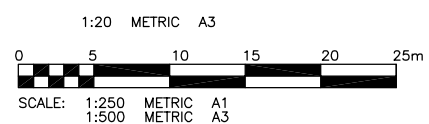
DELINEATION OF PROPERTY LIMITS AS SHOWN ON THIS DWG DOES NOT REPRESENT A "LEGAL SURVEY". KGS GROUP MAKES NO REPRESENTATION OR WARRANTY AS TO THE ACCURACY OF PROPERTY LIMITS DELINEATED ON THIS DWG, NOR ON THE DIMENSIONAL ACCURACY OF DWG FEATURES RELATIVE TO THOSE PROPERTY LIMITS.

**WARNING**

1. NOTIFY THE GAS COMPANY OF THE PROPOSED LOCATION OF EXCAVATION.
2. TAKE PRECAUTION TO AVOID DAMAGE TO GAS COMPANY INSTALLATIONS.
3. SEE PROVINCIAL REGULATION 210/72 FOR DETAILS.

**METRIC**

WHOLE NUMBERS INDICATE MILLIMETRES  
DECIMALIZED NUMBERS INDICATE METRES



EXISTING	LEGEND-PLAN	PROPOSED	EXISTING	LEGEND-PLAN	PROPOSED	EXISTING	LEGEND-PROFILE	PROPOSED
300 LBS	LAND DRAINAGE SEWER	300 LBS	+	TEST HOLE				
250 WWS	WASTE WATER SEWER	250 WWS	+	GUY WIRE				
---	GAS	---	+	LIGHT STANDARD				
---	HYDRO	---	+	BACK OF CURB				
---	M.T.S.	---	+	CONCRETE				
150 WM	WATERMAIN	150 WM	+	ASPHALT				
+	HYDRANT	+	+	SIDEWALK				
+	VALVE	+	+	PROPERTY LINE				
+	MANHOLE	+	+	SURVEY BAR				
+	CATCH BASIN	+	+	GEODETIC BENCHMARK				
+	CURB INLET	+	+	ELEVATION				
+	POLES	+	+					

**PRELIMINARY**  
NOT TO BE USED FOR CONSTRUCTION

**LOCATION APPROVED UNDERGROUND STRUCTURES**

SUPV. U/G STRUCTURES COMMITTEE DATE

**NOTE:**  
LOCATION OF UNDERGROUND STRUCTURES AS SHOWN ARE BASED ON THE BEST INFORMATION AVAILABLE BUT NO GUARANTEE IS GIVEN THAT ALL EXISTING UTILITIES ARE SHOWN OR THAT THE GIVEN LOCATIONS ARE EXACT. CONFIRMATION OF EXISTENCE AND EXACT LOCATION OF ALL SERVICES MUST BE OBTAINED FROM THE INDIVIDUAL UTILITIES BEFORE PROCEEDING WITH CONSTRUCTION.

B.M. 26-020 ELEV. 232.072m	N.W. COR. SELKIRK AVE. & POWERS ST., BRASS PILE IN 4.8m CONC. PILE, 2.4m E. OF W.L. POWERS ST. & 0.3m N. OF N.L. OF SELKIRK AVE.		
0	ISSUED FOR TENDERING	30/04/08	CR
A	ISSUED FOR REVIEW	18/04/08	CR
NO.	REVISIONS	DATE	BY

**KGS GROUP** CONSULTING ENGINEERS & PROJECT MANAGERS  
WINNIPEG (204) 896-1209  
THUNDER BAY (807) 345-2233

DESIGNED BY: CR  
CHECKED BY: RJH  
DRAWN BY: DW  
APPROVED BY:

HOR. SCALE: 1:250  
VERTICAL: 1:50

RELEASED FOR CONSTRUCTION: DATE

ENGINEER'S SEAL

CONSULTANT DRAWING NO.  
**07-0107-15**

**THE CITY OF WINNIPEG**  
PUBLIC WORKS DEPARTMENT  
TRANSPORTATION ENGINEERING DIVISION

PROJECT TITLE  
**2008 ALLEY RENEWAL PROGRAM  
NORTH AREA - CONTRACT 1  
SELKIRK AVE/PRITCHARD AVE ALLEY  
ANDREWS ST TO POWER ST  
STA. 2+00 TO STA. 3+00**

SHEET OF  
**02 OF 07**

COMPUTER FILE NAME  
**SELKIRK.DWG**

CITY DRAWING NUMBER  
**0002**

P:\PROJECTS\2007\07-0107-15\MUN\DWGS\NORTH CONTRACT\SELKIRK.DWG  
PLOT 1:1 (A1)