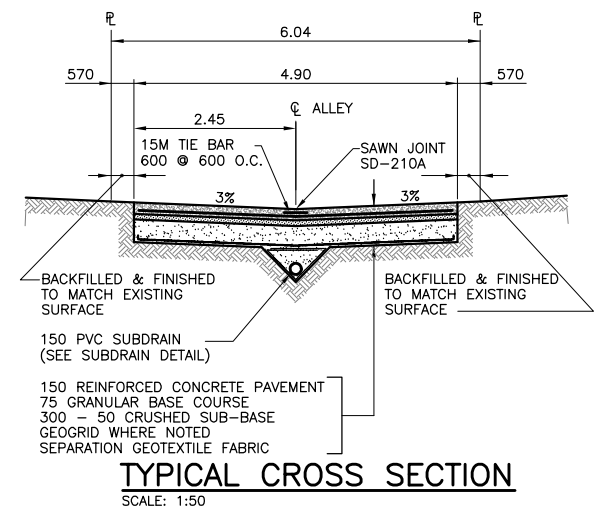
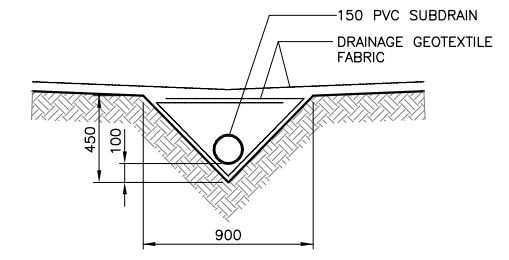


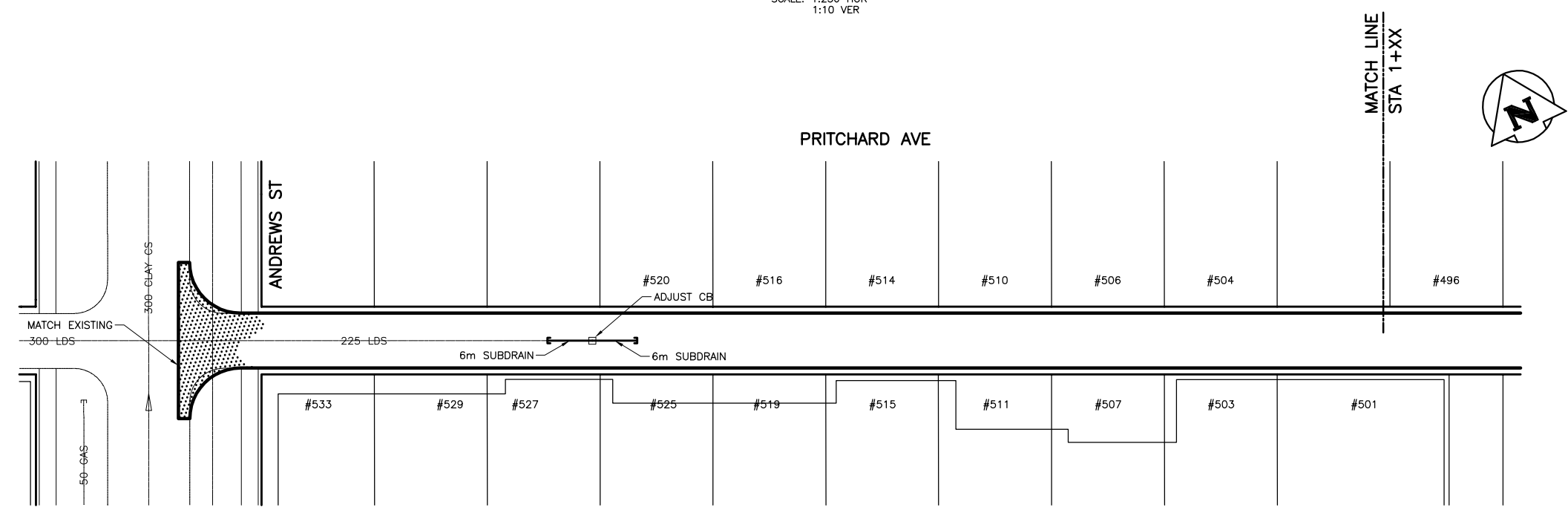
ALLEY PAVEMENT PROFILE
SCALE: 1:250 HOR
1:10 VER



TYPICAL CROSS SECTION
SCALE: 1:50



SUBDRAIN DETAIL
SCALE: 1:20



ALLEY PAVEMENT PLAN
SCALE: 1:250 HOR

PRELIMINARY
NOT TO BE USED FOR CONSTRUCTION

- NOTE:**
1. STATION CHAINAGE IS BASED ON CENTERLINE OF ALLEY RIGHT OF WAY.
 2. ADJUST MH AND CB RIMS TO NEW GRADES.
 3. PLUG SUBDRAINS AT TERMINAL ENDS.
 4. REGRADE EXISTING PRIVATE SIDEWALKS AS REQUIRED.
 5. INSTALLATION OF LIP CURBS AND THEIR EXTENTS TO BE DETERMINED BY THE CONTRACT ADMINISTRATOR.
 6. LIGHT STANDARDS, HYDRO POLES AND ANCHORS MAY REQUIRE TEMPORARY SUPPORT/REMOVAL OR REPLACEMENT AT THE CONTRACTOR'S EXPENSE.
 7. ISOLATE ALL POLES, BASES AND PILES WITHIN ALLEY RIGHT OF WAY (SD-228C)
 8. AVOID DAMAGE TO EXISTING TREES WITHIN THE LIMITS OF CONSTRUCTION.

EXISTING	LEGEND-PLAN	PROPOSED	EXISTING	LEGEND-PLAN	PROPOSED	EXISTING	LEGEND-PROFILE	PROPOSED
300 LDS	LAND DRAINAGE SEWER	300 LDS	250 WWS	WASTE WATER SEWER	250 WWS	+	TEST HOLE	
---	GAS	---	---	GAS	---	—	GUY WIRE	
---	HYDRO	---	---	HYDRO	---	—	LIGHT STANDARD	
---	M.T.S.	---	---	M.T.S.	---	—	BACK OF CURB	
150 WM	WATERMAIN	150 WM	---	CONCRETE	---	---	CONCRETE	
+	HYDRANT	+	---	ASPHALT	---	---	ASPHALT	
⊗	VALVE	⊗	---	SIDEWALK	---	---	SIDEWALK	
○	MANHOLE	○	---	PROPERTY LINE	---	---	PROPERTY LINE	
□	CATCH BASIN	□	---	SURVEY BAR	---	---	SURVEY BAR	
▽	CURB INLET	▽	---	GEODETTIC BENCHMARK	---	---	GEODETTIC BENCHMARK	
•	POLES	•	---	ELEVATION	---	---	ELEVATION	
			231.334			(32.231)		

LOCATION APPROVED UNDERGROUND STRUCTURES

SUPV. U/G STRUCTURES COMMITTEE DATE

NOTE:
LOCATION OF UNDERGROUND STRUCTURES AS SHOWN ARE BASED ON THE BEST INFORMATION AVAILABLE BUT NO GUARANTEE IS GIVEN THAT ALL EXISTING UTILITIES ARE SHOWN OR THAT THE GIVEN LOCATIONS ARE EXACT. CONFIRMATION OF EXISTENCE AND EXACT LOCATION OF ALL SERVICES MUST BE OBTAINED FROM THE INDIVIDUAL UTILITIES BEFORE PROCEEDING WITH CONSTRUCTION.

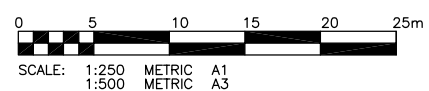
B.M. 26-020 ELEV. 232.072m	N.W. COR. SELKIRK AVE. & POWERS ST. - BRASS PLUG IN 4.8m CONC. PILE, 2.4m E. OF W.L. POWERS ST. & 0.3m N. OF N.L. OF SELKIRK AVE.
DESIGNED BY: CR	CHECKED BY: RJH
DRAWN BY: DW	APPROVED BY:
HOR. SCALE: 1:250	RELEASED FOR CONSTRUCTION:
VERTICAL: 1:50	DATE:
NO. REVISIONS	DATE BY

KGS GROUP CONSULTING ENGINEERS & PROJECT MANAGERS
WINNIPEG (204) 896-1209
THUNDER BAY (807) 345-2233

ENGINEER'S SEAL

DESIGNED BY: CR
DRAWN BY: DW
HOR. SCALE: 1:250
VERTICAL: 1:50

DATE: DD/MM/YY



PROPERTY LIMITS DELINEATION

DELINEATION OF PROPERTY LIMITS AS SHOWN ON THIS DWG DOES NOT REPRESENT A "LEGAL SURVEY". KGS GROUP MAKES NO REPRESENTATION OR WARRANTY AS TO THE ACCURACY OF PROPERTY LIMITS DELINEATED ON THIS DWG, NOR ON THE DIMENSIONAL ACCURACY OF DWG FEATURES RELATIVE TO THOSE PROPERTY LIMITS.

WARNING

1. NOTIFY THE GAS COMPANY OF THE PROPOSED LOCATION OF EXCAVATION.
2. TAKE PRECAUTION TO AVOID DAMAGE TO GAS COMPANY INSTALLATIONS.
3. SEE PROVINCIAL REGULATION 210/72 FOR DETAILS.

METRIC

WHOLE NUMBERS INDICATE MILLIMETRES
DECIMALIZED NUMBERS INDICATE METRES

APCGM
Certificate of Authorization
KGS Group
No. 245 Date:

THE CITY OF WINNIPEG PUBLIC WORKS DEPARTMENT TRANSPORTATION ENGINEERING DIVISION

PROJECT TITLE: **2008 ALLEY RENEWAL PROGRAM NORTH AREA - CONTRACT 1**
SELKIRK AVE/PRITCHARD AVE ALLEY
ANDREWS ST TO POWER ST
STA. 1+00 TO STA. 2+00

SHEET OF: **01** OF **07**

COMPUTER FILE NAME: **SELKIRK.DWG**

CITY DRAWING NUMBER: **0001**

CONSULTANT DRAWING NO.: **07-0107-15**

P:\PROJECTS\2007\07-0107-15\MUN\DWGS\NORTH CONTRACT\SELKIRK.DWG
PLOT 1:1 (A1)