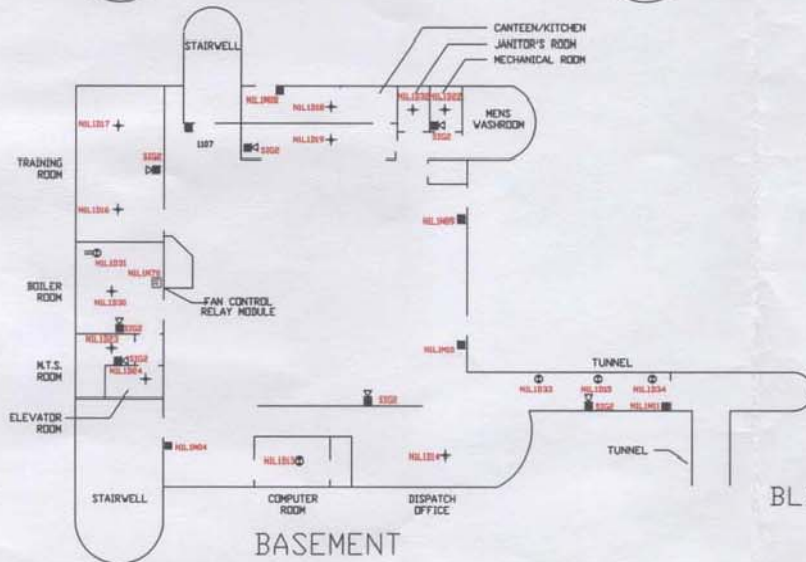


Notifier NFS-640 Fire Alarm Control Panel, Master Panel located in Building A

**LEGEND**

- PULL STATION C/W ADDRESSABLE MONITOR MODULE FMM-101A
- ADDRESSABLE MONITOR MODULE FMM-1A
- ⊙ ADDRESSABLE SMOKE DETECTOR FSP-851A
- + ADDRESSABLE HEAT DETECTOR FST-851A
- ADDRESSABLE RELAY MODULE FRM-1A
- ☐ FIRE ALARM HORN
- END OF LINE RESISTOR
- ADDRESSABLE DUCT SMOKE DETECTOR
- HIL1017 ADDRESSABLE DEVICE ADDRESS
- ▶ SPRINKLER WATERFLOW SWITCH
- D SPRINKLER ISOLATION VALVE



BLDG A ADMIN BLDG - FIRE ALARM LAYOUT



		PROJECT <b>THE CITY OF WINNIPEG          TRANSIT GARAGE          BLDG A ADMIN BLDG</b>
TITLE <b>FIRE ALARM DETAIL</b>		DRAWN BY DATE CHECKED BY SCALE
REV. NO. DATE DESCRIPTION	DATE SCALE REVISIONS	PROJECT NO. <b>VIPOND</b> SYSTEMS GROUP <small>277 GERRARD ST. EAST, SUITE 200, TORONTO, ONT. M5E 1B3</small>