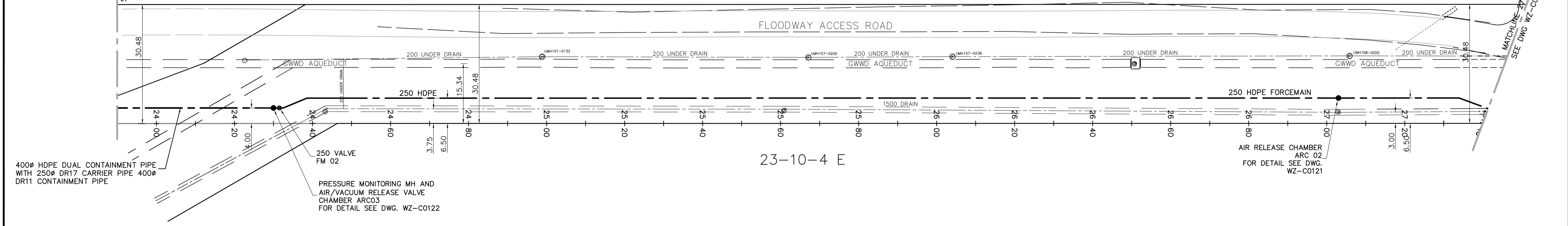
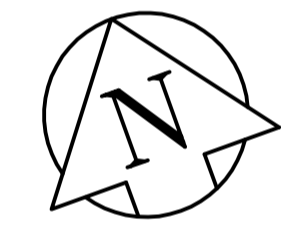


23-10-4 E



23-10-4 E

- GENERAL NOTES:**
1. BASE LINE IS SOUTH LIMIT OF RIGHT OF WAY.
 2. EXPOSE ALL COMMUNICATION AND POWER DUCTS/LINES BY HYDROVAC EXCAVATION.
 3. CONFIRM PROPOSED FLOODWAY AND AQUEDUCT ELEVATIONS PRIOR TO COMMENCEMENT OF WORKS.
 4. BACKFILL IN OPEN CUT TRENCHES SHALL BE CLASS 4 BACKFILL WITH CLASS B BEDDING. BACKFILL UNDER OR WITHIN 1.0m OF ROADWAY SHALL BE CLASS 2 BACKFILL WITH CLASS B BEDDING EXCEPT AS NOTED.

BENCHMARK NOTES:

DRAWING COORDINATES ARE UTM NAD83 - SCALE FACTOR 0.99983

B.M. No.	NORTHING	EASTING	ELEVATION
PILE 136	5523873.734	647764.406	236.242
PILE 133	5523256.606	647782.387	236.056

NOTE:

A. LOCATION OF UNDERGROUND STRUCTURES AS SHOWN ARE BASED ON THE BEST INFORMATION AVAILABLE. BUT NO GUARANTEE IS GIVEN THAT ALL EXISTING UTILITIES ARE SHOWN OR THAT THE GIVEN LOCATIONS ARE EXACT. CONFIRMATION OF EXISTENCE AND EXACT LOCATION OF ALL SERVICES MUST BE OBTAINED FROM THE INDIVIDUAL UTILITIES BEFORE PROCEEDING WITH CONSTRUCTION.

EXISTING	LEGEND - PLAN	PROPOSED	EXISTING	LEGEND - PLAN	PROPOSED	EXISTING	LEGEND - PLAN	PROPOSED
150 mm W.M.	WATERMAIN	150 mm W.M.	HYDRO M.T.S.	Light Standard	Light Standard	300mm L.D.S.	LAND DRAINAGE SEWER	300mm L.D.S.
300mm L.D.S.	VALVE	250mm W.W.S.	CONCRETE ASPHALT	POLE	POLE	250mm W.W.S.	WASTEWATER SEWER	250mm W.W.S.
250mm W.W.S.	MANHOLE		PROPERTY LINE	RAIL X-ING SIGNAL	RAIL X-ING SIGNAL		CATCH BASIN	
	CATCH BASIN		SURVEY BAR	RAILWAY TRACK	RAILWAY TRACK		CURB INLET	
	JUNCTIONS		ELEVATION	DITCH	DITCH		JUNCTIONS	
	CULVERT		ANODE				CULVERT	
	GAS		CONCRETE SIDEWALK FENCE				GAS	

LOCATION APPROVED UNDERGROUND STRUCTURES

SUPV. U/G STRUCTURES DATE COMMITTEE

NOTE: LOCATION OF UNDERGROUND STRUCTURES AS SHOWN ARE BASED ON THE BEST INFORMATION AVAILABLE. BUT NO GUARANTEE IS GIVEN THAT ALL EXISTING UTILITIES ARE SHOWN OR THAT THE GIVEN LOCATIONS ARE EXACT. CONFIRMATION OF EXISTENCE AND EXACT LOCATION OF ALL SERVICES MUST BE OBTAINED FROM THE INDIVIDUAL UTILITIES BEFORE PROCEEDING WITH CONSTRUCTION.

NO.	REVISIONS	DATE	BY
00	ISSUED FOR TENDER	07/07/30	DA

UMA	AECOM	EarthTech	CH2MHILL
DESIGNED BY: KWF	CHECKED BY: GK	DESIGNED BY: MAF	APPROVED BY: AHL
SCALE: HORZ. 1:500 VERT. 1:50	RELEASED FOR CONSTRUCTION BY: R. SOROKOWSKI		
DATE 2005/12/09	DATE 2007/7/30		

ENGINEER'S SEAL

PROVINCE OF MANITOBA ORIGINAL SIGNED BY K.W. FITCHETT 30/07/2007 REGISTERED PROFESSIONAL ENGINEER

CONSULTANT DRAWING NO. WZ-C0117

THE CITY OF WINNIPEG

WATER AND WASTE DEPARTMENT

ENGINEERING DIVISION

WATER TREATMENT PLANT SUPPLY AND INSTALLATION OF FORCEMAIN

CIVIL

GWWD AQUEDUCT R.O.W. STA. 23+90 TO STA. 27+40

CITY FILE NUMBER	
SHEET 18 OF 23	
CITY DRAWING NUMBER	1-0602Z-C-C0117-001-00D