

- GENERAL NOTES:**
1. BASE LINE IS CENTERLINE OF RIGHT OF WAY.
 2. EXPOSE ALL COMMUNICATION AND POWER DUCTS/LINES BY HYDROVAC EXCAVATION.
 3. EXPOSE AQUEDUCT AND CONFIRM ELEVATION BY VACUUM EXCAVATION PRIOR TO FORCEMAIN CONSTRUCTION. EXCAVATION SHALL BE MIN. 5m FROM EITHER SIDE OF AQUEDUCT AND SHORED TO PREVENT MOVEMENT OF GROUND UNDER AND AROUND AQUEDUCT.
 4. INSTALL ALL PIPING UTILIZING TRENCHLESS INSTALLATION METHODS UNLESS OTHERWISE APPROVED OR DIRECTED BY THE CONTRACT ADMINISTRATOR.

BENCHMARK NOTES:

DRAWING COORDINATES ARE UTM NAD83 - SCALE FACTOR 0.99983

B.M. No.	NORTHING	EASTING	ELEVATION
PILE 136	5523873.734	647764.406	236.242
PILE 133	5523256.606	647782.387	236.056

NOTE:

A. LOCATION OF UNDERGROUND STRUCTURES AS SHOWN ARE BASED ON THE BEST INFORMATION AVAILABLE. BUT NO GUARANTEE IS GIVEN THAT ALL EXISTING UTILITIES ARE SHOWN OR THAT THE GIVEN LOCATIONS ARE EXACT. CONFIRMATION OF EXISTENCE AND EXACT LOCATION OF ALL SERVICES MUST BE OBTAINED FROM THE INDIVIDUAL UTILITIES BEFORE PROCEEDING WITH CONSTRUCTION.



150 mm W.M.	WATERMAIN	150 mm W.M.	HYDRO	HYDRO	150 mm W.M.	WATERMAIN	150 mm W.M.	HYDRO	HYDRO	150 mm W.M.	WATERMAIN	150 mm W.M.	HYDRO	HYDRO	150 mm W.M.	WATERMAIN	150 mm W.M.	HYDRO	HYDRO
◇	HYDRANT	+	M.T.S.	M.T.S.	+	HYDRANT	+	M.T.S.	M.T.S.	+	HYDRANT	+	M.T.S.	M.T.S.	+	HYDRANT	+	M.T.S.	M.T.S.
○	VALVE	○	CONCRETE	CONCRETE	○	VALVE	○	CONCRETE	CONCRETE	○	VALVE	○	CONCRETE	CONCRETE	○	VALVE	○	CONCRETE	CONCRETE
⊕	LAND DRAINAGE SEWER	⊕	ASPHALT	ASPHALT	⊕	LAND DRAINAGE SEWER	⊕	ASPHALT	ASPHALT	⊕	LAND DRAINAGE SEWER	⊕	ASPHALT	ASPHALT	⊕	LAND DRAINAGE SEWER	⊕	ASPHALT	ASPHALT
⊖	WASTEWATER SEWER	⊖	PROPERTY LINE	PROPERTY LINE	⊖	WASTEWATER SEWER	⊖	PROPERTY LINE	PROPERTY LINE	⊖	WASTEWATER SEWER	⊖	PROPERTY LINE	PROPERTY LINE	⊖	WASTEWATER SEWER	⊖	PROPERTY LINE	PROPERTY LINE
○	MANHOLE	○	SURVEY BAR	SURVEY BAR	○	MANHOLE	○	SURVEY BAR	SURVEY BAR	○	MANHOLE	○	SURVEY BAR	SURVEY BAR	○	MANHOLE	○	SURVEY BAR	SURVEY BAR
□	CATCH BASIN	□	ELEVATION	ELEVATION	□	CATCH BASIN	□	ELEVATION	ELEVATION	□	CATCH BASIN	□	ELEVATION	ELEVATION	□	CATCH BASIN	□	ELEVATION	ELEVATION
▽	CURB INLET	▽	TREE	TREE	▽	CURB INLET	▽	TREE	TREE	▽	CURB INLET	▽	TREE	TREE	▽	CURB INLET	▽	TREE	TREE
+	JUNCTIONS	+	ANODE	ANODE	+	JUNCTIONS	+	ANODE	ANODE	+	JUNCTIONS	+	ANODE	ANODE	+	JUNCTIONS	+	ANODE	ANODE
—	CULVERT	—	CONCRETE SIDEWALK	CONCRETE SIDEWALK	—	CULVERT	—	CONCRETE SIDEWALK	CONCRETE SIDEWALK	—	CULVERT	—	CONCRETE SIDEWALK	CONCRETE SIDEWALK	—	CULVERT	—	CONCRETE SIDEWALK	CONCRETE SIDEWALK
—	GAS	—	FENCE	FENCE	—	GAS	—	FENCE	FENCE	—	GAS	—	FENCE	FENCE	—	GAS	—	FENCE	FENCE
—	EXISTING	—	LEGEND - PLAN	LEGEND - PLAN	—	EXISTING	—	LEGEND - PLAN	LEGEND - PLAN	—	EXISTING	—	LEGEND - PLAN	LEGEND - PLAN	—	EXISTING	—	LEGEND - PLAN	LEGEND - PLAN
—	LEGEND - PLAN	—	PROPOSED	PROPOSED	—	LEGEND - PLAN	—	PROPOSED	PROPOSED	—	LEGEND - PLAN	—	PROPOSED	PROPOSED	—	LEGEND - PLAN	—	PROPOSED	PROPOSED

LOCATION APPROVED UNDERGROUND STRUCTURES

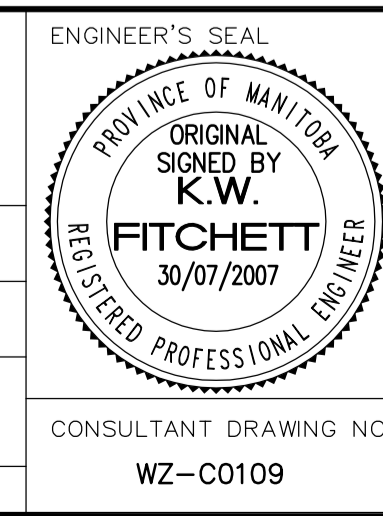
SUPV. U/G STRUCTURES DATE COMMITTEE

NOTE:

LOCATION OF UNDERGROUND STRUCTURES AS SHOWN ARE BASED ON THE BEST INFORMATION AVAILABLE. BUT NO GUARANTEE IS GIVEN THAT ALL EXISTING UTILITIES ARE SHOWN OR THAT THE GIVEN LOCATIONS ARE EXACT. CONFIRMATION OF EXISTENCE AND EXACT LOCATION OF ALL SERVICES MUST BE OBTAINED FROM THE INDIVIDUAL UTILITIES BEFORE PROCEEDING WITH CONSTRUCTION.

B.M. ELEV.	NO.	REVISIONS	DATE	BY
	00	ISSUED FOR TENDER	07/07/30	DA

CH2MHILL Frederickson Cooper ARCHITECTS	DESIGNED BY: KWF	CHECKED BY: GK
EarthTech A Tyco International Ltd. Company	DRAWN BY: MAF	APPROVED BY: AHL
	SCALE: HORZ. 1:500 VERT. 1:50	RELEASED FOR CONSTRUCTION BY: R. SOROKOWSKI
	DATE: 2005/12/09	DATE: 2007/7/30



THE CITY OF WINNIPEG
WATER AND WASTE DEPARTMENT
ENGINEERING DIVISION

WATER TREATMENT PLANT
SUPPLY AND INSTALLATION
OF FORCEMAIN

CIVIL
MURDOCK ROAD
STA. 27+70 TO G.W.W. AQUEDUCT

CITY FILE NUMBER
SHEET 10 OF 22
CITY DRAWING NUMBER
1-0601Z-C-C0109-001-00D

CONSULTANT DRAWING NO.
WZ-C0109